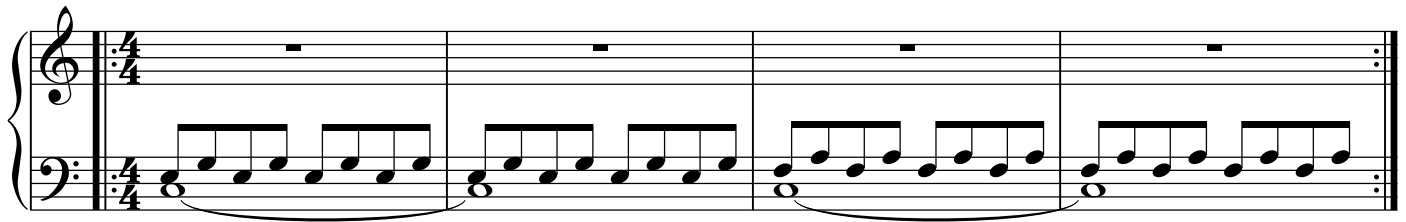


Solo Piano Suite 2

No. 2

Kevin Pearson

$\text{♩} = 110$



25

Measures 25-28 of a musical score. The piece is in 3/4 time. Measures 25 and 26 feature a half-note chord in the right hand and a continuous eighth-note arpeggiated pattern in the left hand. Measures 27 and 28 repeat this pattern. A repeat sign is placed at the beginning of measure 27.

29

Measures 29-32 of a musical score. Measures 29 and 30 continue the pattern from the previous system. Measures 31 and 32 introduce a half-note chord in the right hand while the left hand continues its arpeggiated pattern. A repeat sign is placed at the beginning of measure 31.

33

Measures 33-36 of a musical score. Measures 33 and 34 continue the pattern. Measures 35 and 36 feature a half-note chord in the right hand and a continuous eighth-note arpeggiated pattern in the left hand. A repeat sign is placed at the beginning of measure 35.

37

Measures 37-40 of a musical score. Measures 37 and 38 feature a half-note chord in the right hand and a continuous eighth-note arpeggiated pattern in the left hand. Measures 39 and 40 continue this pattern. A repeat sign is placed at the beginning of measure 37.

41

Measures 41-44 of a musical score. Measures 41 and 42 feature a half-note chord in the right hand and a continuous eighth-note arpeggiated pattern in the left hand. Measures 43 and 44 continue this pattern. A repeat sign is placed at the beginning of measure 41.

45

Measures 45-46 of a musical score. Both measures feature a continuous eighth-note arpeggiated pattern in both the right and left hands. Measure 45 includes triplet markings (groups of three notes with a '3' below) in both hands. A repeat sign is placed at the beginning of measure 45.

47

Measures 47-48 of a musical score. Both measures feature a continuous eighth-note arpeggiated pattern in both the right and left hands. Measure 47 includes triplet markings (groups of three notes with a '3' below) in both hands. A repeat sign is placed at the beginning of measure 47.

49

3

51

52

55

D.S. al Coda Coda
with repeats

59

rit.