

Violino 2

Lætatus Sum RV 827

a 4 voci

Antonio Vivaldi (1678 - 1741)

Allegro

1

7

14

20 **A**

26

32

37

43

49

55

Violino 2

62 **B**

68

73

77

82 **C** Andante

91 **D** Tempo primo

98

104

110 **E** Andante

118

125 **F** Allegro

[p]

[f]

p

f

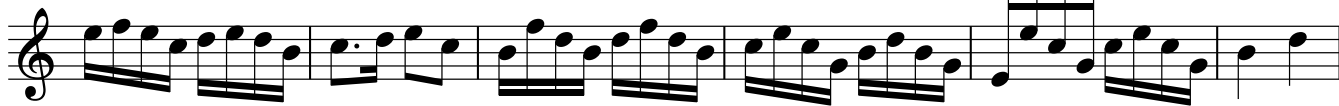
The musical score for Violino 2 consists of nine staves of music. The first staff (measures 62-67) is marked with a box 'B' and contains eighth and sixteenth notes. The second staff (measures 68-72) continues the eighth and sixteenth note patterns. The third staff (measures 73-76) also features eighth and sixteenth notes. The fourth staff (measures 77-81) includes a half note and a quarter note. The fifth staff (measures 82-90) is marked 'C Andante' and contains half and quarter notes, with a dynamic marking of *[p]*. The sixth staff (measures 91-97) is marked 'D Tempo primo' and contains half and quarter notes, with a dynamic marking of *[f]*. The seventh staff (measures 98-103) contains eighth and sixteenth notes. The eighth staff (measures 104-109) continues the eighth and sixteenth note patterns. The ninth staff (measures 110-117) is marked 'E Andante' and contains half and quarter notes, with a dynamic marking of *p*. The tenth staff (measures 118-124) contains eighth and sixteenth notes. The eleventh staff (measures 125-129) is marked 'F Allegro' and contains eighth and sixteenth notes, with a dynamic marking of *f*. The score ends with a double bar line and a fermata on the final note.

Violino 2

130



135



141



148



153



161



168



174



180



187

