

G. ROSSINI
GUGLIELMO TELL
SINFONIA

TRIANGOLO

Andante Allegro

A B 44

C D E F Andante

24 15 16 29 20

(G. Casa) (C. Ing.)

G 1

p p

2 H 1 2 3 4

p

5 6 7 8 9

Allegro vivace

33 I

ff

L 24

M

tutta forza

N

4 28 0

4

19 P 17

1 2 3 4 5 6 7 8 9 string.

3

1 2 3 4 5 6

3

6 R VUOTA

1 2 3 4

5 6 7 8 9 10 11

12 13 14 4 2

ATTO I.

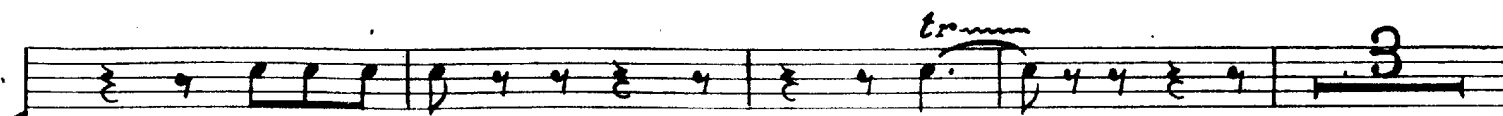
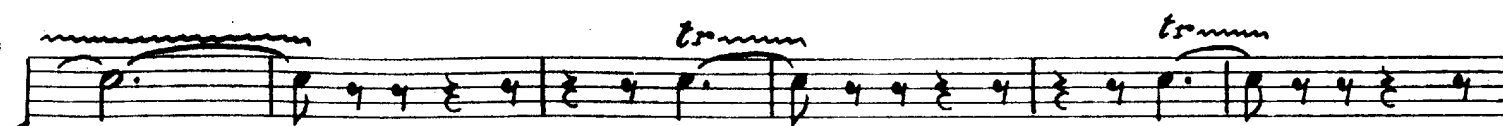
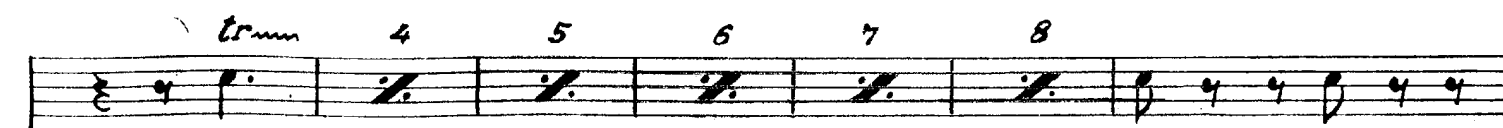
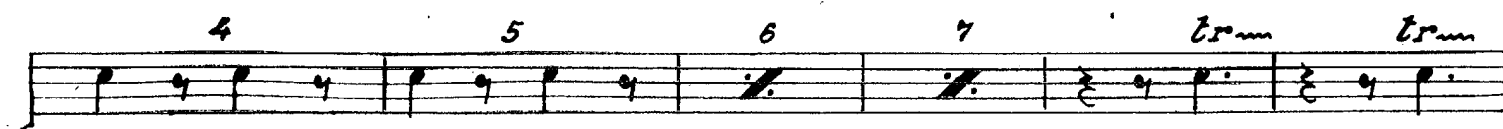
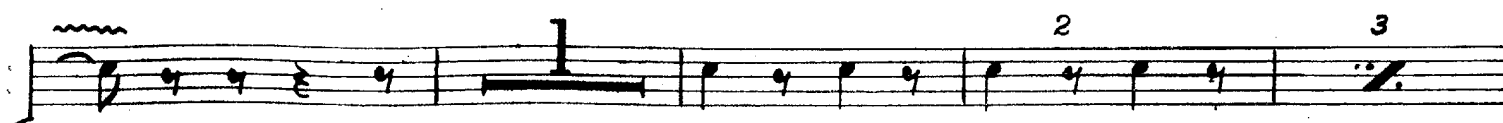
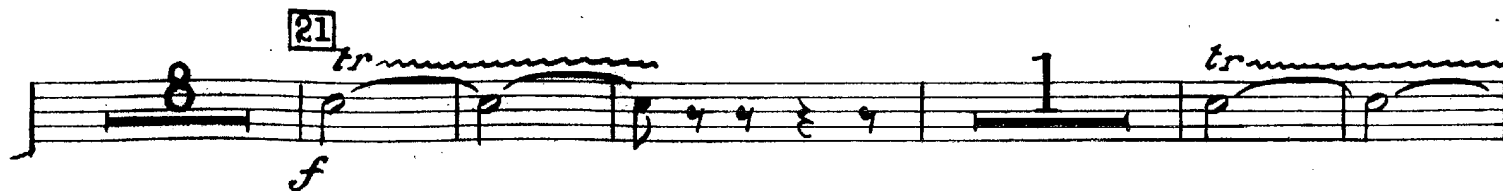
3

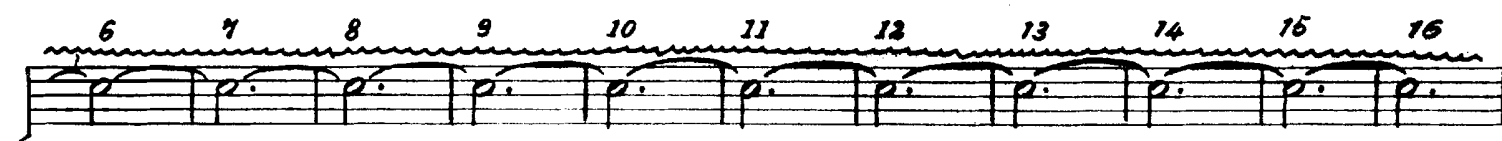
N. 1 Introduzione

[20] *Allegro con brio*

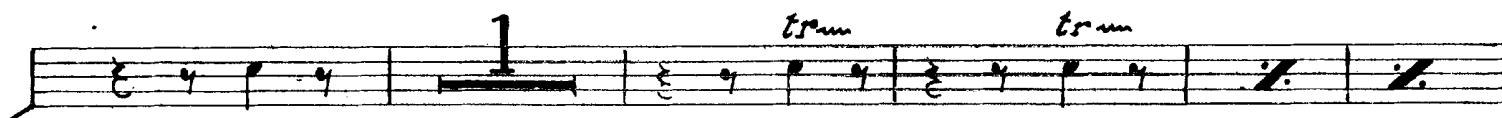
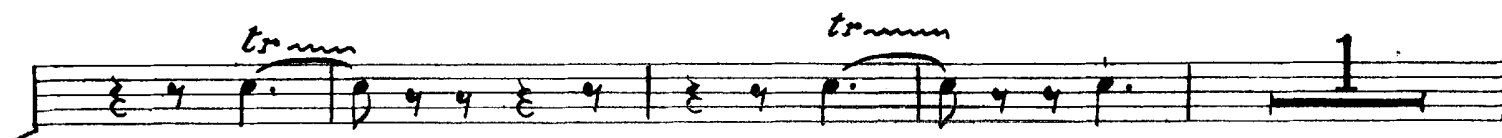
(1^o Cr. solo)

Tace sino alla chiamata





[26] *Più mosso*



5
trmn

N. 2 TACE

N. 3 Marcia recitativo ed invocazione

[55] *Allegro* [56]

16 2 3 4 5

(Corni sul palco) *p*

6 7 8 9 10 11 12 13 14 15

16 17 18 19 20 [57] 2 3 4 5

6 7 8 9 10 11 12 13 14 15

16 17 18 [58] 2 3 4 5 6 7

8 9 10 11 12 13 14 15 trmn

[58 bis] *Recit.*

f

Il resto del 1° atto TACE

ATTO II.

N. 8 Introduzione e coro

All. vivace.

2

f

1

1

1

1

2

3

4

5

Il resto tace

N. 9 - 10 - 11 TACE

N. 12 Finale secondo

Tace sino alla chiamata *sia fermo il patto e saldo il giuramento* 1

94 *Andante maestoso* 57 all' armi all' armi all' - armi 98 *Allegro* 2

3 4 5 6 2 8 9

ATTO III.

N. 13 TACE

N. 14 Marcia e coro

[21] *All^o brillante*

Musical score for N. 14 Marcia e coro, measures 21 to 28. The score is written on a single staff with a 2/4 time signature. It features various musical notations including eighth notes, quarter notes, and rests, along with dynamic markings such as *f* (forte) and *pp* (pianissimo). Trills are indicated by 'tr' and wavy lines. Measure numbers 21 through 28 are enclosed in boxes. Fingerings are indicated by numbers 1 through 7. Some measures contain repeat signs.

tr
pp
 29 16 30 14 31 16 32 17
 33 16 34 15 (Fag. Celli e Bassi soli)
f
 35 *tr*
 36 3 37 16 38 14
 1 *tr* 1 *tr*
 39 11 6 *tr* 1 *tr*
pp
 1 *tr* 1 *tr* 1 *tr*
 40 2 3 4 5 6 7 41
 1 *tr* 1 *tr* *tr* 2 3 4 5 6 7
 42 8 2 3 4 5 6 7 8 9 9 10 11 12 13 14
 43 15 16 2 3 4 5 6 7 8 44
 21

GUGLIELMO TELL

BALLABILI ATTO III.

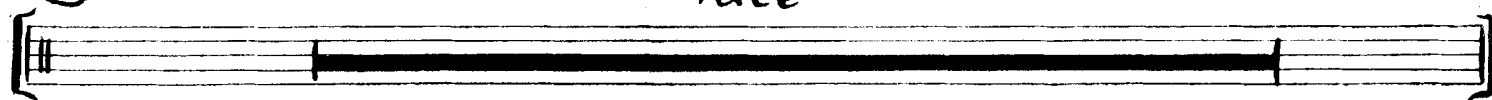
(inizio al 46)

RECITATIVO E PASSO A TRE

(46)

Tace

TRIANGOLO



BALLABILI DI SOLDATI

Allegro brillante

Musical score for the Ballabili di Soldati, measures 70 to 77. The tempo is *Allegro brillante*. The score is written for a single melodic line with a treble clef and a key signature of one sharp (F#). The time signature is 2/4. The score includes various musical notations such as trills (tr), slurs, and dynamic markings like *ff* (fortissimo) and *p* (piano). Measure numbers 70, 71, 72, 73, 74, 75, 76, and 77 are indicated at the beginning of their respective lines. The score is divided into measures of 19, 8, 4, 19, 16, 3, 4, and 21 measures respectively.

Allegro vivace

Musical score for the Ballabili di Soldati, measures 78 to 79. The tempo is *Allegro vivace*. The score is written for a single melodic line with a treble clef and a key signature of one sharp (F#). The time signature is 3/4. The score includes various musical notations such as trills (tr), slurs, and dynamic markings like *p* (piano). Measure numbers 78 and 79 are indicated at the beginning of their respective lines. The score is divided into measures of 12, 6, 2, 6, and 5 measures respectively.

Tace

N. 18 Scena preghiera e finale terzo.

Tace sino alla chiamata *fermo l'attendo* **109** *di pianto ottenebrate*

Allegro. *altra volta ancor* *Allegro* **110** *Andante* **112** *Allegro* **113**

(Celli soli) (Timp. soli) (Violini soli)

tr 2 3 4 5 6 7 8

tr 2 3 4 5

Tace sino alla chiamata:

132 *Allo vivace* *and-tema a Ges-sler* **133**

6 7 8 **134** *tr*

tr **135** 8 *tr* **136**

trm trm trm trm *tr*

137 *trm trm* *trm trm* 4

tr 2 3 4 5 6 7 8 **138**

tr

N. 19 - 20 TACE

N. 21 Finale quarto

59 *All^o maestoso*
d'Elvezia in-tera

Tace sino alla chiamata:

(Arpa)

60

61 1 2 3

p *cresc.*

4 5 6 7 8 9 10

2 3 4 5 6 7