

# Suite B-Dur (Nr. 2)

## Ouverture

J. A. Reichenauer

[Adagio]

Fagott



6



11



18



26



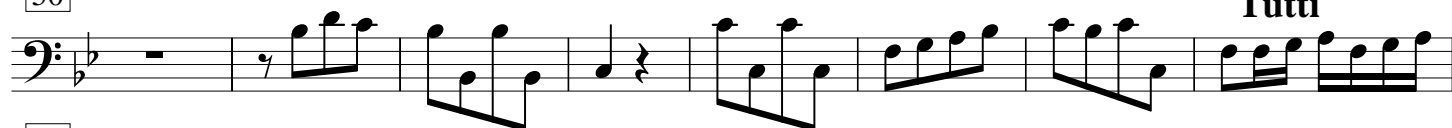
34



42



50



58



66



74



82



90



98



106

**Tutti**

114



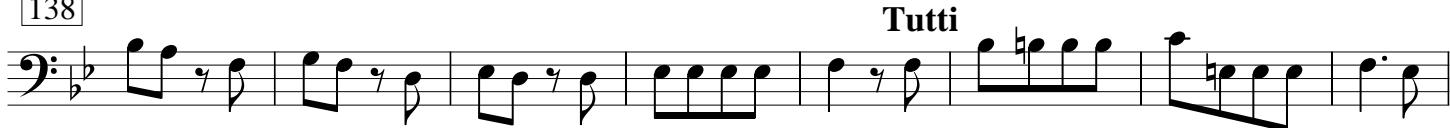
122



130

**Trio**

138

**Tutti**

146



153

**finis****[Presto]**

%

**[Bourrée]****[Allegro]**

8



15

**Trio****Tutti**

23



31

**da capo**

# Aria

*Andante*

[7]



[14]



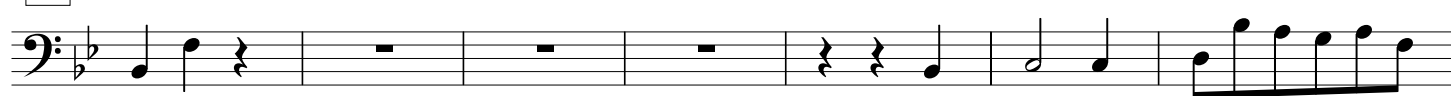
[22]



[30]



[37]



[44]



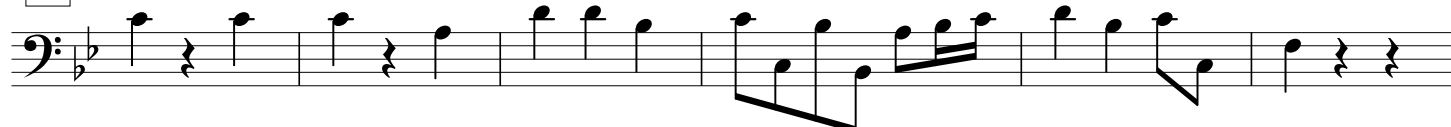
[50]



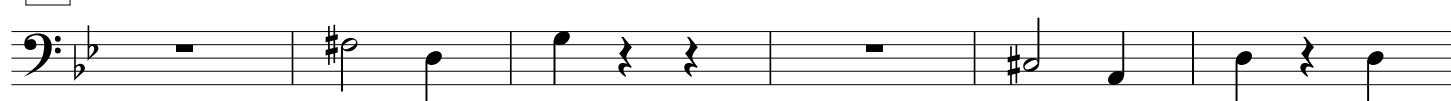
[56]



[62]



[68]

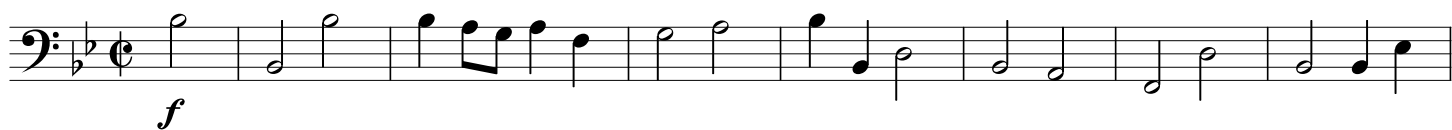


[74]



da capo

## Gavotte



## Menuet



Duetto tacet / Menuet da capo

da capo