

Camille Saint-Saens
Carnival of the Animals

CONTREBASSE

Introduction

N° 1 et Marche Royale du Lion

Andante maestoso

1^{er} Piano 8^{va}

C. BASSE

p *cresc.* **1**

Piano *ff* **2** All^o non troppo Piano

Più allegro *ff* **3**

ff **4** 2^d Piano

1^{er} Piano C. BASSE pizz *ff* **5** 1^{er} Piano C. BASSE arco

ff **6**

ff **7**

ff **8**

ff

Saint-Saens — Carnival of the Animals

2

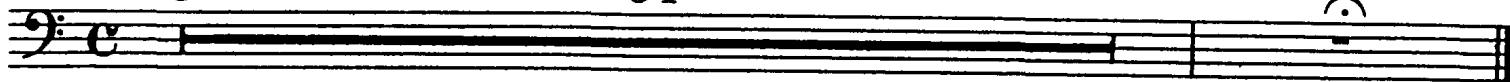
CONTREBASSE

N° 2

Poules et Coqs

Allegro moderato

34



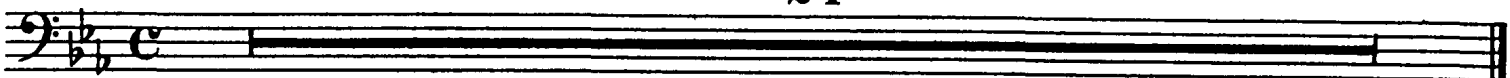
N° 3

Hémiones

(Animaux véloces)

Presto furioso

24



N° 4

Tortues

Andante maestoso

1^{er} Piano

C. BASSE



N° 5

L'Éléphant

Allegretto pomposo

2^d Piano

C. BASSE SOLI



Saint-Saens — Carnival of the Animals

CONTREBASSE

Musical score for Contrabass, measures 1-5. The score is in bass clef with a key signature of two flats (B-flat and E-flat). Measure 1 starts with a dynamic marking of *mf*. Measure 2 contains a circled number '2'. Measure 3 contains a circled number '3'. Measure 4 contains a circled number '4' and a dynamic marking of *ff*. Measure 5 ends with a fermata. The music consists of eighth and sixteenth notes with various articulations like slurs and accents.

N° 6

Kangourous

Musical score for Kangourous, measures 1-5. The tempo is marked *Moderato*. The score is in bass clef with a key signature of two flats. It features a sequence of triplets and a quintuplet. Measure 1 has a triplet of eighth notes. Measure 2 has a triplet of eighth notes. Measure 3 has a circled number '1' above a triplet of eighth notes. Measure 4 has a triplet of eighth notes. Measure 5 has a circled number '2' above a quintuplet of eighth notes. Measure 6 has a triplet of eighth notes. Measure 7 has a circled number '3' above a triplet of eighth notes. The piece ends with a fermata.

N° 7

Aquarium

Musical score for Aquarium, measures 1-39. The tempo is marked *Andantino*. The score is in bass clef with a key signature of two flats. It consists of a single long note with a fermata, spanning 39 measures.

N° 8

Personnages à longues oreilles

Musical score for Personnages à longues oreilles, measures 1-24. The tempo is marked *Tempo ad lib*. The score is in bass clef with a key signature of two flats and a 3/4 time signature. It consists of a single long note with a fermata, spanning 24 measures.

N° 9

Le Coucou au fond des bois

Musical score for Le Coucou au fond des bois, measures 1-42. The tempo is marked *Andante*. The score is in bass clef with a key signature of three sharps (F#, C#, G#) and a 3/4 time signature. It consists of a single long note with a fermata, spanning 42 measures.

Saint-Saens — Carnival of the Animals

4

CONTREBASSE

N° 10

Volière

Moderato grazioso
pizz

Musical score for Contrabass, No. 10, 'Volière'. The score is in 3/4 time and begins with a bass clef and a key signature of one flat. It starts with a *p* dynamic and includes a *pizz* instruction. The piece features several measures with first, second, third, and fourth endings, marked with boxed numbers 1 through 4. The score concludes with a *pp* dynamic and a fermata.

N° 11

Pianistes

Allegro moderato

Musical score for Contrabass, No. 11, 'Pianistes'. The score is in 3/4 time and begins with a bass clef and a key signature of one flat. It starts with a *Piano* dynamic and includes a *arco* instruction. The piece features several measures with first, second, third, and fourth endings, marked with boxed numbers 1 through 4. The score concludes with a *f* dynamic and a fermata.

Saint-Saens — Carnival of the Animals

CONTREBASSE

N° 12

Fossiles

Allegro ridicolo

ff

arco

1

2

pizz

2

arco

pizz

p

arco

2

4

p

3

2

pizz

ff

2

arco

2

pizz

4

Clarinette

5

C. BASSE

pizz

p

6

6

velle

ff

C. BASSE

arco

ff

N° 13

Le Cygne

Andantino grazioso

Saint-Saens — Carnival of the Animals

6

CONTREBASSE

N° 14

Final

Molto allegro

Piano

8⁻⁻⁻

8⁻⁻⁻

8⁻⁻⁻

8⁻⁻⁻

C. BASSE

Saint-Saens — Carnival of the Animals

CONTREBASSE

6 arco
f

7 Violon

C. BASSE
Piano

C. BASSE
p

8
cresc.

9
f

10

ff