

# Hil Eder, unge, glade par

arr. Hans Jorgen Messerschmidt

J.P.E. Hartmann (1805-1900)

Moderato (♩=108)



Trumpet Bb



Moderato (♩=108)



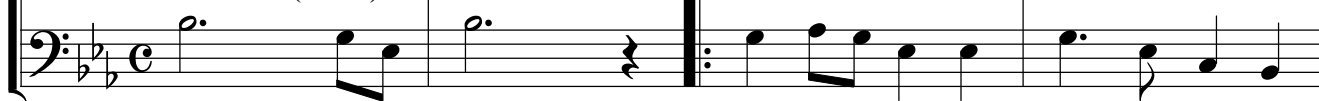
Horn F



Moderato (♩=108)



Euphonium



5



9



13

Trumpet Bb

Horn F

Euphonium

This system contains measures 13 through 16. The key signature is B-flat major (two flats). The Trumpet Bb part is in the upper staff, Horn F in the middle staff, and Euphonium in the lower staff. The music features a variety of note values including quarter, eighth, and sixteenth notes, with some beamed sixteenth notes in measure 13. Measure 14 includes a whole rest for the Horn. Measure 15 has a whole note for the Horn. Measure 16 ends with a half note for the Horn and a quarter note for the Euphonium.

17

This system contains measures 17 through 20. The musical notation continues with similar rhythmic patterns. Measure 17 has a half note for the Euphonium. Measure 18 has a half note for the Euphonium. Measure 19 has a half note for the Euphonium. Measure 20 ends with a half note for the Euphonium.

21

1. 2.

This system contains measures 21 through 24. Measures 21 and 22 are the first ending, marked with a '1.' above the staff. Measures 23 and 24 are the second ending, marked with a '2.' above the staff. A double bar line separates the two endings. The music concludes with a final half note for the Euphonium in measure 24.

26

Trumpet Bb

Horn F

Euphonium

This musical score snippet shows three staves for measures 26, 27, and 28. The key signature has three flats (Bb, Eb, Ab). The Trumpet Bb and Horn F staves use treble clefs, while the Euphonium staff uses a bass clef. In measure 26, all three instruments play a half note. In measure 27, they play quarter notes with rests. In measure 28, they play a dotted half note followed by a quarter rest. The section ends with a double bar line.

Measure	Trumpet Bb	Horn F	Euphonium
26	Half note	Half note	Half note
27	Quarter note, Rest	Quarter note, Rest	Quarter note, Rest
28	Dotted half note, Quarter rest	Dotted half note, Quarter rest	Dotted half note, Quarter rest