

Andante

ASPIRE

Christine
Snowdin

Violin I



Violin II



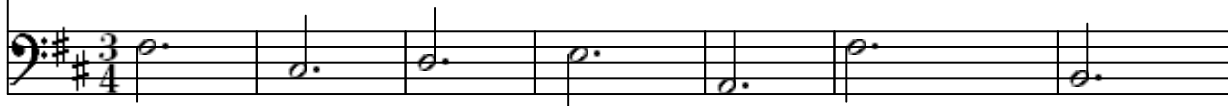
Viola



'Cello



Double Bass



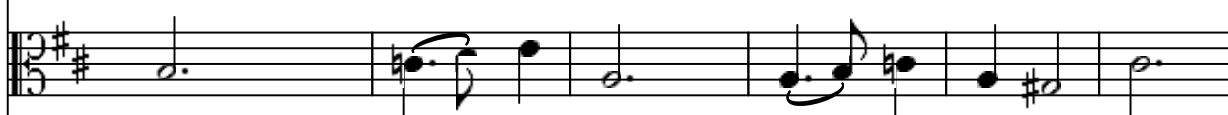
Violin I



Violin II



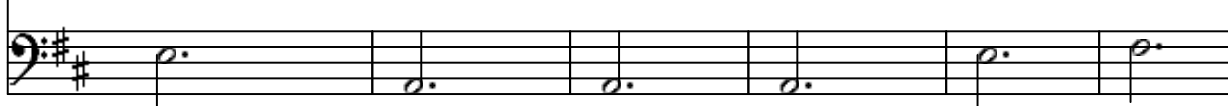
Viola



'Cello



Double Bass



Violin I

Violin II

Viola

'Cello

Double Bass

cresc. *mp*

cresc. *mp*

cresc. *p*

p

p

Violin I

Violin II

Viola

'Cello

Double Bass

p

p

p

p

p

Violin I

mf

Violin II

mp

Viola

mp

'Cello

mp

Double Bass

Violin I

mp

Violin II

mp

Viola

mf

'Cello

p

Double Bass

Violin I

cresc. *f*

Violin II

cresc. *mf*

Viola

mf

'Cello

cresc. *mf*

Double Bass

Violin I

mf

Violin II

mp

Viola

mp

'Cello

mp

Double Bass

Violin I

Violin II

Viola

'Cello

Double Bass

mp

mp

p

Violin I

Violin II

Viola

'Cello

Double Bass

mf

mp

mp

mf

Violin I

Violin II

Viola

'Cello

Double Bass

First system of a musical score for a string quartet. The key signature is one sharp (F#). The Violin I part features a melodic line with a long note in the final measure. The Violin II part plays a rhythmic eighth-note pattern. The Viola, 'Cello, and Double Bass parts provide harmonic support with sustained notes and a walking bass line. A crescendo hairpin is present in the 'Cello part.

Violin I

Violin II

Viola

'Cello

Double Bass

Second system of a musical score for a string quartet. The key signature is one sharp (F#). The Violin I part has dynamic markings of *mp* and *mf*. The Violin II part has sustained notes. The Viola part has dynamic markings of *p* and *mp*. The 'Cello and Double Bass parts have sustained notes. The 'Cello part has a dynamic marking of *mp*.

Violin I

Violin II

Viola

'Cello

Double Bass

mp

mp

mp

p

p

Violin I

Violin II

Viola

'Cello

Double Bass

Più mosso

mf

mp

Violin I

cresc. *f*

Violin II

cresc. *f*

Viola

cresc. *mp* *cresc.* *mf*

'Cello

cresc. *mf*

Double Bass

a tempo

Violin I

mf

Violin II

mf

Viola

mp

'Cello

mp

Double Bass

Violin I

Violin II

Viola

'Cello

Double Bass



mp

mp

mp

p

cresc.

cresc.

Violin I

Violin II

Viola

'Cello

Double Bass



mf

mf

mf

mf

Violin I

Violin I staff notation. Key signature: one sharp (F#). The staff contains a half note F#4, followed by a quarter note G#4, and then a sixteenth-note ascending scale: A#4, B4, C#5, D5, E5, F#5. The final measure contains a half note F#5. Dynamics: *cresc.* under the first measure, *f* under the final measure.

Violin II

Violin II staff notation. Key signature: one sharp (F#). The staff contains a half note F#4, followed by a quarter note G#4, and then a sixteenth-note ascending scale: A#4, B4, C#5, D5, E5, F#5. The final measure contains a half note F#5.

Viola

Viola staff notation. Key signature: one sharp (F#). The staff contains a half note F#4, followed by a quarter note G#4, and then a sixteenth-note ascending scale: A#4, B4, C#5, D5, E5, F#5. The final measure contains a half note F#5. Dynamics: *cresc.* under the first measure, *f* under the final measure.

'Cello

'Cello staff notation. Key signature: one sharp (F#). The staff contains a half note F#4, followed by a quarter note G#4, and then a sixteenth-note ascending scale: A#4, B4, C#5, D5, E5, F#5. The final measure contains a half note F#5. Dynamics: *cresc.* under the first measure, *f* under the final measure.

Double Bass

Double Bass staff notation. Key signature: one sharp (F#). The staff contains a half note F#4, followed by a quarter note G#4, and then a sixteenth-note ascending scale: A#4, B4, C#5, D5, E5, F#5. The final measure contains a half note F#5.