

Double Bass

# Trois Pieces

## I. Chansoneete sans paroles

Lekeu/Johnson

**Modere, sans lenteur** **2** **rall.** **A tempo** **2**

8 **rall.** **A tempo** **4** **2**

19 **rall.** **A tempo** **2** **2**

27 **rall.** **A tempo rall.** **Plus lent** **2**

33 **Tempo primo** **2** **pizz.** **p**

Detailed description: This block contains the first five systems of musical notation for 'Trois Pieces, I. Chansoneete sans paroles'. The notation is for a double bass, indicated by the bass clef and the 'Double Bass' label. The first system starts with a 6/8 time signature and a tempo marking 'Modere, sans lenteur'. It features a half note followed by a whole note, with a '2' indicating a second ending. The second system begins at measure 8 with a 'rall.' marking, followed by an 'A tempo' section with a 4-measure rest and a 2-measure rest. The third system starts at measure 19 with another 'rall.' marking, followed by an 'A tempo' section with a 2-measure rest and a 2-measure rest. The fourth system begins at measure 27 with a 'rall.' marking, followed by an 'A tempo rall.' section and a 'Plus lent' section with a 2-measure rest. The fifth system starts at measure 33 with a 'Tempo primo' marking, followed by a 2-measure rest and a pizzicato section starting with a half note. Dynamics include 'p' (piano) and 'pp' (pianissimo).

## II. Valse oubliee

36 **Assez lent** **10** **rall.** **A tempo** **arco** **p**

49 **rall.** **A tempo** **11**

65 **Un peu plus anime** **13** **rall.** **A tempo** **8** **f** **p**

91 **Tempo primo** **6**

Detailed description: This block contains the first four systems of musical notation for 'Trois Pieces, II. Valse oubliee'. The notation is for a double bass, indicated by the bass clef. The first system starts at measure 36 with a 3/4 time signature and a tempo marking 'Assez lent'. It features a 10-measure rest, followed by a 'rall.' marking and an 'A tempo' section with an 'arco' marking and a half note. The second system begins at measure 49 with a 'rall.' marking, followed by an 'A tempo' section with an 11-measure rest. The third system starts at measure 65 with a tempo marking 'Un peu plus anime', followed by a 13-measure rest, a 'rall.' marking, an 'A tempo' section with an 8-measure rest, and a half note. Dynamics include 'p' (piano), 'f' (forte), and 'dim.' (diminuendo). The fourth system begins at measure 91 with a 'Tempo primo' marking, followed by a 6-measure rest.

100 **rall.**

**4** **2**

*p*

109 **A tempo**

*mp*

116 **poco rit. A tempo accel.** **rall. e dim.**

*f* *ff* *mf*

125 **A tempo**

**6** **10** **3**

*pp*

146 **rall** **A tempo** **Tres lent**

*ppp*

**2** **11**

### III. Danse joyeuse

163 **Vif** [♩=144]

**7**

*sf* *sf* *p* *sf* *sf*

177

**4** **12**

*sf* *f* *sf* *sf*

199

*sf* *sf* *sf* *sf* *sf* *sf*

209

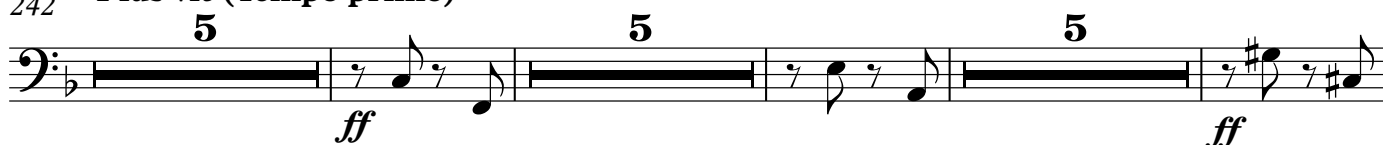
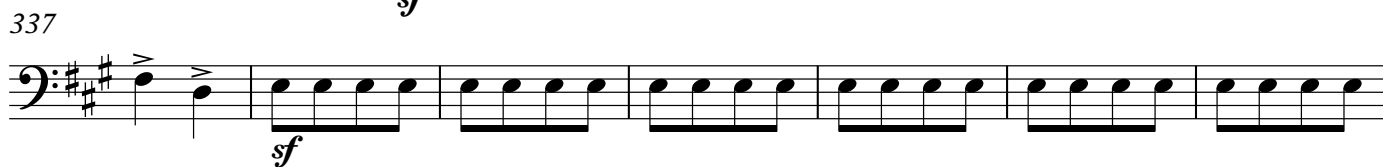
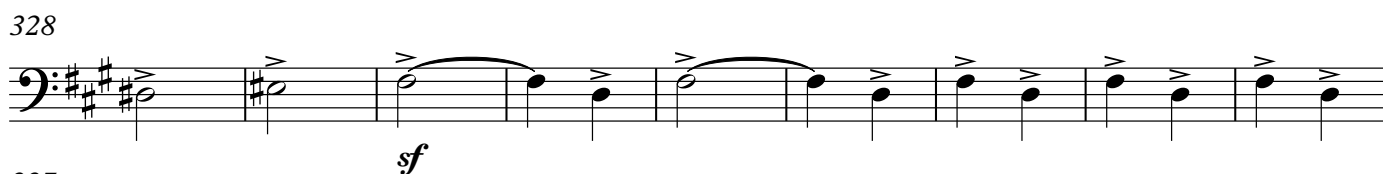
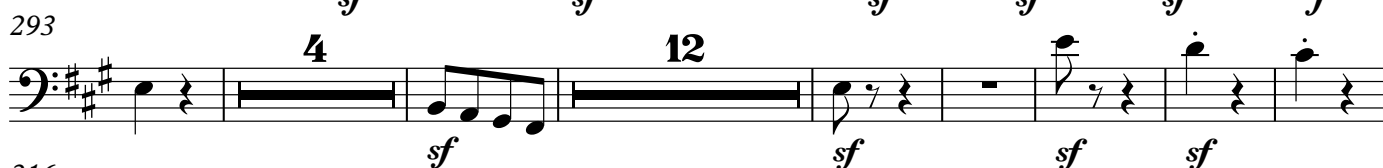
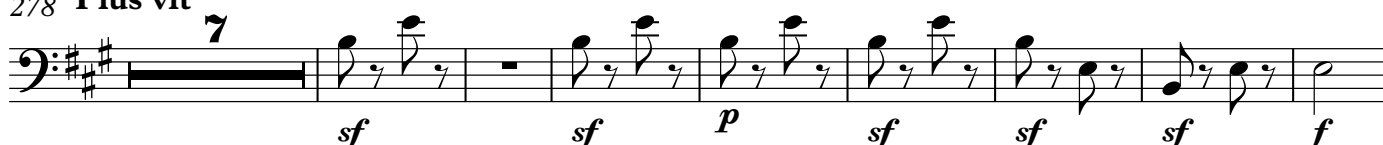
*ff* *f*

**4**

221 **[Meno mosso]**

*p*

**4**

228 **Beaucoup plus modere**237 **Plus large**242 **-Plus vit (Tempo primo)**278 **Plus vit**344 **Encore plus vite**