

## Violin

# Duo for Violin & Viola

## in C minor

Daniel Léo Simpson  
San Carlos, California  
January 22, 2002

**Allegro non troppo** ♩=126

5 *mp* 3 *tr* 3 *tr* *tr* *mf*

9 *tr* *f*

13 *mf* *cresc.* *f*

16 *mf* *mp*

19 *cresc.* *f*

22

25 *rit.*

28 **poco meno mosso** ♩=118 *p* *cresc.* *mf* *dim.* *rall.* V.S.

Violin  
moderato ♩=96

34 - - - - -

39 *p* *cresc.*

44 **Tempo I** ♩=126

47 *p*

50 *f* *mf* *cresc.*

52 *ff*

55 1. *rit.* 2. *mp*

58 *cresc.*

60 *mf*

62 *cresc.*

## Violin

3

65 *f*

68

71

74

77

79 *mp* *cresc.*

82

85 *f*

88 *f* *mp*

91 *f* *mp* *dim.* *mp* *tr*

V.S.

95 *tr* *tr* *mf* *tr*

99 *cresc.* *f*

102

105 *mp* *f*

108 *mf*

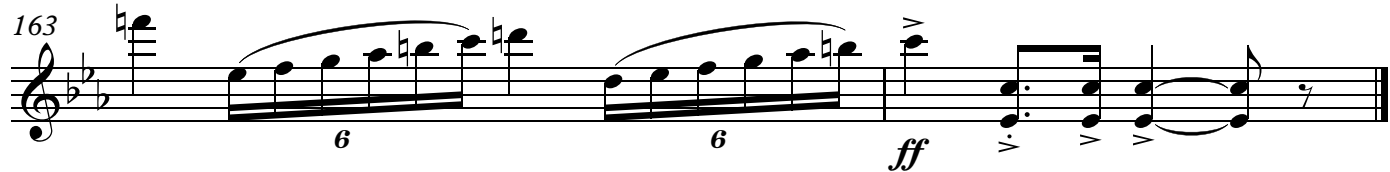
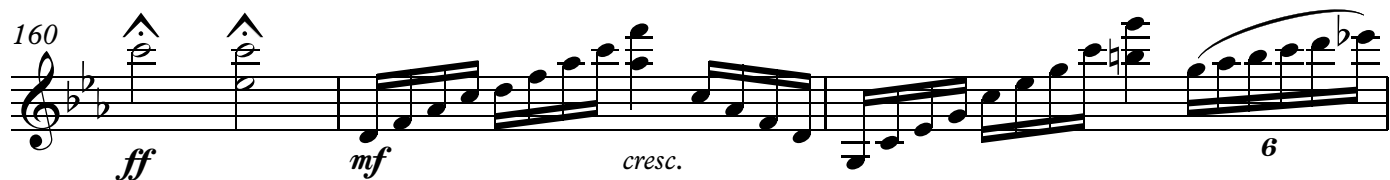
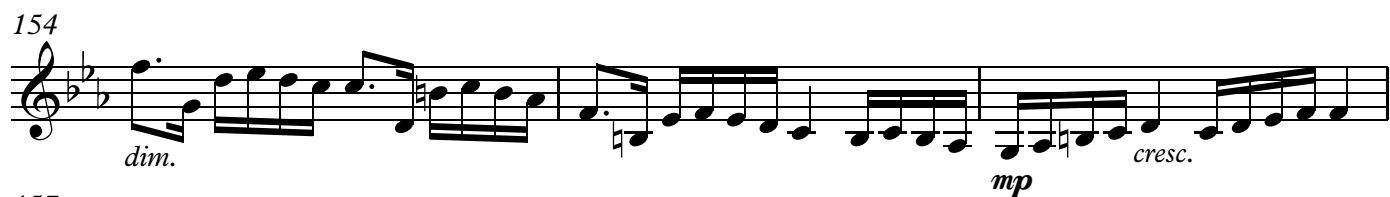
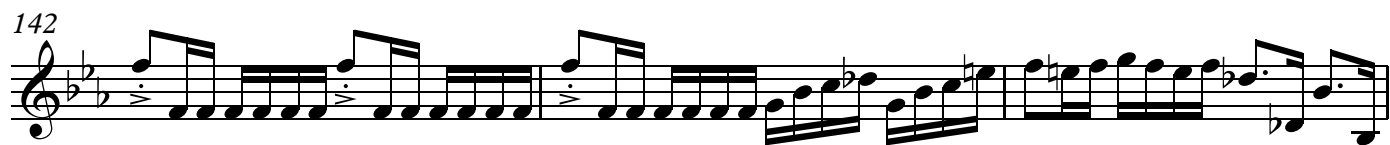
111 *f*

114 *rit.* //

118 **poco meno mosso** ♩=118 *mp* *cresc.* *f* *dim.* *rall.*

124 **moderato** ♩=96 *mf* *cresc.*

129 *f* *dim.* *p* *rit.*

134 **Tempo I** ♩=126

## Violin

## II

Daniel Léo Simpson  
San Carlos, California  
July 30, 2016

Adagio  $\text{♩} = 35$

8 *mp*

15 *p* *mp* *cresc.*

21 *mf* *mp* *mf* *p* *poco rit.*

29 *mp* *cresc.* *f* *dim.*

35 *poco meno mosso* 1. 2. *p*

41 *a tempo*  $\text{♩} = 35$  *mp* *cresc.*

45 *rit.* *f* *p* *mp* *dim.* *p*

49 *a tempo* *mp* *cresc.* *f*

53 *mf* *mp* V.S.

2 Violin

56 *mf* *a tempo* *poco rit.* *f* //

59 *mf* *rit.* *dim.*

64 *p* // *Tempo I*

71 *mp*

77 *p* *mp*

85 *cresc.*

91 *f* *mp* *cresc.* *mf*

97 *dim.* *mp* *cresc.* *f*

104 *mf* *rit.* *mp* *rall.*

111 *dim.* *p*

116

# Violin

### III

Daniel Léo Simpson  
August 8, 2016  
San Carlos, California

**Allegro assai** ♩=120

[illegible]

15

*mp* *f* *dim.* *mp*

[illegible]

32

*dim.*

*p*

(4)

[illegible]

52

*mp*



Violin score for measures 60-130. The key signature is three flats (B-flat, E-flat, A-flat). The score is written on a single staff with a treble clef. Measure numbers 60, 71, 81, 89, 94, 101, 109, 118, and 130 are indicated at the start of their respective lines. Dynamics include *f*, *mf*, *mp*, *dim.*, *p*, and *cresc.*. The score includes various musical notations such as eighth notes, quarter notes, half notes, and rests, with some measures featuring first and second endings.

60 *f* *mf*

71

81 1. *f* *mf* 2. *f*

89 *mp*

94 *mp*

101 *mp* *mf*

109 *dim.* *mp*

118 *f* *dim.* *p*

130 *cresc.* *mf*

140



149



156



161



167



176



184



191



197



The image displays a page of a musical score for the Violin part of a Duo for Violin & Viola. The page is numbered 3 in the top right corner. The score is written in treble clef with a key signature of two flats (B-flat and E-flat). The tempo and dynamics are indicated by markings such as *mp* (mezzo-piano), *f* (forte), *dim.* (diminuendo), and *mf* (mezzo-forte). The score is divided into measures, with measure numbers 140, 149, 156, 161, 167, 176, 184, 191, and 197 marked at the beginning of their respective staves. The notation includes various musical symbols such as notes, rests, beams, and slurs, indicating the rhythm and phrasing of the music.

