

# PRELUDE in E MAJOR

(from: *Lotario*. Act II, Scena 14, HWV 26)

for Trumpet and Organ

Score (03':50")

Georg Friedrich Händel (1685 - 1759)

Arr. Michel Rondeau

Allegro assai ♩ = 90

Trumpet in C

Organ

C Tpt.

Org.

C Tpt.

Org.

C Tpt.

Org.

# PRELUDE in E MAJOR - HWV 26 - Händel - Score

2  
13

C Tpt.

Org.

This system contains measures 2 through 13. The C Trumpet part plays a steady eighth-note melody. The Organ part consists of a treble staff with chords and a bass staff with a simple eighth-note accompaniment.

16

C Tpt.

Org.

This system contains measures 16 through 19. In measure 16, the C Trumpet part has a whole rest. The Organ part continues with its accompaniment, featuring some sixteenth-note passages in the treble.

19

C Tpt.

Org.

This system contains measures 19 through 22. The C Trumpet part resumes its eighth-note melody. The Organ part continues with its accompaniment, maintaining the harmonic structure.

22

C Tpt.

Org.

This system contains measures 22 through 25. The C Trumpet part continues with a more complex melodic line, including some sixteenth-note runs. The Organ part provides a steady accompaniment.

## PRELUDE in E MAJOR - HWV 26 - Händel - Score

3

25

C Tpt.

Org.

28

C Tpt.

Org.

31

C Tpt.

Org.

34

C Tpt.

Org.

# PRELUDE in E MAJOR - HWV 26 - Händel - Score

4  
37

C Tpt.

Org.

40

C Tpt.

Org.

43

C Tpt.

Org.

46

C Tpt.

Org.

## PRELUDE in E MAJOR - HWV 26 - Händel - Score

5

49

C Tpt.

Org.



52

C Tpt.

Org.



55

C Tpt.

Org.



58

C Tpt.

Org.

Fine

Fine



# PRELUDE in E MAJOR - HWV 26 - Händel - Score

6  
61

C Tpt.

Org.

64

C Tpt.

Org.

66

C Tpt.

Org.

69

C Tpt.

Org.

## PRELUDE in E MAJOR - HWV 26 - Händel - Score

7

72

C Tpt.

Org.

75

C Tpt.

Org.

79

C Tpt.

Org.

82

C Tpt.

Org.

D.S. al Fine

# PRELUDE in E MAJOR

(from: *Lotario*. Act II, Scena 14, HWV 26)

for Trumpet and Organ

## Trumpet in C

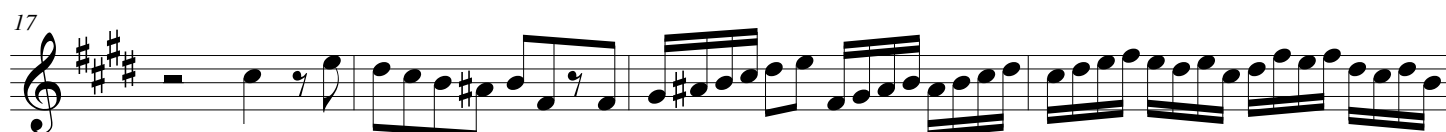
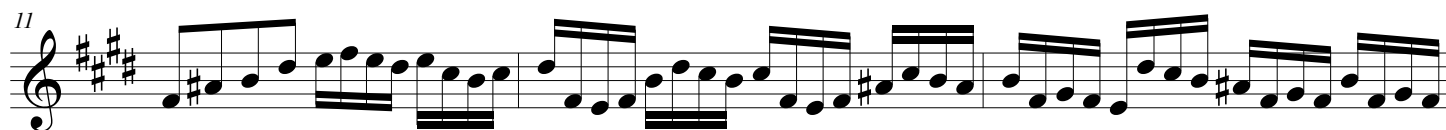
Georg Friedrich Händel (1685 - 1759)

Arr. Michel Rondeau

Allegro assai ♩ = 90

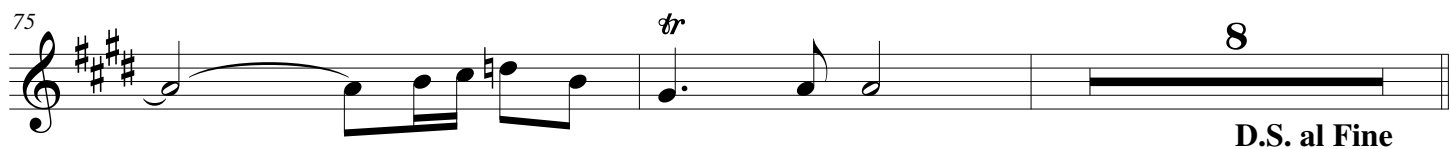
7

§





2 PRELUDE in E MAJOR - HWV 26 - Händel - C Trumpet



# PRELUDE in E MAJOR

(from: *Lotario*. Act II, Scena 14, HWV 26)

for Trumpet and Organ

## Trumpet in D

Georg Friedrich Händel (1685 - 1759)

Arr. Michel Rondeau

Allegro assai  $\text{♩} = 90$

7

11

14

17

21

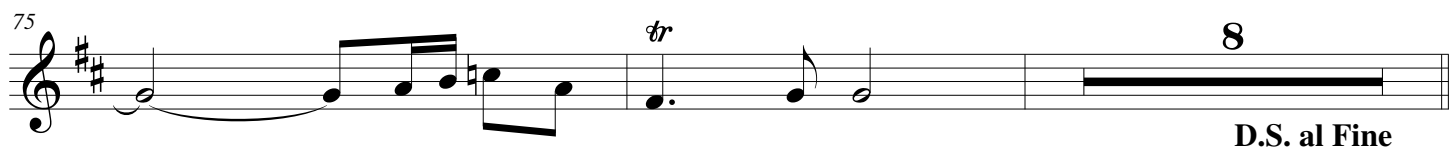
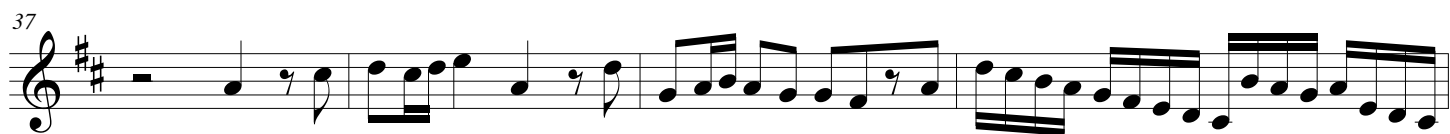
24

31

34

3

2 PRELUDE in E MAJOR - HWV 26 - Händel - D Trumpet



# PRELUDE in E MAJOR

(from: *Lotario*. Act II, Scena 14, HWV 26)

for Trumpet and Organ

Georg Friedrich Händel (1685 - 1759)

Arr. Michel Rondeau

## Organ

Trumpet in C

Allegro assai ♩ = 90

Organ

C Tpt.

Org.

C Tpt.

Org.

C Tpt.

Org.

# PRELUDE in E MAJOR - HWV 26 - Händel - Organ

2

13

C Tpt.

Org.

16

C Tpt.

Org.

19

C Tpt.

Org.

22

C Tpt.

Org.

## PRELUDE in E MAJOR - HWV 26 - Händel - Organ

3

C Tpt.

Org.

25

C Tpt.

Org.

28

C Tpt.

Org.

31

C Tpt.

Org.

34

# PRELUDE in E MAJOR - HWV 26 - Händel - Organ

4

C Tpt.

37

Organ part (Org.)

Measure 37: C Tpt. has a whole rest. Org. has a treble staff with a series of eighth notes and a bass staff with a series of eighth notes.

Measure 38: C Tpt. has a half note G4. Org. has a treble staff with a half note G4 and a bass staff with a half note G3.

Measure 39: C Tpt. has a half note A4. Org. has a treble staff with a half note A4 and a bass staff with a half note A3.

Measure 40: C Tpt. has a half note B4. Org. has a treble staff with a half note B4 and a bass staff with a half note B3.

C Tpt.

40

Organ part (Org.)

Measure 40: C Tpt. has a half note G4. Org. has a treble staff with a half note G4 and a bass staff with a half note G3.

Measure 41: C Tpt. has a half note A4. Org. has a treble staff with a half note A4 and a bass staff with a half note A3.

Measure 42: C Tpt. has a half note B4. Org. has a treble staff with a half note B4 and a bass staff with a half note B3.

Measure 43: C Tpt. has a half note C5. Org. has a treble staff with a half note C5 and a bass staff with a half note C3.

C Tpt.

43

Organ part (Org.)

Measure 43: C Tpt. has a half note G4. Org. has a treble staff with a half note G4 and a bass staff with a half note G3.

Measure 44: C Tpt. has a half note A4. Org. has a treble staff with a half note A4 and a bass staff with a half note A3.

Measure 45: C Tpt. has a half note B4. Org. has a treble staff with a half note B4 and a bass staff with a half note B3.

Measure 46: C Tpt. has a half note C5. Org. has a treble staff with a half note C5 and a bass staff with a half note C3.

C Tpt.

46

Organ part (Org.)

Measure 46: C Tpt. has a half note G4. Org. has a treble staff with a half note G4 and a bass staff with a half note G3.

Measure 47: C Tpt. has a half note A4. Org. has a treble staff with a half note A4 and a bass staff with a half note A3.

Measure 48: C Tpt. has a half note B4. Org. has a treble staff with a half note B4 and a bass staff with a half note B3.

Measure 49: C Tpt. has a half note C5. Org. has a treble staff with a half note C5 and a bass staff with a half note C3.

## PRELUDE in E MAJOR - HWV 26 - Händel - Organ

5

C Tpt.

Org.

49

C Tpt.

Org.

52

C Tpt.

Org.

55

C Tpt.

Org.

58

Fine



# PRELUDE in E MAJOR - HWV 26 - Händel - Organ

6

C Tpt.

Org.

64

C Tpt.

Org.

66

C Tpt.

Org.

69

C Tpt.

Org.

## PRELUDE in E MAJOR - HWV 26 - Händel - Organ

7

C Tpt.

Org.

72

C Tpt.

Org.

75

C Tpt.

Org.

79

C Tpt.

Org.

82

D.S. al Fine