

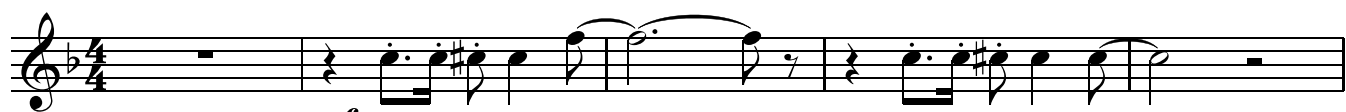
Capriccio Humoresque

for Pianoforte & Orchestra

Daniel Léo Simpson
Palo Alto, California
Spring 1996

Allegro $\text{♩}=126$

rit. _



poco meno mosso $\text{♩}=120$

poco rall. _



12 *mf* meno mosso $\text{♩}=112$ accel. _ _ _ _ _ poco più mosso $\text{♩}=120$

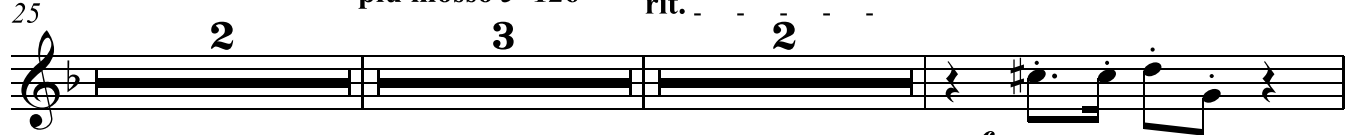


Tempo primo $\text{♩}=126$

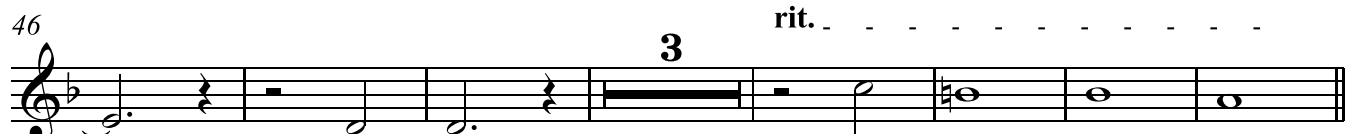
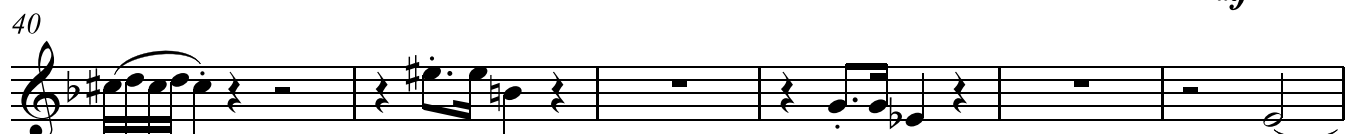
rit. _ _ _ _ _



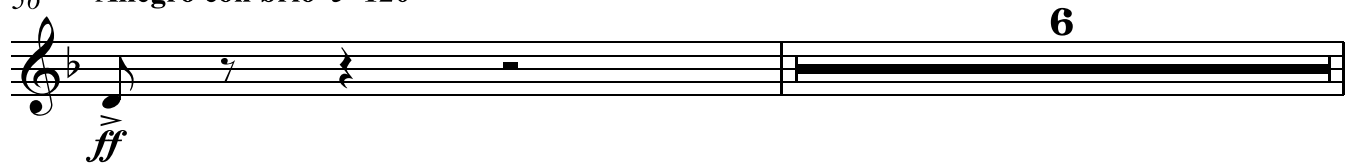
25 *f* meno mosso $\text{♩}=106$ più mosso $\text{♩}=126$ rit. _ _ _ _ _ più mosso $\text{♩}=126$



33 *mf* meno mosso



56 Allegro con brio $\text{♩}=120$



63 poco rit. .

f *f*

poco meno mosso ♩=120 poco rit. . a tempo ♩=126

71 13 6 3

mf *mf*

96 2

f *mf*

101

mf *f*

105 poco rit. meno mosso ♩=108 accel.

mf

110 a tempo ♩=126

f *f* *ff*

114 rit.

mp *f*

118 meno mosso ♩=108

12

mp *mp*

134 2 2 rit. .

mf

140 meno mosso ♩=83 accel. . più mosso ♩=104

3 3

147 *accel.*

mf *mf* *f* *f*

151 *Allegro con brio* ♩=120
12

mf *mf* *mf* *mf*

167

f *ff* *f*

171 *poco accel.*

f *f*

178 *tempo giusto* ♩=126
13

ff *mf*

195

mf *mf* *mf*

201

ff *f* *f* *mf*

209

mp *mp* *mp* *mp*

213 *poco rit.*

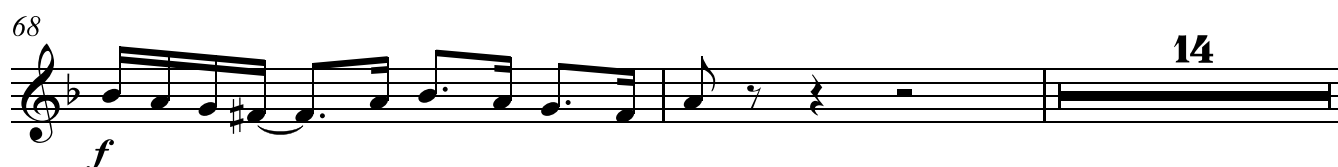
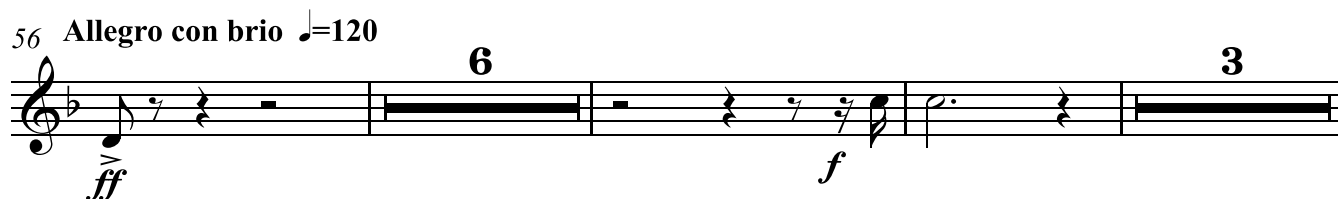
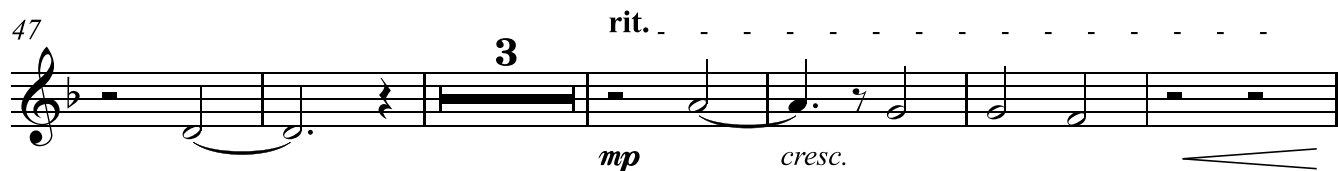
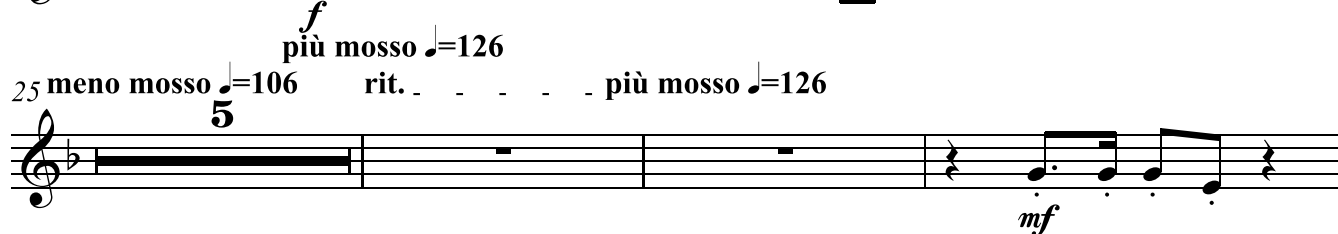
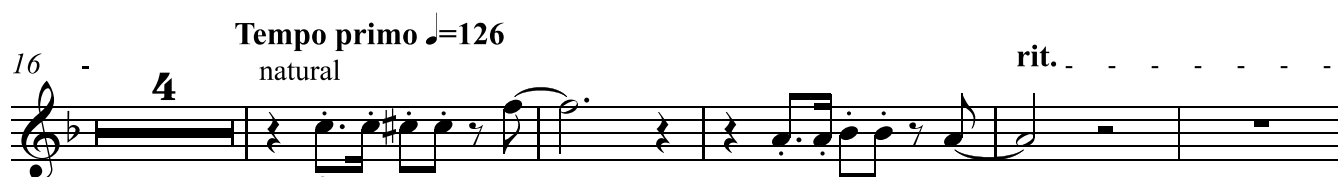
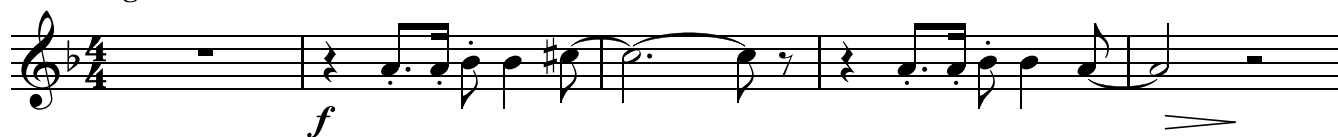
ff *mp* *ff*

Trumpet in B♭ - 2

Capriccio Humoresque for Pianoforte & Orchestra

Daniel Léo Simpson
Palo Alto, California
rit. Spring 1996

Allegro ♩=126



84 poco rit. . . . a tempo ♩=126

6

mf

mf

3

96

2

f

mf

101

mf

f

105 poco rit. . . . meno mosso ♩=108 accel. . . .

3

110 a tempo ♩=126

f

f

ff

2

116 rit. . . . meno mosso ♩=108

12

f

mp

132

mp

2

2

rit. .

più mosso mf ♩=104

140 meno mosso ♩=83 accel. . . . accel. . . .

3

3

mf

mf

f

150 Allegro con brio ♩=120

12

f

165

f

168 *ff* *f* *f* poco accel. 2 3

177 tempo giusto ♩=126 13 *f* *ff* *mf*

194

201 *ff* *f* *f* *mf* 4

209 *mp*

213 *ff* *mp* *ff* poco rit. . . .

Trumpet in B♭ - 3

Capriccio Humoresque
for Pianoforte & Orchestra

Daniel Léo Simpson
Palo Alto, California
Spring 1996

Allegro ♩=126

rit. -

6 poco meno mosso ♩=120 poco rall. _ meno mosso ♩=112 accel. _ _ _ _ _

5 3



16 poco più mosso ♩=120 Tempo primo ♩=126 rit.

4 natural

25 **meno mosso** ♩=106 **più mosso** ♩=126 **rit.** **più mosso** ♩=126

2 **3** **2**

mf

33 **meno mosso**


mf

41 rit. - - - - -

mp *mp* *mp* *cresc.*

[illegible]

68 **14**



f

84 poco rit. . . . a tempo ♩=126

6 3

mf *mf*

96

2

f *mf*

101

mf *f*

105 poco rit. meno mosso ♩=108 accel.

3

110 a tempo ♩=126

2

f *f* *ff*

116 rit. meno mosso ♩=108

12

f *mp*

132

2 2 rit.

mp *mf*

140 meno mosso ♩=83 più mosso ♩=104

3 accel. accel.

3

mf *mf* *f*

150 *Allegro con brio* ♩=120
12
f

165
f

168 *poco accel.*
ff *f* *f* **2** **3**

177 *tempo giusto* ♩=126
13
f *ff* *mf*

194

201 **4**
ff *f* *f* *mf*

209
mp

213 *poco rit.*
ff *mp* *ff*