

Streichquartett op.3 #1 in C-Dur

~ 1796

Cello

Franz Krommer (1759 - 1831)

Violoncello

I

[3 : 2 - 1]

Moderato

Moderato

p pizz.

8

The first staff of music is written in bass clef with a key signature of one sharp (F#). It begins with a quarter note G2, followed by a quarter note A2, a quarter note B2 with a sharp sign, and a quarter note G2. This is followed by a quarter rest, an eighth rest, and a quarter note A2. Then, there is a quarter note B2 with a sharp sign, a quarter note A2, a quarter note G2, and a quarter note F#2. This is followed by a quarter rest, an eighth rest, and a quarter note A2. Then, there is a quarter note B2 with a sharp sign, a quarter note A2, a quarter note G2, and a quarter note F#2. This is followed by a quarter rest, an eighth rest, and a quarter note A2. The staff ends with a quarter note B2 with a sharp sign, a quarter note A2, a quarter note G2, and a quarter note F#2. The word "arco" is written below the staff.

14

The bass line of 'The Rose Tree' is written on a single staff in bass clef. It consists of six measures. The first measure contains a quarter rest, a quarter note G#2, and a quarter note F2. The second measure contains a quarter rest, a quarter note E2, and a quarter note D2. The third measure contains a quarter rest, a quarter note C2, and a quarter note B1. The fourth measure contains a quarter rest, a quarter note A1, and a quarter note G1. The fifth measure contains a quarter rest, a quarter note F1, and a quarter note E1. The sixth measure contains a quarter rest, a quarter note D1, and a quarter note C1. The notes are connected by a slur, indicating a continuous melodic line.

20

The bass line of 'The Rose Tree' is written in bass clef. It begins with a quarter rest, followed by a quarter note G2, a quarter note F2, and a quarter note E2. This is followed by a half note D2, a half note C2, and a half note B1. The next measure contains a quarter note A1, a quarter rest, and a half rest. This is followed by two measures of whole rests. The eighth measure contains a half note G1, a half rest, and a quarter rest. The final measure contains a half note F1, a half note E1, and a half note D1, all beamed together.

29

36

The musical notation for the bass line of 'The Sound of Silence' is shown on a single staff. It begins with a bass clef and a key signature of one sharp (F#). The tempo is marked 'Andante'. The notation includes a series of eighth notes, a triplet of eighth notes, and a final measure with a sharp sign and a 'Solo' instruction.

43

49

A musical score for "The Rose Tree". The piece is in G major, 3/8 time, and consists of two systems. The first system has a treble clef and contains a melody starting on G4, moving up stepwise through A4, B4, C#5, D5, E5, F#5, and ending on G5. The second system also has a treble clef and continues the melody from G5 down stepwise through F#5, E5, D5, C#5, B4, A4, and ending on G4. There are no lyrics present in the image.

55 *8va*

62

The bass line of 'The Rose Tree' is written on a single staff in bass clef. It begins with a whole rest, followed by a quarter rest, then a quarter note G2, a quarter note F2, and a quarter note E2. This is followed by a half note D2, a half note C2, and a half note B1. The next measure contains a half note A1, a half note G1, and a half note F1. The final measure consists of a half note E1, a half note D1, and a half note C1. The key signature has one flat (Bb), and the time signature is 4/4.

69

[illegible]

76

[illegible]

82



90



96



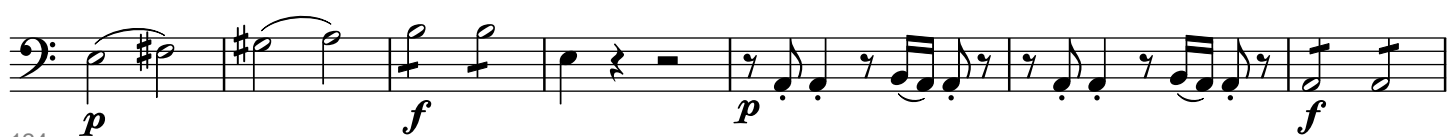
102



110



117



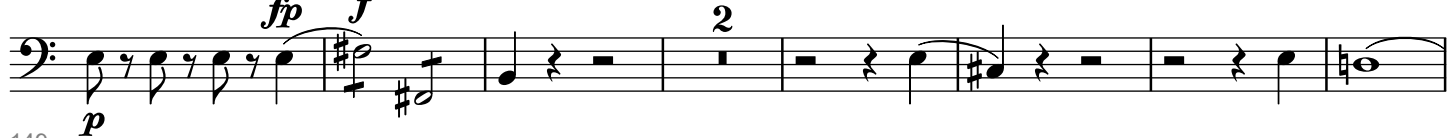
124



132



140



149



158



165



172



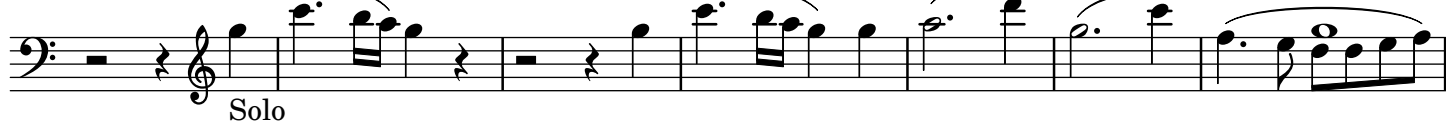
181



189



196



203



208



215



223



231



237



244



251



257



265

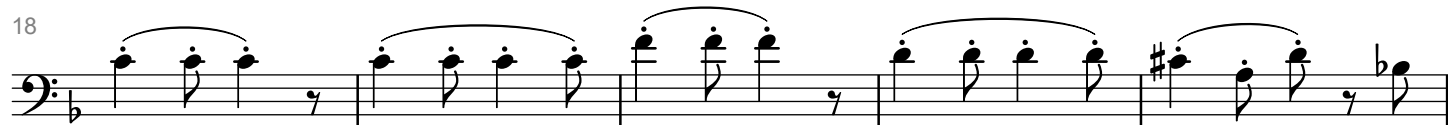
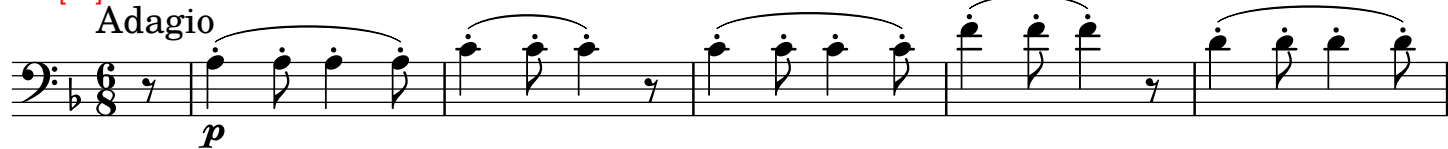


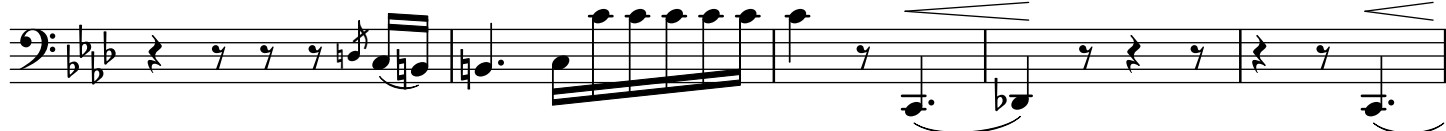
271

II

[2]

Adagio





III
RONDO

[2]

[keine Tempo-Angabe]

19 **f** **p**

32 **f**

44 **p**

57 **f** **p**

72 **2**

91 **f**

101 **p** **f**

116 **Minore** **ff**

127 **1**

137 **2**

145



166



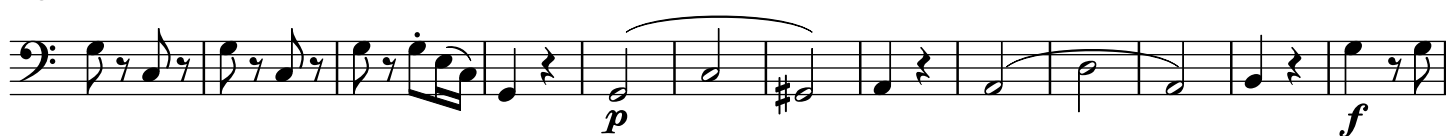
181



198



216



229



241



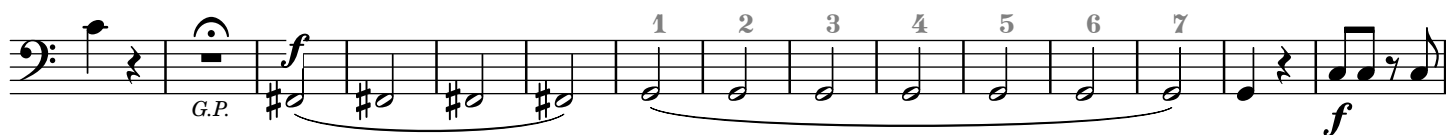
254



266



277



292



307



320