

# Piano Quartet No. 2 in E-Flat Major

Oboe 1

1. Allegro

Wolfgang Amadeus Mozart

Joshua Choe

**Allegro**

*f* *dolce*

7 *p*

13 *p* *mp*

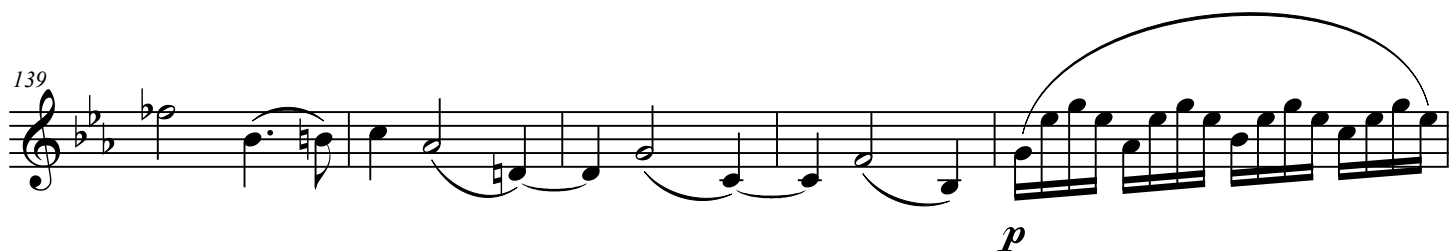
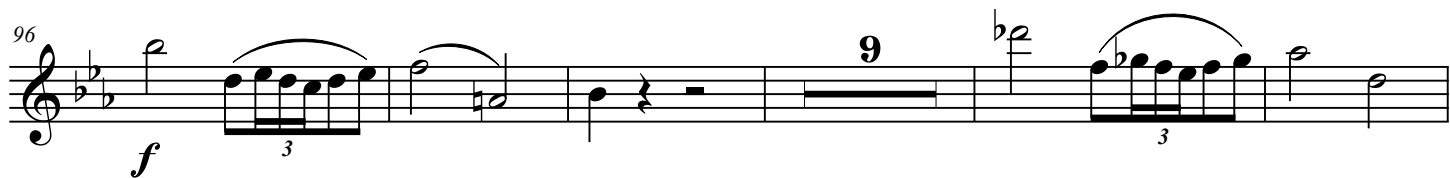
23 *f*

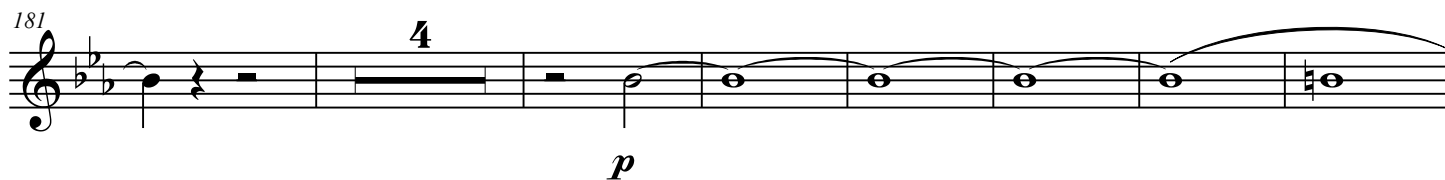
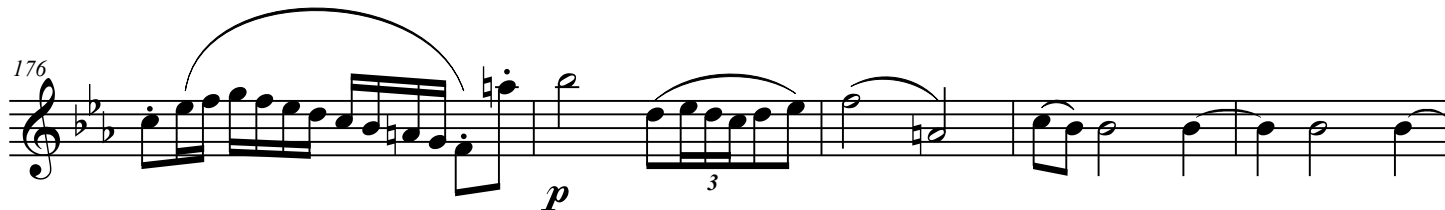
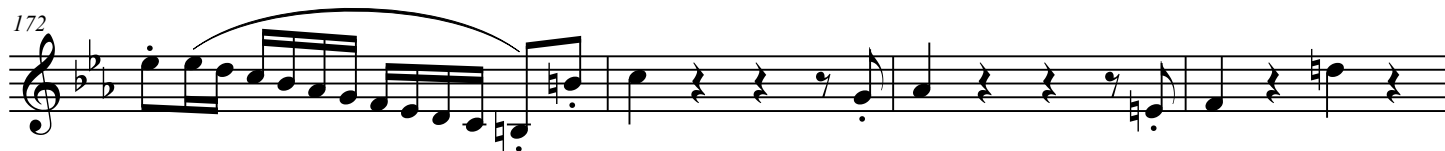
28 *p* 3

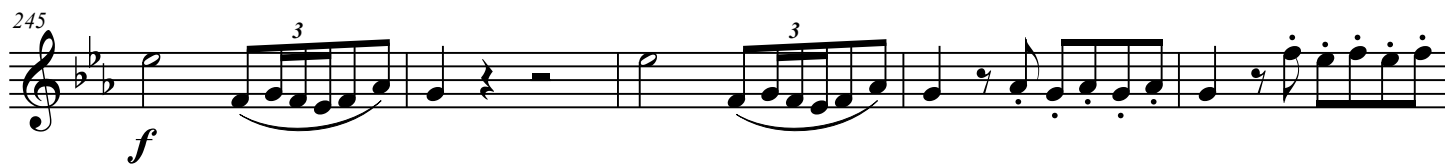
34

39 *p* 3

45 *p* *cresc.* *f* *mp* 35







## Oboe 1

**Wolfgang Amadeus Mozart**  
Joshua Choe

4

*p* *mp* *p* *p* 3

13 3 8 *p*

27 *f* *pp*

34 *mp* *p* *p* *cresc.* *f* *p* 5

47 2 *p* 3 *p* *cresc.* *f* 5

59 *p* *cresc.* *f* *p*

64 *cresc.* *f* *p* 3 *p* 3 2

74 4 *p* *mp* *p* 3

©2020 Joshua Hoe

83 *mp p* *mp p*

91 *f*

99 *pp* *mp p*

107 *p cresc.* *f* *p* *3*

120 *p* *mp p* *3*

126 *p* *p*

Detailed description: This page of a musical score for Piano Quartet No. 2 in E-Flat Major contains measures 83 through 131. The music is written for a single melodic line in treble clef with a key signature of three flats (B-flat, E-flat, A-flat). The notation includes various rhythmic patterns, including eighth and sixteenth notes, and rests. Dynamic markings such as *mp*, *p*, *f*, *pp*, and *cresc.* are used to indicate volume changes. There are also articulation marks like slurs and accents, and some measures contain triplets or other specific rhythmic groupings indicated by the number '3'.

# Piano Quartet No. 2 in E-Flat Major

Oboe 1

3. Allegretto

Wolfgang Amadeus Mozart  
Joshua Choe

**Allegretto**

7

*f*

11

16

4

*p*

18

43

*f*

6

54

*p cresc.*

*f*

61

66

2

*p*

74

152

Musical notation for measure 152, featuring a treble clef, key signature of two flats, and a complex melodic line with various ornaments and ties.



157

*p*

164

5

*f*

174

5

184

*mp*

191

*f*

*mp*

*f*

198

*p*

204

2

3

6

215

*p*

*f*

*f*

Detailed description of the musical score: The score is written for a single melodic line in E-flat major. It begins at measure 157 with a piano (p) dynamic and a slur over measures 157-163. At measure 164, there is a five-measure rest (5) followed by a forte (f) dynamic. The melody continues through measure 173, where there is another five-measure rest (5). At measure 174, the melody resumes. At measure 184, the dynamic is mezzo-piano (mp). At measure 191, the dynamic is forte (f). At measure 198, the dynamic is piano (p). At measure 204, there is a triplet (3) and a six-measure rest (6). At measure 215, the dynamic is piano (p). At measure 224, the dynamic is forte (f).

