

Clarinet in B \flat

1989 Concerto for Clarinet

Stephen W. Beatty (1938)

$\text{♩} = 105$ 8^{va}-----

2 *mf* *f* *mf* *f* *pp* *mf*

6 (8) *f* *mf* *mf*

11 *f* *mf* *f* *mp* *f*

16 *mf* *mp* *mf*

19 *f* *mf* *f* *mp* *mf* *mp* *f* *mf*

23 *f* *mp* *mf*

28 *mp* *mf* *pp* *mf* *mp*

32 *p* *mp* *mf* *mp* *p*

37

f *mf* *mf* *mp* *f*

40

mf *f* *mf* *f* *p*

45

mf *mp* *mf* *mp* *f*

48

mf *mp* *mf* *mp* *p* *mf*

53

mf *f* *mf* *mf*

60

mf *p* *mf* *f* *mf*

65

f

73

f

78

mf *ff* *f* *f* *mp* *f* *mp*

82

mf *f* *f* *mf*

90 *f* *mp* *mf*

94 *mp* *mf* *f*

98 *mf* *pp* *mf* 3

104 *mp* *f* *mf* *f* *mf*

107 *p* *mp* *mf* *p*

110 *mp* *mp*

114 *mf* *mf* *mp*

117 *mp* *pp* *mp* *p*

121 *f* *mf*

124 *ff* *mf* *f* *mf* 2

129

133

138 (8)

143

147

152

156

160

169

172

f

mf

f

mf

ff

mf

f

mp

f

mf

f

mf

pp

mp

f

ff

f

ff

f

mf

p

mf

fff

f

fff

f

8va

2

2

2

2

4

175



178



182



186



190



193



199



203



206



214

f mf f mf f mf f mp

218

mf f mf

222

f mf ff mf mp

226

f ff f mf

231

f mf f mf

238

f mf mp

242

mf f mp ppp f

247

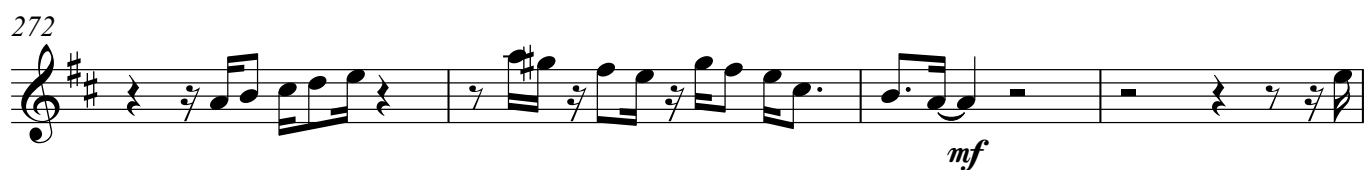
mf f ff mf f mf

251

f mf mp mf

255

mp mf f mf



293

297

300

310

313

317

325

330

334

f *mf* *ff* *p* *mp*

Violin I

1989 Concerto for Clarinet

Stephen W. Beatty (1938)

$\text{♩} = 105$

mf *mp* *mf* *f*

mf *f* *pp* *mf* *f* *mf*

f *mf* *f* *mp* *mf*

p *mf*

mp *mf*

mp *mf* *f*

mf *p* *mf* *f* *mf*

mp *mf* *mp* *f* *mf*

mf *f* *mf*

Violin I musical score, measures 32-65. The score is written in treble clef with a key signature of one flat (B-flat). The dynamics are indicated by *mp*, *f*, *mf*, *p*, and *ff*.

Measures 32-35: *mp*

Measures 36-38: *f*, *mf*, *mp*

Measures 39-41: *mf*, *mp*, *f*, *mf*, *f*, *mf*, *f*

Measures 42-45: *mf*, *p*, *mf*, *f*, *mp*, *mf*, *f*, *p*

Measures 46-48: *f*, *mp*, *f*, *mf*

Measures 49-51: *f*, *mf*, *f*, *mf*, *f*

Measures 52-55: *mf*, *f*, *mf*, *f*

Measures 56-59: *ff*, *mf*, *f*, *mf*

Measures 60-64: *p*, *mf*, *f*, *mf*

Measures 65-68: *mp*, *mf*, *f*, *mf*

69 *f* *mf*

73 *ff* *p* *f* *mf*

77 *pp* *f* *mf*

80 *f* *mp* *f* *mf* *f*

84 *mf* *f* *mf* *ff* *mf*

88 *f* *mf* *f* *mf*

92 *f* *mf* *f* *mp* *mf* *mp*

96 *f* *mp* *f* *mf*

99 *8va* *f*

103 *mf* *p* *mf* *f* *mf*

107

mp *mf*

110

mp *mf* *f*

115

mf *f* *8va*

118

mp *pp* *mp* *p* *mf* *mp* *8va*

122

mf *ppp* *mf* *p* *ff* *mf* *8va*

126 (8)

f *mf* *f*

129

mf *f*

133

mf *f* *mf*

137

f *mf*

140

143 *f* *mf* *mp* *mf* *f*

146 *mf* *f*

150 *8va* *mf* *pp* *mp*

153 *f* *mf* *f* *mf*

157 *f*

161 *8va* *mf* *mp* *mf*

164 (8) *p* *mf* *mp* *mf* *f*

167 (8) *mp* *mf* *mp*

171 *mf* *mp* *mf* *mp* *f* *8va*

175 *p* *mp* *mf* *mp* *f* *mf*

178 *f mp mf mp mf f*

182 *p mp mf pp mf*

186 *mp mf*

189 *p pp mp mf mp*

192 *f mp mf*

196 *f mf f mp f mf p mf*

200 *mp f mf*

204 *f pp mf ff f mf*

208 *mp mf f mf f pp f*

212 *mf ff f ff f*

216 *mf* *ff* *f* *ff* *mf*

220 *ff* *mf* *f* *mf* *f*

224 *mf* *f* *mf* *p* *mf* *mp*

228 *f* *ff* *f* *mf*

231 *f* *mf* *f* *mf*

235 *f* *mf* *f* *ff* *p* *mf* *f*

239 *mf* *f* *mf* *f* *mf*

243 *f*

247 *8va* *mf* *f* *ff* *mf* *f* *mf*

251 *f* *mf* *mp* *mf*

Violin I

255 *mp* *mf* *f* *mf* *f*

259 *mf* *f* *mf* *f* *mf* *f* *mf*

263 *f* *mf* *8va*-----

267 (8) *f* *mf* *f*

270 *mf* *p* *mp* *mf*

274 *f* *mp* *8va*-----

277 (8) *mf* *f* *mf*

280 *f* *mf* *f* *mf* *8va*-----

284 *mp* *mf* *f* *mf*

288 *f* *mf* *f* *ff*

292 *f mf f mf f mp mf*

296 *p mp f mf mp f* *8va*

300 (8) *mf f*

304 (8) *8va mf*

308 *f mp mf f*

312 *mf f mf f mf*

316

320 *8va mp mf pp mf*

324 *f mf f mf*

328 *mp mf p* *8va*

332 (8)

The musical score for Violin I consists of two staves. The first staff, labeled 332 (8), contains measures 332 through 335. It begins with a treble clef and a key signature of one sharp (F#). The melody starts on a quarter rest, followed by eighth notes G4, A4, B4, and C5. The dynamics are marked *mp*, *p*, *mp*, *f*, *mf*, *mp*, and *mf*. The second staff, labeled 335, continues the melody with eighth notes D5, E5, F#5, and G5, followed by a quarter note G5. The dynamics are marked *p* and *mp*. The piece concludes with a double bar line.

335

Violin II

1989 Concerto for Clarinet

Stephen W. Beatty (1938)

 $\text{♩} = 105$

4

8

12

22

37

41

44

48

52

mf *mp* *mf* *f*

mf *f* *pp* *mf* *f* *mf*

pp *f* *mf* *f* *mf* *f* *mf*

f *f* *mf* *f* *mf*

mf *f* *mf* *f* *mf*

f *mf* *p* *mf* *f*

mp *mf* *f* *p* *f* *mp* *f*

mf *f* *mf* *f* *mf* *f*

mf *f* *mf* *f* *mf* *f*

mf *f* *mf* *f*

56

ff mf f mf

60

5

68

f mf f

72

11

mf f mf f mf

86

f mf ff mf f mf

90

8

101

9

113

f mf

117

f mp pp mp p mf

121

mp mf ppp mf p ff

125 *mf* *f* *mf* *f*

128 *mf* 5

136 *f* *mf* *f* *mf*

139 5

147 *f*

151 9 *mf* *mp*

163 *mf* *p* *mf* *mp*

166 *mf* *f* *mp* 5

174 *f* *p* *mp*

176 *mf* *mp* *f* *mf* 5

183

pp mf

187

7

mf f mf

198

f mp f mf p mf mp

202

4

ff mp mf f mf

210

12

f pp f mf ff f

226

mf p mf mp f ff f

230

mf f mf

233

10

f mf f

247

mf f ff mf f mf

251

f mf mp mf

255

mp *mf* *f* *mf* 6

264

f *mf* *f*

268

mf *f* *mp* *mf* *p*

272

mp *mf* *f*

276

mp *mf* *f* *mf*

279

f *mf* *f*

283

mf *mp* *mf*

286

f *mf* 8

296

mf p mp f mf mp f

300

mf f

304

mf f mf f

309

10

mf mp mf

322

pp mf

326

f mf f mf p

2

332

mf mp p mp f mf mp mf

335

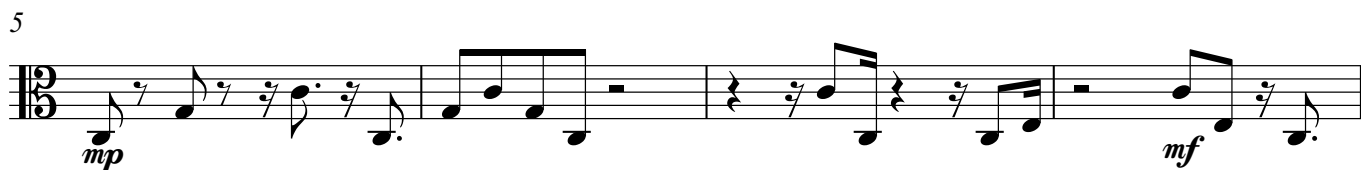
p mp

Viola

1989 Concerto for Clarinet

Stephen W. Beatty (1938)

$\text{♩} = 105$



32



37



41



45



49



53



58



62



67



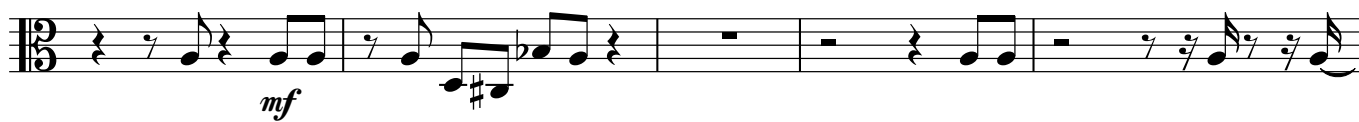
72



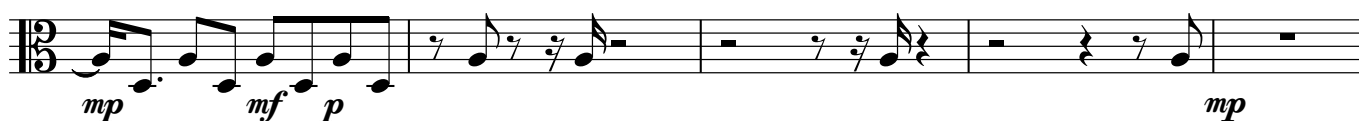
77



82



87



92



100



104



113



116



121



125



129



133



137



142



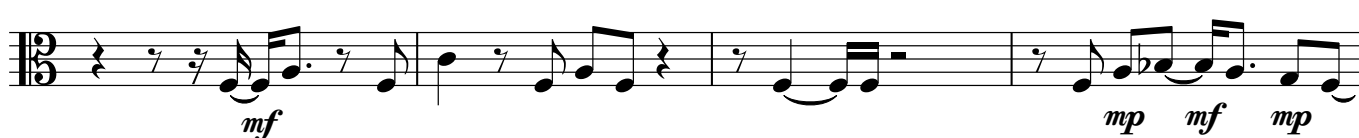
146



150



154



158



162



166



170



174



179



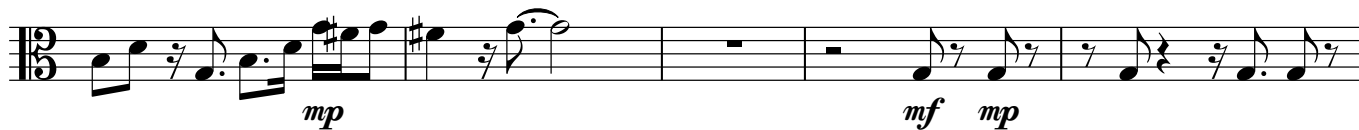
183



188



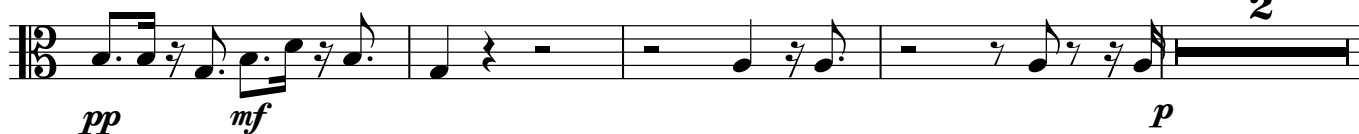
192



197



201



207



212



216



221



226



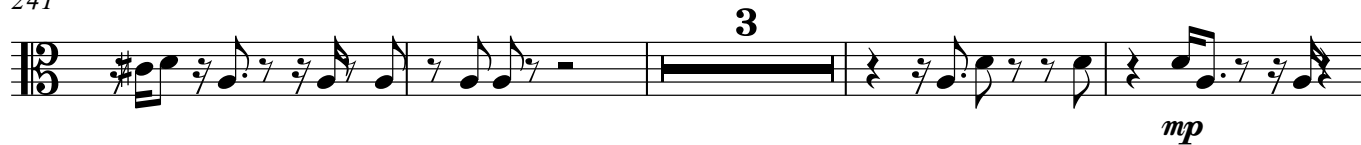
231



236



241



248



253



258



263



267



271



276



280



284



289



293



299



304



308



313



318



322



326



331



335



Violoncello

1989 Concerto for Clarinet

Stephen W. Beatty (1938)

♩ = 105



5



9



13



17



21



25



29



33



37



41



45



49



53



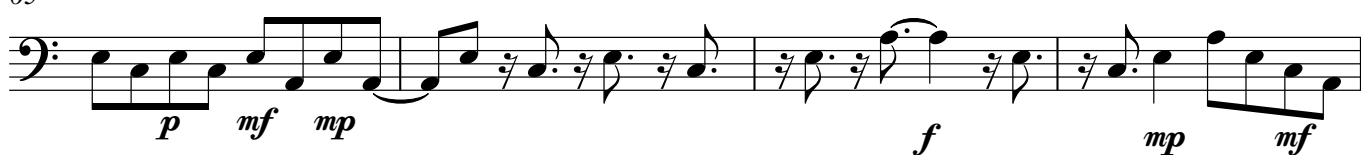
57



61



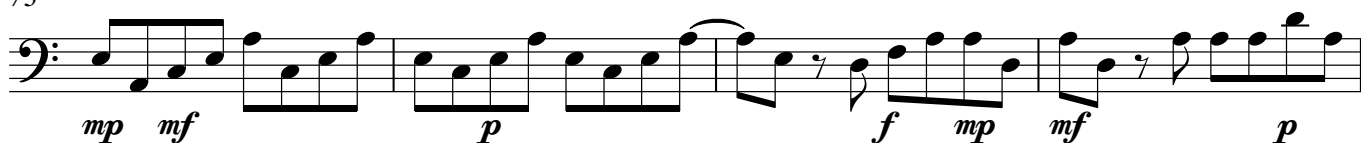
65



69



73



77



81



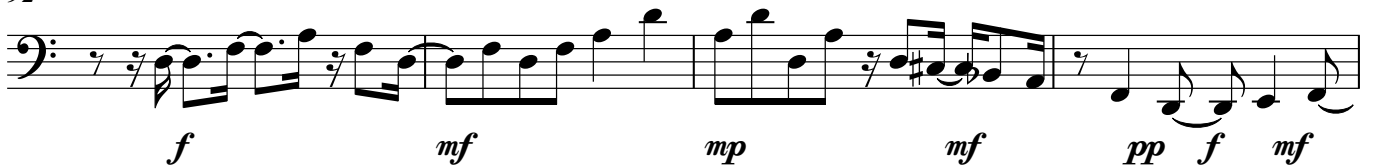
85



89



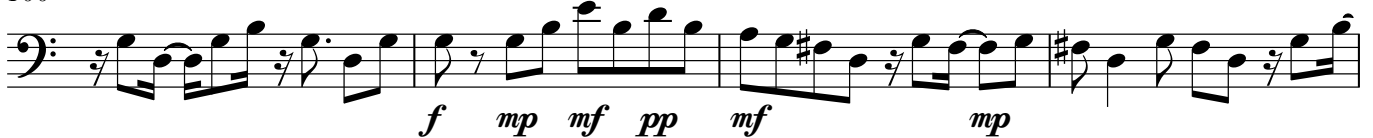
92



96



100



104



108



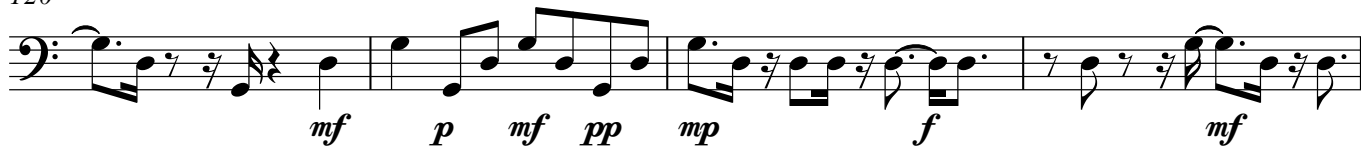
112



116



120



124



128



132



136



140



144



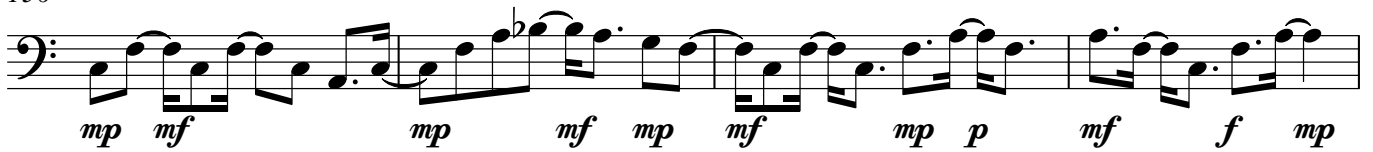
148



152



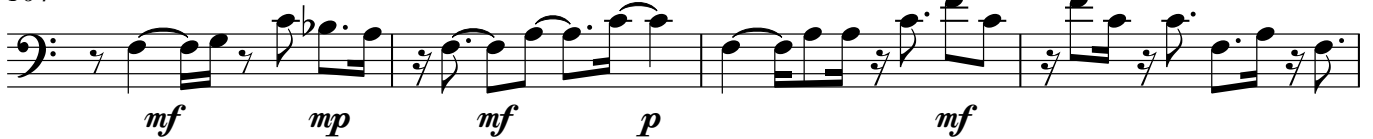
156



160



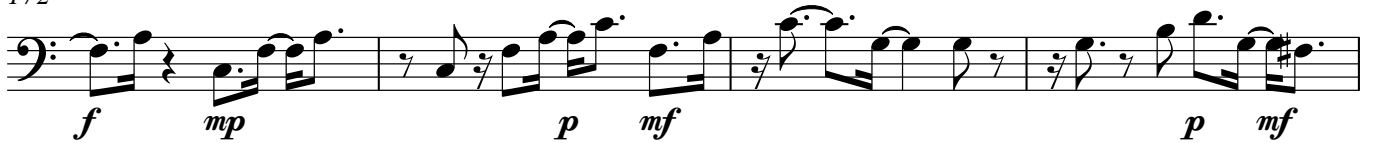
164



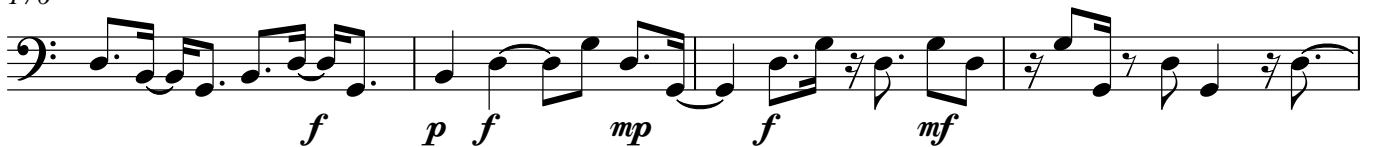
168



172



176



180



184



188



192



196



200



204



208



212



216



220



224



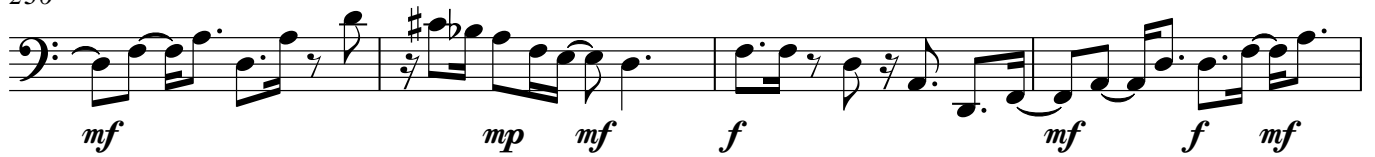
228



232



236



240



244



248



252



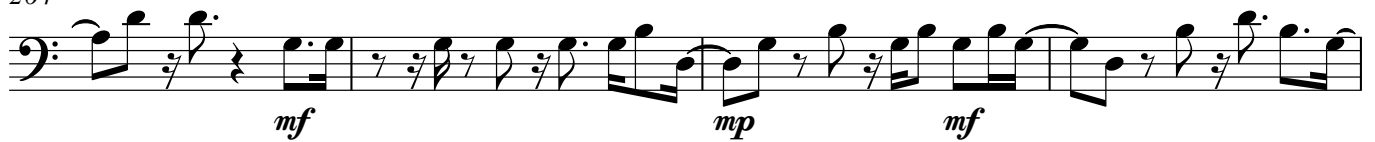
256



260



264



268



272



276



280



284



288



292



296



300



304



308



312



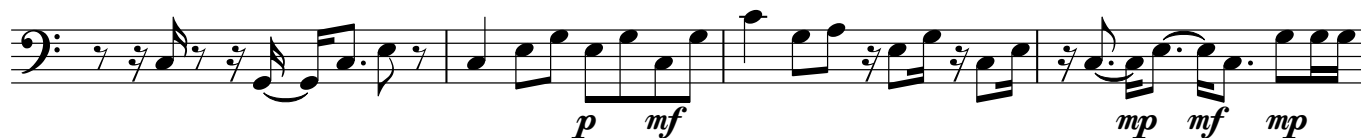
316



320



324



328



332



335



Double Bass

1989 Concerto for Clarinet

Stephen W. Beatty (1938)

♩ = 105

1 *mf* *f* *mp*

5 *p* *mf*

9 *mp* *mf* *mp*

13 *mf* *pp* *mp*

17 *p* *mp* *pp* *mp* *mf* *p*

21 *mp* *p* *mp* *p* *mp* *mf* *pp*

25 *mf* *mp* *mf* *mp*

29 *mf* *mp* *mf* *mp* *mf* *p*

33 *mp* *pp* *mf* *p* *mp* *pp*

37



41



45



49



53



57



61



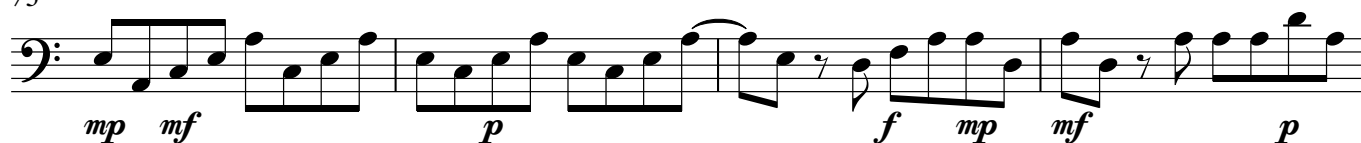
65



69



73



77



81



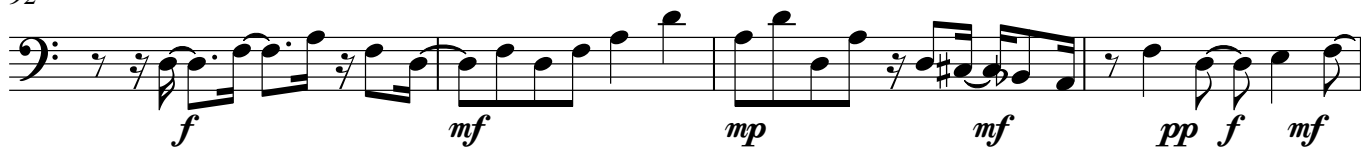
85



89



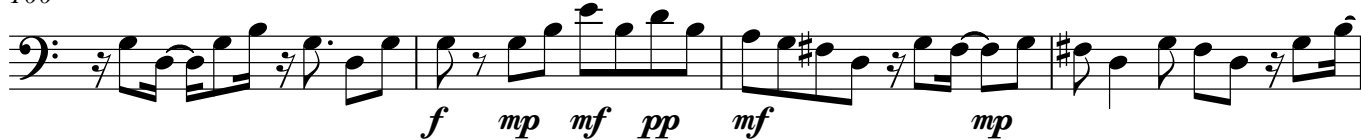
92



96



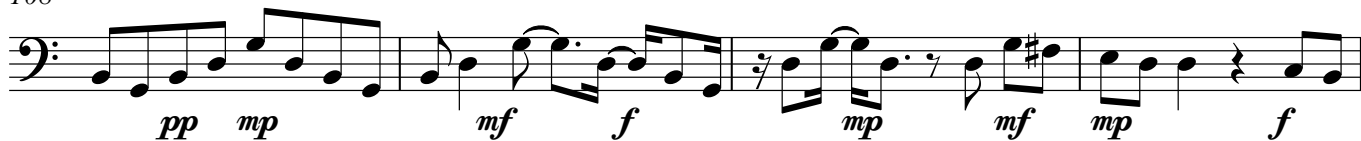
100



104



108



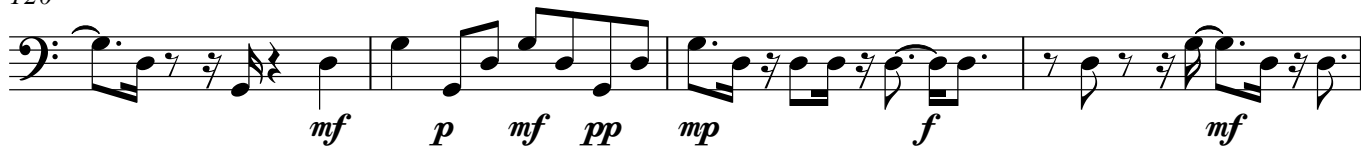
112



116



120



124



128



132



136



140



144



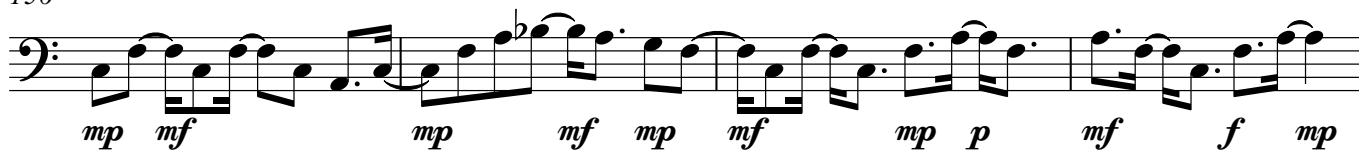
148



152



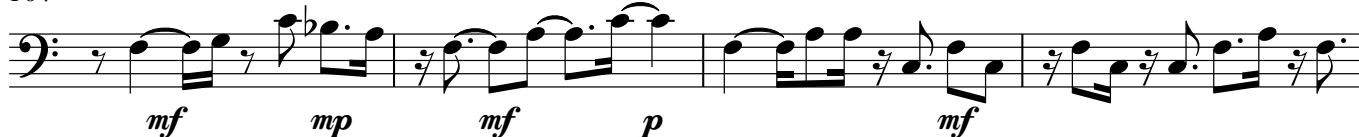
156



160



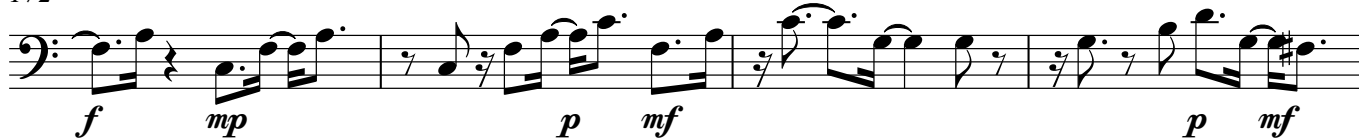
164



168



172



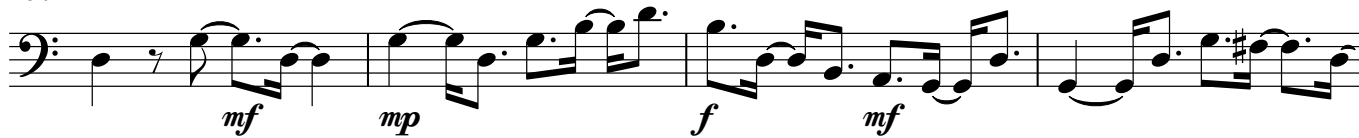
176



180



184



188



192



196



200



204



208



212



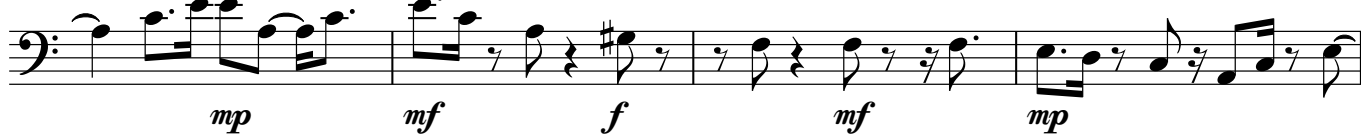
216



220



224



228



232



236



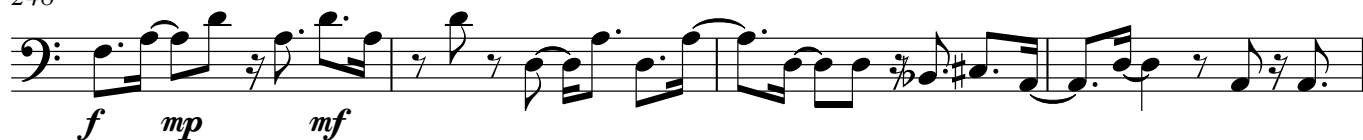
240



244



248



252



256



260



264



268



272



276



280



284



288



292



296



300



304



308



312



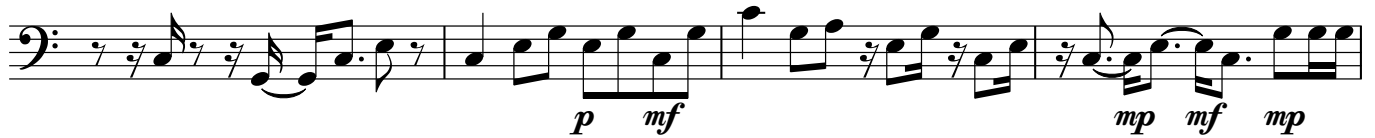
316



320



324



328



332



335

