

WITH YOU

Ballad

WORDS BY

WM RICHARD GOODALL

MUSIC BY

MARGARET KINGORE

5

CHICAGO, 59 DEARBORN ST.
LEO FEIST
PUBLISHER
LONDON, ENGL.
11 FELDMAN - 98 BERNERS ST. W.

FEIST BUILDING
134 WEST 37th ST.
NEW YORK
TORONTO, CAN.
WHALEY, ROYCE & CO.

Try this over on your Piano.

Sop. or Ten. in Bb.
Mez. Sop. or Bar. in Ab.
Alto or Bass in F.

TELL ME.

Words by GEO. TOTTEN SMITH.

Mez. Sop. or Bar.

Music by ROBERT A. KEISER.

Andante moderato.

The piano introduction is written in a 3/4 time signature with a key signature of two flats (Bb and Ab). It begins with a treble clef and a dynamic marking of *mf*. The melody is characterized by a series of eighth and sixteenth notes, often beamed together. The bass line provides a steady accompaniment with chords and single notes. The piece concludes with a *riten.* (ritardando) and *dim.* (diminuendo) marking.

1. There is a ques - tion in my heart, _____ If
2. When I am with you sweet - heart mine, _____ So

The vocal line is written in a treble clef with a dynamic marking of *p*. The piano accompaniment is in a bass clef with a dynamic marking of *p* and a *marcato.* (marked) tempo. The piano part features a steady eighth-note accompaniment in the right hand and a more active bass line in the left hand.

I the an - swer knew, _____ 'Twould to my life a joy im -
ma - ny things I'd say, _____ To tell my love I then in -

The vocal line continues in the treble clef. The piano accompaniment maintains the *marcato.* tempo and provides harmonic support for the vocal melody.

part, _____ As noth - ing else could do. _____ To
cline, _____ 'Tis hard to find the way. _____ My

The vocal line concludes in the treble clef. The piano accompaniment ends with a *rit.* (ritardando) marking. The piece concludes with a final chord in the piano part.

Price 50¢

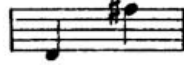
Copyright MCMII by Hugo V. Schlam.
Assigned MCMIII to Leo Feist 134 W. 37th St. New York.
English Copyright and Performing rights secured and reserved.

Complete copies may be had where you bought this.

Sop. or Ten. in A
Mez. Sop. or Bar. in G
Alto or Bass in E^b

WITH YOU.

Mez. Sop. or Bar.



WORDS BY
WM. RICHARD GOODALL.

MUSIC BY
MARGARET KINGORE.

Andante moderato.



con espressione.

1. The world seems fair, I've not a care, With
 2. Each moment there, a jewel rare, With

you, dear, with you. _____
 you, dear, with you. _____

Copyright MCMII by Hugo V. Schlam.
Assigned MCMIII to Leo Feist 134 W 27th St. New York.
English Copyright and Performing rights Secured and reserved.

Swift flies the hour in Cup - id's bow'r, With you, dear, with
Per - fum'd the air be - yond com - pare, With you, dear, with

you Your tres - ses gold, I fond - ly hold, Press'd
you An E - den just for you and me, Love's

rit. *a tempo.*

to my heart so true, One ra - dant dream, is
gar - den for us two, There would I dwell e -

mf

love su - preme, With you, dear, with you.
ter - nal - ly, With you, dear, with you.

Refrain.

Andante. (not too fast).

With you, dear, with you, — My sky is ev - er blue, — My

agitato. heart is fill'd, my soul is thrill'd, *tendresse.* With you, dear, with you — I

accel. cresc. *rit.* *a tempo*

love you, I do — In our world there's but two — Where

mf

con forza. I would dwell, bound by loves spell, *ten.* With you, dear, with you. —

rit. *mf*

Over 25,000 Copies Already in use

THE "FEIST" DANCE FOLIO

— FOR THE —

PIANO FORTE

The enormous sale which the "FEIST" DANCE FOLIO has, having sold over 25,000 copies in less than two months, is the best evidence that it has established itself firmly in the homes of the people, who have learned that it is not only a most popular dance album, but an acceptable piano solo folio as well. It contains almost 100 pages of favorite compositions by celebrated and popular writers. The pieces are all arranged as instrumental numbers, and the collection makes a superb edition, worth many times the popular price it is sold at. The "FEIST" DANCE ALBUM can be secured wherever music is sold. Price 75c. net. — Just the thing for "AT HOMES," "RECEPTIONS" etc.



"IN STARLIGHT"

by A. Lyndon Trahern and Rob't A. King

A beautiful semi-classic ballad especially adapted for an a. and b. or encore number. The music is by Mr. Rob't A. King, of "BEYOND THE GATES OF PARADISE" fame, who certainly had his musical muse with him when he wrote this song. There is a dearth of songs of this class for parlor and concert singing, and therefore it should be hailed as a welcome addition to the repertoire of every good singer.

"In Starlight" is published as a solo price 50c. a copy and as a vocal duet at 60c. a copy. "Buy it where you bought this."

In Starlight.

Words by A. LYNDON TRAHERN.

Music by ROBERT A. KING.

Andante amabile. *Composer of "Beyond the Gates of Paradise" "Golden Land of Peace" "If you Loved me," etc.*

Piano.

VOICE.

I will be wait-ing love in. star - light, — As we

amoroso e tranquillamente.

did in days gone by, — We will wan-der in the

moon-light, — Where no shadows cloud the sky.

mf poco rall. *ten.* *a tempo.*

Copyright MCMII. by Leo Feist; 86 W 25th St., N.Y.
English Copyright and performing rights secured and reserved.

THREE NEW MODERN CLASSICS

MERRY SHEPHERDS' LAY, Nocturne
by Julius Jonas

A "Romance Pastorale" in perfect rhythm, telling in sweetest melody the story of the shepherd and his flock. Medium Difficult. Price 50 cents.

CONSOLATION, Melody in G.
by David Klein

A sympathetic bit of melody and a dainty little classic for pupils who have reached the medium grade—smooth, flowing and sustained harmonies throughout. A gem for parlor and concert! A grand study in expression! Price 50 cents.

THE FAWN, Valse Du Salon
by Rob't A. King

A most brilliant and vivacious "Valse Caprice," for advanced players. A "Bravura" composition, and particularly adapted for school exhibitions, concerts and drawing room. Price 50 cents.

BE MERCIFUL TO ME

by STEPHEN ADAMS

There is very little more to be said. Mr. Adams' "Holy City" has gained such a world-wide reputation that it is needless to comment on its worthy successor. The melodies used are considered the BEST of his compositions, as they contain excerpts of "Nancy Lee," "The Pilgrim" and "Maid of the Mill." The lyric is by the noted author Chas. Noel Douglas. The song should

The Best of STEPHEN ADAMS' Compositions

BE MERCIFUL TO ME

Sacred Song

WORDS BY
Charles Noel Douglas

MUSIC

BY
STEPHEN ADAMS

Composer of "Holy City" etc

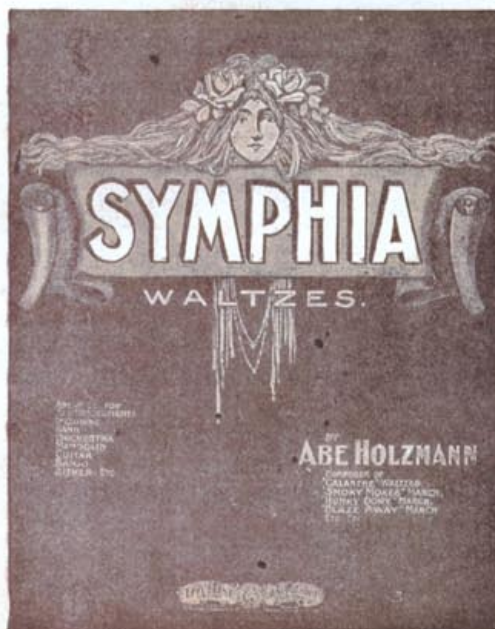
PIANO SOLO

ALSO ARRANGED FOR PIANO AND GUITAR, 27 OTHER BANDS, ORCHESTRA AND BANG

NEW YORK
PUBLISHED BY LEO FEIST, 86 W. 25th St.

Price Seventy-Five Cents

prove valuable to church singers for the reason that it is entirely non-sectarian and therefore can be used in churches of any denomination.



SYMPHIA!!!

Symphia, is the title of Abe Holzmann's new set of waltzes. Symphia is refreshing, fascinating, masterful, convincing and as full of vim and dash as his famous Calanthe waltzes.

Symphia is a newly coined word — Webster would define it to mean "meritorious, worthy, lasting."

Symphia to the minds of master leaders under whose critical and impartial judgment it has passed muster, is a waltz abounding in tuneful themes, which should prove its lasting quality and earn just popularity by its worthiness.

And—its cover page—a work of art!—simple art, attractive art,—But then, what's the use of saying more about it — one word tells the whole story—Symphia is simply Great; and in it, Holzmann has another winner.

PRICE 50 CENTS.