

Haydn Cappricio C, Mandolin

10

20

30

39

52

63

70

p

Handwritten musical score for Haydn's Capriccio C, Mandolin, showing measures 81 through 168. The score is written on a single staff in treble clef, with a key signature of one flat (B-flat). The notation includes various musical symbols such as chords, arpeggios, and dynamic markings.

Measures 81-92: Chords and arpeggios, marked *f* and *f2*. A circled *f* is written above measure 85.

Measures 93-106: Chords and arpeggios, marked *f2* and *f*. A circled *f* is written above measure 95.

Measures 107-119: Chords and arpeggios, marked *f* and *f2*. A circled *f* is written above measure 110.

Measures 120-131: Arpeggios, marked *p* and *f*. A circled *f* is written above measure 125.

Measures 132-142: Arpeggios, marked *p* and *f*. A circled *f* is written above measure 135.

Measures 143-150: Arpeggios, marked *p* and *f*. A circled *f* is written above measure 145.

Measures 151-158: Arpeggios, marked *p* and *f*. A circled *f* is written above measure 155.

Measures 159-168: Arpeggios, marked *p* and *f*. A circled *f* is written above measure 165.

Haydn Capriccio C, Mandolin

3



265

Exercise 265 is a single staff in treble clef with a key signature of one flat. The melody consists of eighth and quarter notes with various slurs and ties.

274

Handwritten musical notation for measure 274. The staff is in treble clef with a key signature of one flat (B-flat). The notation includes eighth and sixteenth notes, rests, and a fermata. There are some handwritten annotations above the staff, including a '2' and a squiggle.

282

f

292

Handwritten musical score for guitar, measures 292-297. The score is written on a single staff with a treble clef. The key signature has one flat (B-flat). The time signature is 4/4. The notation includes eighth and sixteenth notes, rests, and chords. There are handwritten annotations: a large 'f' (forte) under measure 294, and a handwritten 'f' with a slur over measures 295-297. The notes are written in black ink, and there are some red markings on the staff lines.

300

323

Exercise 323 is a 12-measure piece in 2/4 time. The melody is in treble clef, and the bass line is in bass clef. The key signature has one sharp (F#). The melody consists of eighth and sixteenth notes, while the bass line consists of chords. The piece ends with a double bar line.

338



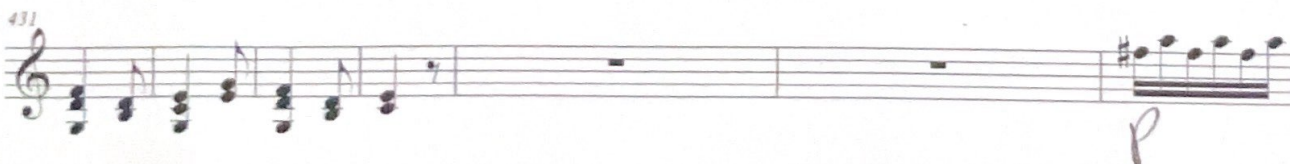
349



~~Assume~~ assume similar expectations as before, not marked in manuscript

Haydn Capriccio C, Mandolin

5



Haydn Capriccio C, Mandolin

