

Guitar

# 1876 Concerto for Guitar

Stephen W. Beatty (1938)

$\text{♩} = 105$

Measures 1-7:  $f$  (2),  $mf$  (3)

Measures 8-11:  $f$ ,  $mf$ ,  $8va$

Measures 12-17:  $pp$ ,  $p$ ,  $mf$ ,  $2$

Measures 18-21:  $f$ ,  $mp$ ,  $mf$ ,  $f$

Measures 22-25:  $mf$ ,  $f$ ,  $mf$ ,  $mp$ ,  $mf$

Measures 26-31:  $f$ ,  $8va$ ,  $mp$ ,  $2$

Measures 32-35:  $mf$ ,  $f$ ,  $mp$ ,  $mf$ ,  $8va$

Measures 36-41:  $3$ ,  $pp$ ,  $mf$

Measures 42-45:  $f$

45 *8va* *mf* *f* *mf* *8va*

49 (8) *f* *mf* *mp* *p* 2

55 *mf* *f* *mf* *8va*

58 (8) *f* *mf* 2 *8va* *mp*

63 (8) *mf* *f* *mf* *8va*

68 (8) *mp* *f* *ff* *mp* *mf* *f* *8va*

73 (8) *p* *ff* *mf* *f* *mp* *mf* *p* *8va*

77 (8) *mf* *mp* *mf* *mp* *mf*

81 *8va* *mp* *p* *mf*

86 *8va* *f* *pp* *mf*

89 (8) *mp* *mf* *mp* *f* *mf* *8va*

92 (8) *mp* *mf* *mp* *f* *mf* *8va*

96 (8) *mp* *mf* *p* *mp*

101 *8va* *f* *mf*

104 *8va* *f* *mf* *p* *mf*

108 *mp* *mf* *p* *mf* *mp* *pp* *mf* *mp*

112 *mf* *f* *mf* *mp* *mf*

115 *8va* *mp* *mf* *mp* *mf* *mp*

118 *pp* *mp* *8va* *mf*

122 (8) *p* *mp*

125

*mf mp mf f*

128

*mf mp mf* *8va*

131 (8)

*mp mf* *8va*

136 *8va*

*mp f mf mp mf* 2 3

144 *8va*

*mp mf mp*

147 (8)

*f mp*

150 *8va*

*mf f mf*

153 (8)

*mp mf mp mf* *8va*

158 (8)

*mp pp p*

162 (8)

*mp p mf f mf*

166 8<sup>va</sup>-----

*f mp mf*

169 8<sup>va</sup>-----

*p mf mp mf mp mf pp*

173 (8) 8<sup>va</sup>-----

*mp mf mp mf*

179 (8)

*f mf mp mf*

182 (8)

*mp pp mp*

187 8<sup>va</sup>-----

*pp mp p pp*

191 8<sup>va</sup>-----

*mf f mp mf pp*

194 8<sup>va</sup>-----

*f mf mp*

199 *mf* *p* *f* *8va*

203 (8) *mp* *mf* *mp* *mf* *pp*

207 *mp* *8va* 5

215 *f* *mf* *pp* *mp* *8va*

218 *f* *mf* *mp* *p* *mp* *p* *mf*

221 *mp* *8va* *mf*

226 *mp* *8va* 2 *mf*

231 *f* *mf* *8va*

234 (8) *mp* *pp* *mp* *p* *mf* *8va*

238 (8) *p* *mf* *p* *mp* *8va*

243 (8)  $8^{va}$

*mf* *f* *mf*

249  $8^{va}$

*pp mp mf f mf f mf f mp mf*

253 (8)

*mp f mf mp f pp mp*

257  $8^{va}$   $8^{va}$

*mf mp*

263  $8^{va}$   $8^{va}$

*f mf p mf*

266 (8)

*mp f mp mf mp f*

270  $8^{va}$

*ppp mf mp*

274

*f mp f mp*

278  $8^{va}$

*mf mf f mp f mf p mf mp pp mf*

282  $8^{va}$

*ff mp pp mp pp mf*

286 (8) 8va-----

*mp p mp p mp mf p* *mf*

291 (8) 8va-----

*mp ppp pp* *mf mp*

298 (8) 8va-----

*mf mp ff f* *mf*

301 (8) 8va-----

*f mf mp* *4*

308 8va-----

*mf pp mf mp p mp* *8va*

312 8va-----

*mf*

314 (8)

*p mf pp mp mf*



Violin

# 1876 Concerto for Guitar

Stephen W. Beatty (1938)

♩ = 105

Violin score for the 1876 Concerto for Guitar by Stephen W. Beatty (1938). The score is in 4/4 time with a tempo of 105 beats per minute. It consists of nine staves of music, each starting with a measure number (1, 5, 9, 16, 19, 25, 29, 33, 37). The music features various dynamic markings including *f*, *mf*, *ff*, *mp*, and *f*. The notation includes eighth and sixteenth notes, rests, and slurs.

42

*mf f mf*

47

*ff mp ff f mf ff mf*

51

*f mp p*

56

*f mf*

62

*f mf*

65

*f*

69

*mf mp mf*

76

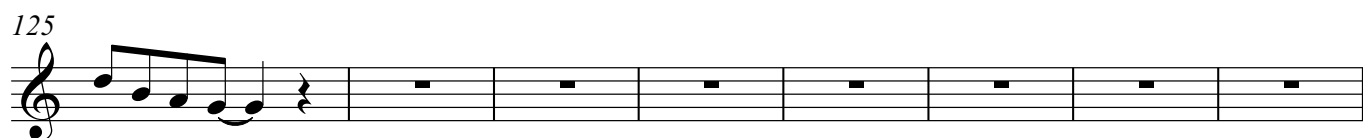
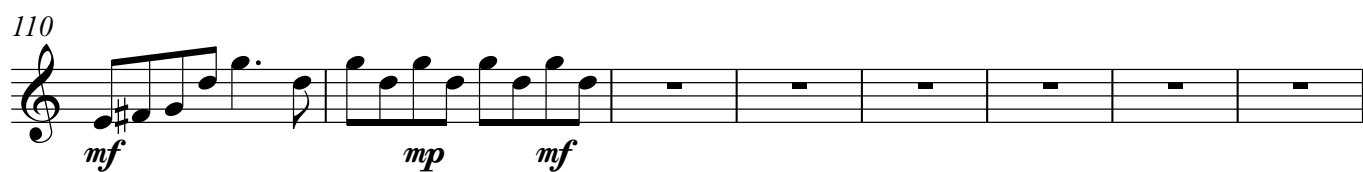
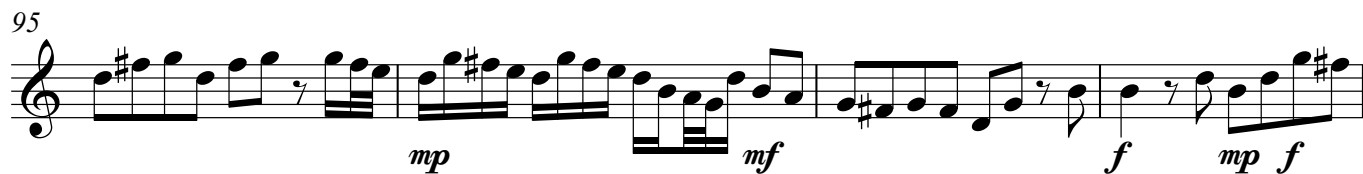
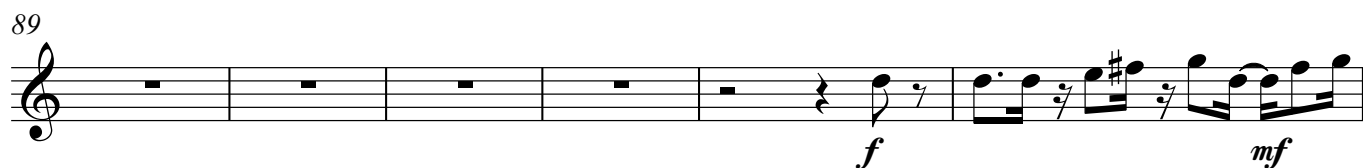
*f mf f mf f mf*

80

*f mf*

83

*mp mf mp f mf p pp mp*



133

*mf* *p* *f*

137

*mf* *f* *mf* *p* *f* *mf* *f*

141

*mf* *p* 9

153

*f* *ff* *f* *mf* *f* *mf*

157

*mp* *ff* *f* *mf*

160

*f* *mf*

163

8 *mp* *ff* *mp* *mf*

174

*p* *mp* *ff* *mf* *f* *mf* *mp*

178

5 *mp* *mf* *pp* *p* *mf* *p* *mf* *f*

186

*mf* *f* *mp* *mf* *f* *mf*

189 *f mp f mf* **4**

196 *f mf f*

199 *mf p* **4**

206 *f*

209 *mf ff f*

212 *mf f mf f mf*

216 **5** *f p f mp*

224 *mf f mp mf f mp*

228 *mf mp mf p pp mf* **2**

236

*f* *mp* *mf*

240

*f*

243

*ff* *mf* *mp* *mf* *f*

246

*mf* *mp* **2**

255

*mf* *f* *mf*

258

*f* *mf* *f*

261

*mp* *mf* *f* *mf* *f*

266

**2** *mf* *mp*

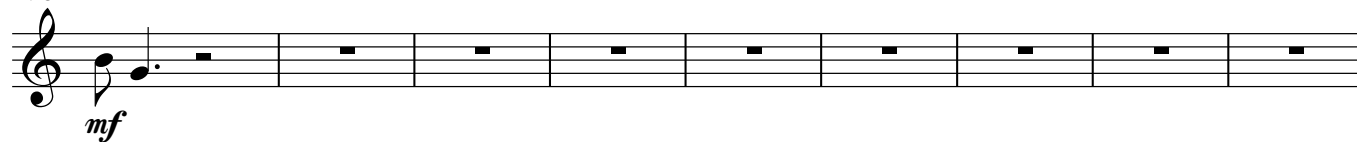
271

*f* *mf* *mp* *f* *mp* *f*

274

*f* *mp* *f* *mp*

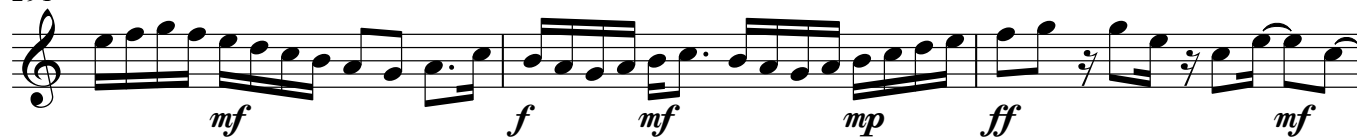
278



287



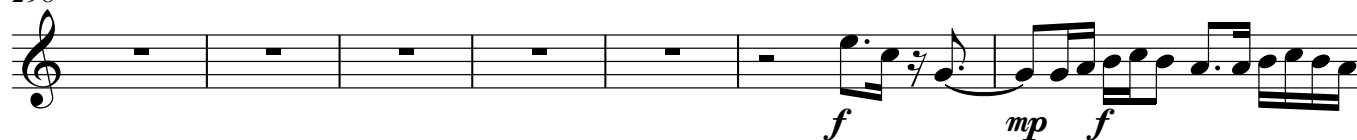
291



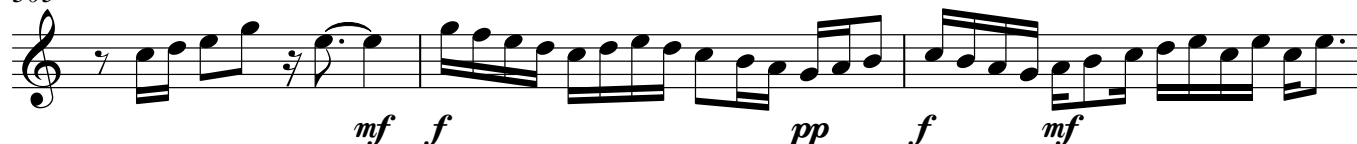
294



298



305



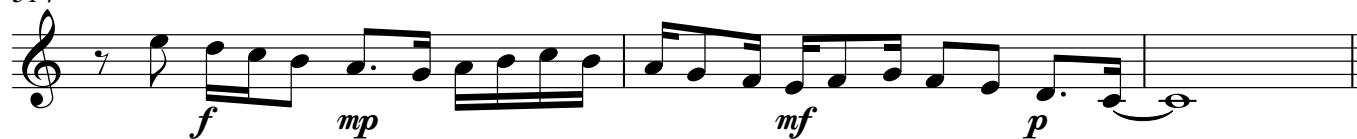
308



311



314



Solo Violin

# 1876 Concerto for Guitar

Stephen W. Beatty (1938)

$\text{♩} = 105$

2 *f* *mf*

6 *mf* 5

14 *f* *ff* *f* *ff* *8va*

18 (8) *f* *ff* *f* *mf* *f* *mf* *mp* 4

25 *8va* *f* *ff* *f*

28 (8) *mf*

31 *mp* *f* *mp*

34 *mf* *mp* *f* *mf* *8va*

37 (8) *f*

39 *mp* 4



45 *mf* *f* *mf*

49 *f* *mf* *mp* *p* 2

55 *mf* *f* *mf*

58 *f* *mf* *f* *mf*

62 *f* *mf*

65 *f*

68 *mf* *mp* *mf* 5

76 *f* *mf* *f* *mf*

79 *f* *mf* *f*

82 *mf* *mp* *mf* *mp* *f*

85 *mf* *p* *pp* *mp* 7 *8va* *f* *mf*

95 (8)

*mp* *mf*

98 (8)

*f* *mp* *f*

105 *8va*

*ff* *mf* *ff* *f* *p* *mp* *mf* *f*

109 (8)

*mf* *mp* *mf*

118 *8va*

*ff* *f* *mf* *p* *f* *mf* *f*

122 *8va*

*mf* *ff* *mf* *f* *mf* *mp*

125 *8va*

*mf* *p* *f*

135 (8)

*mf* *f* *mf* *p*

138

*f* *mf* *f*

141

*f*

143

*mf* *p*

## Solo Violin

153 *8va* *f* *ff* *f* *mf* *f* *mf*

157 *8va* *mp* *ff* *f* *mf*

160 (8) *f* *mf* *8va*

163 *8* *ff* *mp* *mf*

174 *p* *mp* *ff* *mf* *f* *mf*

177 *5* *mp* *mp* *mf* *pp* *p* *mf*

185 *p* *mf* *f* *mf* *f* *mp*

188 *mf* *f* *mf* *f* *mp*

191 *8va* *mf* *f* *mp* *mf* *pp*

194 *f* *mf* *f* *mf*

198 *f* *mf* *p*

202 **5**  
*mp*

210  
*ff* *f* *mf*

213 *8va*-----  
*f* *mf* *f* *mf* *f* *mf*

216 (8)-----  
*pp* *mp* *f* *mf*

219  
*mp* *p* *mp* *p* *mf* *mp*

222  
*f* *p* *f* *mp* *mf*

225 *8va*-----  
*f* *mp* *mf* *f* *mp* *mf* *mp*

229 **7**  
*mf* *p* *pp* *mf* *mf*

239  
*p* *mf*

242 **11**  
*p* *mp* *mf*

## Solo Violin

255 *8va*  
*mf* *f* *mf*

258 *f* *mf* *f*

261 *mp* *mf* *f* *mf* *f*

265 *8va*  
*p* *mf* *mp* *f* *mp*

268 (8) *8va*  
*mf* *mp* *f* *mf* *mp*

272 14 *ff* *f*

289 2 *8va*  
*mp* *mf* *f* *ff* *mf*

294 (8) *f* *mp* *mf*

297 (8) *8va* 7 *mf* *f* *pp*

307 (8) 2 *f* *mf* *p* *mp*

312 *8va*  
*mf*

(8)-----|

Solo Violin

7

314

Musical score for Solo Violin, measures 314-318. The score is written on a single staff with a treble clef. Measure 314 begins with a treble clef and a key signature of one sharp (F#). The melody consists of eighth and sixteenth notes. Measure 315 contains a repeat sign. Measure 316 starts with a dynamic marking of *p* (piano). Measure 317 has a dynamic marking of *mf* (mezzo-forte). Measure 318 has a dynamic marking of *pp* (pianissimo). Measure 319 has a dynamic marking of *mp* (mezzo-piano). Measure 320 has a dynamic marking of *mf* (mezzo-forte) and ends with a double bar line.

Violoncello

# 1876 Concerto for Guitar

Stephen W. Beatty (1938)

♩ = 105



4



7



10



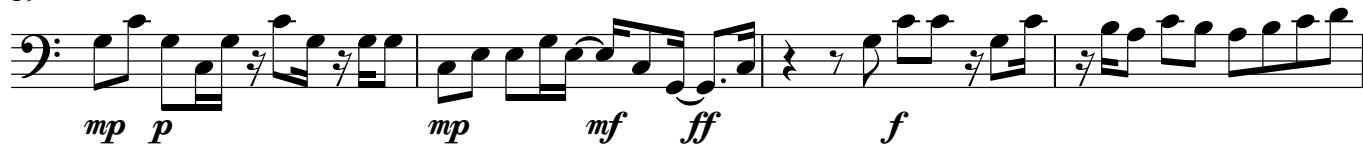
13



16



19



23



26



30



37



40



43



47



50



54



57



60



64





67



70



74



77



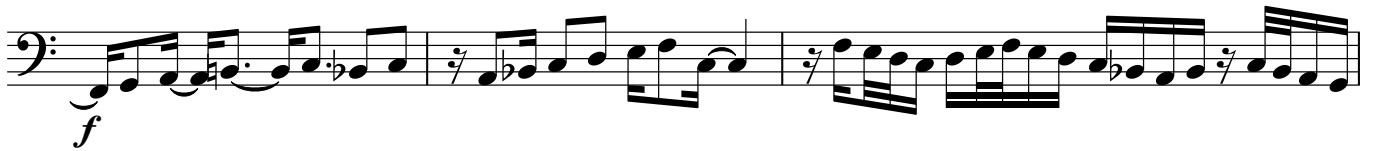
80



83



86



89



92



96



100



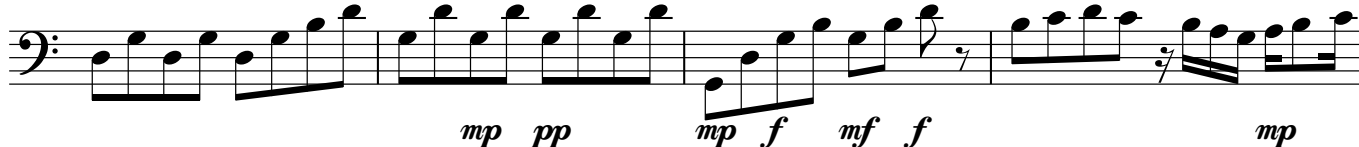
103



106



110



114



117



121



124



128



131



135



139



143



147



151



154



158



161



164



167



170



174



178



181



185



189



193



197



201



204



## Violoncello

7

208 *mf mp mf f mp*

211 *f mf mp*

215 *mf ff mp mf f*

219 *mp p mp mf*

222 *f mf f*

226 *mf f mp mf*

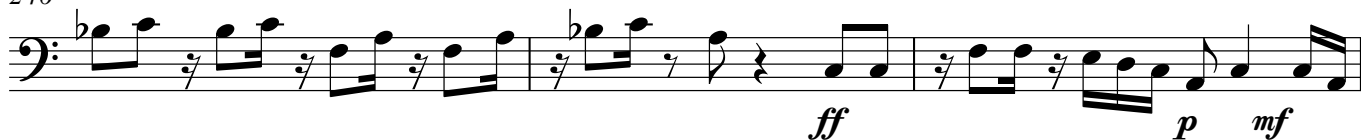
230 *f mf f mf*

234 *f mp f mf mp mf*

238 *f mp mf f mf*

242 *mp mf mp*

246



249



253



257



260



263



266



269



273



277



280



283



286



290



294



298



301 (8)



304



308



312



315

