

Flute 2

Concerto stilizzato

paraphrase on a motif by Brahms

PARTE PRIMA: “CADENZA”

Tamás Beischer-Matyó

Adagio ♩ = 60

Cadenza

22

25

tr

ppp

ff

ff

30

poco rall. Poco sostenuto

ff

ff

6/4

PARTE SECONDA: “FORMA-SONATA”

Allegro con brio ♩ = 180 (♩. = 60)

Allegro con brio ♩ = 180 (♩. = 60)

Viol. I *ff*

Viol. II *p*

Bsn. I *mf*

Bsn. II *f*

35 40 50

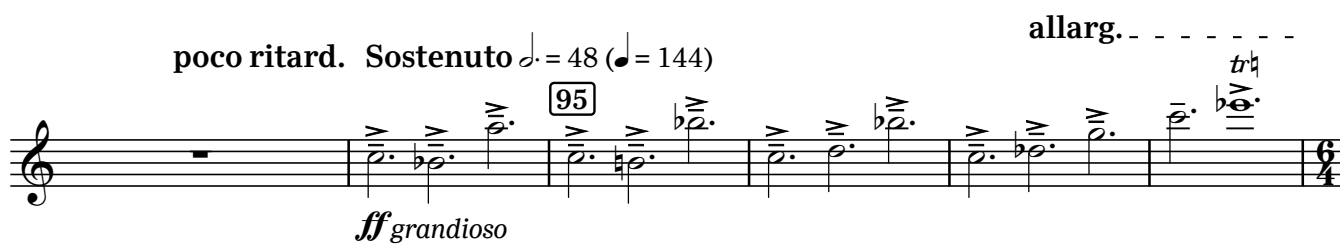
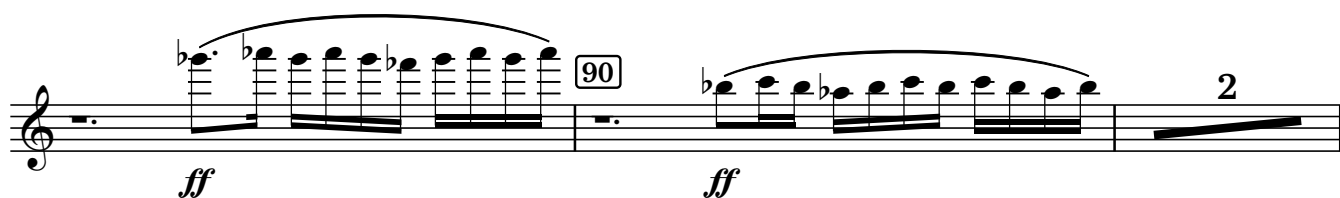
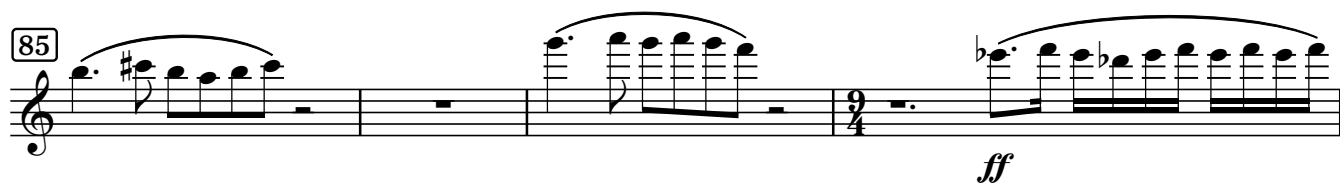
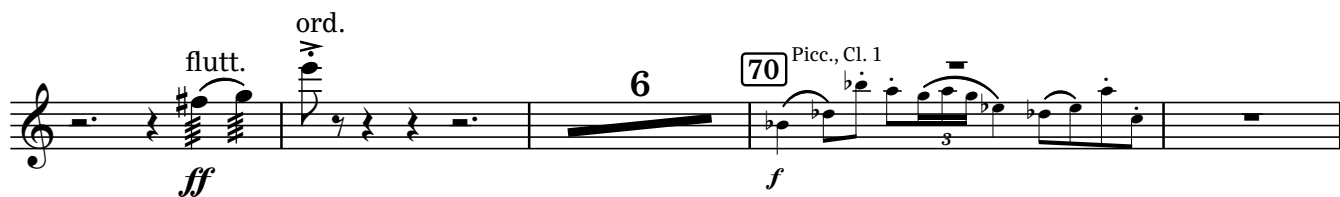
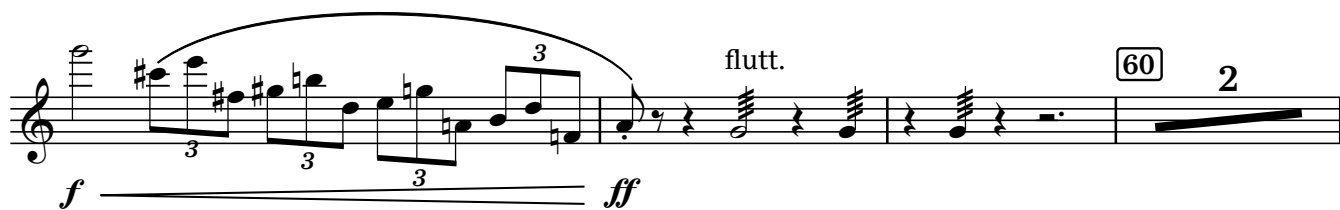
tr

3

Copyright Tamás Beischer-Matyó, 1996

www.beischermatyo.hu/concerto_stilizzato

This work is licensed under the Creative Commons Attribution-NonCommercial-NoDerivatives 4.0 International License. To view a copy of this license, visit www.creativecommons.org/licenses/by-nc-nd/4.0/



a tempo $\text{♩} = 60$ ($\text{♩} = 180$)

100 S. pno. Hp.

105 poco ritard. a tempo

mf *pp* *ff*

poco ritard. a tempo

110 *f* *espressivo*

115 *tr* 5 2 125

130 8 Picc., Vln. *f* *espress.* *fff*

molto rall. a tempo

pp *ff* 135 8

Ob. 1., C. a., Cl., B. cl., Bsn., D. bsn. *f* 145 *f*

rall. Meno allegro $\text{♩} = 120$

10 Fl. 1

(senza rall.) accel. . . al $\text{♩} = 180$ (a tempo)

160 *p* 165 Ob. 1., Vla. *mp*

170 *mf* *f* *ff*

175

180

PARTE TERZA: "LIED"

185 subito Adagio molto $\text{♩} = 60$ ($\text{♩} = \text{♩}$) allargando 205

a tempo 210

molto rall. più adagio e molto flessibile $\text{♩} = 48$ poco a poco allarg. . . . 220

PARTE QUARTA: "RONDÒ"

. . . a tempo ($\text{♩} = 48$) rall. Allegro vivace $\text{♩} = 180$ ($\text{♩} = 90$) 225

B. cl. *p marcato*

Measures 228-232. Measure 228: Bass clef, 2/4 time, notes G2, A2, B2, C3. Measure 229: Bass clef, 2/4 time, notes D3, E3, F3, G3. Measure 230: Bass clef, 2/4 time, notes A3, B3, C4, D4. Measure 231: Bass clef, 2/4 time, notes E4, F4, G4, A4. Measure 232: Bass clef, 2/4 time, notes B4, C5, D5, E5. Dynamics: *ff* (228), *ff* (229), *ff* (230), *ff* (231), *f* (232). Rehearsal mark 230 is at the start of measure 230.

Measures 233-238. Measure 233: Treble clef, 2/4 time, notes G4, A4, B4, C5. Measure 234: Treble clef, 2/4 time, notes D5, E5, F5, G5. Measure 235: Treble clef, 2/4 time, notes A5, B5, C6, D6. Measure 236: Treble clef, 2/4 time, notes E6, F6, G6, A6. Measure 237: Treble clef, 2/4 time, notes B6, C7, D7, E7. Measure 238: Treble clef, 2/4 time, notes F7, G7, A7, B7. Dynamics: *f* (233), *f* (234), *f* (235), *f* (236), *f* (237), *f* (238). Rehearsal mark 235 is at the start of measure 235.

Measures 239-244. Measure 239: Treble clef, 2/4 time, notes G4, A4, B4, C5. Measure 240: Treble clef, 2/4 time, notes D5, E5, F5, G5. Measure 241: Treble clef, 2/4 time, notes A5, B5, C6, D6. Measure 242: Treble clef, 2/4 time, notes E6, F6, G6, A6. Measure 243: Treble clef, 2/4 time, notes B6, C7, D7, E7. Measure 244: Treble clef, 2/4 time, notes F7, G7, A7, B7. Dynamics: *f* (239), *f* (240), *f* (241), *f* (242), *f* (243), *f* (244). Rehearsal mark 245 is at the start of measure 245.

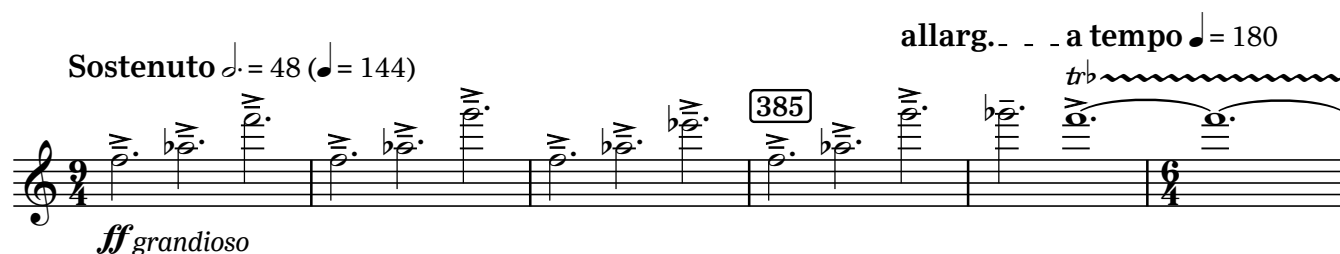
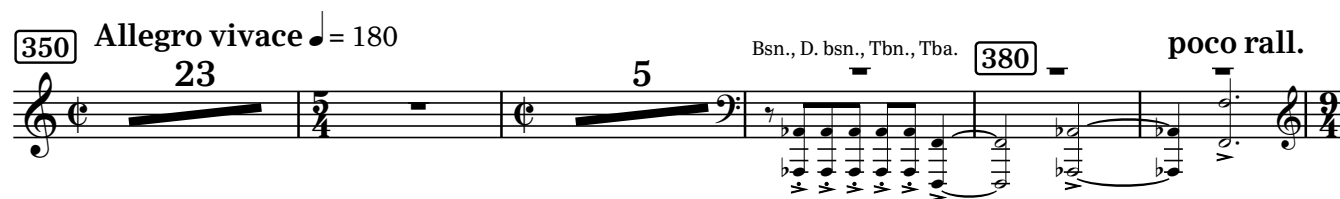
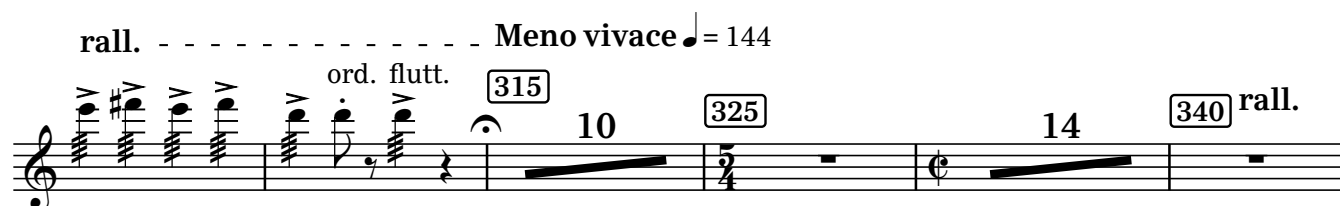
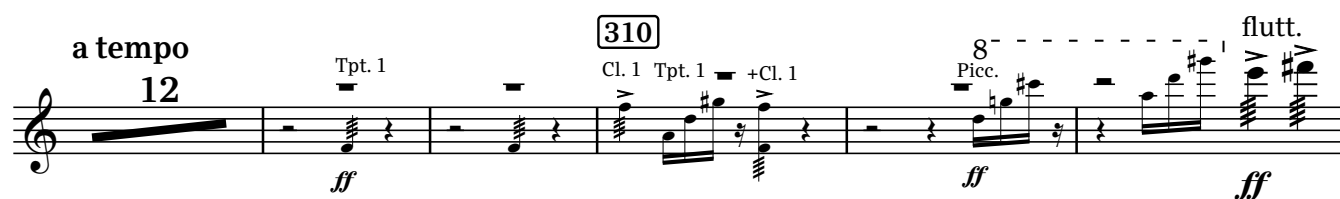
Measures 245-254. Measure 245: Treble clef, 2/4 time, notes G4, A4, B4, C5. Measure 246: Treble clef, 2/4 time, notes D5, E5, F5, G5. Measure 247: Treble clef, 2/4 time, notes A5, B5, C6, D6. Measure 248: Treble clef, 2/4 time, notes E6, F6, G6, A6. Measure 249: Treble clef, 2/4 time, notes B6, C7, D7, E7. Measure 250: Treble clef, 2/4 time, notes F7, G7, A7, B7. Dynamics: *f* (245), *f* (246), *f* (247), *f* (248), *f* (249), *f* (250). Rehearsal mark 250 is at the start of measure 250.

Measures 255-264. Measure 255: Treble clef, 2/4 time, notes G4, A4, B4, C5. Measure 256: Treble clef, 2/4 time, notes D5, E5, F5, G5. Measure 257: Treble clef, 2/4 time, notes A5, B5, C6, D6. Measure 258: Treble clef, 2/4 time, notes E6, F6, G6, A6. Measure 259: Treble clef, 2/4 time, notes B6, C7, D7, E7. Measure 260: Treble clef, 2/4 time, notes F7, G7, A7, B7. Dynamics: *f* (255), *f* (256), *f* (257), *f* (258), *f* (259), *f* (260). Rehearsal mark 255 is at the start of measure 255.

Measures 265-274. Measure 265: Treble clef, 2/4 time, notes G4, A4, B4, C5. Measure 266: Treble clef, 2/4 time, notes D5, E5, F5, G5. Measure 267: Treble clef, 2/4 time, notes A5, B5, C6, D6. Measure 268: Treble clef, 2/4 time, notes E6, F6, G6, A6. Measure 269: Treble clef, 2/4 time, notes B6, C7, D7, E7. Measure 270: Treble clef, 2/4 time, notes F7, G7, A7, B7. Dynamics: *f* (265), *f* (266), *f* (267), *f* (268), *f* (269), *f* (270). Rehearsal mark 265 is at the start of measure 265.

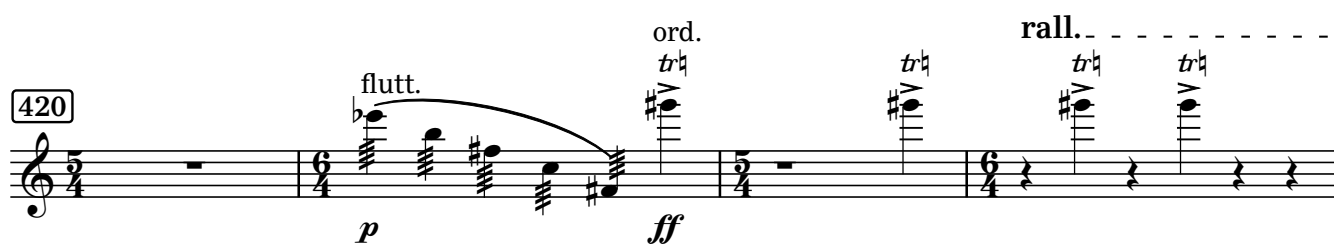
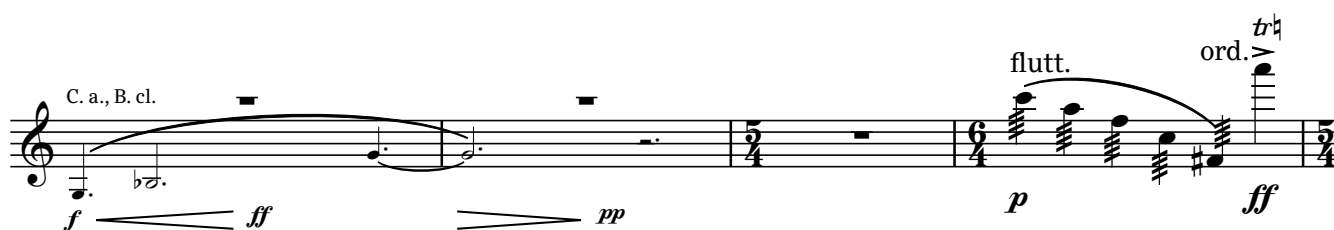
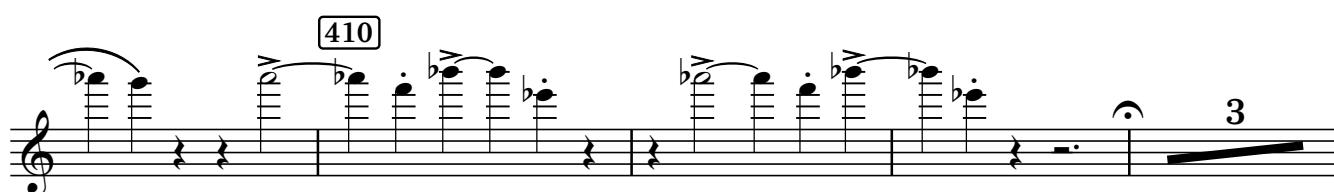
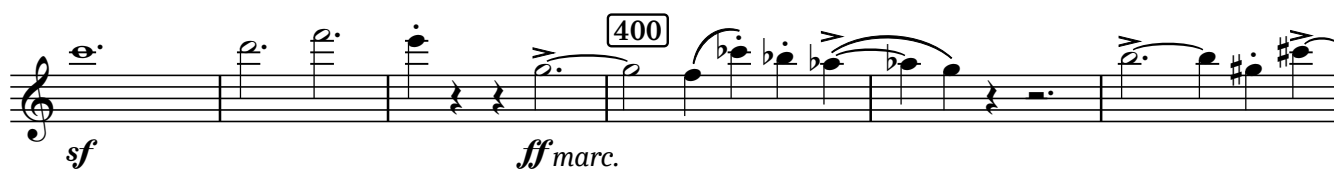
Measures 275-284. Measure 275: Treble clef, 2/4 time, notes G4, A4, B4, C5. Measure 276: Treble clef, 2/4 time, notes D5, E5, F5, G5. Measure 277: Treble clef, 2/4 time, notes A5, B5, C6, D6. Measure 278: Treble clef, 2/4 time, notes E6, F6, G6, A6. Measure 279: Treble clef, 2/4 time, notes B6, C7, D7, E7. Measure 280: Treble clef, 2/4 time, notes F7, G7, A7, B7. Dynamics: *f* (275), *f* (276), *f* (277), *f* (278), *f* (279), *f* (280). Rehearsal mark 270 is at the start of measure 270.

Measures 285-294. Measure 285: Treble clef, 2/4 time, notes G4, A4, B4, C5. Measure 286: Treble clef, 2/4 time, notes D5, E5, F5, G5. Measure 287: Treble clef, 2/4 time, notes A5, B5, C6, D6. Measure 288: Treble clef, 2/4 time, notes E6, F6, G6, A6. Measure 289: Treble clef, 2/4 time, notes B6, C7, D7, E7. Measure 290: Treble clef, 2/4 time, notes F7, G7, A7, B7. Dynamics: *f* (285), *f* (286), *f* (287), *f* (288), *f* (289), *f* (290). Rehearsal mark 275 is at the start of measure 275.



PARTE QUINTA: "CONCLUSIONE"





Poco sostenuto

a tempo, ma poco agitato



rall. molto

a tempo, molto pomposo

