

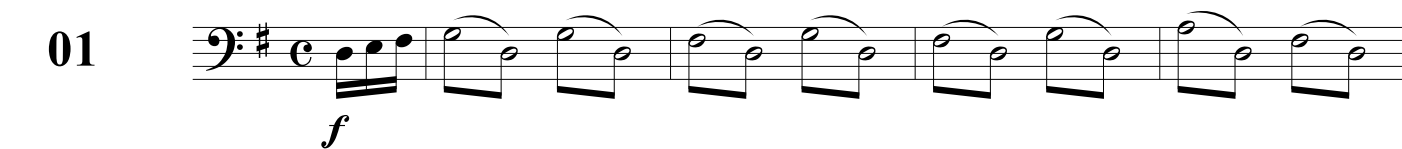
## Te Deum Brasil (alternado)

Op. 65

Arranjo de Justino da Conceição

Allegro

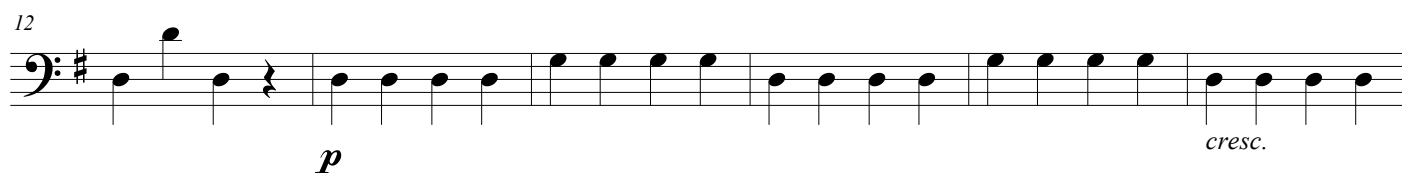
01



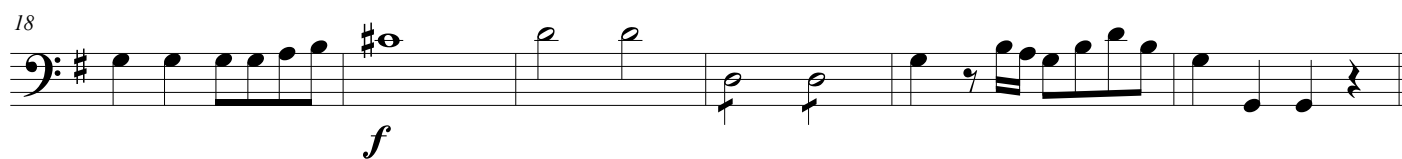
6



12



18

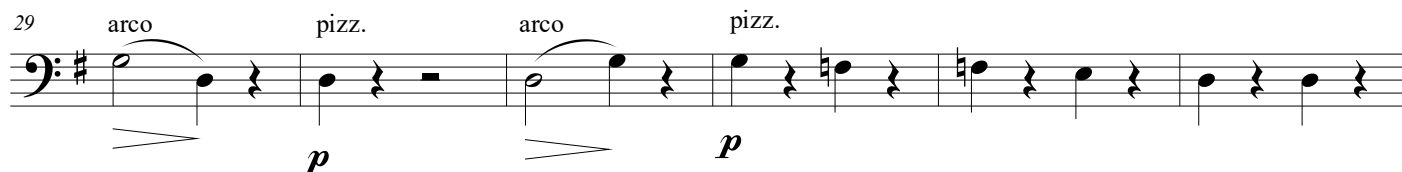


Allegro

02



29



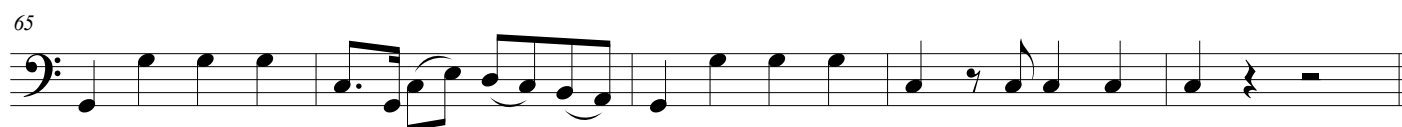
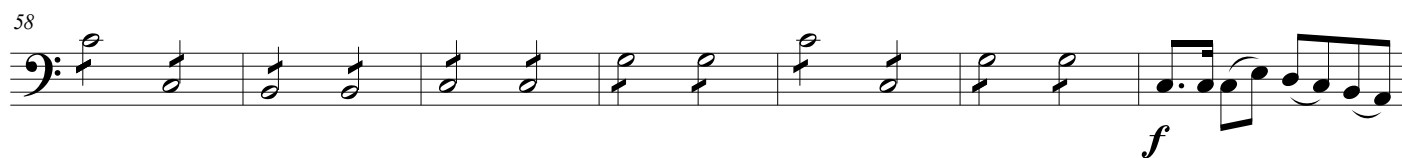
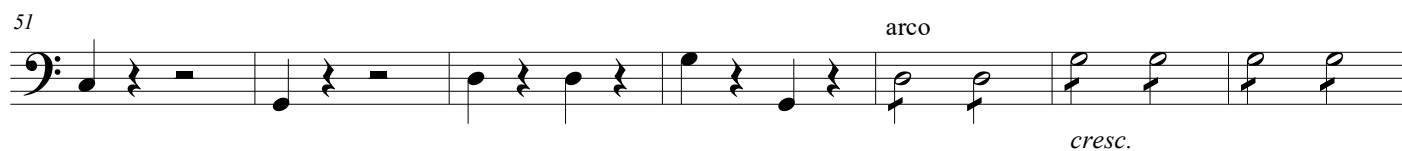
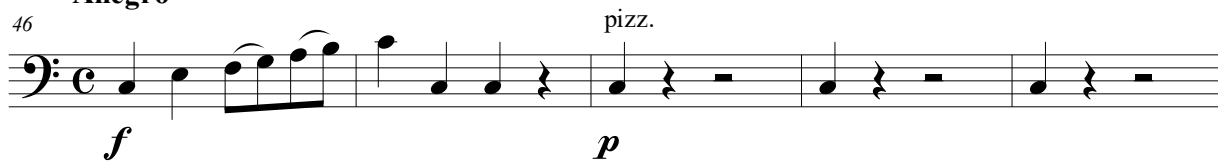
35



41



## 03 Allegro



## 04 Allegro



## 05

05

88

pizz.

*mf*

*p*

93

arco

99

*espress.*

104

pizz.

arco

109

*rit.*

*f*

*f*

Allegro

06

115

*f*

*mf*

120

*f*

*mf*

*f*

*mf*

126

*animato*

131

*cresc.*

*f*

## Allegro moderato

07 <sup>140</sup>

*p*

<sup>147</sup>

*cresc. f p cresc. f*

<sup>155</sup>

## Allegro

08 <sup>159</sup>

*f*

<sup>164</sup>

<sup>170</sup>

<sup>175</sup>

*mf*

<sup>181</sup>

*cresc. f*

## Andante levado

09



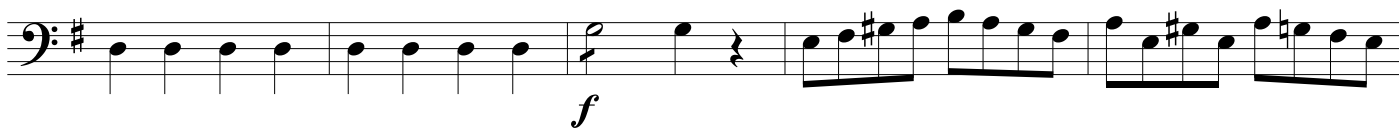
## Allegro

257

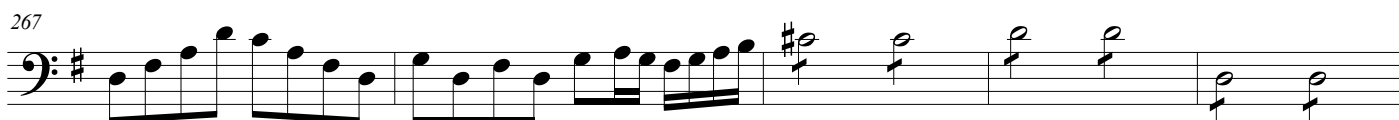
11



262



267



272



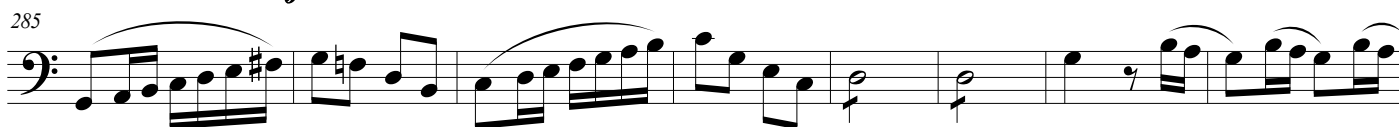
## Allegro

278

12



285



293



300



308



317



**13** *Andante*

328 *pizz.*

*p*

334 *arco* *rall.*

341 *a tempo*

*p*

348 *cresc.* *mf* *p*

356 *mf* *f*

**14** *Andante*

363 *p* *cresc.*

368 *dim.*

**Brilhante**

374 *f* *p* *cresc.* *f*

381 *p* *cresc.*

387 *f* *p*

392

396 *f* *p*

401 *f* *p* *f*

406

411

415 *p* *cresc.*

421 *f*

427

The image displays a musical score for a piece titled "Te Deum Brasil (alternado)". The score is written in bass clef with a key signature of one flat (B-flat). It consists of nine staves of music, each beginning with a measure number. The first staff (387) starts with a forte (*f*) dynamic and a half note with an accent (>), followed by a piano (*p*) section. The second staff (392) continues the piano section. The third staff (396) features a forte (*f*) section followed by a piano (*p*) section. The fourth staff (401) has a forte (*f*) section, a piano (*p*) section, and another forte (*f*) section. The fifth staff (406) continues the piano section. The sixth staff (411) continues the piano section. The seventh staff (415) starts with a piano (*p*) section and a crescendo (*cresc.*) marking. The eighth staff (421) features a forte (*f*) section. The ninth staff (427) concludes the piece with a final measure. The dynamics *f* (forte) and *p* (piano) are used throughout to indicate volume changes. The crescendo marking is used to indicate a gradual increase in volume.