

Piano 2

String Quartet

arranged for two pianos four hands

J. Hummel, Op.30 No. 2

Allegro con brio

8

16

24

29

f *p* *sf* *f* *p*

String Quartet - 2

35

40

46

53

59

66

String Quartet - 3

70

76

81

86

92

98

String Quartet - 4

101

p

107

113

f

118

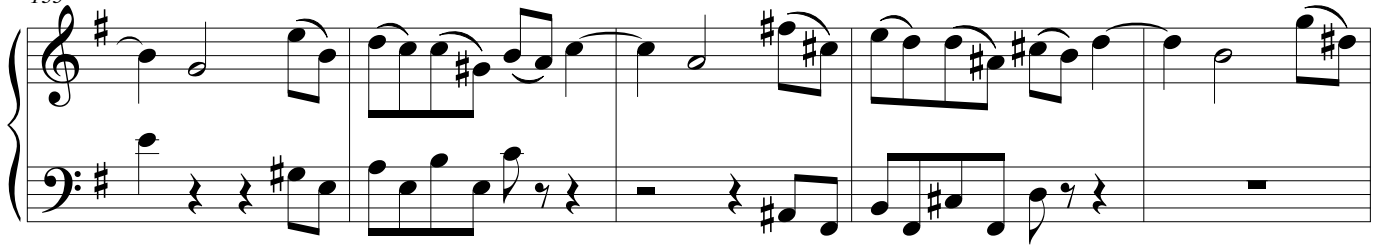
p *f* *p*

124

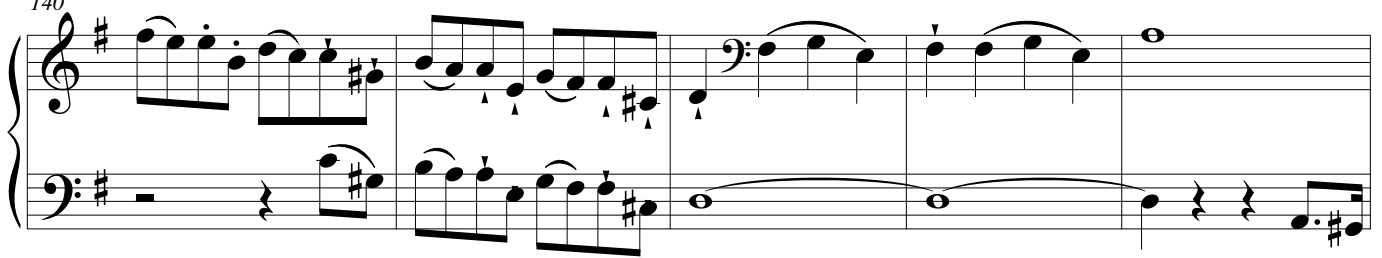
130

String Quartet - 5

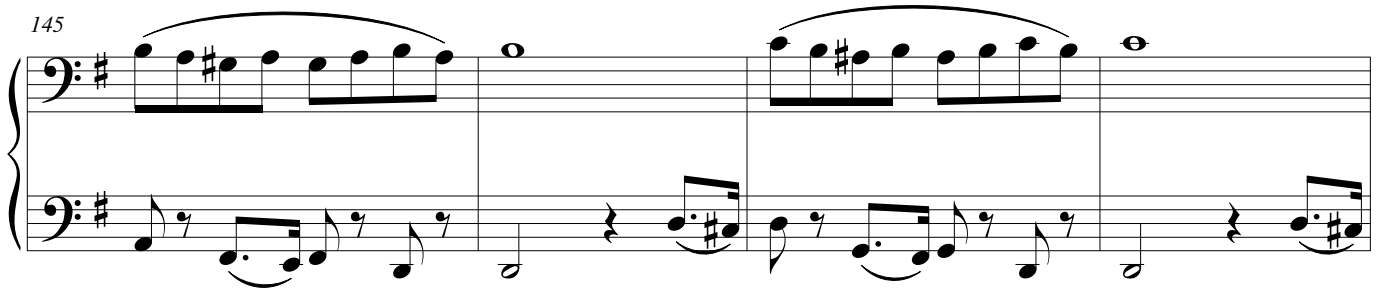
135



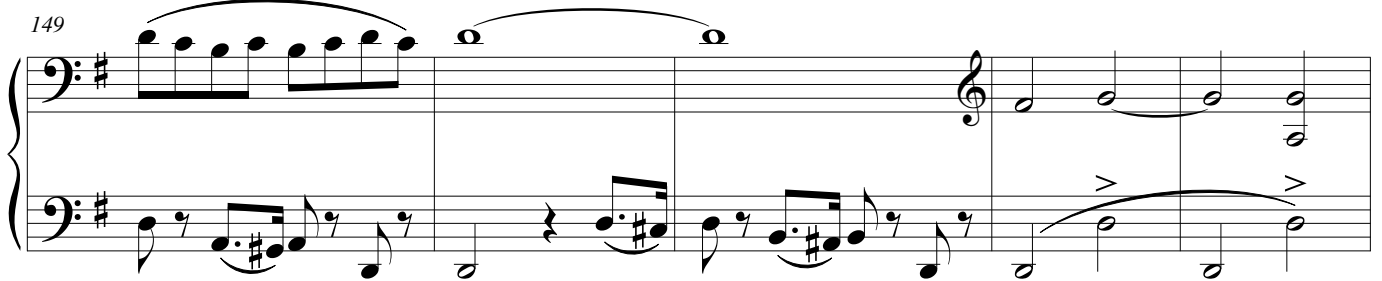
140



145



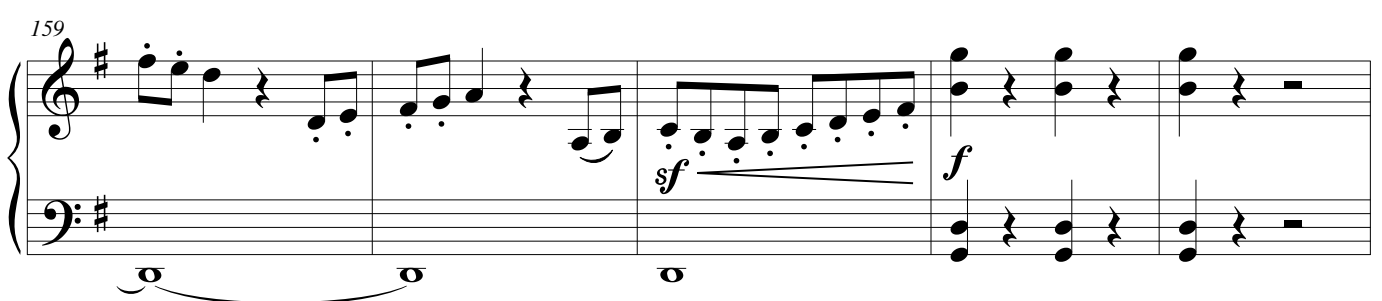
149



154



159



String Quartet - 6

164

164

p *f* *p*

172

172

sf

178

178

184

184

sf *f*

190

190

p

197

197

String Quartet - 7

204

210

216

222

227

232

String Quartet - 8

237

Measures 237-242. Treble and bass staves. Treble staff has a melodic line with slurs and ties. Bass staff has a lower melodic line with slurs and ties. A piano (*p*) dynamic marking is present in the first measure.

243

Measures 243-248. Treble staff continues the melodic line. Bass staff has a lower melodic line with slurs and ties.

249

Measures 249-253. Treble staff continues the melodic line. Bass staff has a lower melodic line with slurs and ties. A forte (*f*) dynamic marking is present in the fourth measure, and a sforzando (*sf*) marking is present in the fifth measure.

254

Measures 254-258. Treble staff continues the melodic line. Bass staff has a lower melodic line with slurs and ties. A piano (*p*) dynamic marking is present in the third measure. A triplet of eighth notes is marked with a '3' in the second measure. A trill (*tr*) is marked in the fifth measure.

259

Measures 259-264. Treble staff continues the melodic line. Bass staff has a lower melodic line with slurs and ties. A trill (*tr*) is marked in the fourth measure.

265

Measures 265-269. Treble staff continues the melodic line. Bass staff has a lower melodic line with slurs and ties. A forte (*f*) dynamic marking is present in the second measure.

String Quartet - 9

Andante Grazioso

p

9 *rit. a tempo*

15

18

21 *mf*

24 *p*

String Quartet - 10

30

Measures 30-33 of the string quartet. The music is in G minor (three flats). The treble clef part features a melodic line with eighth-note runs and a half-note rest in measure 33. The bass clef part provides a harmonic foundation with eighth-note patterns and a half-note rest in measure 33. Both parts use phrasing slurs to group the eighth-note figures.

34

Measures 34-39 of the string quartet. The treble clef part continues with eighth-note runs, ending with a half-note chord in measure 39. The bass clef part features a steady eighth-note accompaniment, with some measures containing beamed eighth notes. Measure 39 ends with a half-note chord.

40

Measures 40-46 of the string quartet. Measure 40 begins with a forte (*sf*) dynamic marking. The treble clef part has a melodic line with some rests, while the bass clef part has a more active eighth-note pattern. The music concludes with a half-note chord in measure 46.

47

Measures 47-51 of the string quartet. The treble clef part features a melodic line with a half-note rest in measure 50. The bass clef part has a rhythmic pattern of eighth notes and rests. The section ends with a half-note chord in measure 51.

52

Measures 52-58 of the string quartet. The treble clef part has a melodic line with eighth-note runs. The bass clef part provides a harmonic accompaniment with eighth notes and rests. The music concludes with a half-note chord in measure 58.

59

Measures 59-63 of the string quartet. Measure 59 begins with a forte (*sf*) dynamic marking. The treble clef part features a melodic line with eighth-note runs. The bass clef part has a rhythmic pattern of eighth notes and rests. The section ends with a forte (*f*) dynamic marking and a half-note chord in measure 63.

String Quartet - 11

64

Measures 64-67 of the String Quartet. The music is in B-flat major (two flats). Measures 64-65 feature a continuous eighth-note pattern in the right hand and a steady eighth-note bass line in the left hand. Measure 66 has a half rest in the right hand and a half note in the left hand. Measure 67 features a piano (*p*) dynamic with a half note in the right hand and a half note in the left hand.

68

Measures 68-71 of the String Quartet. Measures 68-70 feature a continuous eighth-note pattern in the right hand and a steady eighth-note bass line in the left hand. Measure 71 features a piano (*p*) dynamic with a half note in the right hand and a half note in the left hand.

72

Measures 72-74 of the String Quartet. Measures 72-73 feature a continuous eighth-note pattern in the right hand and a steady eighth-note bass line in the left hand. Measure 74 features a half note in the right hand and a half note in the left hand.

75

Measures 75-79 of the String Quartet. Measures 75-76 feature a continuous eighth-note pattern in the right hand and a steady eighth-note bass line in the left hand. Measures 77-79 feature a half note in the right hand and a half note in the left hand.

80

Measures 80-84 of the String Quartet. Measures 80-81 feature a continuous eighth-note pattern in the right hand and a steady eighth-note bass line in the left hand. Measures 82-84 feature a half note in the right hand and a half note in the left hand. A forte (*sf*) dynamic is indicated in measure 83.

85

Measures 85-88 of the String Quartet. Measures 85-86 feature a continuous eighth-note pattern in the right hand and a steady eighth-note bass line in the left hand. Measures 87-88 feature a half note in the right hand and a half note in the left hand. A piano (*p*) dynamic is indicated in measure 87.

String Quartet - 12

89

Measures 89-93 of the String Quartet. The music is in B-flat major (two flats). The treble clef part features a melodic line with a long slur over measures 89-91 and a final phrase in measure 93. The bass clef part provides a rhythmic accompaniment with dense sixteenth-note chords in measures 89-91, followed by a more sparse texture in measures 92-93.

94

Measures 94-98 of the String Quartet. The treble clef part continues the melodic development with a slur over measures 94-96 and a final note in measure 98. The bass clef part features a rhythmic pattern of eighth and sixteenth notes, with some rests in measures 96-98.

99

Measures 99-102 of the String Quartet. The treble clef part has a melodic line with a slur over measures 99-101 and a final phrase in measure 102. The bass clef part continues the rhythmic accompaniment with eighth and sixteenth notes.

103

Measures 103-107 of the String Quartet. The treble clef part features a melodic line with a slur over measures 103-105 and a final phrase in measure 107. The bass clef part continues the rhythmic accompaniment with eighth and sixteenth notes.

108

Measures 108-110 of the String Quartet. The treble clef part features a melodic line with a slur over measures 108-110. The bass clef part continues the rhythmic accompaniment with eighth and sixteenth notes.

111

Measures 111-115 of the String Quartet. The treble clef part features a melodic line with a slur over measures 111-113 and a final phrase in measure 115. The bass clef part continues the rhythmic accompaniment with eighth and sixteenth notes. A dynamic marking of *p* (piano) is present in measure 114.

String Quartet - 13

116

Measures 116-121. The music is in G minor (three flats). Measure 116 features a treble staff with sixteenth-note chords and a bass staff with eighth-note chords. Measure 117 continues with similar textures. Measure 118 has a *mf* dynamic marking. Measures 119 and 120 show more complex chordal textures. Measure 121 ends with a half note chord in the treble and a half note in the bass.

122

Measures 122-125. Measure 122 has a treble staff with eighth-note chords and a bass staff with eighth-note chords. Measure 123 continues with similar textures. Measure 124 has a treble staff with eighth-note chords and a bass staff with eighth-note chords. Measure 125 ends with a half note chord in the treble and a half note in the bass.

126

Measures 126-129. Measure 126 has a treble staff with eighth-note chords and a bass staff with eighth-note chords. Measure 127 continues with similar textures. Measure 128 has a treble staff with eighth-note chords and a bass staff with eighth-note chords. Measure 129 ends with a half note chord in the treble and a half note in the bass.

130

Measures 130-135. Measure 130 has a treble staff with eighth-note chords and a bass staff with eighth-note chords. Measure 131 continues with similar textures. Measure 132 has a *p* dynamic marking. Measure 133 has a treble staff with eighth-note chords and a bass staff with eighth-note chords. Measure 134 ends with a half note chord in the treble and a half note in the bass. Measure 135 ends with a half note chord in the treble and a half note in the bass.

136

Measures 136-139. Measure 136 has a treble staff with eighth-note chords and a bass staff with eighth-note chords. Measure 137 continues with similar textures. Measure 138 has a treble staff with eighth-note chords and a bass staff with eighth-note chords. Measure 139 ends with a half note chord in the treble and a half note in the bass.

140

Measures 140-143. Measure 140 has a treble staff with eighth-note chords and a bass staff with eighth-note chords. Measure 141 continues with similar textures. Measure 142 has a *pp* dynamic marking. Measure 143 ends with a half note chord in the treble and a half note in the bass.

String Quartet - 14

Menuetto
Allegro con fuoco

Piano I

f

7

sf

14

f

20

p

25

30

mf

String Quartet - 15

36

mf

This system contains measures 36 through 41. The treble clef staff features a melodic line with eighth and sixteenth notes, including a triplet of eighth notes in measure 40. The bass clef staff provides harmonic support with chords and moving lines. A mezzo-forte (*mf*) dynamic marking is present in measure 38.

42

p

This system contains measures 42 through 46. The treble clef staff continues the melodic development. The bass clef staff has a long, sustained note in measure 42, followed by rests. A piano (*p*) dynamic marking is located in measure 45.

47

f

This system contains measures 47 through 54. Measures 47 and 48 feature triplets of eighth notes in both staves. Measures 49 and 50 have triplets of eighth notes in the bass clef staff. A forte (*f*) dynamic marking is in measure 50. The system concludes with a key signature change to one sharp (F#) in measure 54.

55

mf

This system contains measures 55 through 60. The treble clef staff has a melodic line with some rests. The bass clef staff features a moving line of eighth notes starting in measure 58. A mezzo-forte (*mf*) dynamic marking is in measure 60.

61

p

This system contains measures 61 through 65. The treble clef staff has a melodic line with eighth notes. The bass clef staff has a moving line of eighth notes. A piano (*p*) dynamic marking is in measure 62.

66

Fine

This system contains measures 66 through 70, the final measures of the piece. Both staves feature a melodic line of eighth notes. The system ends with a double bar line and repeat dots. The word "Fine" is written at the end of the system.

Trio

String Quartet - 16

70

Measures 70-76 of the Trio section. The music is in G major (one sharp) and 4/4 time. The tempo is marked *p* (piano). The score is written for a grand staff (treble and bass clefs). The melody in the treble clef consists of eighth-note chords, while the bass clef provides a steady eighth-note accompaniment.

77

Measures 77-82 of the Trio section. The music continues with the same eighth-note chordal texture in the treble and eighth-note accompaniment in the bass.

83

Measures 83-88 of the Trio section. The music continues with the same eighth-note chordal texture in the treble and eighth-note accompaniment in the bass.

89

Measures 89-94 of the Trio section. The music continues with the same eighth-note chordal texture in the treble and eighth-note accompaniment in the bass.

95

Measures 95-100 of the Trio section. The music continues with the same eighth-note chordal texture in the treble and eighth-note accompaniment in the bass.

101

Measures 101-106 of the Trio section. The music continues with the same eighth-note chordal texture in the treble and eighth-note accompaniment in the bass. The section concludes with a long, sustained note in the treble clef.

String Quartet - 17

107

Measures 107-111. Treble clef: 107 (F#4, G#4, A4, B4), 108 (A4, G#4, F#4, E4), 109 (D5, C#5, B4, A4), 110 (G#4, F#4, E4, D4), 111 (C#4, B3, A3, G3). Bass clef: 107 (F#2, G2, A2, B2), 108 (C3, D3, E3, F3), 109 (G2, A2, B2, C3), 110 (D3, E3, F3, G3), 111 (A2, B2, C3, D3).

112

Measures 112-116. Treble clef: 112 (F#4, G#4, A4, B4), 113 (A4, G#4, F#4, E4), 114 (D5, C#5, B4, A4), 115 (G#4, F#4, E4, D4), 116 (C#4, B3, A3, G3). Bass clef: 112 (F#2, G2, A2, B2), 113 (C3, D3, E3, F3), 114 (G2, A2, B2, C3), 115 (D3, E3, F3, G3), 116 (A2, B2, C3, D3).

117

Measures 117-121. Treble clef: 117 (F#4, G#4, A4, B4), 118 (A4, G#4, F#4, E4), 119 (D5, C#5, B4, A4), 120 (G#4, F#4, E4, D4), 121 (C#4, B3, A3, G3). Bass clef: 117 (F#2, G2, A2, B2), 118 (C3, D3, E3, F3), 119 (G2, A2, B2, C3), 120 (D3, E3, F3, G3), 121 (A2, B2, C3, D3).

122

Measures 122-126. Treble clef: 122 (F#4, G#4, A4, B4), 123 (A4, G#4, F#4, E4), 124 (D5, C#5, B4, A4), 125 (G#4, F#4, E4, D4), 126 (C#4, B3, A3, G3). Bass clef: 122 (F#2, G2, A2, B2), 123 (C3, D3, E3, F3), 124 (G2, A2, B2, C3), 125 (D3, E3, F3, G3), 126 (A2, B2, C3, D3).

127

Measures 127-131. Treble clef: 127 (F#4, G#4, A4, B4), 128 (A4, G#4, F#4, E4), 129 (D5, C#5, B4, A4), 130 (G#4, F#4, E4, D4), 131 (C#4, B3, A3, G3). Bass clef: 127 (F#2, G2, A2, B2), 128 (C3, D3, E3, F3), 129 (G2, A2, B2, C3), 130 (D3, E3, F3, G3), 131 (A2, B2, C3, D3).

133

Il Menuetto D.C. senza Replica

Measures 133-137. Treble clef: 133 (F#4, G#4, A4, B4), 134 (A4, G#4, F#4, E4), 135 (D5, C#5, B4, A4), 136 (G#4, F#4, E4, D4), 137 (C#4, B3, A3, G3). Bass clef: 133 (F#2, G2, A2, B2), 134 (C3, D3, E3, F3), 135 (G2, A2, B2, C3), 136 (D3, E3, F3, G3), 137 (A2, B2, C3, D3).

String Quartet - 18

Vivace

Measures 1-6 of the musical score. The key signature is one sharp (F#) and the time signature is 2/4. The tempo is marked "Vivace". The first staff is labeled "Piano I" and starts with a piano (*p*) dynamic. The music features a mix of eighth and sixteenth notes, with some chords. Measures 4 and 5 contain triplets of eighth notes.

Measures 7-12 of the musical score. Measure 7 begins with a triplet of eighth notes. Measures 8-12 show a rhythmic pattern of eighth notes and chords. The dynamics shift from piano (*p*) to forte (*f*) starting in measure 8.

Measures 13-18 of the musical score. The music continues with eighth and sixteenth notes. Measure 14 features a forte (*f*) dynamic. The key signature changes to two sharps (F# and C#) in measure 15.

Measures 19-26 of the musical score. The music consists of eighth notes and chords. The key signature remains two sharps (F# and C#).

Measures 27-33 of the musical score. Measure 27 starts with a piano (*p*) dynamic. The music features a mix of eighth notes and chords. Measure 33 ends with a repeat sign.

Measures 34-39 of the musical score. Measure 34 begins with a triplet of eighth notes. Measures 35-39 continue with eighth notes and chords. Measures 37 and 38 contain triplets of eighth notes.

String Quartet - 19

42

3 4

f

tr

49

56

tr

tr

tr

tr

sf

sf

63

2

2

p

72

81

mf

String Quartet - 20

87

Measures 87-91 of the String Quartet. The music is in G major (one sharp). The treble staff features a continuous sixteenth-note arpeggiated pattern. The bass staff has a more rhythmic accompaniment, including a trill in measure 89.

92

Measures 92-97. The treble staff continues with the arpeggiated pattern, while the bass staff features trills in measures 92 and 93, and a more active melodic line.

98

Measures 98-102. The treble staff has a melodic line with a *p* (piano) dynamic in measure 98. The bass staff has a steady eighth-note accompaniment, with a *f* (forte) dynamic starting in measure 100.

103

Measures 103-109. The treble staff has a melodic line with a *p* (piano) dynamic in measure 104. The bass staff continues with the eighth-note accompaniment.

110

Measures 110-117. The treble staff features a series of chords, mostly triads and dyads, with a *p* (piano) dynamic. The bass staff has a simple eighth-note accompaniment.

118

Measures 118-123. The treble staff has a melodic line with a *p* (piano) dynamic. The bass staff continues with the eighth-note accompaniment.

String Quartet - 21

125

Measures 125-131. The music is in G major (one sharp). The treble staff features a melodic line with eighth and sixteenth notes, while the bass staff provides a rhythmic accompaniment with eighth and sixteenth notes. Measure 131 ends with a repeat sign.

132

Measures 132-137. Measure 132 begins with a piano (*p*) dynamic. Measures 133-134 contain triplet markings (3) over eighth notes. Measure 135 features a quartet marking (4) over eighth notes. The piece concludes with a repeat sign.

138

Measures 138-143. Measure 138 starts with a forte (*f*) dynamic. Measures 139-140 include triplet markings (3) over eighth notes. Measure 143 ends with a piano (*p*) dynamic and a repeat sign.

144

Measures 144-150. Measure 144 begins with a forte (*f*) dynamic. Measures 145-146 contain triplet markings (3) over eighth notes. The section ends with a repeat sign.

151

Measures 151-157. Measure 151 starts with a trill (*tr*) over a half note. Measures 152-153 feature a slur over eighth notes. Measure 157 ends with a trill (*tr*) over a half note and a repeat sign.

158

Measures 158-164. Measure 158 begins with a trill (*tr*) over a half note. Measures 159-160 contain triplet markings (3) over eighth notes. Measure 164 ends with a trill (*tr*) over a half note and a repeat sign.

String Quartet - 22

164

Measures 164-170. Treble clef: G4, A4, B4, C5, B4, A4, G4, F#4, E4, D4, C4, B3, A3, G3, F#3, E3, D3, C3. Bass clef: G2, A2, B2, C3, D3, E3, F#3, G3, A3, B3, C4, D4, E4, F#4, G4, A4, B4, C5.

171

Measures 171-177. Treble clef: G4, A4, B4, C5, B4, A4, G4, F#4, E4, D4, C4, B3, A3, G3, F#3, E3, D3, C3. Bass clef: G2, A2, B2, C3, D3, E3, F#3, G3, A3, B3, C4, D4, E4, F#4, G4, A4, B4, C5.

178

Measures 178-185. Treble clef: G4, A4, B4, C5, B4, A4, G4, F#4, E4, D4, C4, B3, A3, G3, F#3, E3, D3, C3. Bass clef: G2, A2, B2, C3, D3, E3, F#3, G3, A3, B3, C4, D4, E4, F#4, G4, A4, B4, C5.

186

Measures 186-191. Treble clef: G4, A4, B4, C5, B4, A4, G4, F#4, E4, D4, C4, B3, A3, G3, F#3, E3, D3, C3. Bass clef: G2, A2, B2, C3, D3, E3, F#3, G3, A3, B3, C4, D4, E4, F#4, G4, A4, B4, C5.

192

Measures 192-201. Treble clef: G4, A4, B4, C5, B4, A4, G4, F#4, E4, D4, C4, B3, A3, G3, F#3, E3, D3, C3. Bass clef: G2, A2, B2, C3, D3, E3, F#3, G3, A3, B3, C4, D4, E4, F#4, G4, A4, B4, C5. Dynamic marking *mf* in measure 200.

202

Measures 202-208. Treble clef: G4, A4, B4, C5, B4, A4, G4, F#4, E4, D4, C4, B3, A3, G3, F#3, E3, D3, C3. Bass clef: G2, A2, B2, C3, D3, E3, F#3, G3, A3, B3, C4, D4, E4, F#4, G4, A4, B4, C5. Dynamic marking *f* in measure 208.

String Quartet - 23

208

Measures 208-214. Treble clef: eighth-note triplets with trills. Bass clef: whole rest, then eighth-note line, then eighth-note triplets with trills.

215

Measures 215-222. Treble clef: eighth-note pairs and triplets with trills. Bass clef: eighth-note triplets with trills, piano (p) dynamic, eighth-note pairs with trills.

223

Measures 223-231. Treble clef: half notes, eighth-note groups with trills. Bass clef: eighth-note triplets with trills, piano (p) dynamic, eighth-note groups.

232

Measures 232-240. Treble clef: eighth-note groups with trills and triplets. Bass clef: eighth-note groups with trills and triplets.

241

Measures 241-246. Treble clef: eighth-note groups with trills, forte (f) dynamic, eighth-note groups. Bass clef: eighth-note groups with trills, eighth-note lines.

247

Measures 247-252. Treble clef: eighth-note groups with trills, first and fourth fingerings, eighth-note groups. Bass clef: eighth-note groups with trills, eighth-note lines, eighth-note groups.

String Quartet - 24

254

3 3 3 2 1 2 4 3

tr

259

4

tr

265

f *p*

271

278

285

f