

Held, du hast den Feind gebunden

Ritornello

Philipp Heinrich Erlebach

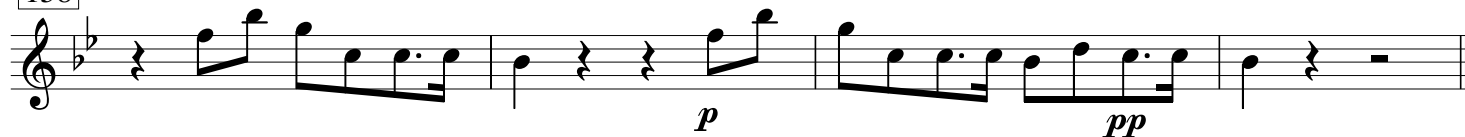
Violino 1

[illegible]

140 **Aria Vers 2**



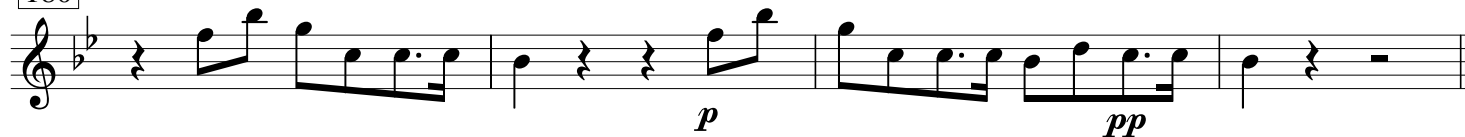
158



162 **Vers 3**



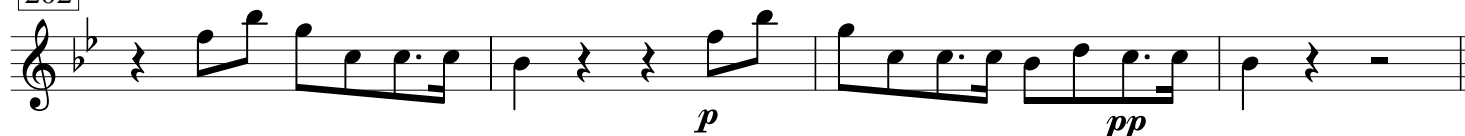
180



184 **Vers 4**



202



206 **Vers 5**



212



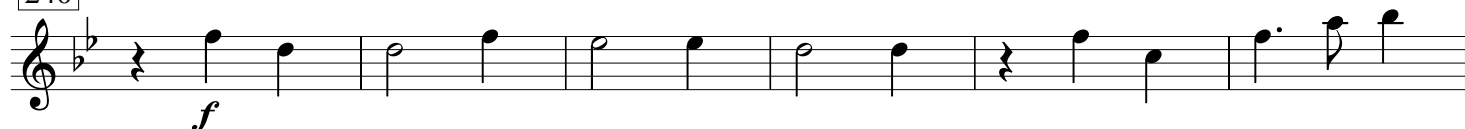
218



224



240



246

8

[illegible][illegible]

287

This block contains measures 287 through 292 of the musical score. Measure 287 begins with a treble clef and a key signature of one flat (B-flat). The melody consists of a half note B-flat, followed by quarter notes C, D, E, and F. The piano accompaniment features a steady eighth-note pattern in the right hand and a similar pattern in the left hand, with a B-flat in the bass. Measures 288-292 continue the melodic and harmonic progression, with the piano part providing a consistent accompaniment.

293

9

[illegible]

313

A musical staff in 3/4 time, key of B-flat major. The first measure contains a single-measure rest, indicated by a 'Z' symbol. The rest is positioned on the first line of the staff. The notation is in treble clef. The piece concludes with a *p* (piano) dynamic marking.

319

f

325

p *f*

331

Exercise 331 is a single-line musical piece in treble clef with a key signature of one flat (B-flat). It consists of seven measures. The notes and rests are as follows: Measure 1: B4 (quarter), C5 (quarter), B4 (quarter). Measure 2: A4 (half), rest (half). Measure 3: G4 (half), rest (half). Measure 4: F4 (quarter), E4 (quarter), D4 (quarter). Measure 5: C4 (half), B3 (half). Measure 6: A3 (half), G3 (half). Measure 7: F3 (half), E3 (half), D3 (half).

338

p