

Bass Recorder

"The Flatt Consort"

Set 1

Matthew Locke (1630 - 1677)

1. Fantasia I

♩ = 110

8

10

21

28

33

39

47

55

61

2. Courant

♩ = 160

8

13

25

Detailed description: This block contains the first three systems of music for '2. Courant'. The music is written in bass clef with a key signature of two flats (B-flat and E-flat) and a 3/4 time signature. The first system (measures 1-8) begins with a treble clef '8' indicating an octave shift. The second system (measures 9-16) includes a repeat sign at measure 13. The third system (measures 17-24) ends with a repeat sign at measure 25.

3. Fantasia II

♩ = 100

8

6

11

16

22

28

36

Detailed description: This block contains the first seven systems of music for '3. Fantasia II'. The music is written in bass clef with a key signature of two flats (B-flat and E-flat) and a common time signature. The first system (measures 1-8) begins with a treble clef '8' indicating an octave shift. The second system (measures 9-14) includes a measure rest at measure 11. The third system (measures 15-21) includes a measure rest at measure 16. The fourth system (measures 22-27) includes a measure rest at measure 22. The fifth system (measures 28-35) includes a measure rest at measure 28. The sixth system (measures 36-41) includes a measure rest at measure 36. The seventh system (measures 42-47) includes a measure rest at measure 42.

42



47



55

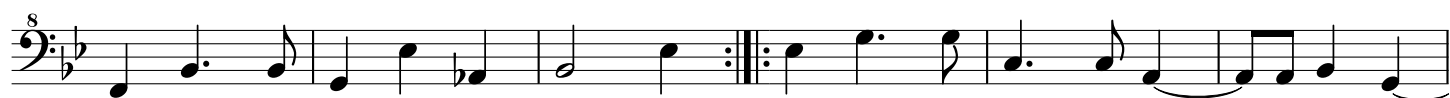


4. Saraband

♩ = 100



6



12



5. Fantasia III

♩ = 110



7



11



15



19



23



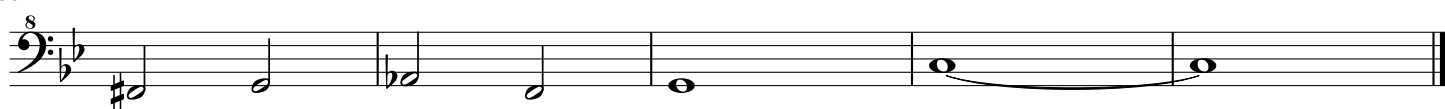
30



34



38



6. Jigg

♩ = 100



7



♩ = 100

13

