

Horn in F 2

Concerto stilizzato

paraphrase on a motif by Brahms

PARTE PRIMA: “CADENZA”

Adagio ♩ = 60 **Cadenza**

Tamás Beischer-Matyó

Adagio ♩ = 60 Cadenza

22 25 30

ppp *ff* *ff*

PARTE SECONDA: “FORMA-SONATA”

poco rall. _ _ _ **Poco sostenuto** **Allegro con brio** ♩ = 180 (♩ = 60)

[illegible][illegible]

45

p *p cresc.*

50

(cresc.) - - - - - mf

2

mf \leq f

3

Copyright Tamás Beischer-Matyó, 1996

www.beischermatyo.hu/concerto_stilizzato

This work is licensed under the Creative Commons Attribution-NonCommercial-NoDerivatives 4.0 International License. To view a copy of this license, visit www.creativecommons.org/licenses/by-nc-nd/4.0/

Fl. 75

f molto espressivo

80

p *f* *f* *sf* *p*

85 3 Tpt. 1-2 90

sfz *sfz* *sfz* *ff*

poco ritard. Sostenuto $\text{♩} = 48$ ($\text{♩} = 144$)

open 95

p *ff* grandioso

allarg. - - - - - a tempo $\text{♩} = 60$ ($\text{♩} = 180$)

100 S. pno.

Hp. 105 Fl., Cl., Bsn.

poco ritard. a tempo poco ritard. a tempo

110

f *pp*

Bsn., Tbn. 115

f

B. cl., Vc. 120 Hn. 1

f espress. *mf* *f*

125

mf *f* *p* *mp*

130

mp *f*

molto rall. a tempo

135

pp *ff* *p*

C. a., Tpt. 3

140

p *f*

+Cl. 1

rall. **Meno allegro** ♩ = 120

150

p *pp* *p* *pp* *p*

espressivo

leggero

Fl. 1, Cl. 1

(senza rall.) accel. al ♩ = 180 (a tempo)

8

f *ppp* *p*

165

mp *mf* *f* *mf*

Fl., Cl. 1

Hn. 3-4

170

ff *ff*

175

mf *mf*

180

PARTE TERZA: "LIED"

subito **Adagio molto** ♩ = 60 (♩ = ♩)

185

mf *mf*

5

2

10

allargando 205 *a tempo* 210

molto rall. *più adagio e molto flessibile* $\text{♩} = 48$ *poco a poco allarg.* 220

PARTE QUARTA: "RONDÒ"

a tempo ($\text{♩} = 48$) *rall.* *Allegro vivace* $\text{♩} = 180$ ($\text{♩} = 90$)

230 Hn. 3-4 *p cresc.* *f* *f marcato*

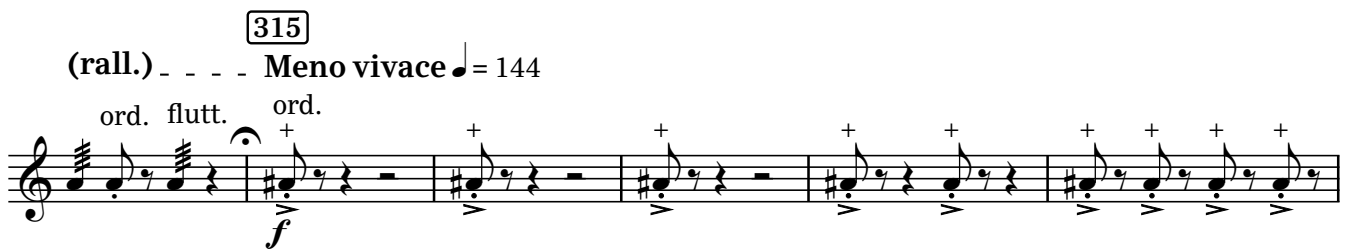
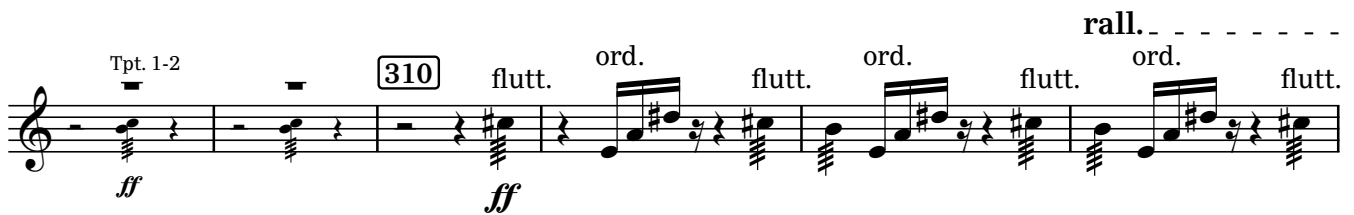
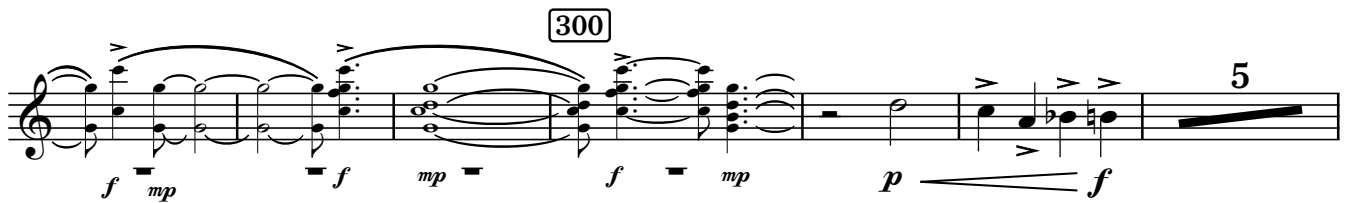
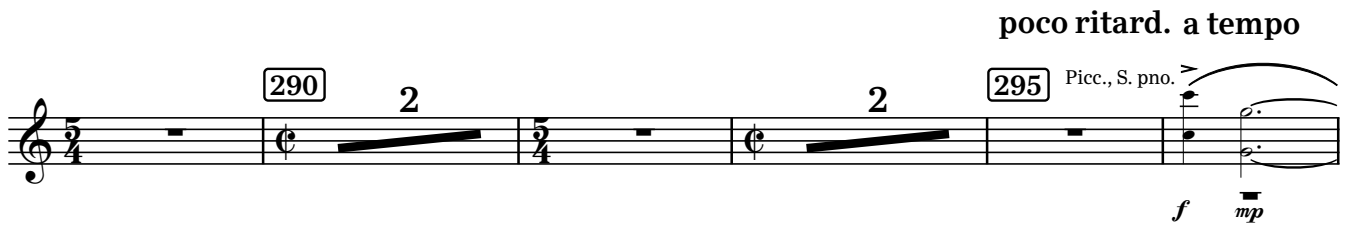
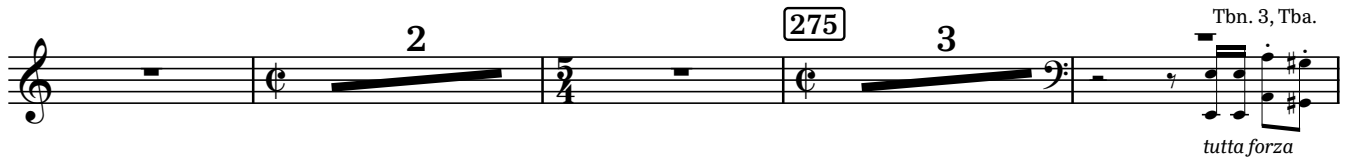
235 *poco rall.* *a tempo* Hn. 3 240 *p*

rall. *a tempo* 245 Hn. 1 *p* *f*

250 *p* *f* *mf*

255

260 *ff* *p*



340 **rall.** **a tempo** *mp* *Tpt. 1* *S. pno.*

345 **rall.** *ff*

350 **Allegro vivace** $\text{♩} = 180$ *f marcato*

355

360

365

370

375

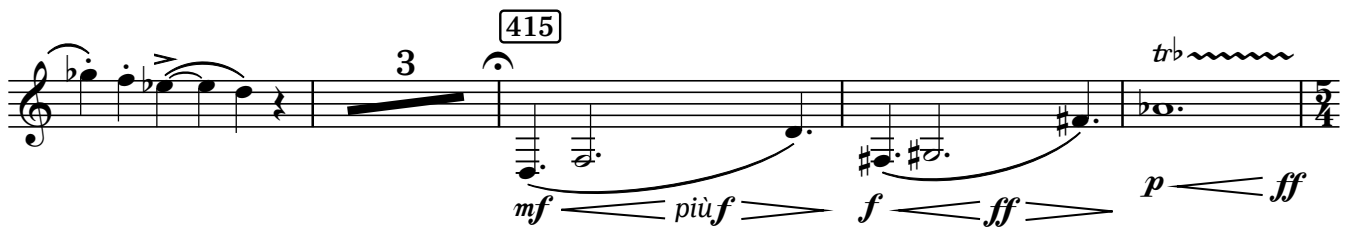
380 **poco rall. Sostenuto** $\text{♩} = 48$ ($\text{♩} = 144$) *ff grandioso*

385 **allarg.** **a tempo** $\text{♩} = 180$

390 **rall. molto** *2*

PARTE QUINTA: "CONCLUSIONE"

a tempo ♩ = 180



Poco sostenuto

a tempo, ma poco agitato



rall. molto - - - - - a tempo, molto pomposo

