

Solo Piano Suite 2

No. 3

Kevin Pearson

♩=120

Measures 1-4 of the piece. The music is in 4/4 time. The right hand plays a continuous eighth-note pattern starting on G4, with a half-note G4 at the beginning of each measure. The left hand plays a continuous eighth-note pattern starting on G3, with a half-note G3 at the beginning of each measure. The dynamic is *p* (piano).

Measures 5-8 of the piece. The music continues with the same eighth-note patterns. The dynamic is *mp* (mezzo-piano).

Measures 9-12 of the piece. The music continues with the same eighth-note patterns. The dynamic is *p* (piano).

Measures 13-16 of the piece. The music continues with the same eighth-note patterns. The dynamic is *mp* (mezzo-piano).

Measures 17-20 of the piece. The music continues with the same eighth-note patterns. The dynamic is *mf* (mezzo-forte).

21

Measures 21-24. Treble staff: eighth-note patterns. Bass staff: half-note patterns with ties.

25

Measures 25-28. Treble staff: eighth-note patterns. Bass staff: half-note patterns with ties.

29

Measures 29-32. Treble staff: eighth-note patterns. Bass staff: half-note patterns with ties.

33

Measures 33-36. Treble staff: eighth-note patterns. Bass staff: half-note patterns with ties.

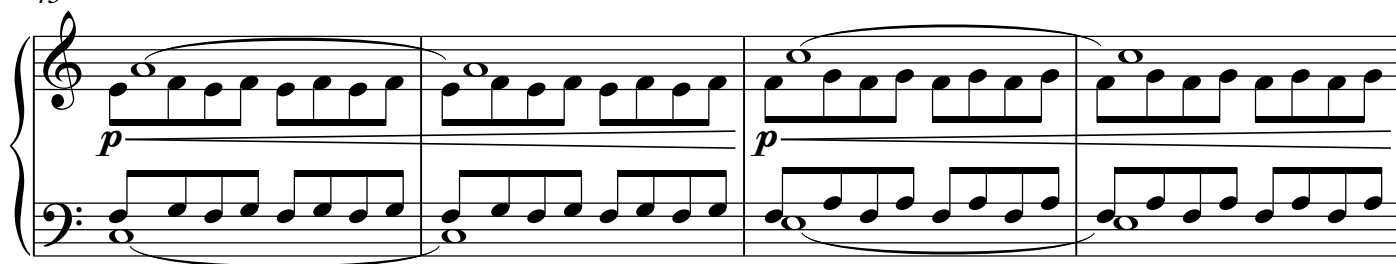
37

Measures 37-40. Treble staff: eighth-note patterns. Bass staff: half-note patterns with ties.

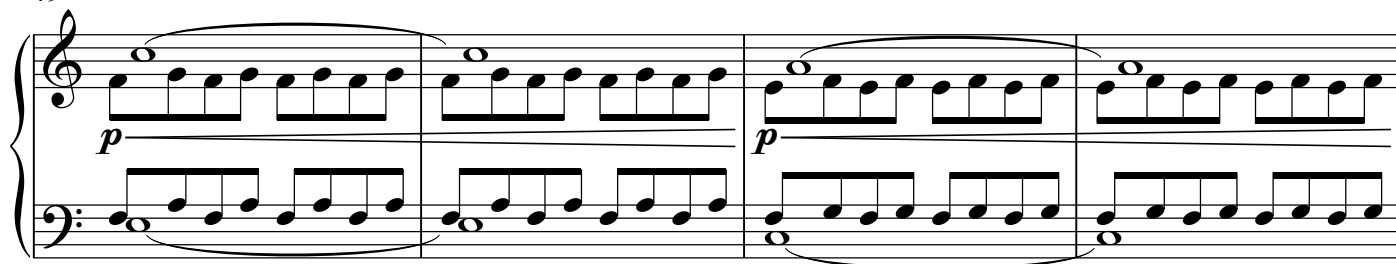
41

Measures 41-44. Treble staff: eighth-note patterns. Bass staff: half-note patterns with ties. Measure 43 starts with a piano (*p*) dynamic.

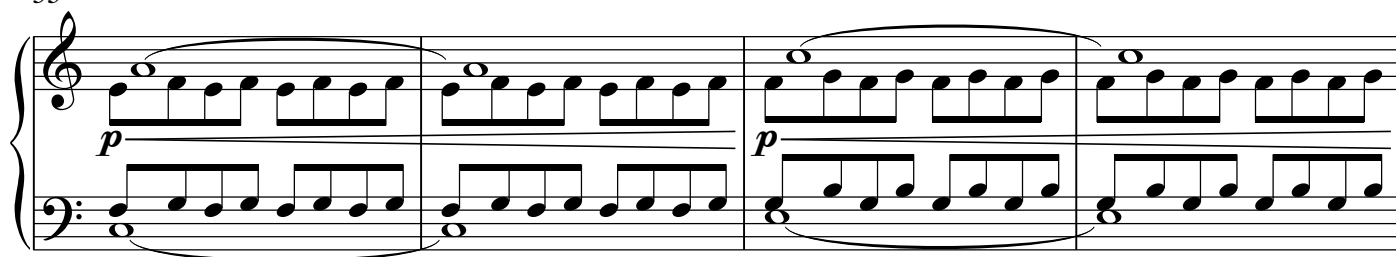
45



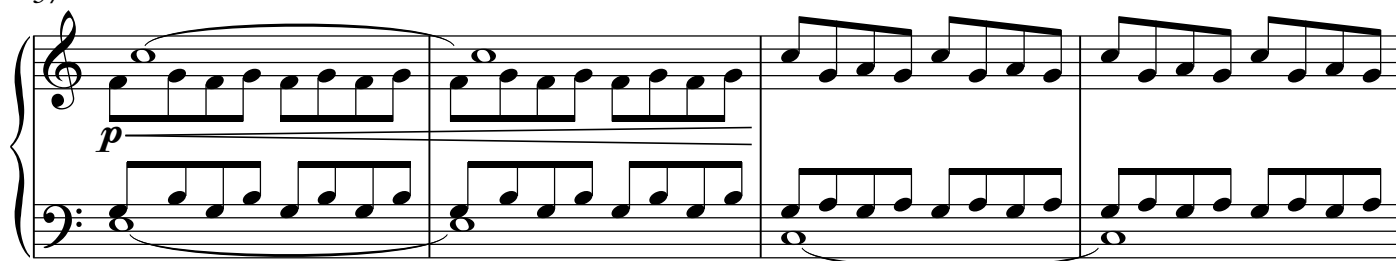
49



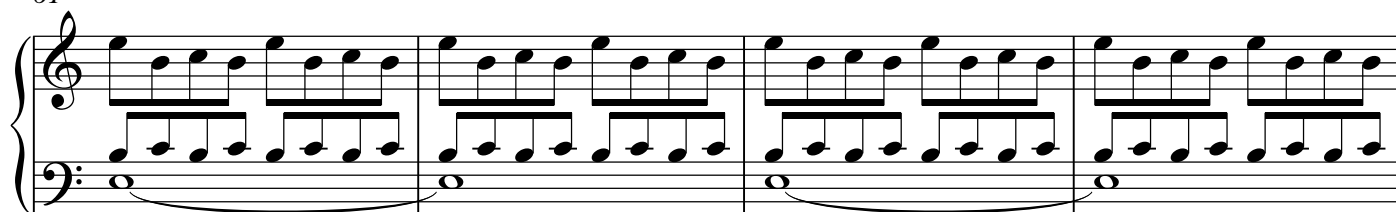
53



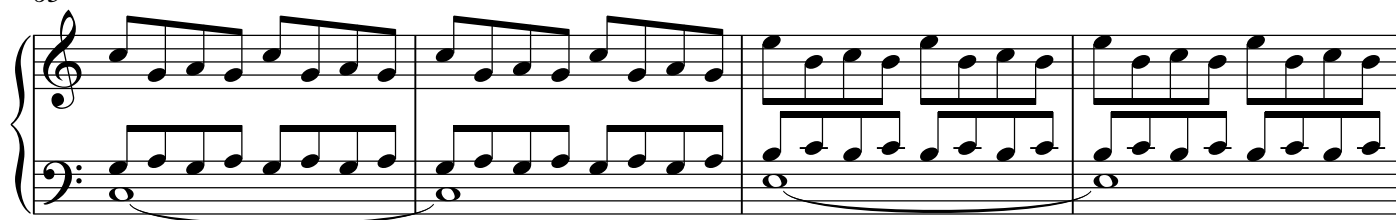
57



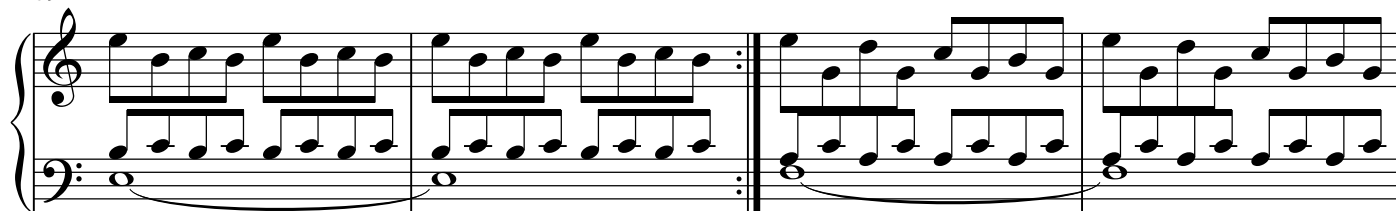
61



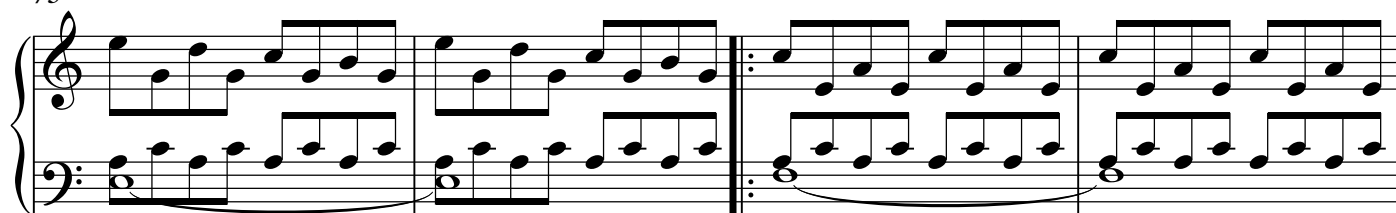
65



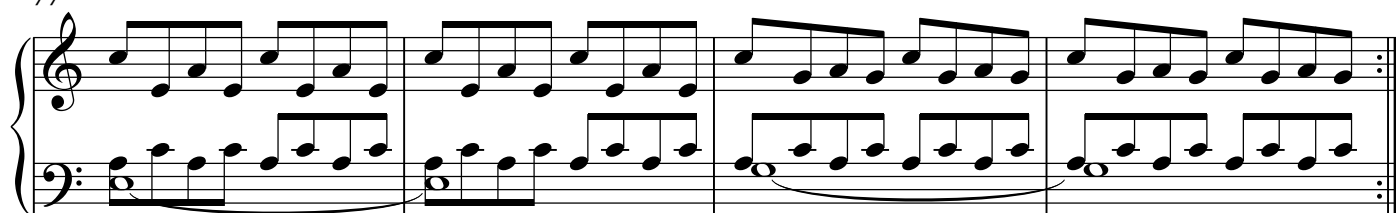
69



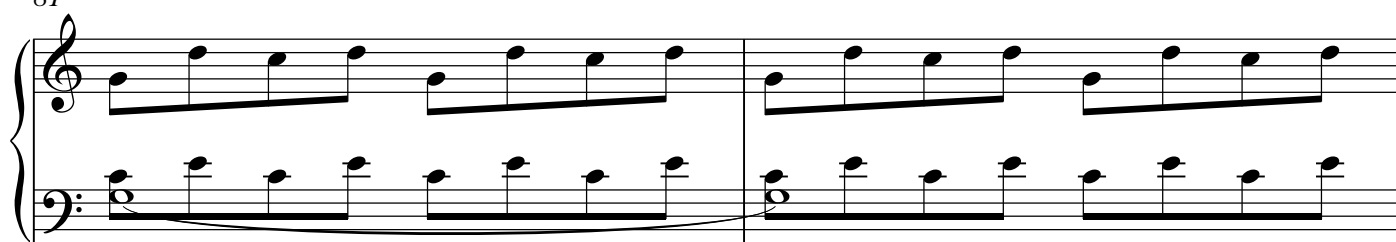
73



77



81



83

