

Tenor

1941 Vocalise for Tenor and Cello

Stephen W. Beatty (1938)

♩ = 90 *mf*

8 AA

5 *mp* *mf* *p* *mp* *mf*

8 *mp* *mf* *p* *f* *mf* *mp* *mf*

11 *mp* *mf* *p*

15 *mf* *pp* *mp* *mf* *mp* *f* *mp* *mf*

19 *mp* *mf* *p* *mf*

23 *p* *mp* *pp* *mf*

27 *mp* *mf*

30 *mp* *mf* *p*

34 *mp* *mf* *pp* *mp* *mf*

38

42 *mp* *mf* *mp*

46 *mf* *mp* *p* *mf* *mp*

50 *mf* *mp* *mf*

55 *f* *mp* *p* *mf* *mp* *mf* *f*

58 *mp* *mf* *mp* *mf* *mp*

62 *mf* *mp* *p* *mf* *p* *mp*

65 *f* *mp* *mf* *mp* *mf* *p*

69 *mf* *p* *mp* *p* *mf* *mp* *mf* *mp* *f* *mp*

73 *pp mp mf mp*

76 *mf mp p mf*

80 *mp pp mf mp p mf pp*

84 *mp mf mp mf mp pp mp mf*

88 *p*

92 *mp f mf mp mf*

96 *mp pp mp mf mp mf*

100 *mp mf p mp mf mp p f mp*

104 *mf mp pp mp mf p*

109 *mf p mp mf*

113

8

mp *p* *mp*

117

8

p *mf*

121

8

p *mp*

125

8

mf *mp* *mf* *pp* *mp* *mf*

129

8

133

8

mp *mf* *mp*

136

8

mf *mp* *mf* *p*

140

8

mf *mp* *mf* *mp* *mf*

144

8

p *mp* *mf*

149

8

mp *mf*

mp *mf* Tenor *p* *mf* *p* *mp*

153

156

mf *p* *mf*

160

p *mf* *mp* *mf*

164

mp *mf*

167

mp *f* *mf* *p* *mp*

Detailed description: This image shows a musical score for a Tenor part, spanning measures 153 to 167. The music is written on a single staff in treble clef with a key signature of one flat (B-flat). The time signature is 8/8. The score is divided into five systems, each containing four measures. Dynamic markings are placed above the notes: *mp* (mezzo-piano), *mf* (mezzo-forte), *p* (piano), and *f* (forte). The notation includes eighth notes, quarter notes, and half notes, with some measures featuring beams connecting eighth notes. Measure 153 starts with a treble clef and a key signature change to one flat. The piece concludes with a double bar line at the end of measure 167.

Violoncello

1941 Vocalise for Tenor and Cello

Stephen W. Beatty (1938)

$\text{♩} = 90$



5



9



13



17



21



25



29



33



37



41



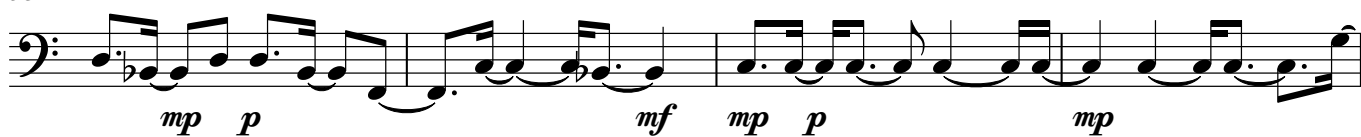
45



49



53



57



61



65



69



73



77



81



85



89



93



97



101



105



109



113



117



121



126



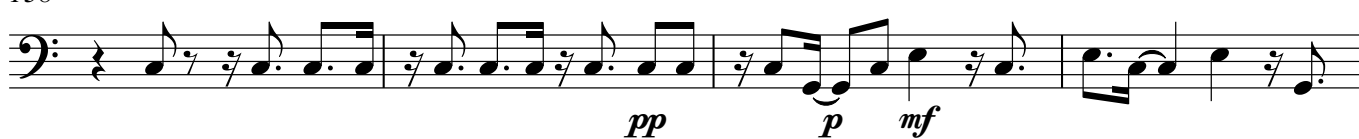
130



134



138



142



146



150



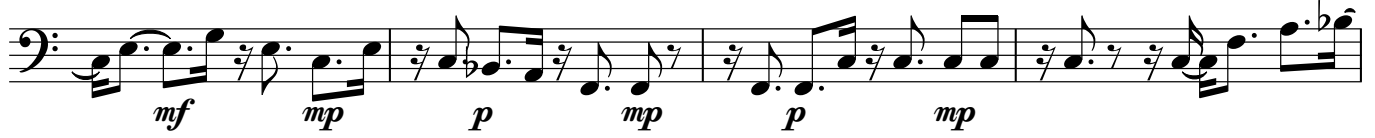
154



158



162



166



169

