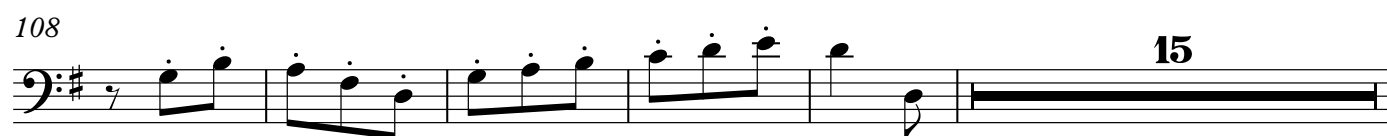
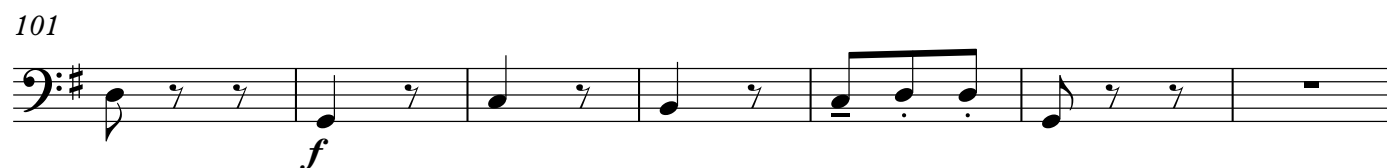
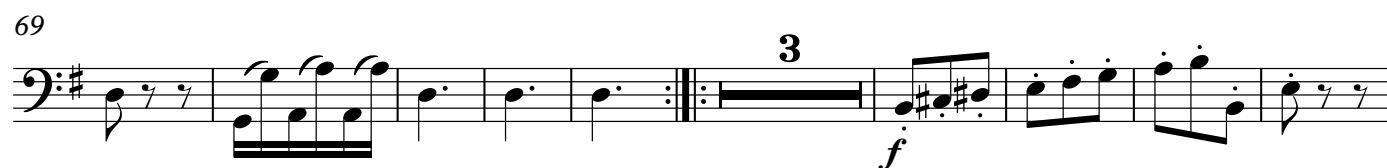
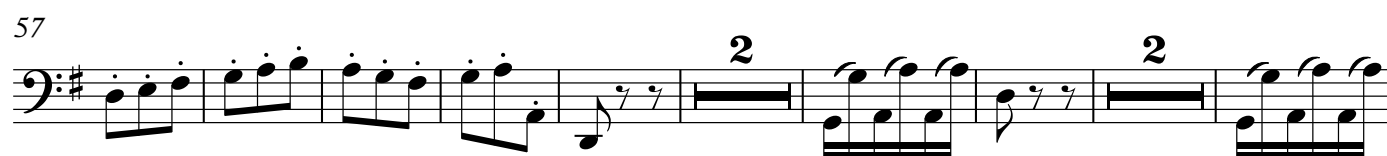
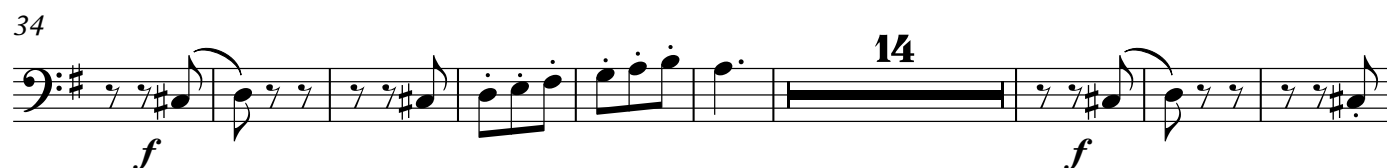
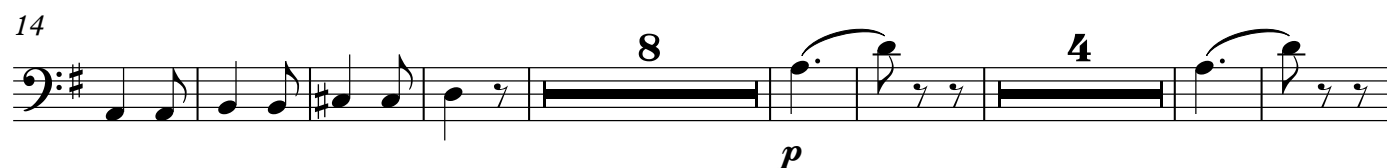
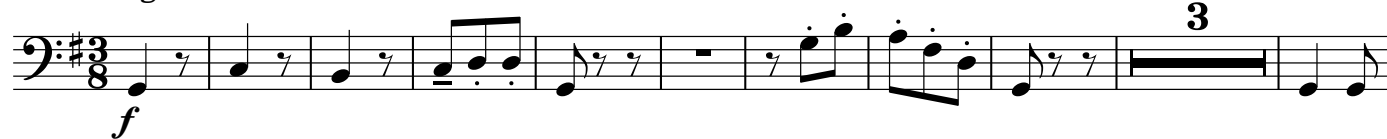


Violoncello

Soler Flair

1.

Soler/Johnson

Allegro

Violoncello

Violoncello

128



137



144



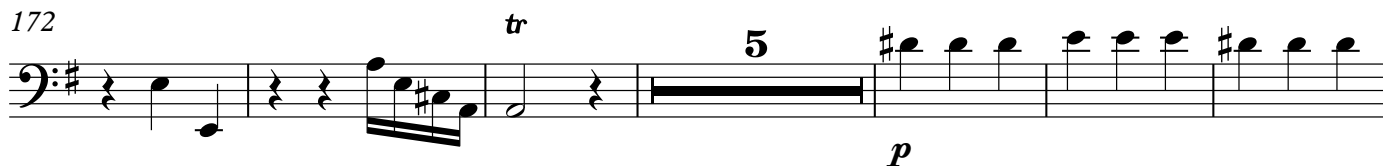
154



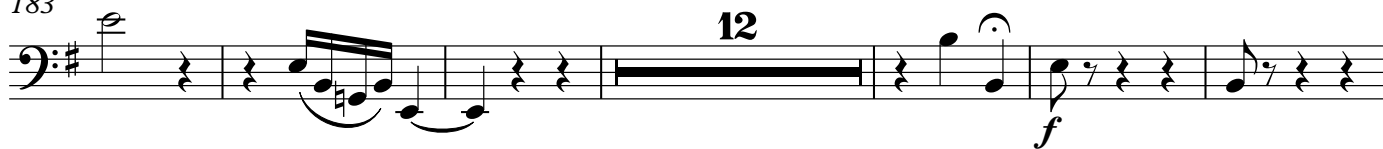
2.

165 **Allegro**)♩=104)

172



183



201



208



2.

20

p *f*

1. 2.

3.

- Allegretto (♩=82)

f

2

4

3

3

3

Violoncello

Violoncello

Violoncello musical score, measures 1-12. The music is in bass clef with a key signature of one sharp (F#). The notation includes various note values, rests, and dynamic markings. Measures 1-4 contain a melodic line with eighth and quarter notes. Measures 5-8 continue the melody with some rests. Measures 9-12 feature a triplet of eighth notes and a final measure with a half note and a quarter note.

4.

Allegro non tanto (♩=108)

Violoncello musical score, measures 13-18. The music is in bass clef with a key signature of one sharp (F#). The notation includes various note values, rests, and dynamic markings. Measures 13-16 contain a melodic line with eighth and quarter notes. Measures 17-18 feature a triplet of eighth notes and a final measure with a half note and a quarter note.

Violoncello

5

Violoncello musical score, page 5. The score consists of nine staves of music in bass clef. The key signature has one flat (B-flat). The music features various rhythmic patterns, including eighth and sixteenth notes, and rests. There are several measures with repeat signs and first/second endings. Dynamics include *f* (forte). The piece concludes with a double bar line and a key signature change to two sharps (F# and C#).

Violoncello

[illegible][illegible]

The first staff of music is written in bass clef with a key signature of two flats (B-flat and E-flat). The melody begins with a quarter note G2, followed by an eighth note F2, a quarter note E2, and a quarter note D2. The second measure contains a dotted quarter note C2, a half rest, and a triplet of eighth notes (B1, A1, G1) beamed together. The third measure continues with a quarter note F1, an eighth note E1, a quarter note D1, and a quarter note C1. The fourth measure consists of a quarter note B1, an eighth note A1, a quarter note G1, and a quarter note F1.

Musical notation for the bass line of 'The Rose Tree'. The key signature is one flat (B-flat), and the time signature is 4/4. The melody consists of the following notes: G2 (quarter), A2 (quarter), Bb2 (quarter), A2 (quarter), G2 (quarter), F2 (quarter), E2 (quarter), D2 (half). The piece ends with a double bar line and repeat dots.