

CLARO DE LUNA

ADAGIO SOSTENUTO DE LA SONATA Op. 27 N.º 2.
DE BEETHOVEN.

Arr: de F. TÁRREGA.

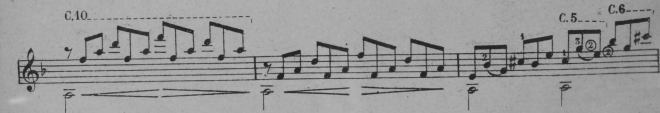
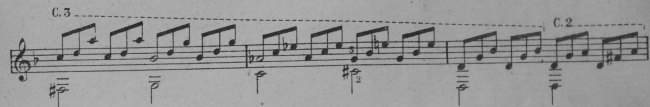
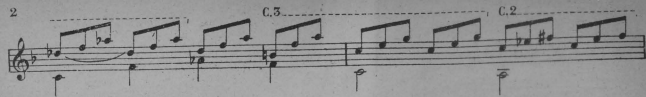
6ª en Re.
sempre *pp*

C.1 C.3

C.1 C.3 C.3 C.1

C.3 C.4 C.5

C.5



4

C. 5

C. 3

C. 2

cresc.

p

pp

C. 10

C. 5

C. 10

C. 5

C. 7

decresc.

pp