



音樂短劇-切莫跟隨時代潮流

Double Bass

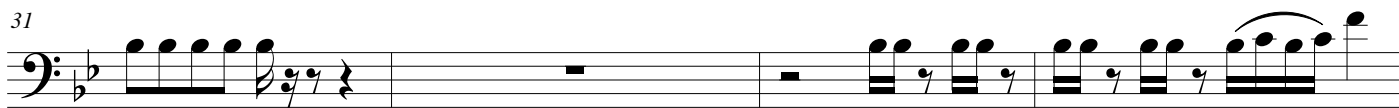
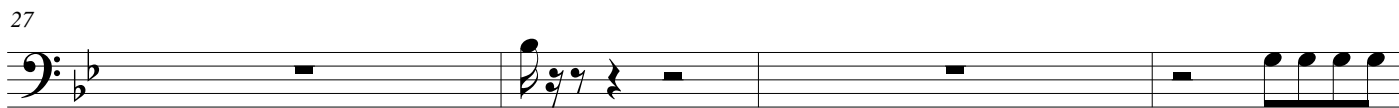
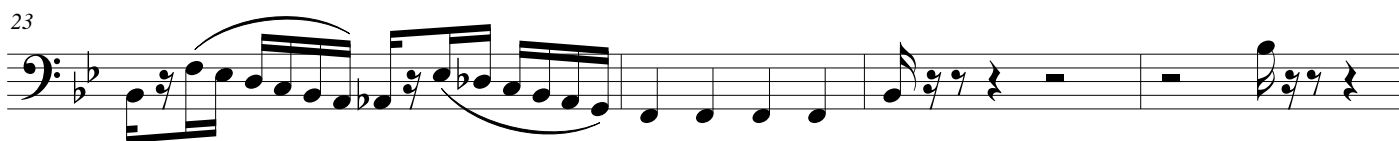
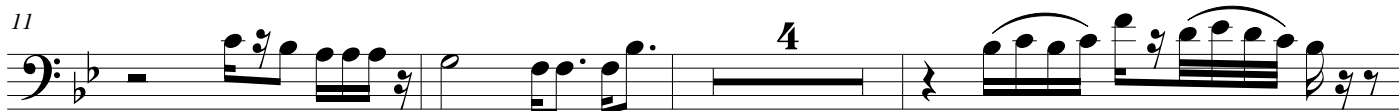
CHENG-SHIUN

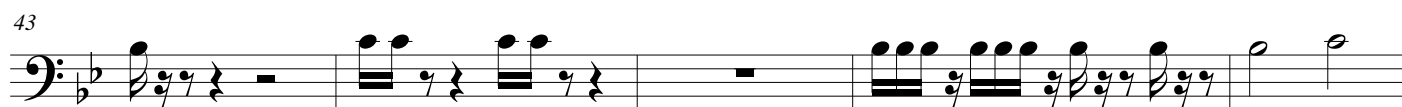
序曲 (Overture)

♩ = 80



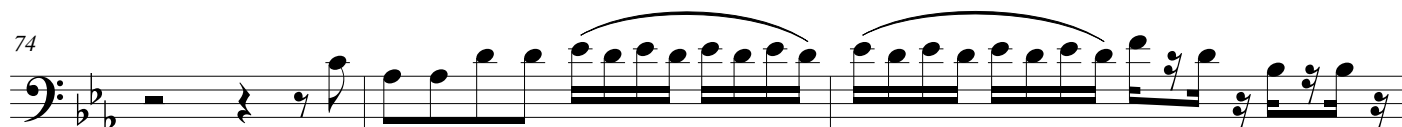
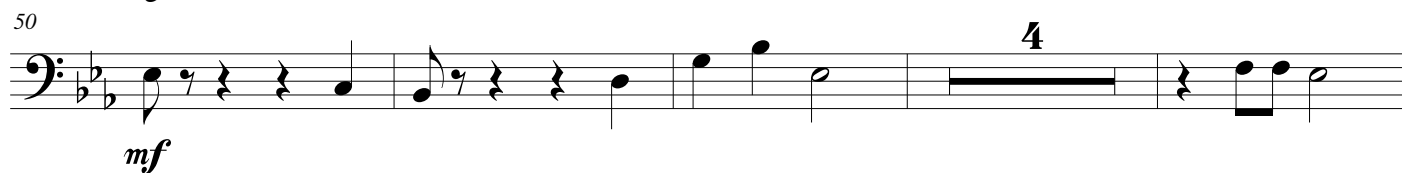
mp





起始敘 (Prologue)

$\text{♩} = 80$



77

mp

84

92

To Coda

mf

97

101

105

109

113

rit.

$\text{♩} = 56$

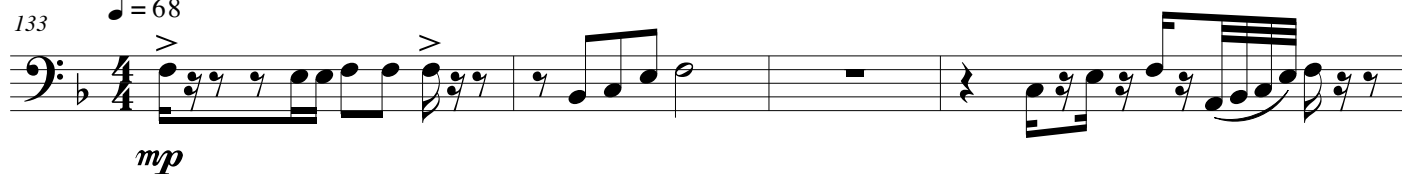
8

mp

126

3

2

133 $\text{♩} = 68$ 

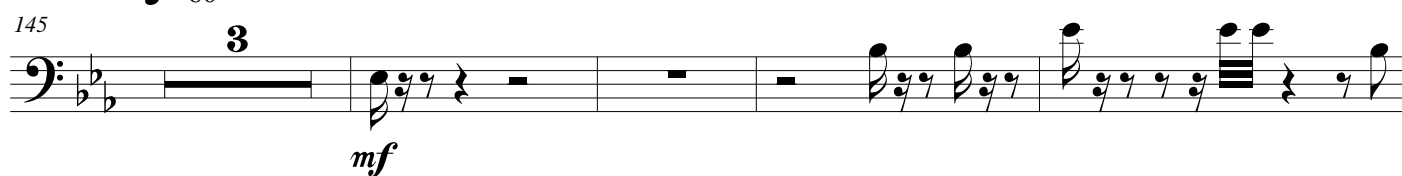
137



141

 $\text{♩} = 80$

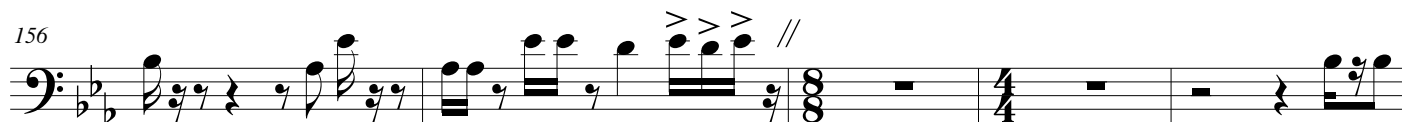
145



152



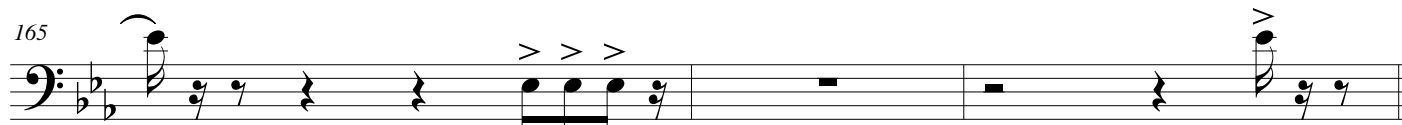
156



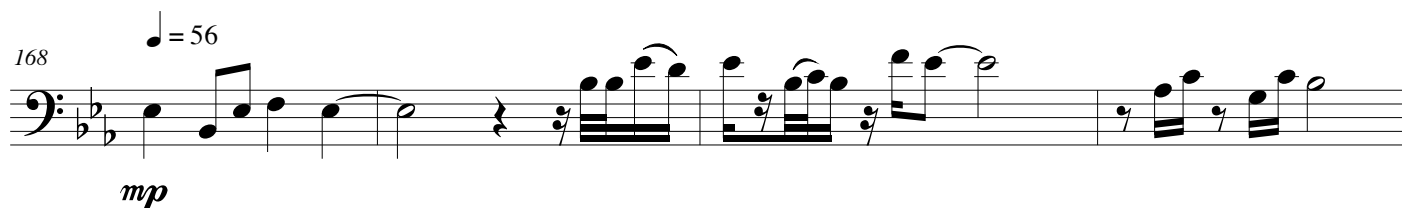
161

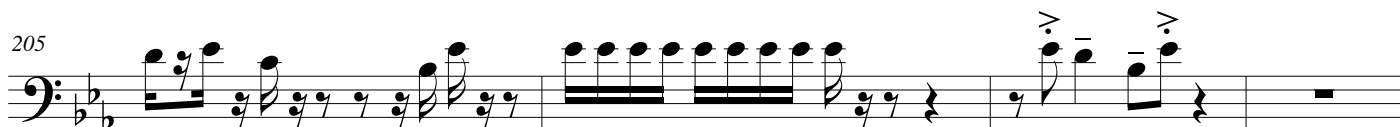
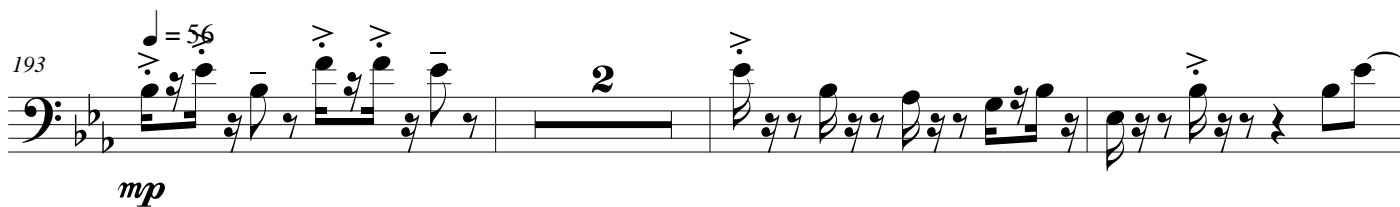


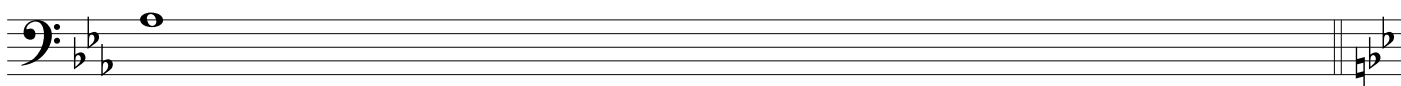
165

 $\text{♩} = 56$

168





$\mathcal{I}r$ 

♩ = 68

5

 mf

218

[illegible]

♩ = 56

6



mp

mp

Musical notation for the bass line of 'The Rose Tree'. The key signature is three flats (B-flat, E-flat, A-flat). The melody consists of eighth and sixteenth notes, with a repeat sign at the end.

2



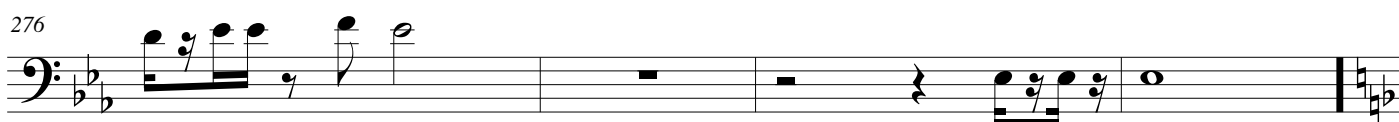
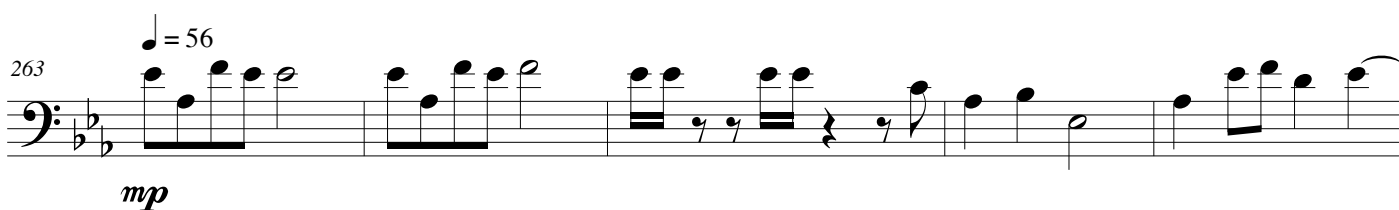
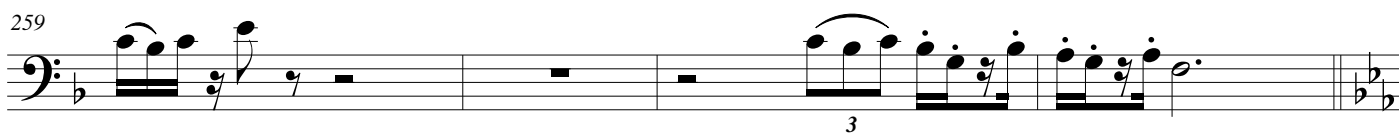
2



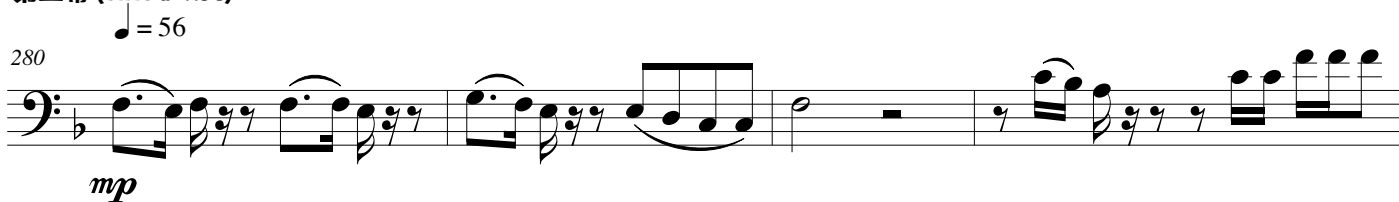
♩ = 80

5

 mf

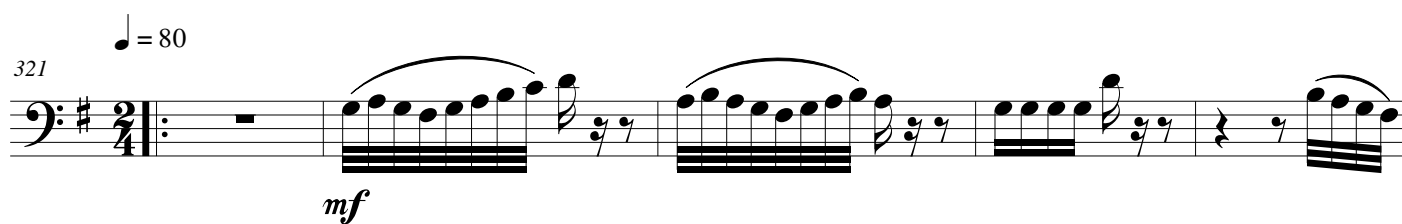
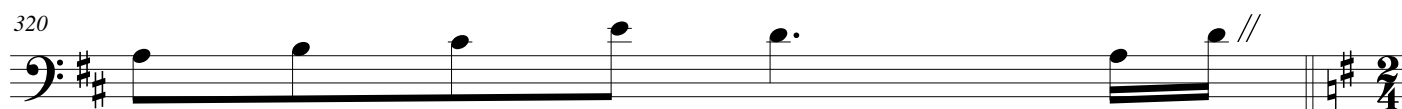
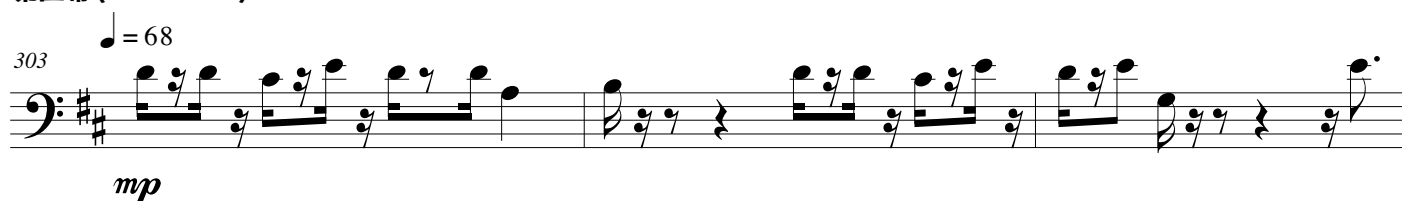


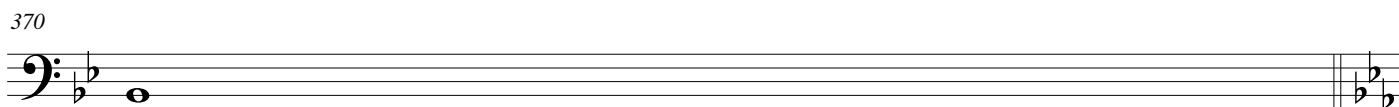
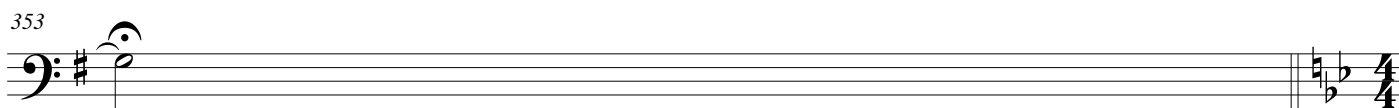
第三幕 (Third Act)





第四幕 (Fourth Act)





♩ = 56

371



375



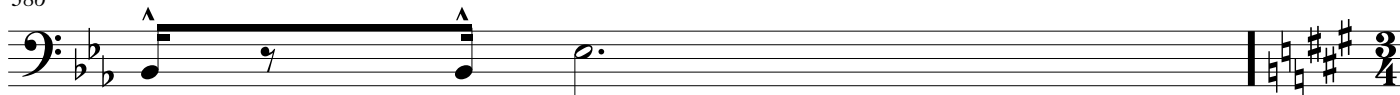
379



382



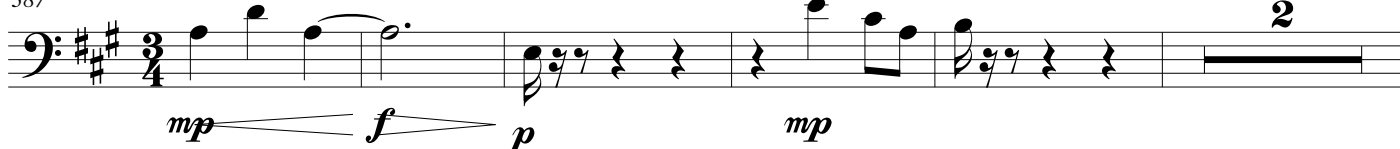
386



第五幕 (Fifth Act)

♩ = 76

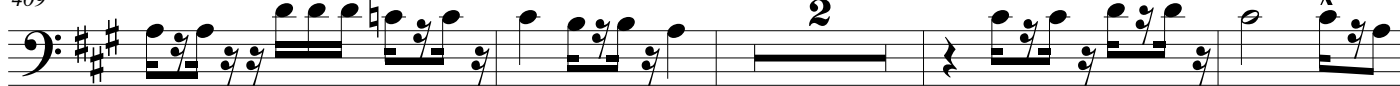
387



394



409



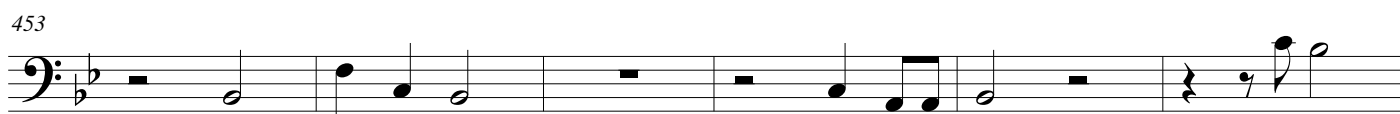
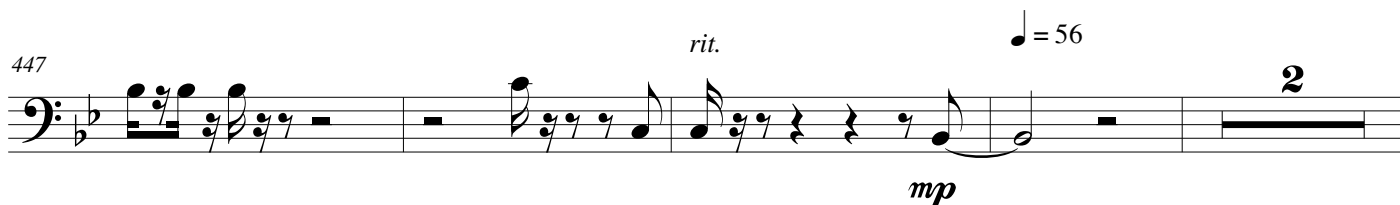
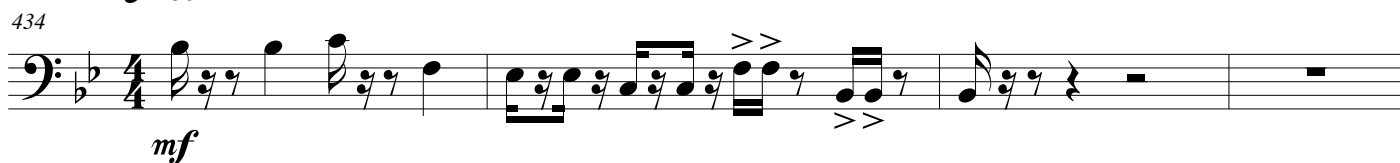
415





第六幕 (Sixth Act)

♩ = 80



願他的口與我親嘴，因你的愛情比酒更美。

*Let him kiss me with the kisses of his mouth
for your love is more delightful than wine. Song of Songs*