

Aurelio VIRGILIANO

(around 1600)

Ricercata 3 from Il Dolcimelo

Transcribed in modern notation for Violin

### **Notes for Ricercata 3**

(page 28 of manuscript)

#### *- Time signature:*

The time signature of the piece is alla breve in the manuscript, and measures are delimited by means of a dot under the staff, approximately in the first half and at the very end of the piece. In contrast, in the middle section of the piece Virgiliano did not indicate any measure delimitation.

#### *Two versions of Ricercata 3 are proposed:*

##### *- The first version*

is an attempt to stay as close as possible to the manuscript, without bars. The objective is to approach the grouping of notes as written by Virgiliano, which might help to decide on interpretation.

##### *- The second version*

is more conventional, with bars corresponding to the alla breve time signature. The following adaptation was made in Bar 123 to restore consistency with the time signature: the 6<sup>th</sup> note is a dotted quaver in the manuscript, and is followed by two semiquavers. It has been replaced in the transcription by a dotted crotchet, anticipating the next musical motive, which might have been Virgiliano's intention (?).

# Il Dolcimelo

## Ricercata 2

*Aurelio Virgiliano (around 1600)*

The image displays a musical score for a piece titled "Il Dolcimelo, Ricercata 2" by Aurelio Virgiliano, dated around 1600. The score is written on ten staves, each beginning with a treble clef. The notation is in a historical style, featuring various note values including minims, crotchets, and quavers, as well as rests. The key signature is one sharp (F#), and the time signature is common time (C). The music is characterized by its intricate, flowing lines and the use of ligatures, particularly in the later staves. The overall structure is a single melodic line, typical of a lute or keyboard solo.





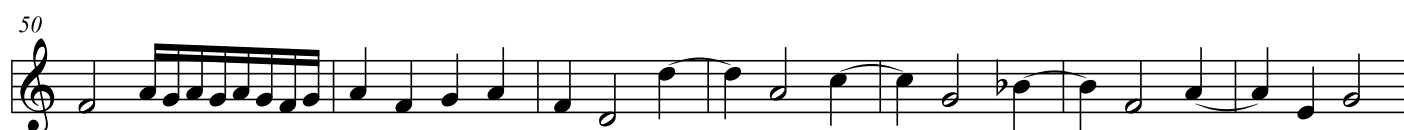


# Il Dolcimelo

## Ricercata 3 (p.28)

Ricercata per Flauto  
et ogni altro strumento

*Aurelio Virgiliano (around 1600)*



70

76

80

84

89

95

100

105

110

115



120

125

131

136

141

146

150

154

159

163

Detailed description: This image shows ten staves of musical notation, numbered 120 through 163. Each staff begins with a treble clef. The notation consists of various note values including quarter, eighth, and sixteenth notes, often beamed together in groups. Some staves include rests. The key signature is not explicitly shown, but the notes are mostly natural. The staves are arranged vertically, with the measure numbers 120, 125, 131, 136, 141, 146, 150, 154, 159, and 163 placed at the beginning of each line.