

# CONCERTO DA PONTE

## 4 Violini II.

**Allegro vivace** ♩ = 152

**Beischer-Matyó Tamás**

col legno

*p*

9

15 (col legno) *p* pizz.

21 col legno *mf* in modo ord. *pp*

28 *p* *mf* *f* pizz.

36 arco non div. *ff*

42 *p* *pp* 2

48 *poco sost. a tempo*

*f* *p* *pizz.* *arco* *f*

52 *a tempo*

*p* *pizz.* *p* *f* *p* *p*

57

*pp* *sul pont.* *pp* *in modo ord.* *sul pont.* *pp*

63

*ff espr.*

76

*accelerando poco a poco*

80

*(accelerando poco a poco)*

84

*ff* *3* *p* *ff* *3* *p*

88

div. 2+2

*ff* *p* *ff* *p* *ff* *ppp* *f*

93

div. 2+2

*ppp* *f* *p*

sub. *ppp*

99 pizz. 3

*f* *f marcato*

108 arco sul pont.

*pp*

117 in modo ord.

tutti pizz. *p*

128

134

*f* *mf* *p*

140 *fff*

145 *p* *f* *f* *p* *arco*

151 *pizz.*

156 *rall.*

163 *a tempo*  $\text{♩} = 120$  *arco* *p dolce* *poco rall.*

168 *a tempo, poco quieto* *pp*

172

176 *poco rall.* *pizz.* *p*

182 *a tempo, poco quieto* *rall.* *(pizz.)* *pp*

**Molto vivace** ♩ = 168

197 *arco sul pont.* *pp sempre*

div. 2+2

*arco sul pont.* *pp sempre*

209

div. 2+2

215

div. 2+2

222 *via sord.*

div. 2+2

*via sord.*

(senza sord.) *pizz.*

227 *f* (senza sord.) *pizz.* *f*

div. 2+2

238

div. 2+2

## 4 Violini II.

6

245 *arco* *sul G* *f espr.* *3* *3*

252 *ff*

258 *3* *5*

266 *Allegro vivace*  $\text{♩} = 152$  *10* *2* *3/4* *4* *2* *3/4*

282 (senza sord.) in modo ord. *p* *f* *p* *f* *p* *f* *p* *f* *3*

290 *p* *f* *p* *f* *non div.* *fff*

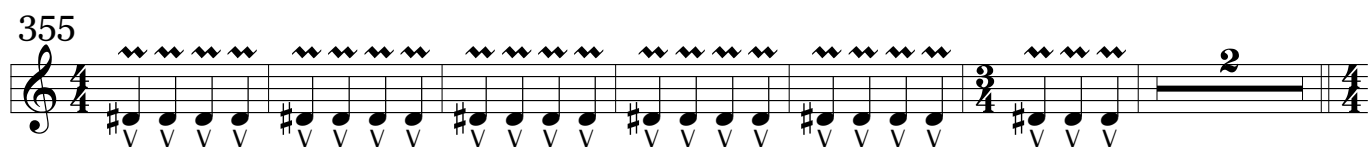
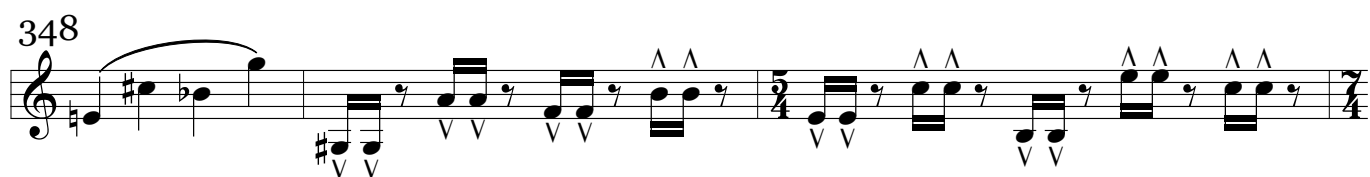
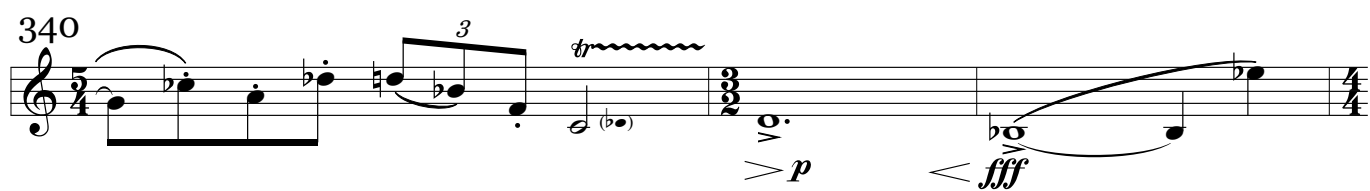
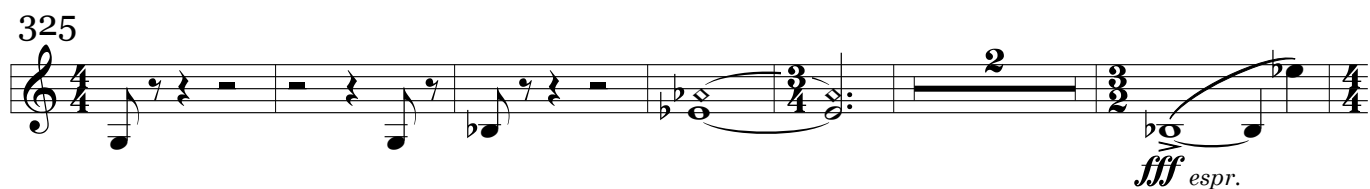
296 *5*

299 *5* *5* *5*

302 *6* *6* *6* *6* *6* *3* *passionato*

305 *3* *3* *sub. ppp*

310 *3* *3* *3* *3*



**Molto vivace** ♩ = 168

363

div. 2+2

*pppp*

377

div. 2+2

14

14

401

uniti

*pppp*

*rall. molto* ----- *al cca.:* ♩ = 52 - 60

**CADENZA**

409

**Molto lento e misterioso** ♩ = 52

410

con sord.

*ppp*

*ppp*

*ppp*

*ppp*

div. 1+ 1+ 1+ 1



415

div.  
1+  
1+  
1+  
1

419

div.  
1+  
1+  
1+  
1

**Molto vivace** ♩ = 168

425

div.  
1+  
1+  
1+  
1

via sord.

2

## 4 Violini II.

10

432 *pizz.* *arco* *3* *f* *p* *f* *p* *f* *p*

438 *f* *ff*

450 *fff* *p*

454 *fff* *p* *fff*

458

460

462

464

466

468

471

474

477

482

492

*p*

*pizz.*

*pp*

2

4

4

The musical score for Violini II, measures 468-492, is presented in six systems. Measures 468-473 are a continuous sixteenth-note pattern. Measures 474-476 continue this pattern. Measure 477 concludes the pattern with a double bar line and a fermata marked '2'. Measures 482-491 are a continuous sixteenth-note pattern. Measure 492 begins with a pizzicato instruction, followed by a quarter note and a fermata marked '4'. The score is written in treble clef with a key signature of one flat.