

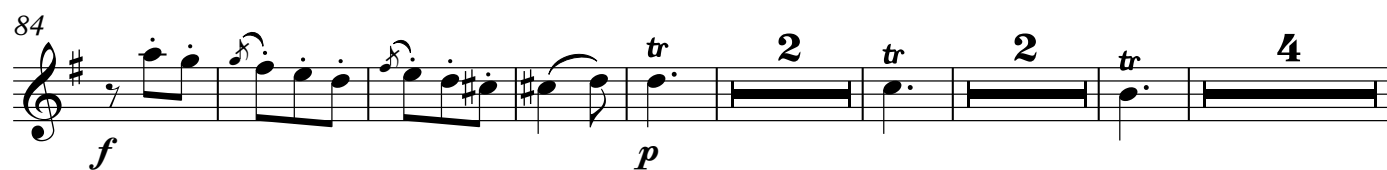
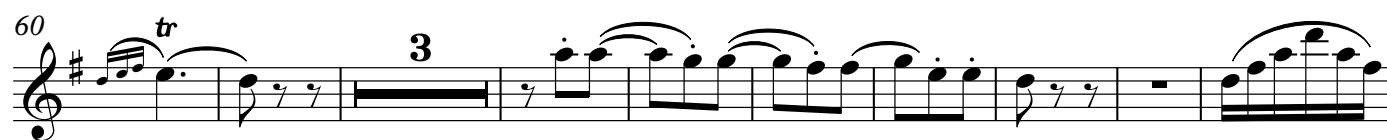
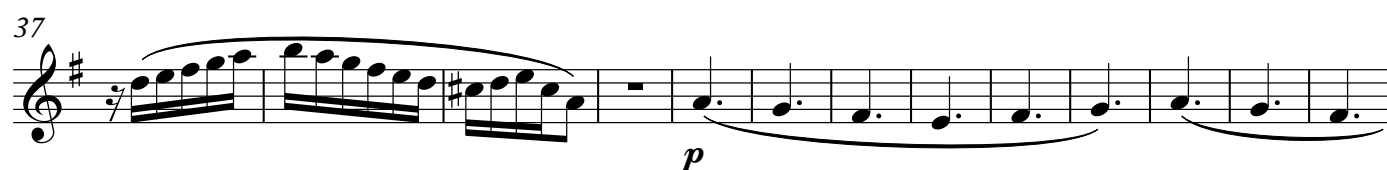
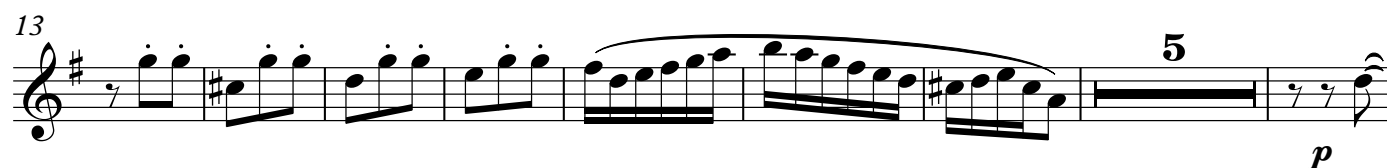
Violin I

Soler Flair

1.

Soler/Johnson

Allegro



Violin I

99

Violin I

f

109

tr

3

120

tr

2

130

3

p

2

142

f

151

tr

3

159

2.

165

Allegro)♩=104)

f

170

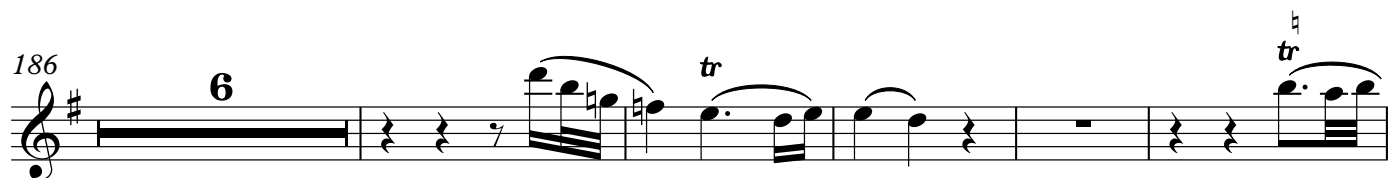
175

p

3

Violin I

3



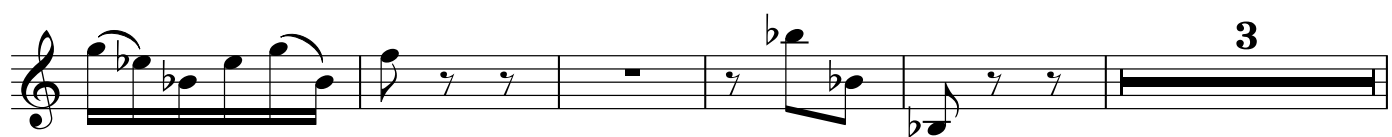
Violin I

Violin I

Violin I musical score, first system. The music is in G major (one sharp) and 4/4 time. It begins with a whole rest, followed by a trill (tr) on G4. The melody continues with eighth and sixteenth notes, including another trill on G4. The system concludes with a double bar line and a key signature change to A major (two sharps).

3.

Violin I musical score, second system. The tempo is marked *Allegretto* (♩ = 82). The key signature changes to A major (two sharps) and the time signature changes to 3/4. The music begins with a whole rest, followed by a half note G4. The melody continues with eighth and sixteenth notes, including a trill (tr) on G4. The system concludes with a double bar line and a key signature change to A major (two sharps).



Violin I

Violin I

Violin I musical score, measures 1-12. The music is in treble clef, 2/4 time, and D major. It features a series of eighth-note patterns, including slurs, ties, and a triplet in measure 10. The piece concludes with a trill (tr) in measure 12.

4.

Allegro non tanto (♩=108)

Violin I musical score, measures 13-20. The music is in treble clef, 6/8 time, and D major. It begins with a forte (f) dynamic. The score includes various eighth-note patterns, slurs, ties, and a triplet in measure 19. The piece ends with a repeat sign in measure 20.



This page of a Violin I musical score contains ten staves of music. The notation includes various musical symbols such as treble clefs, key signatures (one sharp and one flat), time signatures (4, 5, and 3), and dynamic markings (*p* for piano and *f* for forte). The music features a variety of note values, including eighth, sixteenth, and thirty-second notes, as well as rests and slurs. The first staff begins with a 4-measure rest. The second and fourth staves are marked with *p* and *f* dynamics. The fifth staff contains a repeat sign. The sixth staff has a 4-measure rest. The seventh staff begins with a 5-measure rest. The eighth staff is marked with *p*. The ninth staff is marked with *f*. The tenth staff ends with a 3-measure rest.

4

p *f*

4

p *f*

4

5

p

f

3

Violin I

The image displays a musical score for a single melodic line, likely for a piano or guitar, in the key of B-flat major (two flats) and 3/4 time. The score is organized into six horizontal staves. The notation includes eighth notes, quarter notes, half notes, and rests. Some measures contain fingerings: a '2' in the first staff, a '6' in the second staff, and a '2' in the third staff. The score concludes with a repeat sign (double bar line with two dots) in the final measure of the sixth staff.