

Concerto Grosso para Harpa e Cordas

Mvt. 1

Dedicada ao meu grande amigo Jardel Leonel

Wenyo de Oliveira Aragão da Silva

$\text{♩} = 100$

Violoncello

mf

5

Vlc.

9

Vlc.

p *mf*

14

Vlc.

17

Vlc.

20

Vlc.

24

Vlc.

3

29

Vlc.

p *f*

38

Vlc.

43

Vlc.

47

Vlc.

13

ff

63

Vlc.

f

66

Vlc.

70

Vlc.

74

Vlc.

77

Vlc.

ff

81

Vlc.

83

Vlc.

87

Vlc.

mf

91

Vlc.

95

Vlc.

mp

p

102

Vlc.

mf

pp

114

Vlc.

f

ff

121

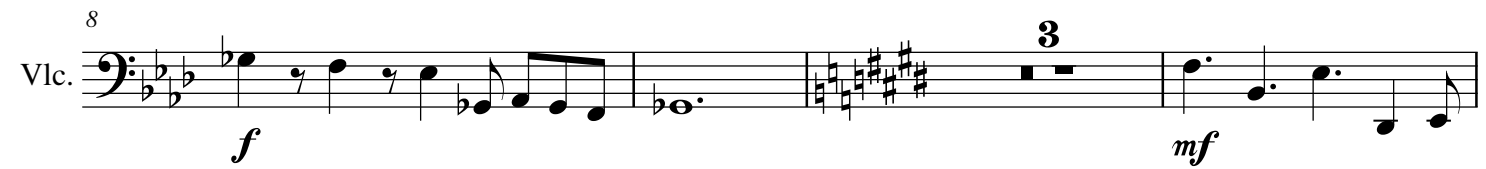
Vlc.

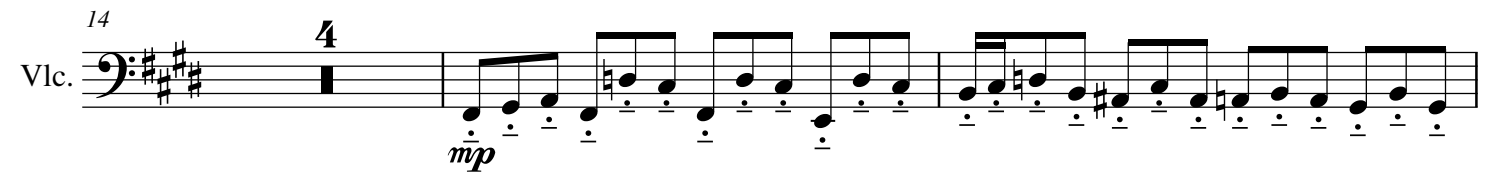
Mvt. 2

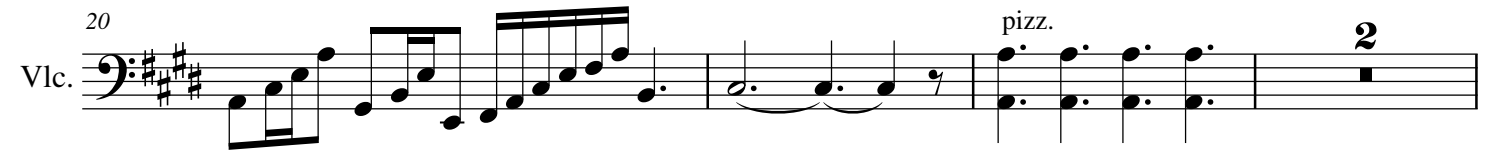
♩. = 38

Violoncello 

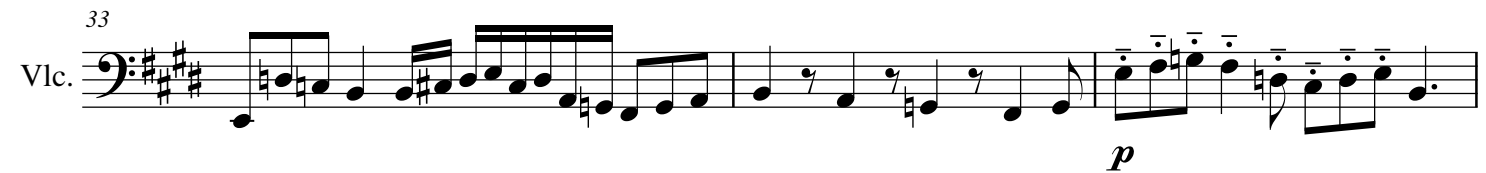
Vlc. 

Vlc. 

Vlc. 

Vlc. 

Vlc. 

Vlc. 

Vlc. 

41

Vlc.

44

Vlc.

mf

47

Vlc.

3

Mvt 3

 $\text{♩} = 130$

Violoncello

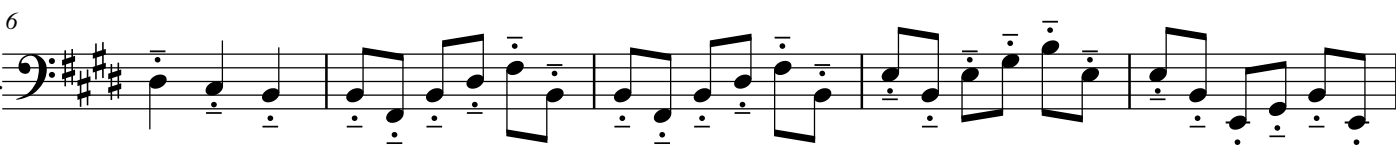


ff

First staff of music for Violoncello, measures 1-5. The key signature is three sharps (F#, C#, G#) and the time signature is 3/4. The music features a series of eighth and sixteenth notes, mostly beamed together, with some accents.

6

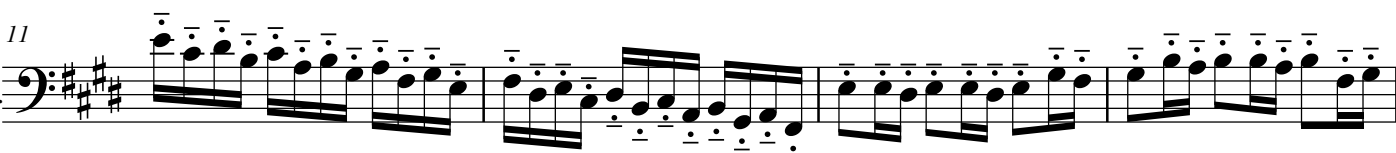
Vlc.



Second staff of music for Violoncello, measures 6-10. The music continues with eighth and sixteenth notes, maintaining the rhythmic intensity.

11

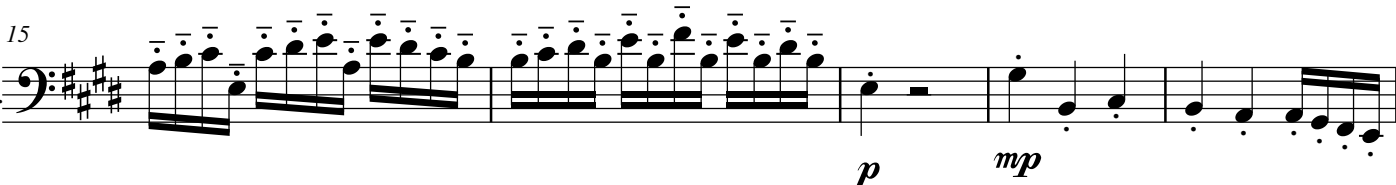
Vlc.



Third staff of music for Violoncello, measures 11-14. The music features a dense texture of beamed eighth and sixteenth notes.

15

Vlc.



Fourth staff of music for Violoncello, measures 15-19. The music features a dense texture of beamed eighth and sixteenth notes. Dynamic markings *p* and *mp* are present below the staff.

20

Vlc.



Fifth staff of music for Violoncello, measures 20-23. The music continues with eighth and sixteenth notes, showing some melodic movement.

24

Vlc.



Sixth staff of music for Violoncello, measures 24-27. The music features a dense texture of beamed eighth and sixteenth notes. Dynamic marking *ff* is present below the staff.

28

Vlc.



Seventh staff of music for Violoncello, measures 28-30. The music continues with eighth and sixteenth notes, showing some melodic movement.

31

Vlc.



Eighth staff of music for Violoncello, measures 31-35. The music features a dense texture of beamed eighth and sixteenth notes. A measure rest for 8 measures is indicated above the staff.



113 $\text{♩} = 130$

Vlc. *ppp* *ff*

119

Vlc.

124

Vlc.

128

Vlc.

132

Vlc. *p* *mp*

137

Vlc.

141

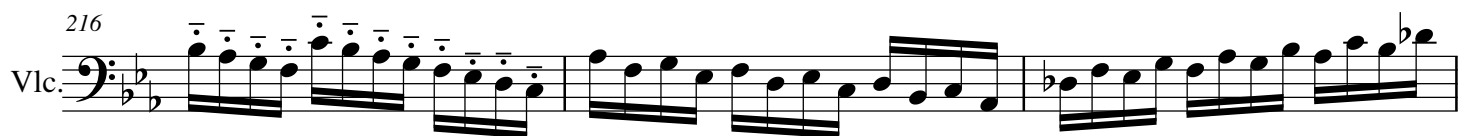
Vlc. *ff*

145

Vlc.

149

Vlc. 4



219

Vlc.

The musical score for Violoncello (Vlc.) begins at measure 219. The key signature is B-flat major (two flats) and the time signature is 4/4. The notation consists of a single staff with a bass clef. The first six measures contain eighth-note patterns: measures 1-2 have eighth notes on G2, F2, E2, D2; measures 3-4 have eighth notes on C2, B1, A1, G1; measures 5-6 have eighth notes on F1, E1, D1, C1. The final three measures (221-223) each contain a dotted half note: G1 in measure 221, F1 in measure 222, and E1 in measure 223, with a fermata over the final note.