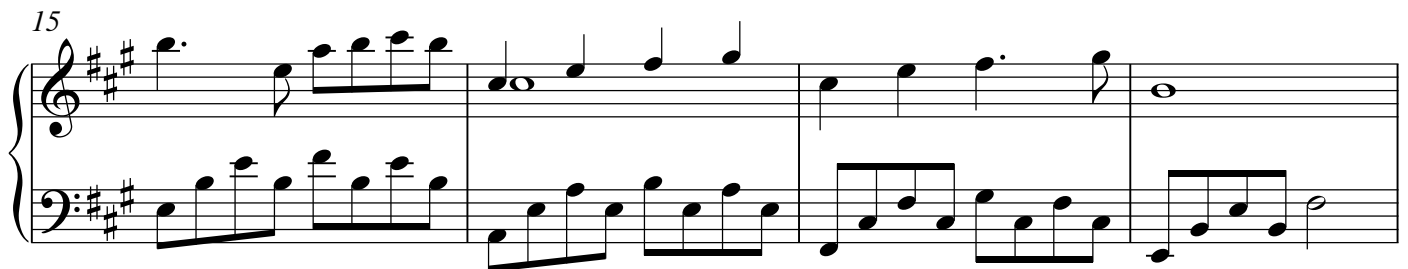
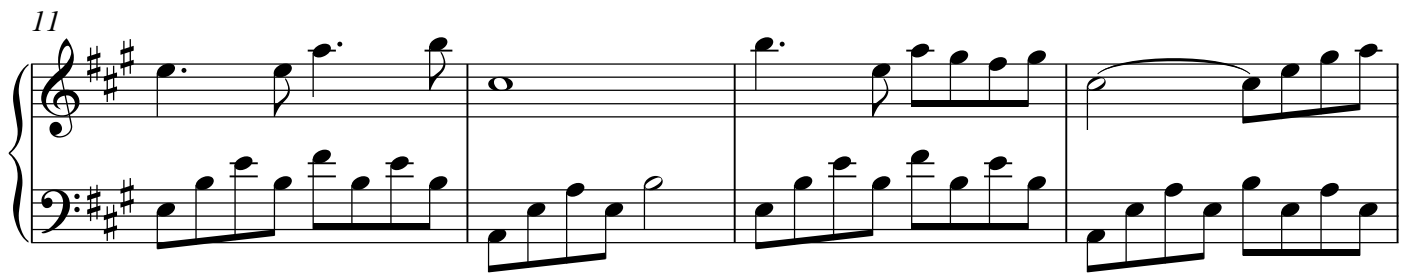
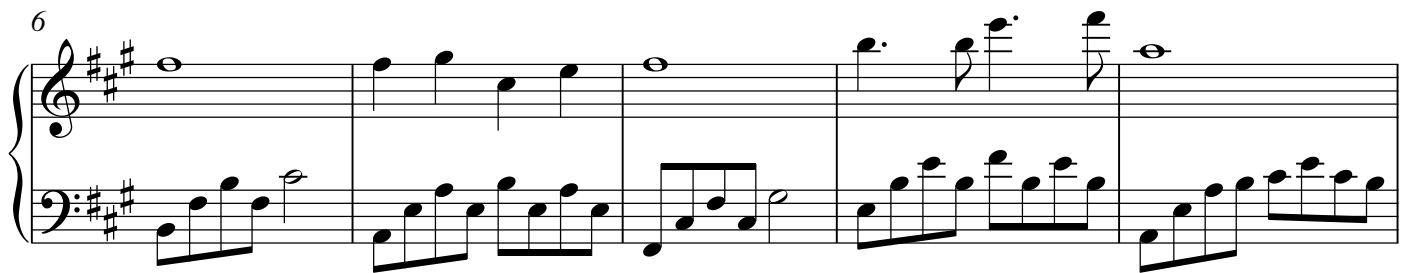
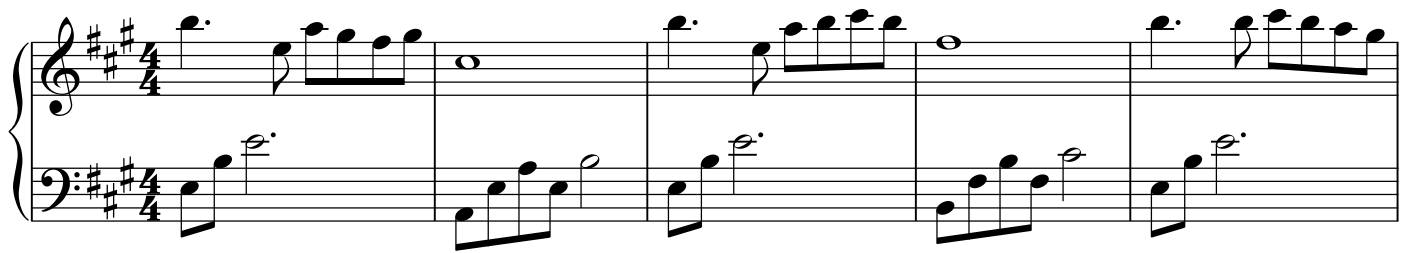


Will You Ever Be Mine

Kevin Pearson



27

32

36

41

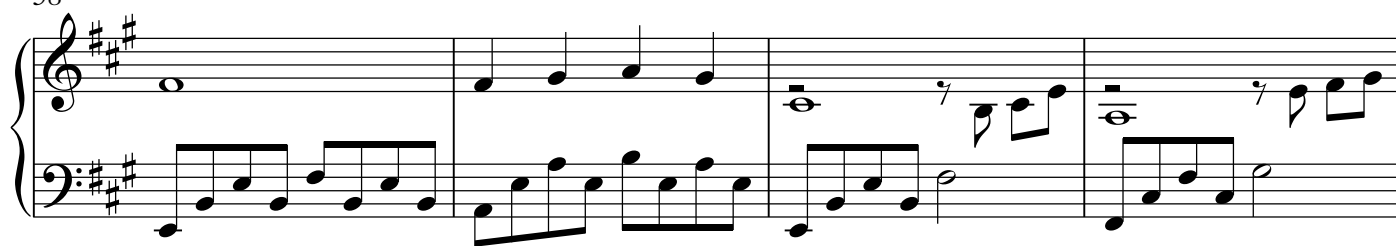
46

50

54

This page contains seven systems of musical notation, each consisting of a grand staff (treble and bass clefs) in the key of A major (three sharps). The systems are numbered 27 through 54. The notation includes various musical symbols such as notes, rests, and accidentals. The first system (measures 27-31) features a melodic line in the treble and a rhythmic accompaniment in the bass. The second system (measures 32-35) continues the melodic and rhythmic patterns. The third system (measures 36-40) introduces a new melodic phrase. The fourth system (measures 41-45) features a more complex melodic line. The fifth system (measures 46-49) continues the melodic and rhythmic patterns. The sixth system (measures 50-53) features a new melodic phrase. The seventh system (measures 54-57) concludes the page with a final melodic and rhythmic phrase.

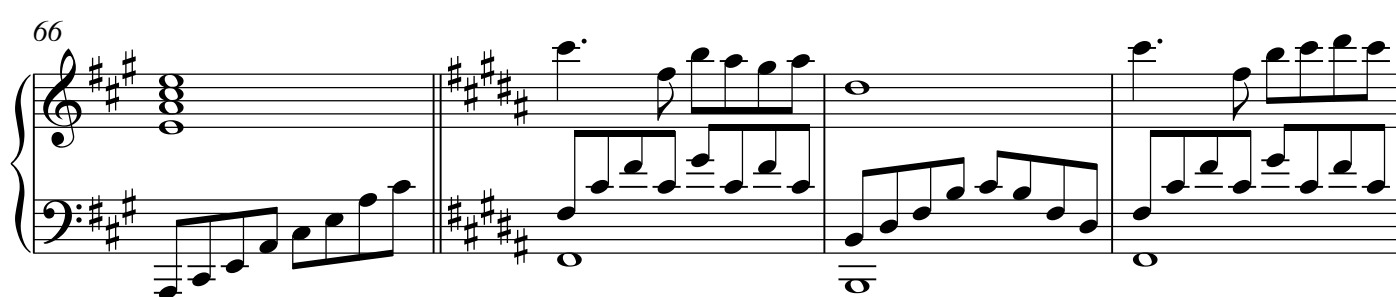
58



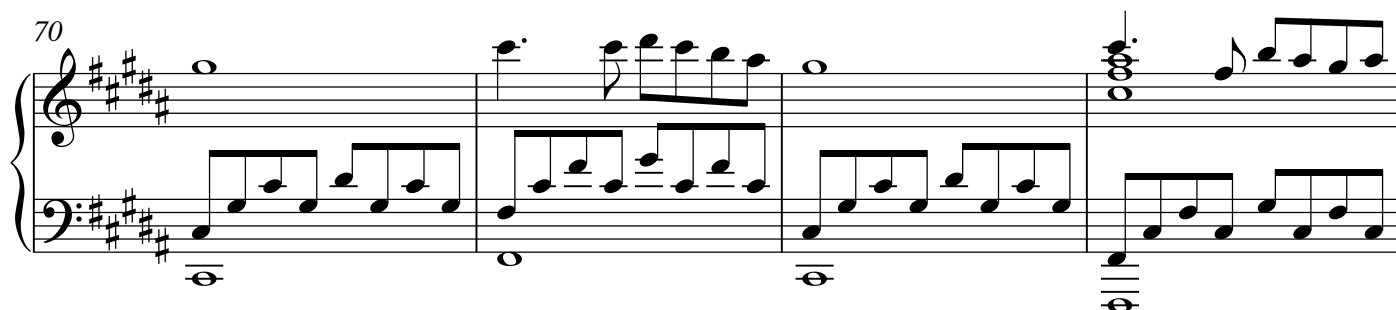
62



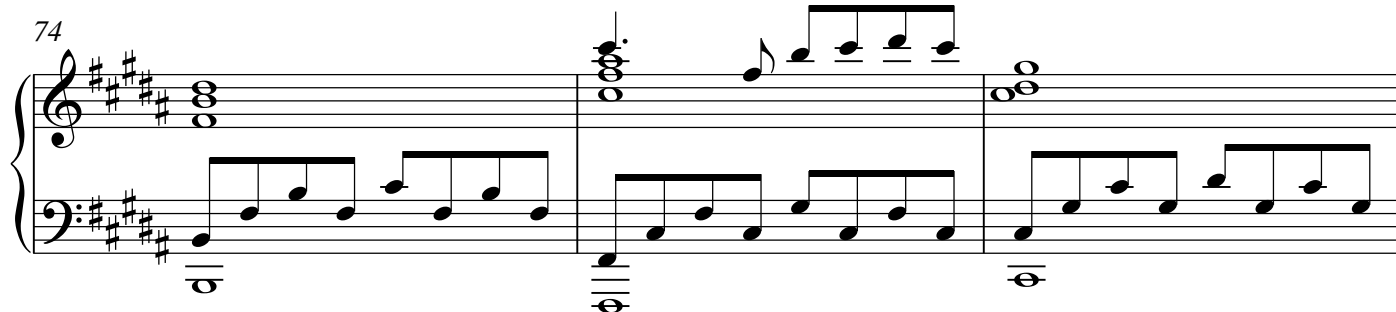
66



70



74



77

