

Oboe 1

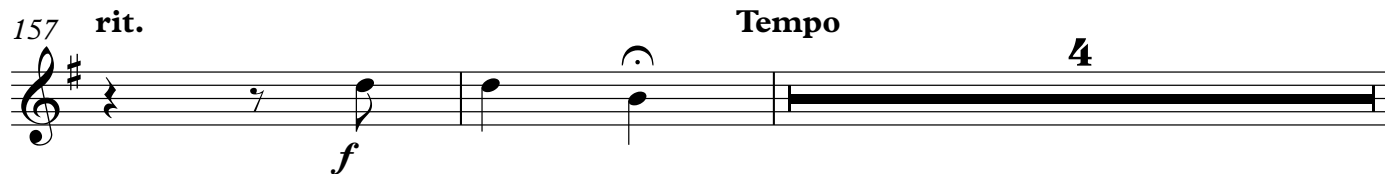
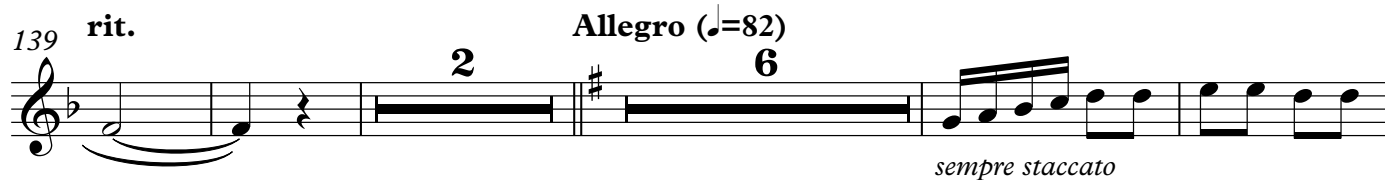
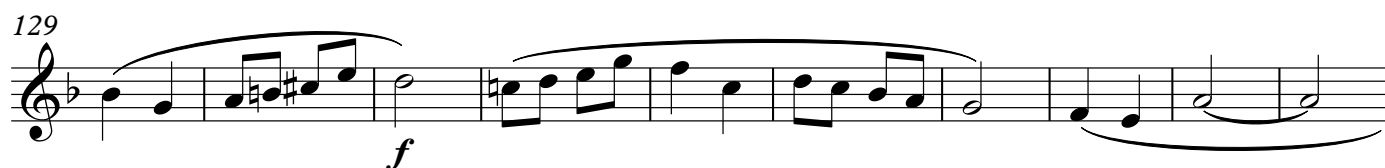
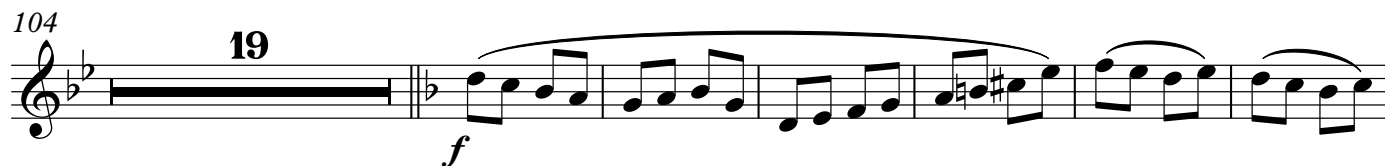
A French Christmas

(Four Carols)

Johnson

Allegretto (♩=106)

70



163 *f* **2** *pp* **3** *rit.* *p*

173 **Tempo** *f* *p*

180 *ff* *rit.* **Tempo** *f*

198 *rit.* **Allegretto** (♩=106) *f*

206 **4**

215 *a2*

221 1. 2.

228 *p*

236 **2**

245

Measures 245-250: Measure 245 is in B-flat major, 3/4 time, starting with a forte (*f*) dynamic. It contains eighth-note pairs (B-flat, A) and (G, F) with a half rest. Measure 246 is a repeat sign. Measure 247 is in D major, 6/8 time, starting with a fortissimo (*ff*) dynamic, containing eighth-note pairs (D, C#) and (B, A). Measure 248 is a repeat sign. Measure 249 is in D major, 9/8 time, containing eighth-note pairs (D, C#) and (B, A). Measure 250 is in 3/4 time, containing a half note D and a quarter rest.

251

Measures 251-256: Measure 251 is in D major, 6/8 time, containing eighth-note pairs (D, C#) and (B, A). Measure 252 is in 2/4 time, containing a half note D and a quarter rest. Measure 253 is in D major, 6/8 time, containing eighth-note pairs (D, C#) and (B, A). Measure 254 is in 2/4 time, containing a half note D and a quarter rest. Measure 255 is in D major, 6/8 time, containing eighth-note pairs (D, C#) and (B, A). Measure 256 is in 2/4 time, containing a half note D and a quarter rest.

258

Measures 258-262: Measure 258 is in D major, 9/8 time, containing eighth-note pairs (D, C#) and (B, A). Measure 259 is in 2/4 time, containing a half note D and a quarter rest. Measure 260 is in D major, 6/8 time, containing eighth-note pairs (D, C#) and (B, A). Measure 261 is in 2/4 time, containing a half note D and a quarter rest. Measure 262 is in D major, 2/4 time, containing a half note D with a fermata and a quarter rest.

Oboe 2

A French Christmas

(Four Carols)

Johnson

Allegretto (♩=106) **rit.**

87 2

91 **Adagio**

8 20

mf

123

8 4

f

139 **rit.** **Allegro** (♩=82)

4 6

sempre staccato

152

pp

157 **rit.** **Tempo**

4 2

f *f* *pp*

168 **rit.** **Tempo**

3 8

p *f*

185 **rit.** **Tempo**

5 5

ff *f*

198 **rit.** **Allegretto** (♩=106)

f

210

216

223

229

247

ff

253

259

English Horn

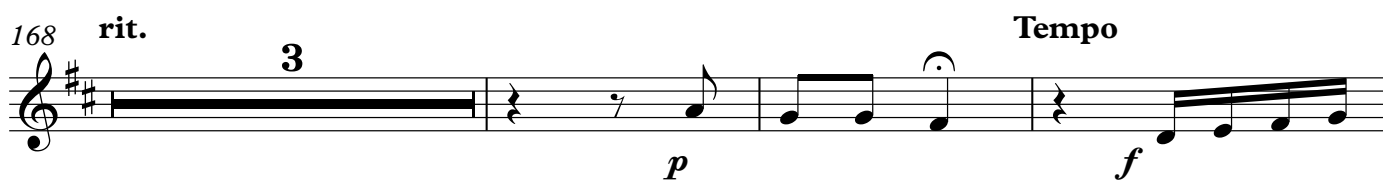
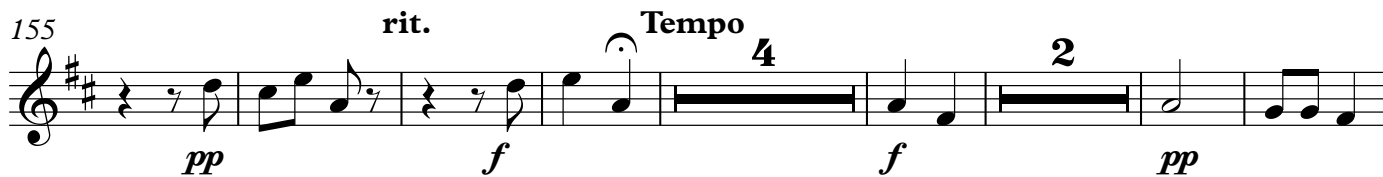
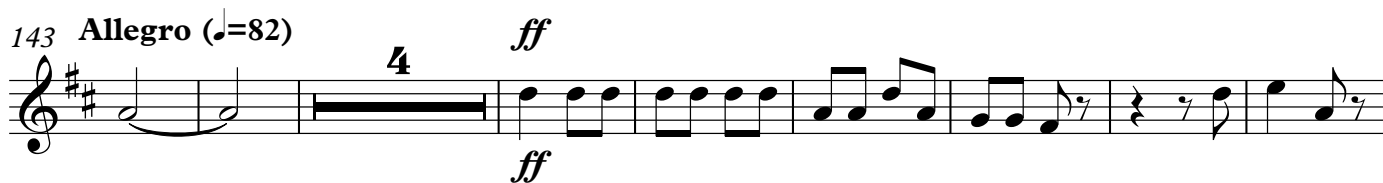
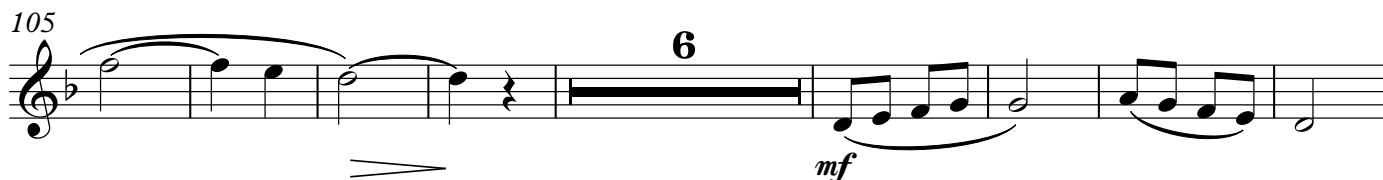
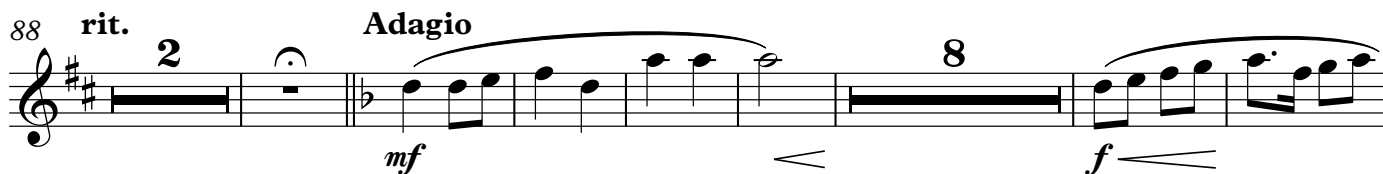
A French Christmas

(Four Carols)

Johnson

Allegretto (♩=106)

70



English Horn

185 **rit.** **Tempo**

198 **2** **rit.** **Allegretto** (♩=106)

206 **4**

216

223

229 **2** **p**

239 **f**

247 **ff**

253

258

6

Detailed description: This is the first system of a musical score, spanning measures 185 to 258. The music is written on a single staff in treble clef with a key signature of two sharps (F# and C#). The tempo and dynamics markings are as follows: Measure 185: **rit.** (ritardando), **Tempo** (tempo marking). Measure 198: **2** (time signature change to 2/4), **rit.** (ritardando), **Allegretto** (tempo marking), (♩=106) (quarter note equals 106 beats per minute). Measure 206: **4** (time signature change to 4/4). Measure 229: **2** (time signature change to 2/4), **p** (piano). Measure 239: **f** (forte). Measure 247: **ff** (fortissimo). The score includes various musical notations such as rests, eighth notes, quarter notes, and half notes, as well as dynamic markings like **ff**, **f**, **p**, and **ff**. The system concludes with a double bar line at measure 258.