

D E T  
K G L  
  
B I B  
L I O  
T E K

VIOLA

# PETER HEISE

OUVERTURE TIL "MARSK STIG"

'MARSK STIG' OVERTURE

KØBENHAVN 2010



DANSK CENTER FOR MUSIKUDGIVELSE

Viola

OUVERTURE TIL  
"MARSK STIG"

'MARSHAL STIG'  
OVERTURE

Andante

8

14 **A**

20

26 trem.

31 **B**

38

45 **C**

*mf* *mf* *f* *f*

*p* *mf*

*p* *p* *fp* *dim.* *f*

*p* *p* *fp* *crescendo*

*ff* *ff* *pp*

*f* *p* *fp*

*sempre cresc.* *f*

*f* *div. rit.*

Viola

51 **D** Allegro molto

unis.  
*pp*

57  
*sfpp* *sfpp* *sfpp* *p*

62  
*mf*

68

74  
*sempre cresc.*

80  
*f*

85 **E**

91  
*p*

97  
*f* *p*

104  
*f* 3

Viola

113

*p*

119

125 **F**

*ff*

134

144 **G**

*p*

152

*pp*

158

*f cresc.*

165

*ff*

*dim.*

175 **H**

*p*

180

*simile*

186

*f*

192

*p*

198

Viola

204

210

216

222

228

234

239

245

251

258

263

270

*ff*

*div.*

*unis.*

*p*

*simile*

*mf*

*f*

*sf*

*f*

*ff*

*p*

*p*

*p*

5

7

I

Viola

288 **K**

*ff*

296

305

313

*ff*

*ff*

321

*ff*

328

*ff*

335

*p*

*cresc.*

343

*p*

352

358

*cresc.*

*sf*

364

370 **L**

*f p*

Viola

377

383

390

396 **M**

402

407

416 **N**

422

428

434

440

446

*p*

*f*

*dim.*

*p*

*f*

*cresc.*

# Viola

452 *ff*

458

463

468 **O** *mf*

474 *mf*

480 *f*

486 *sf*

491 *sf* *cresc.* *f*

496 *f*

502 *f* **P** *p*

508 *p*

515 4 5

The musical score for Viola spans measures 452 to 515. It begins with a series of triplets in measures 452-463, marked *ff*. Measure 468 contains a vocal entry marked **O** and *mf*. Measures 474-480 continue with triplets and a crescendo leading to *f*. Measures 486-491 feature triplets and a *sf* (sforzando) dynamic. Measure 496 has a *f* dynamic. Measure 502 shows a *f* dynamic followed by a piano (*p*) section marked **P**. Measure 508 is marked *p*. Measure 515 includes a 4-measure rest and a 5-measure rest, both marked with a wedge and a number (4 and 5 respectively).

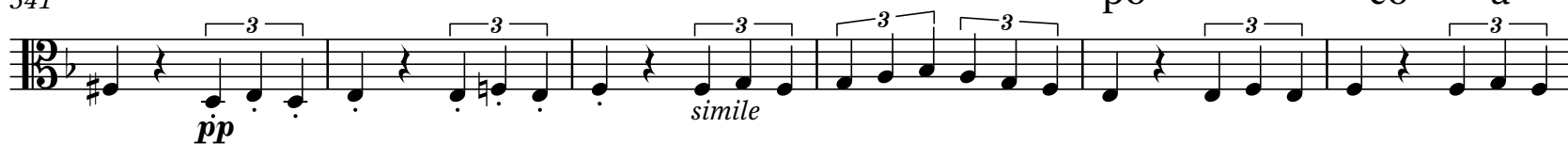


## Viola

529



541



547



553



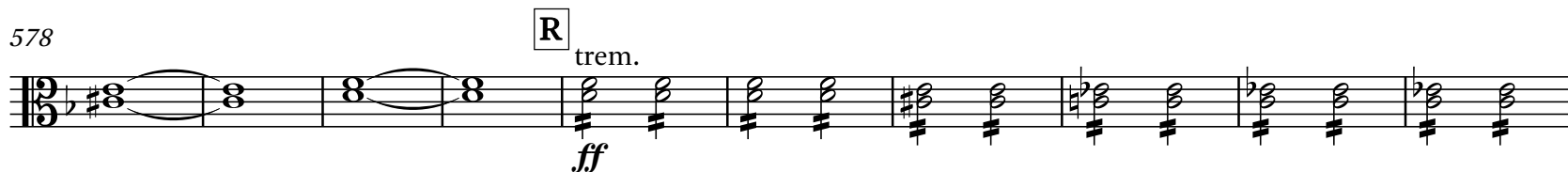
558 [Q] Prestissimo



568



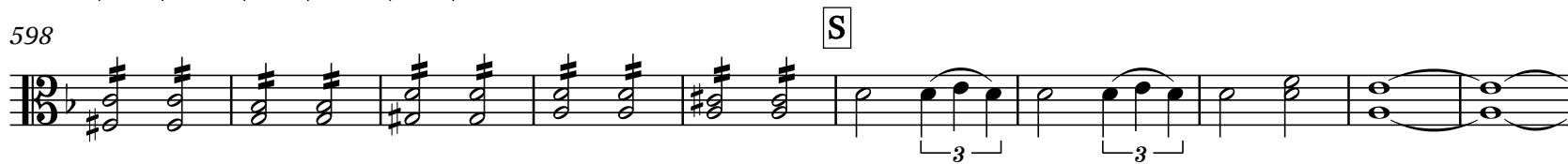
578



588



598



608



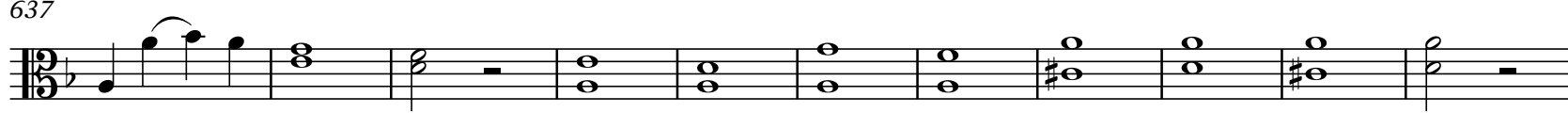
619



628



637



648

