

Violoncello

Suite Vocalise

R. Teichmann

1. Andante piacevole (♩ = 104)

2

mp legato

8

pizz.

arco tremolo

p

fp

15

cresc.

21

pizz.

p

26

poco cresc.

31

arco

38

dimin.

42

p

con sord.

6



cresc. ----- *p sub.*

pizz.

arco

più p

♩ più lento

pp sostenuto

senza sord.

[illegible]

port.

pizz.

arco

accel., non cresc.

(♩=100)

più p *poco accel.*

p sul tasto

(normale)

Violoncello

3

28

3 3 3 3 3 3 3 3

(♩=100)

mp

33

decel. (♩=80)

4. Ostinato (♩=132)

6

pizz. *arco*

marc.

11

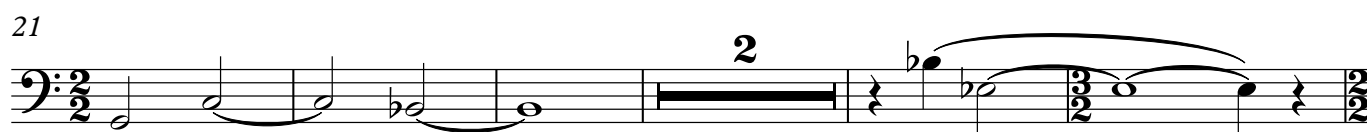
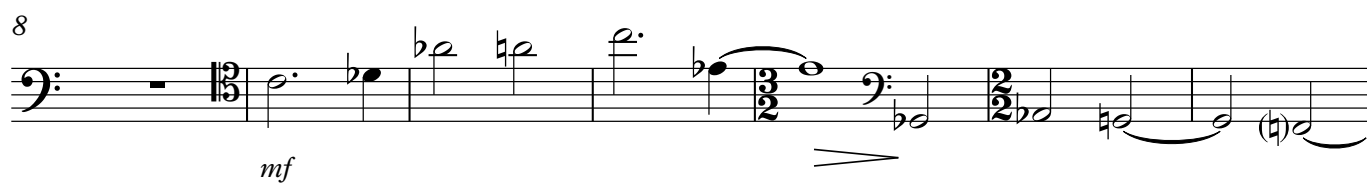
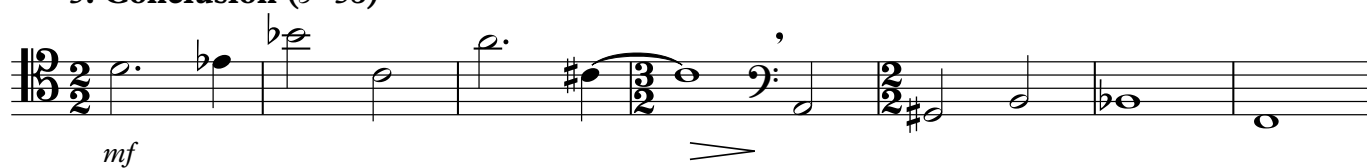
pizz. *arco*

p

15

p

5. Conclusion (♩=58)



28 Più mosso



44 , Lento

