

D7636
718
c.1

Wm. Ziegfeld Presents
The Musical Play

The Girl in the Kimona

VOCAL GEMS

C. Q. D, Help! I'm In Love,	60
Do You Believe In Flirting,	60
The Boogey Boo Lady,	60
The Bachelor And The Maid,	60
Only A Kiss,	60
The Diff'rence Of A Drink Or Two,	60
A Corner In My Heart,	60



Lyrics By
Harold R. Atteridge

Music By
Phil. Schwartz



4P

The Diff'rence Of A Drink Or Two.

Lyric by
HAROLD R. ATTERIDGE

Music by
PHIL. SCHWARTZ

Moderato

The world is such a dear old world, To -
My voice is flat and way off key, But
My good friend Jim once went to talk, And

day I thought it wrong; I wor - ried o - ver lit - tle things, Now
now I'd like to sing; Tho' I can't dance to save my life, I'd
ar - gue drink was wrong; He had a pro - hi - bi - tion speech, At

life is just a song. Can you i - mag - ine peace - ful Me, Now
do a High - land fling. I once could call for gin - ger ale, But
least a full mile long. He stepped in - to a bar - room there, To

Detailed description: The musical score is written for voice and piano. It begins with a 'Moderato' tempo marking. The key signature has one sharp (F#), and the time signature is common time (C). The vocal line starts with a rest, followed by the lyrics 'The world is such a dear old world, To - My voice is flat and way off key, But My good friend Jim once went to talk, And'. The piano accompaniment features chords and moving lines in both hands. Dynamics include *p* (piano) and *mf* (mezzo-forte). The score continues with two more verses of lyrics, each with corresponding musical notation.

do-ing as I did? I saw a flash-y blonde pass by And then said, "oh! you kid."
now just think, what sin, - I can pro-nounce one syl-la-ble, Just one - and that is "gin."
get his cour-age up, 'Twas down with drink al-ways with him, He liked his flow-ing cup.

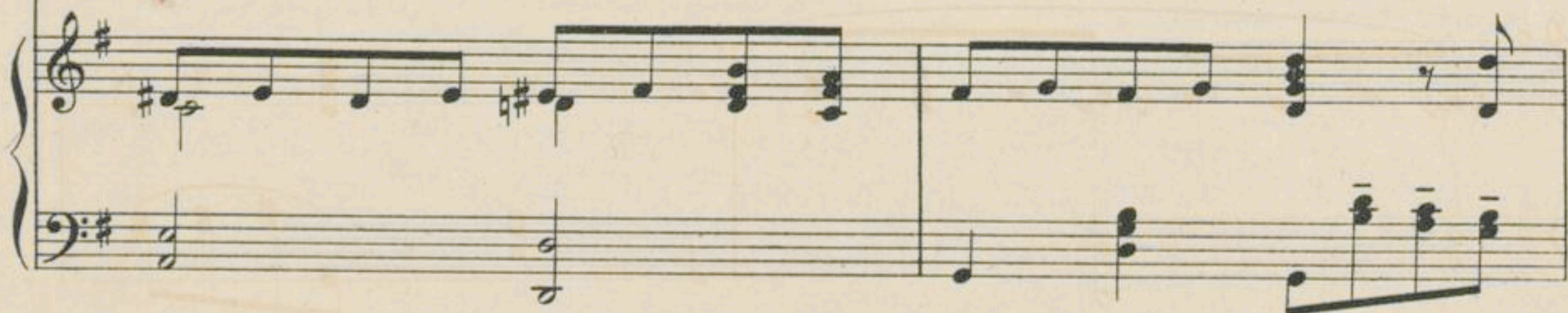


REFRAIN

Oh! it's on - ly just a diff'-rence of a drink or two; The
Oh! it's on - ly just a diff'-rence of a drink or two; The
Oh! it's on - ly just a diff'-rence of a drink or two; If



skies that once were gray and dark are now a ba-by blue; A
skies that once were gray and dark are now a ba-by blue; I
he had tried to make that speech by now he'd not be through; He



qui - et peace - ful feel - ing comes, that changes all the scene; My
have - n't got an en - e - my, and ev - 'ry once's my friend; And
thought the cit - y should be dry, but when it came to him; Oh!

debts are on - ly tri - fle things, the world is quite ser - ene. I've
if I had the mon - ey, why I do be - lieve I'd lend. I
that was quite a diff' - rent thing, so thought this wise old Jim. When

al - ways been a peace - ful man, I nev - er cared to fight; But
think I'm my own land - lord and a king up - on a throne; I'm
speech time came he could - n't e - ven say his lit - tle speech; And



Attractive Concert and Parlor Songs.

Concert Songs

- My Wife,** by Max Liebling
E minor (D to G) . . . Price 50c.
- Isola,** by Max Liebling
Eb (E to Gb) . . . Price 50c.
- The Sum of Life,** by Elsa Wyman Maxwell
F (F to F) . . . Price 50c.
- Bird of the Northern Hills,**
by Elsa Wyman Maxwell
E minor (B to E) . . . Price 50c.
- Violets,** by Roma
Soprano or Tenor: F (D to G) Pr. 50.
Mezzo Soprano or Bariton:
Eb (C to F) Price 50c.
Alto or Bass: Db (Ab to Eb) Pr. 50.
- In Woodland,** by Harry Bennett
High: G (D to G) . . . Price 50c.
Medium: Eb (Bb to Eb) " 50c.
Low: C (G to C) . . . " 50c.
- Until the End,** by Joel P. Corin
High: F (F to A) . . . Price 60c.
Medium: Eb (Eb to G) " 60c.
Low: D (D to F#) . . . " 60c.
- In the Land of To-Morrow,**
by Wm. Frederick Peters
Eb (D to G) . . . Price 60c.
- Sembrich Valse,** . . . by Isidore Luckstone
A (E to G#) . . . Price 75c.

Sacred Songs

- Beyond the Gates of Paradise,**
by Robert A. King
High: Db (Ab to Ab) Price 75c.
Medium: Bb (F to F) " 75c.
Medium: C (G to G) " 75c.
Low: G (D to D) . . . " 75c.
- Be Merciful to Me,** . . . by Stephen Adams
Eb (Bb to Eb) . . . Price 75c.
- O Golden Land of Peace,** by Rob't. A. King
High: G (G to A) . . . Price 75c.
Medium: Eb (Eb to F) " 75c.
Low: C (C to D) . . . " 75c.
- Beautiful Home of Paradise,**
by Rob't. A. King
High: C (G to G) . . . Price 75c.
Medium: Bb (F to F) " 75c.
Low: G (D to D) . . . " 75c.
- Ave Maria,** by Emile Karst
G (G to C) . . . Price 50c.
- Sweet Home of the Angels,**
by Rob't. A. King
High: C (E to G) . . . Price 75c.
Medium: Bb (D to F) " 75c.
Low: Ab (C to Eb) . . . " 75c.
- Star of the East,** . . . by Amanda Kennedy
F (E to F) . . . Price 50c.

"VIOLETS" By Roma

Andante.

Minore semplice.

a tempo. Oh vi - o-lets, sweet vi - o-lets, Your

ver-y heart is like my true love's eyes; Up -

Copyright by LEO. FEIST, New York.

"SUM OF LIFE" By ELSA WYMAN MAXWELL

Andante con espressione. *p*

A lit-tle smile,

pp *p* *p*

A lit-tle while, And then a tear with-in the eye,

pp *p* *p*

A lit-tle life, A lit-tle strife; A little love, and then good

Copyright by LEO. FEIST, New York.

PRACTICAL HINTS AND HELPS FOR PERFECTION IN SINGING

By Madame Luisa Cappiani.

The most remarkable work ever published to assist instructors and their pupils in the beautiful art of singing. Price, \$1.50 Net.

Parlor Songs

- Answer,** by A. G. Robyn
High: A (C to A) . . . Price 50c.
Medium: G (B to G) " 50c.
Low: F (A to F) . . . " 50c.
(With Violin, Cello or Cornet obligato)
Price 60c.
- Alpine Flower,** by J. B. Wekerlin
Eb (D to Bb) . . . Price 60c.
- Señora,** by Jos. S. Nathan
High: Eb (Eb to Ab) Price 60c.
Medium: D (D to G) " 60c.
Low: C (C to F) . . . " 60c.
- My Cavalier,** by Jos. S. Nathan
High: Eb (Eb to Ab) Price 60c.
Medium: D (D to G) . . . " 60c.
Low: C (C to F) . . . " 60c.
- Fulfilled,** by Alfred G. Robyn
High: G (D to G) . . . Price 50c.
Medium: F (C to F) . . . " 50c.
Low: Cb (Bb to Eb) . . . " 50c.
- Dream One Dream of Me,**
by A. G. Robyn
Low: C (C to E) . . . Price 50c.
High: Eb (Eb to G) . . . " 50c.
- Constancy,** by A. G. Robyn
G (D to G) . . . Price 50c.
- Magdaler,** by A. C. Eimer
Ab (D to Ab) . . . Price 60c.
- Thine,** by A. G. Robyn
Low: Eb (C to Eb) Price 50c.
(with Violin or Cello obligato) 60c.
High: G (E to G) . . . Price 50c.
(with Violin obligato) " 60c.
- True,** by A. G. Robyn
High: Eb (Eb to G) Price 50c.
Low: C (C to E) . . . " 50c.
- Stars the Night Adorning,**
by J. B. Wekerlin
Eb (Eb to G) . . . Price 60c.
- Laughing Eyes,** by Elsa Wyman Maxwell
Ab (C to Eb) . . . Price 60c.
- The King of the Winds,** by Frank David
High: Bb (C# to G) . . . Price 75c.
Medium: F (G# to D) " 75c.
Low: Eb (F# to C) . . . " 75c.
- The King of the Deep Am I,**
by W. C. Kreusch
Medium: Ab (Bb to F) Price 50c.
Low: F (G to D) . . . " 50c.
- Down in a Dungeon Cell,**
by W. C. Kreusch
Low: F (F to C) . . . Price 50c.

Complete Copies at all Music Stores or direct from the Publisher at one-half marked price.

Published by **LEO. FEIST** "Feist Building" 134 W. 37th St., **NEW YORK**