

Concerto stilizzato

paraphrase on a motif by Brahms

PARTE PRIMA: "CADENZA"

Adagio $\text{♩} = 60$ Cadenza Tamás Beischer-Matyó

22 25 3 30

ppp *ff* *ff*

PARTE SECONDA: "FORMA-SONATA"

poco rall. . . Poco sostenuto Allegro con brio $\text{♩} = 180$ ($\text{♩} = 60$)

35 40 50 60 65 80

ff *ff* *ff* *ff* *ff* *ff*

pp *p* *p*

p poco a poco cresc. . .

mf *mf* *f* *mf* *f*

f *f* *ff*

f *p* *f* *p* *p*

C. a. Hn. 1 Hn. 2

85 f f sf p 3 Tpt. 1-2 sfz sfz sfz ff

90 p open poco ritard.

Sostenuto $\text{♩} = 48$ ($\text{♩} = 144$)

allarg. - - - - -

95 ff grandioso

a tempo $\text{♩} = 60$ ($\text{♩} = 180$)

100 S. pno. Hp.

105 Fl., Cl., Bsn. f poco ritard.

a tempo poco ritard. a tempo 110 Bsn., Tbn. pp

115 f

120 B. cl., Vc. f espress. Hn. 1 mf f Hn. 1-2 mf f Hn. 4 f 3

125 f p mp mp 3

130

p *pp*

molto rall. a tempo

135 4

C. a., Tpt. 3 ten. ten. +Cl. 1

ff *p*

145

p *f*

rall. Meno allegro ♩ = 120 (senza rall.) accel. al ♩ = 180 (a tempo)

15

p

165

Fl., Cl. 1

mp *mf* *f*

170

Hn. 1-2

open

175

ff *ff*

180

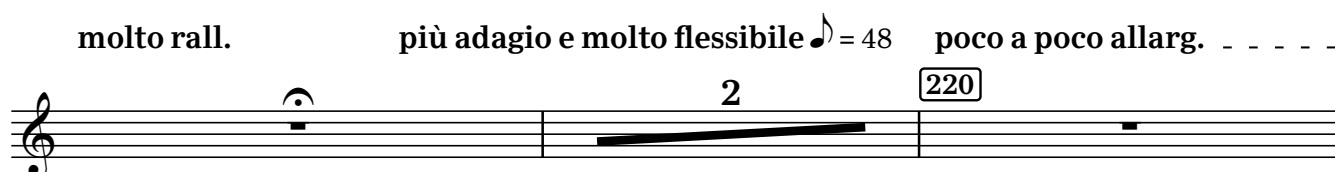
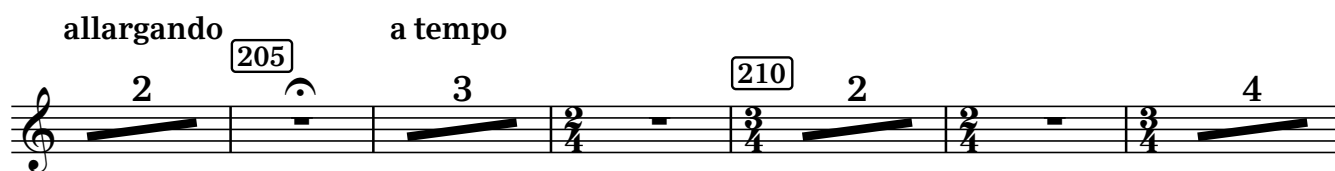
ff

PARTE TERZA: "LIED"

subito Adagio molto ♩ = 60 (♩ = ♩)

185

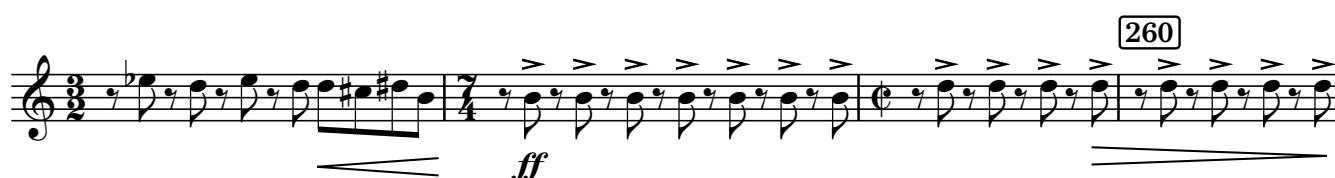
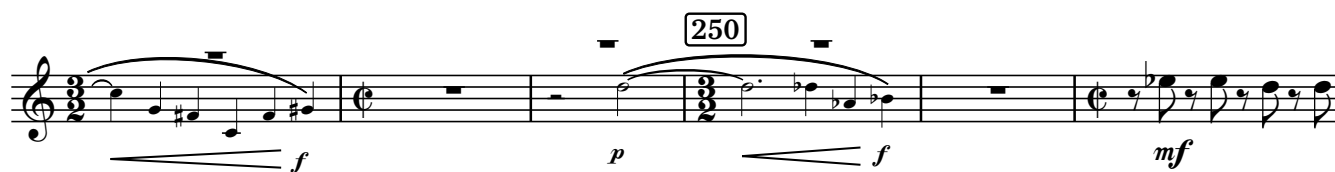
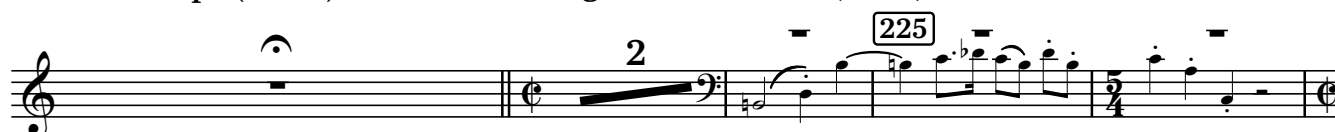
ff

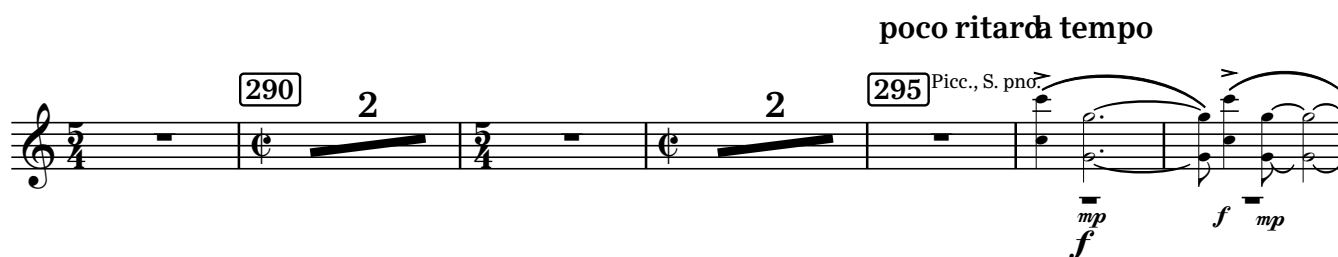
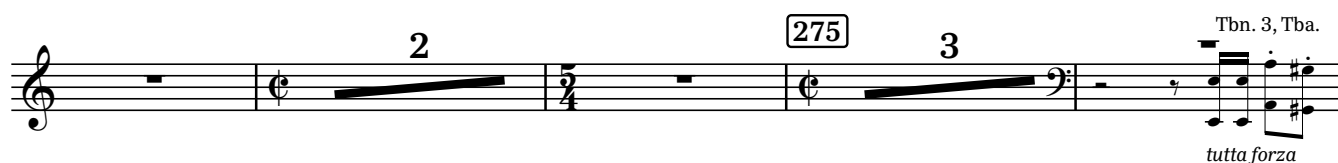


PARTE QUARTA: "RONDÒ"

- - a tempo ($\text{♩} = 48$) rall.

Allegro vivace $\text{♩} = 180$ ($\text{♩} = 90$)





340 *rall.* *a tempo* S. pno.
Tpt. 1
mp

345 *ff* *rall.* - - - -

350 *Allegro vivace* ♩ = 180 *f marcato* 355

360 365

370

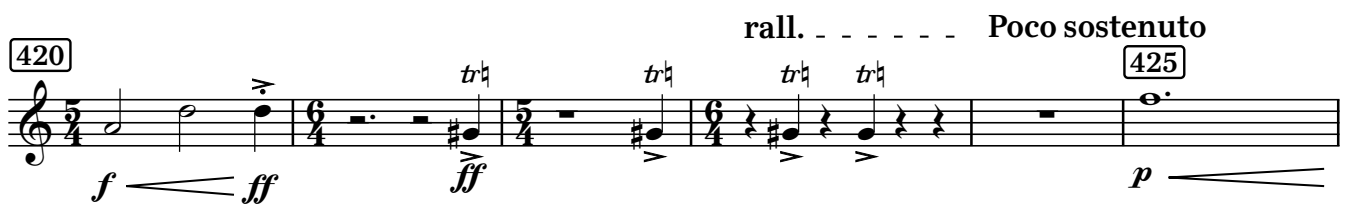
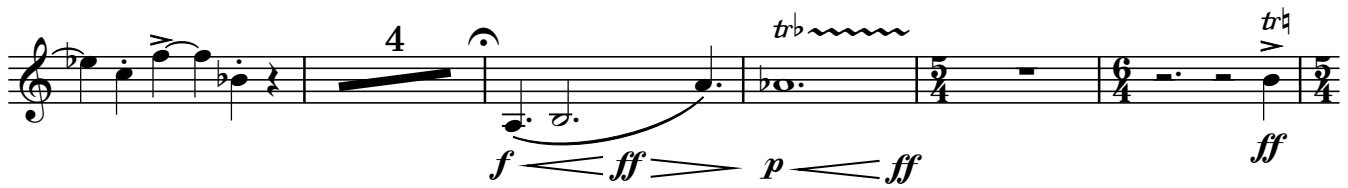
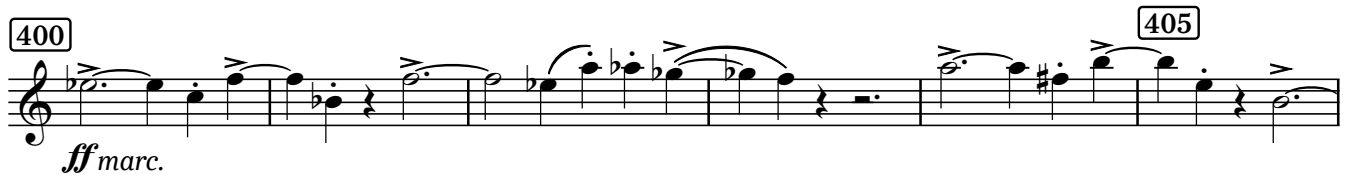
375

380 *poco rall.* *Sostenuto* ♩ = 48 (♩ = 144) *ff grandioso*

385 *allarg.* - *a tempo* ♩ = 180 390 *rall. molto* 2

PARTE QUINTA: "CONCLUSIONE"

a tempo ♩ = 180



a tempo, ma poco agitato



rall. molto a tempo, molto pomposo

