

Timpani

Impressions from the Jungle Book

1. The Jungle

Scott/Johnson

Very Mysteriously ♩=78

9 *pp* *sempre*

17

25

33

41

49

57

65

73

81

87

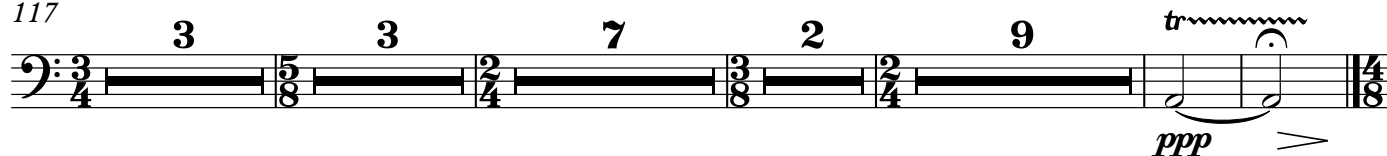
19 20

3/4

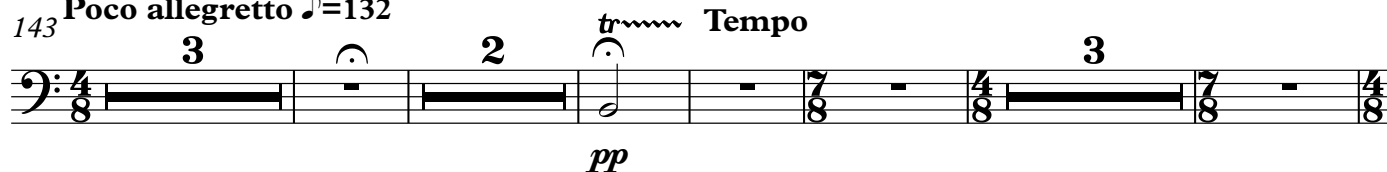
2. Dawn

94 **Andante semplice** ♩=58

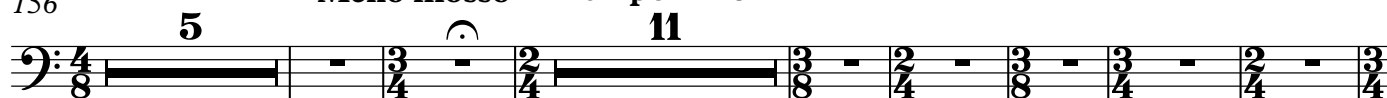
117



3. Riki-Tiki-Tavi (and the snake)

143 **Poco allegretto** ♩=132 **Più mosso** **Tempo**

156

Meno mosso **Tempo** ♩=132

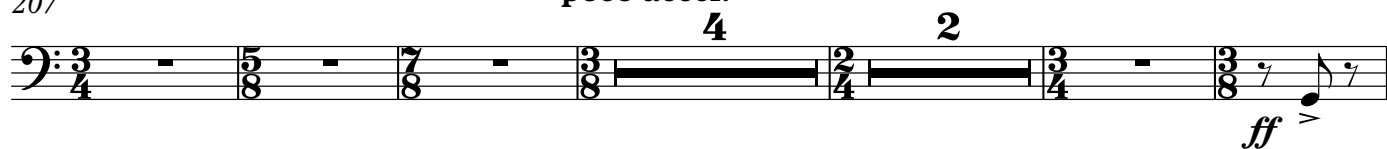
179



194



207

poco accel.

218



222 *tr* **Tempo primo** **Più mosso**

f

231 **rit.** **Più mosso**

239

248 **molto rit.**

4. Morning Song

254 **Andante sostenuto** $\text{♩} = 60$

266

272 **pochiss. string.** **rit.**

280 **A tempo**

293

p *pp* *tr*

5. Dance of the Elephants

301 **Allegro**[illegible]

314

514

Moderato

324

524

The musical score for the bass line of 'The Rose Tree' is written on a single staff. It begins with a treble clef and a key signature of one flat (B-flat). The tempo is marked 'Allegretto' and the dynamics are 'mf'. The score consists of a single line of music with a final double bar line. The notation includes a series of eighth and sixteenth notes, with some measures containing rests. The lyrics 'The Rose Tree' are written below the staff, aligned with the notes. The score is numbered 524 in the top left corner.

343

[illegible]

350

530

10 3 2 *tr~* *tr~* *tr~* *tr~*

mf

370

370

rit. A tempo

9 2 4 2 4 4

mf

389

389

4 8

mf

406

trm trm trm



f *cresc.*

412

412 **tr** **accel.**

ffp *cresc.* *ff*