

Trombone 1

Variations on a Nursery Tune
(A Younger Person's Guide)

Johnson

Tempo recitativo

3 2

9 rit.

Var. 1 Allegro

16

23

29

34 rit.

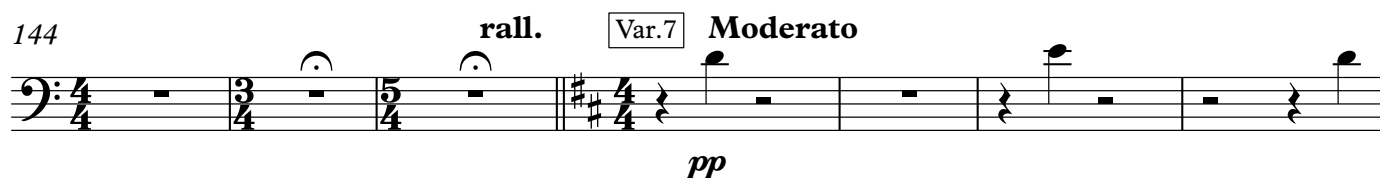
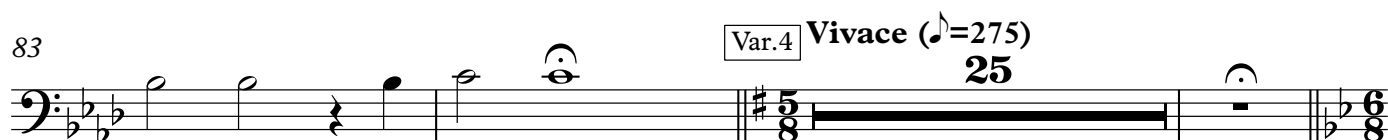
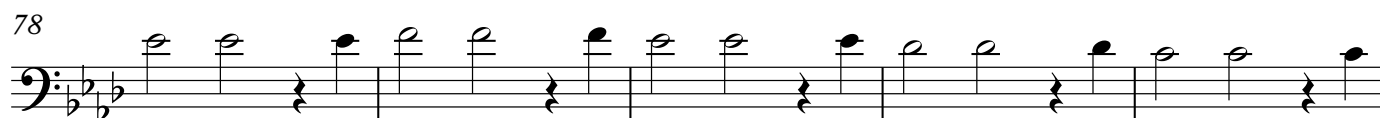
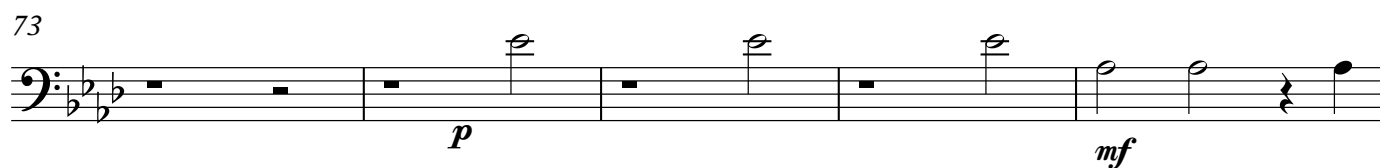
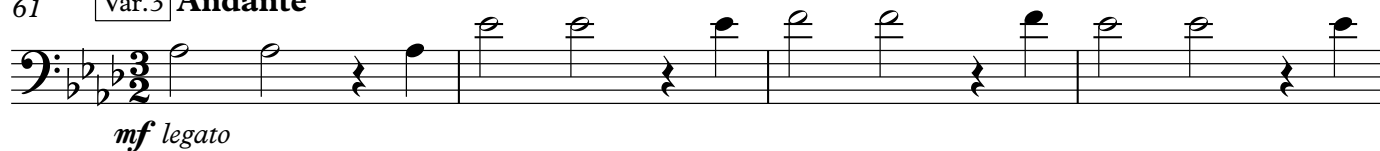
Var. 2 Molto meno mosso e rubato (♩=64)

3 3 7

51 rall.

tempo

8

61 **Var.3 Andante**

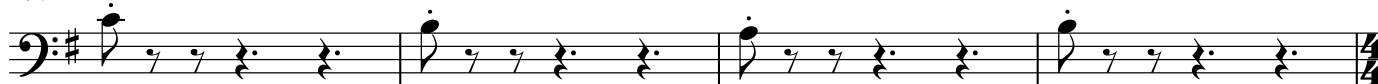
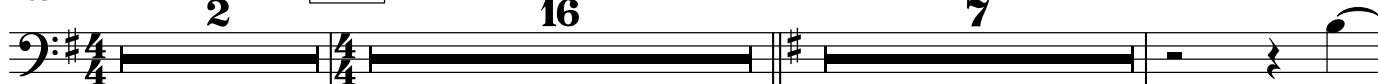
163



175

*mf*

179

183 **Meno mosso** Var.9 **Poco meno mosso** (♩=128)*p*209 **rit.**Var.10**Andante****accel. poco a poco***p**p*231 Var.11 **Allegro vivace**

249

263 Var.12 **Poco più mosso***f*

271

*f*

278

6

f

289

Var.13

294 **Andante quasi cadenza**

4

Allegro con moto

4

305 **Andante quasi cadenza**

6

Var.14 **Moderato con moto**

mf

318

325

mf

334

339

2

Var.15

344 **Andante**

15

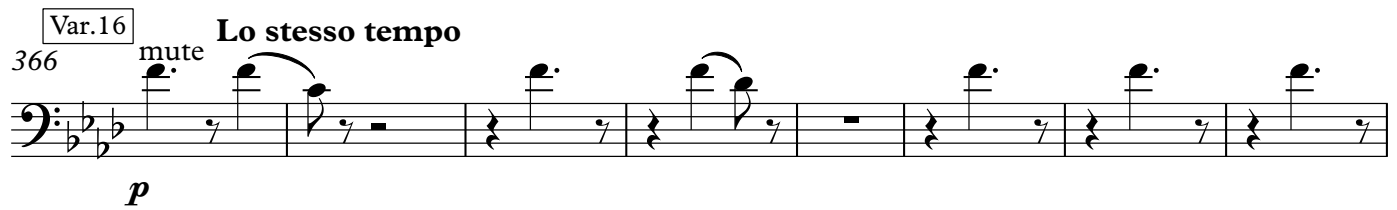
rall.

4

Tempo

2

Var.16 **Lo stesso tempo**
366 *mute*
p



374
9
p



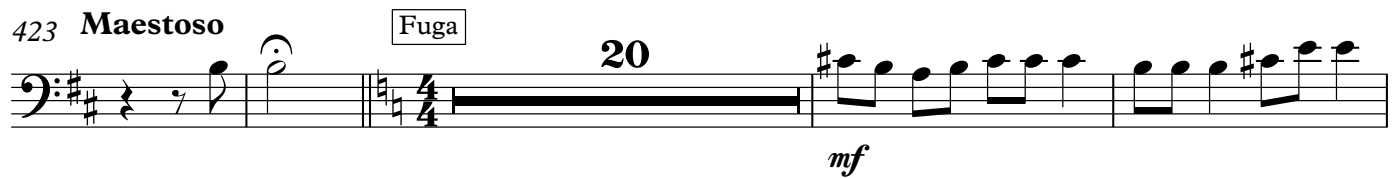
388



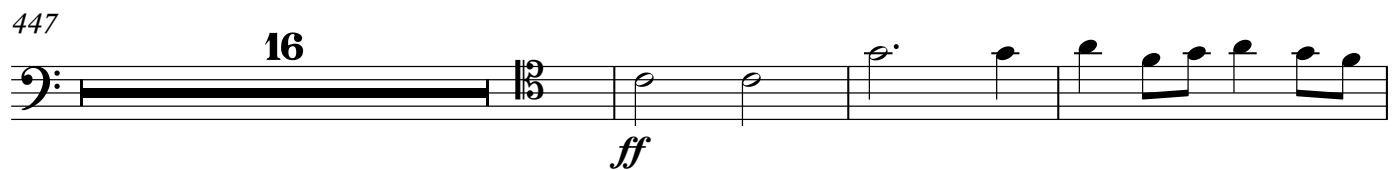
394 **rit.** Var.17 **Allegro giocoso**
2 24
mf



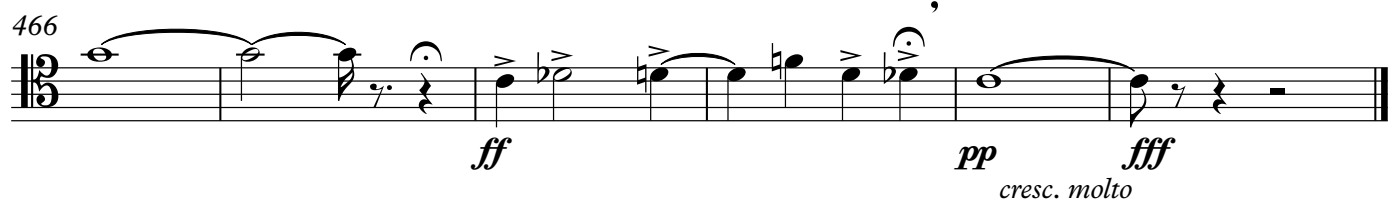
423 **Maestoso** Fuga 20
mf



447 16
ff



466
ff *pp* *fff*
cresc. molto



Trombone 2

Variations on a Nursery Tune
(A Younger Person's Guide)

Johnson

Tempo recitativo

3 mute

pp

9 **rit.** *senza* Var. 1 **Allegro**

f

16

23

f

29

34 **rit.** Var. 2 **Molto meno mosso e rubato** (♩=64)

3 3 7

51 **rall.** **tempo**

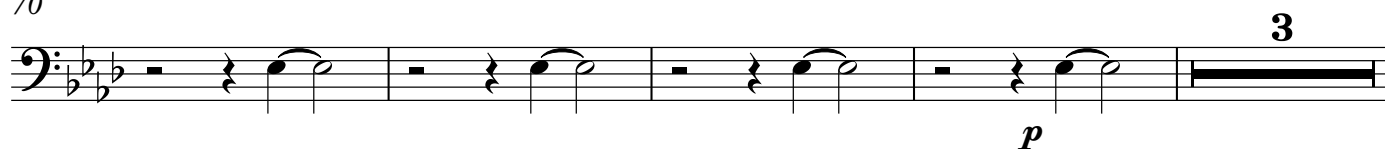
8

61 Var.3 **Andante**

65



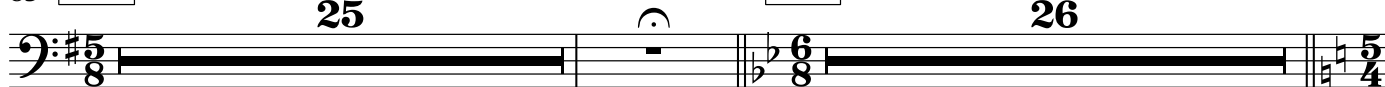
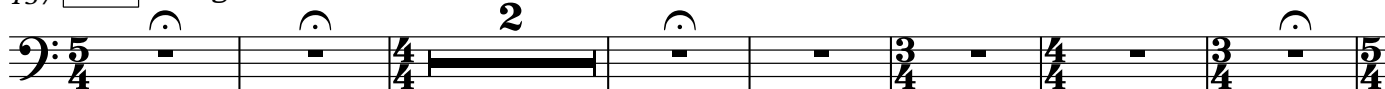
70



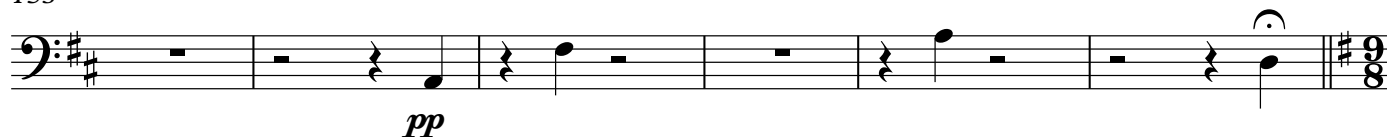
77



81

85 Var.4 **Vivace** (♩=275)
25Var.5 **Lo stesso tempo**
26137 Var.6 **Largo e rubato**146 **rall.** Var.7 **Moderato**

153



159 [Var.8] **Allegro giocoso** (♩=144)

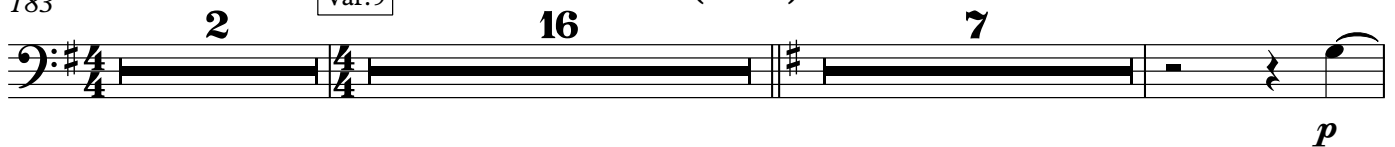
164



176



180

183 **Meno mosso rit.** [Var.9] **Poco meno mosso** (♩=128)209 **rit.**

[Var.10]

Andante**accel. poco a poco**231 [Var.11] **Allegro vivace**

249

263 [Var.12] **Poco più mosso**

265

f

271

281

f

289

294 Var.13 **Andante quasi cadenza** **Allegro con moto**

305 **Andante quasi cadenza** Var.14 **Moderato con moto**

mf

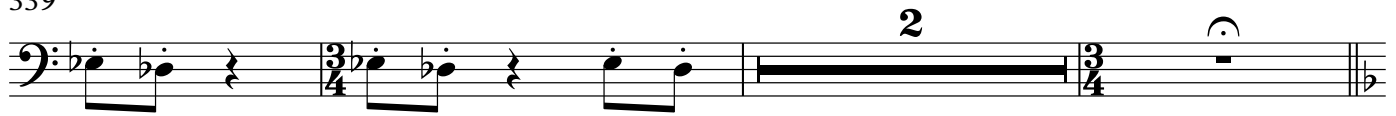
318

325

mf

334

339



344 Var.15

Andante**rall.****Tempo**

Var.16

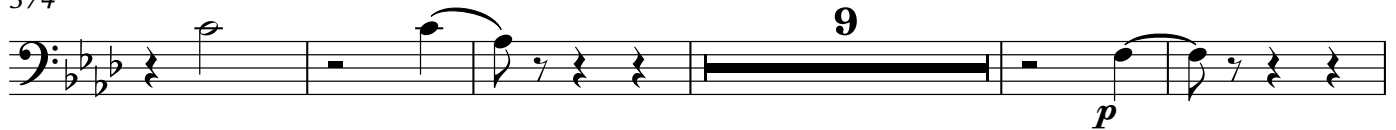
Lo stesso tempo

366

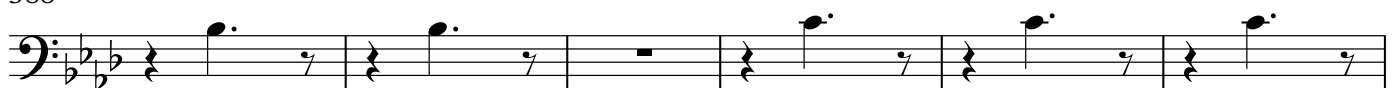
mute.



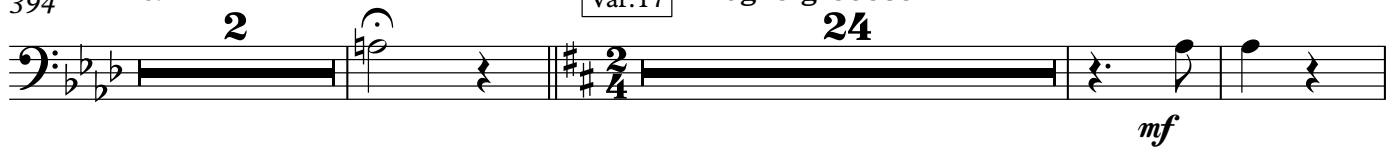
374



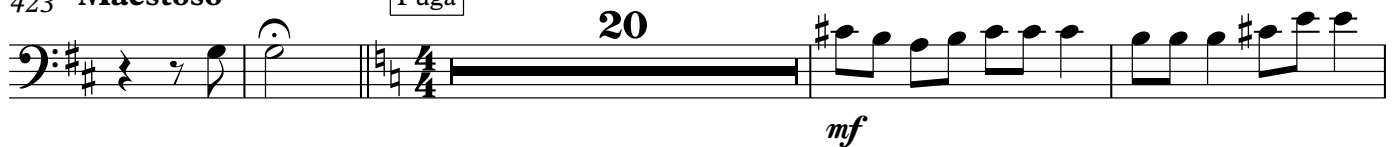
388



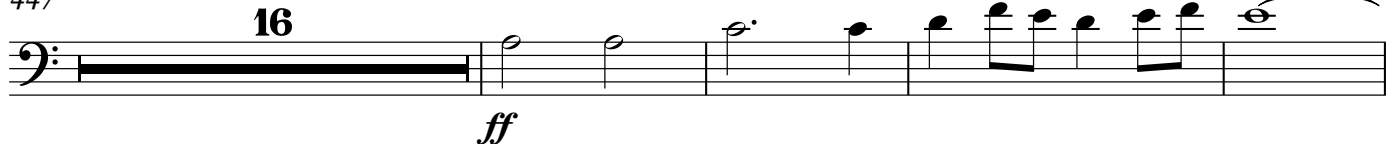
394

rit.Var.17 **Allegro giocoso**423 **Maestoso**

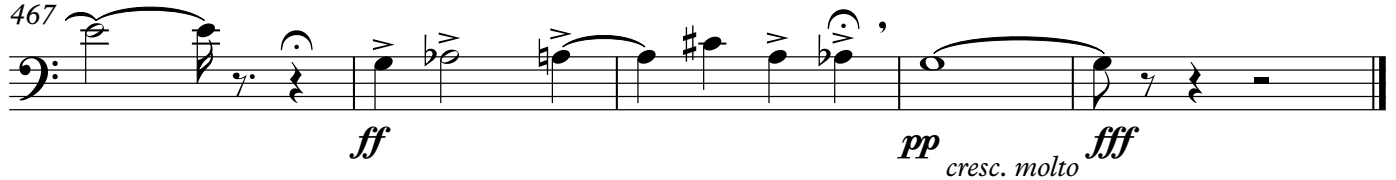
Fuga



447



467



Bass Trombone

Variations on a Nursery Tune

(A Younger Person's Guide)

Johnson

Tempo recitativo

3 mute

pp

9 **rit.** *senza* Var. 1 **Allegro**

f

16

23

f

29

34 **rit.** Var. 2 **Molto meno mosso e rubato** (♩=64)

f

51 **rall.** **tempo**

f

61 Var.3 **Andante**

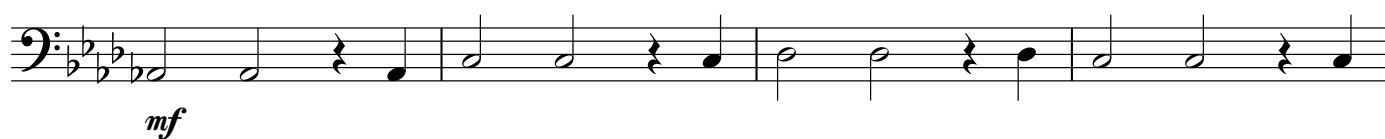
65



73



77



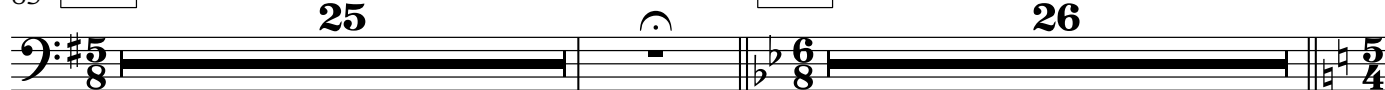
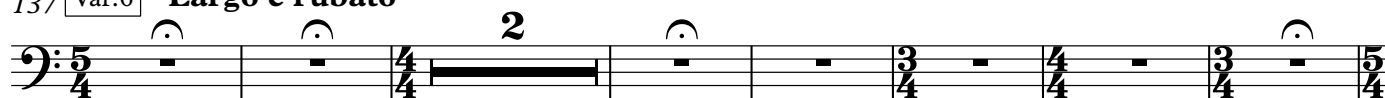
81

85 Var.4 **Vivace** (♩=275)

25

Var.5 **Lo stesso tempo**

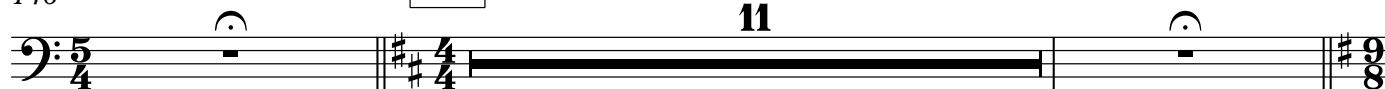
26

137 Var.6 **Largo e rubato**

146

rall.Var.7 **Moderato**

11

159 Var.8 **Allegro giocoso** (♩=144)

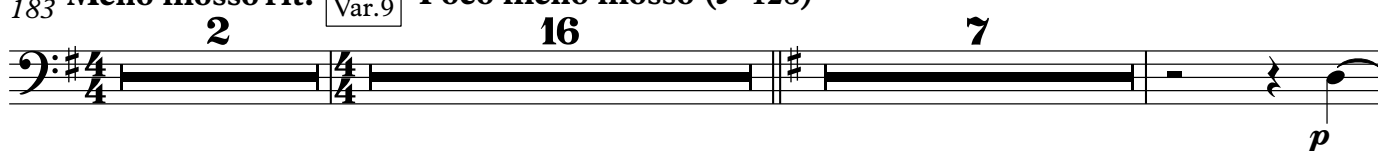
164



176



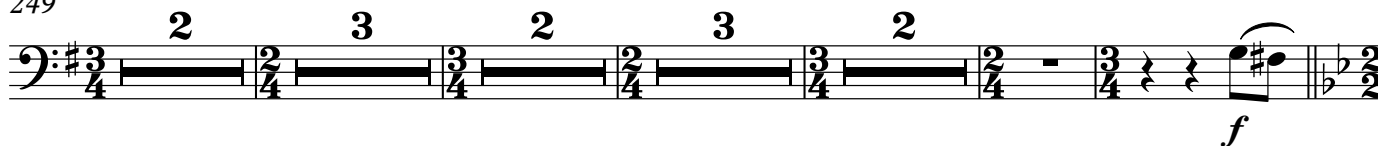
180

183 **Meno mosso rit.** [Var.9] **Poco meno mosso** (♩=128)209 **rit.**

[Var.10]

Andante**accel. poco a poco**231 [Var.11] **Allegro vivace**

249

263 [Var.12] **Poco più mosso**

266



281



286



Andante quasi cadenza

301 Allegro con moto



Var.14

313 Moderato con moto



325



334



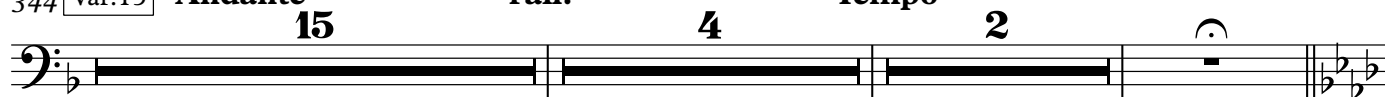
344

Var.15

Andante

rall.

Tempo



366

Var.16

mute

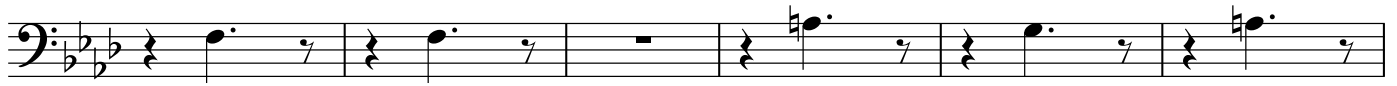
Lo stesso tempo



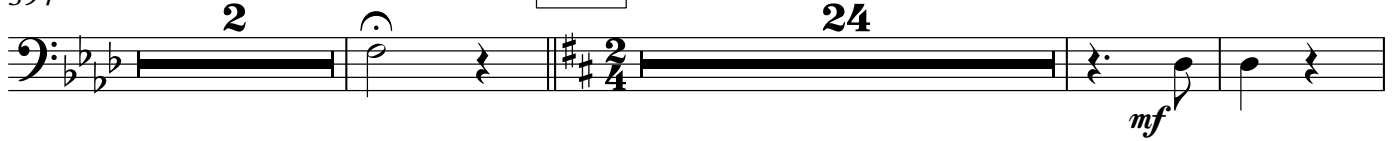
374



388

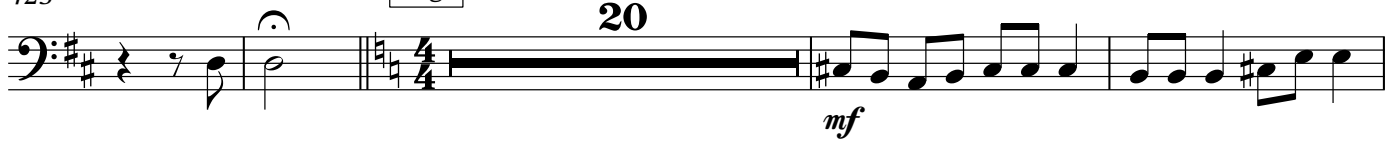
394 **rit.**

Var.17

Allegro giocoso423 **Maestoso**

Fuga

20

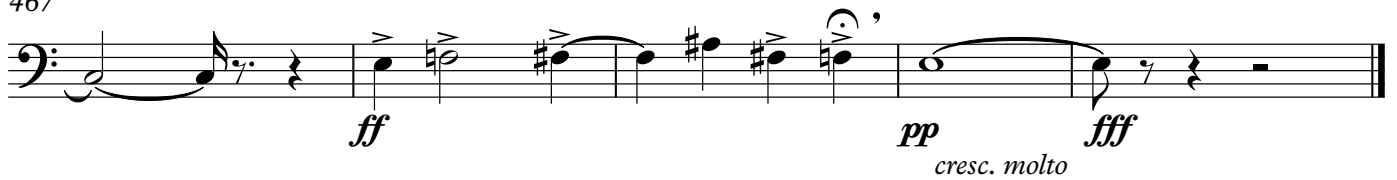


447

16



467



Tuba

Variations on a Nursery Tune
(A Younger Person's Guide)

Johnson

Tempo recitativo

3 2

9 rit.

Var. 1 Allegro

16

23

29

34 rit.

Var. 2 Molto meno mosso e rubato (♩=64)

3 3 7

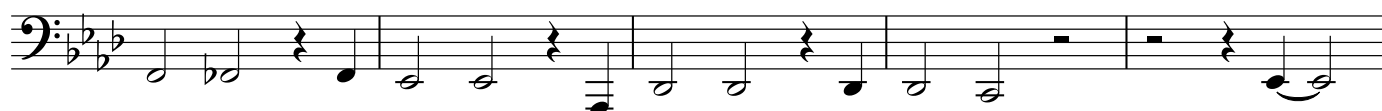
51 rall.

tempo

8

61 Var.3 **Andante**

65



70



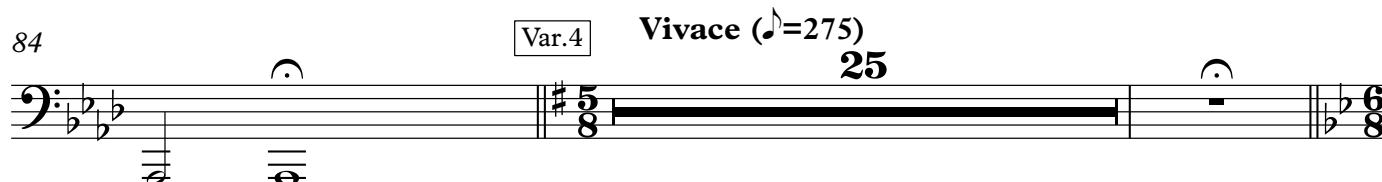
75



80



84

111 Var.5 **Lo stesso tempo** Var.6 **Largo e rubato**

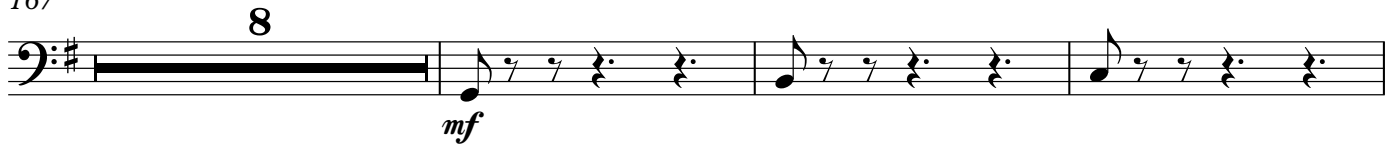
143

147 Var.7 **Moderato** Var.8 **Allegro giocoso** (♩.=144)

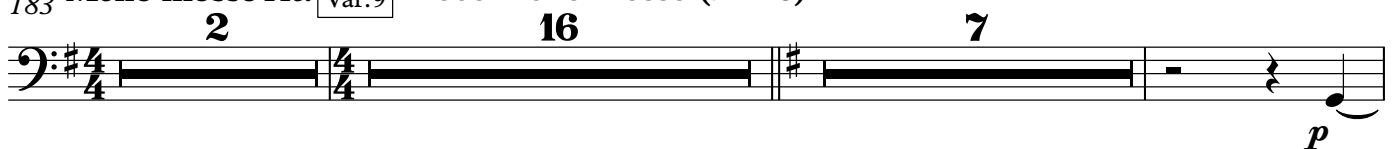
162



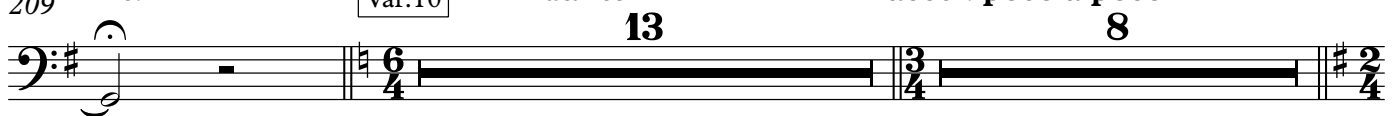
167



178

183 **Meno mosso rit.** [Var.9] **Poco meno mosso** (♩=128)209 **rit.**

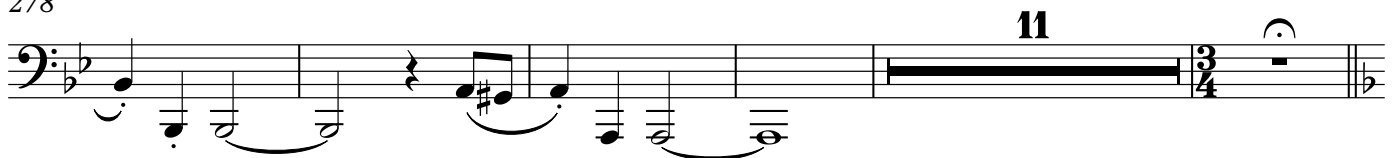
[Var.10]

Andante**accel. poco a poco**231 [Var.11] **Allegro vivace**

249

263 [Var.12] **Poco più mosso**

278



294 Var.13 **Andante quasi cadenza** **4** **Allegro con moto** **4**

305 **Andante quasi cadenza** **6** Var.14 **Moderato con moto** **2**

319 **2** **2**

331 **2** **2** **2** **3**

344 Var.15 **Andante** **15** **rall.** **4** **Tempo** **2**

366 Var.16 **Lo stesso tempo** **20**

390 **rit.** **2**

397 Var.17 **Allegro giocoso** **24** **Maestoso**

425 Fuga **38**

466

466

ff

pp
cresc. molto

fff

The musical score for Tuba, measures 466-471, is written in bass clef. Measure 466 begins with a half note G2, followed by a quarter note F2, and a quarter note E2. Measure 467 starts with a half note D2, followed by a quarter note C2, and a quarter note B1. Measure 468 contains a half note A1, followed by a quarter note G1, and a quarter note F1. Measure 469 features a half note E1, followed by a quarter note D1, and a quarter note C1. Measure 470 begins with a half note B0, followed by a quarter note A0, and a quarter note G0. Measure 471 concludes with a half note F0, followed by a quarter note E0, and a quarter note D0. The dynamics are *ff* (fortissimo) for measures 467-469, *pp* (pianissimo) for measure 470, and *fff* (fortississimo) for measure 471. The instruction *cresc. molto* (crescendo molto) is written below the staff between measures 470 and 471.