

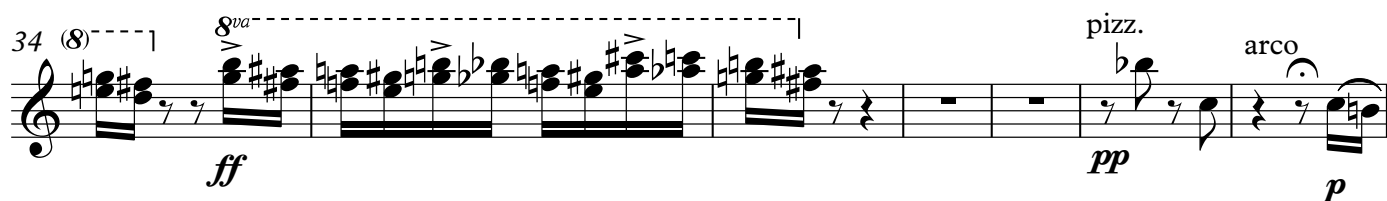
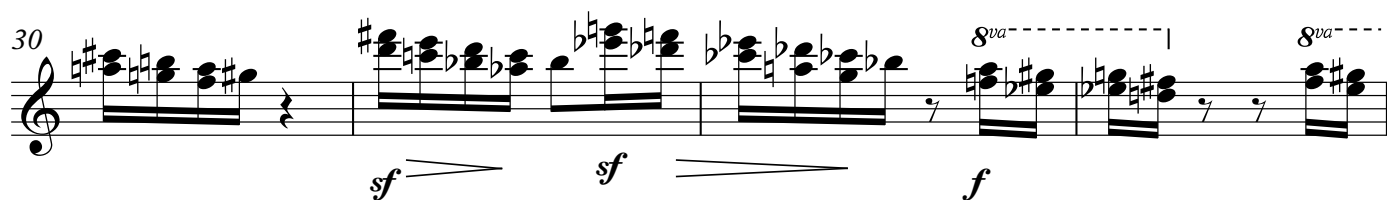
Violin I

Burlesken

I.

Toch/Johnson

Gemaechlich (♩=78)



Etwas langsamer



52 **rit. a tempo**
p

58 *cresc.*

63 *8va-*
f cresc. ff dim.

68 **Molto rit. (tempo)**

71 *p*

76 **molto rit. Tempo I**
pizz. mf *2 arco p*

85 *sf sf*

90 *8va-*
sf sf f

94 (8) *8va-*
ff pizz. arco pp

II.

Lebhaft (♩=110)

101 pizz. *p*

109 arco *mf*

5

120 pizz. *pp* *p* *cresc.*

2

127 arco *f* *f* **Fine**

7

Ruhig (♩=70)

141 mutes *p*

3

149 *p* *cresc.*

3

157 *f* *dim.*

163 poco rit. a tempo *mf* *p*

3

171 rit. *pp* **D.C. al Fine** senza

2

III. (The Juggler)

181 **Molto vivo** ($\text{♩}=88$)

8

p

196

sf *mp*

205

10

f *p*

221

232

mf

238

8^{va}

f

246

6

mf *cresc.*

257

6

ff *f* *p*

269

cresc.

The image shows a page of a musical score for Violin I, titled 'III. (The Juggler)'. The tempo is 'Molto vivo' with a metronome marking of quarter note = 88. The key signature has one sharp (F#). The score consists of nine staves of music. The first staff (measures 181-195) features a series of eighth-note chords, starting with a forte (f) dynamic and moving to piano (p). The second staff (measures 196-204) continues with eighth-note chords, marked sf and mp. The third staff (measures 205-220) includes a ten-measure rest followed by eighth-note chords, marked f and p. The fourth staff (measures 221-231) consists of eighth-note chords. The fifth staff (measures 232-237) features eighth-note chords with a mezzo-forte (mf) dynamic. The sixth staff (measures 238-245) includes an octave extension (8va) and ends with a forte (f) dynamic. The seventh staff (measures 246-256) has a six-measure rest followed by eighth-note chords, marked mf and cresc. The eighth staff (measures 257-268) begins with a six-measure rest, followed by eighth-note chords, marked ff, f, and p. The ninth staff (measures 269-278) continues with eighth-note chords, marked cresc.

277



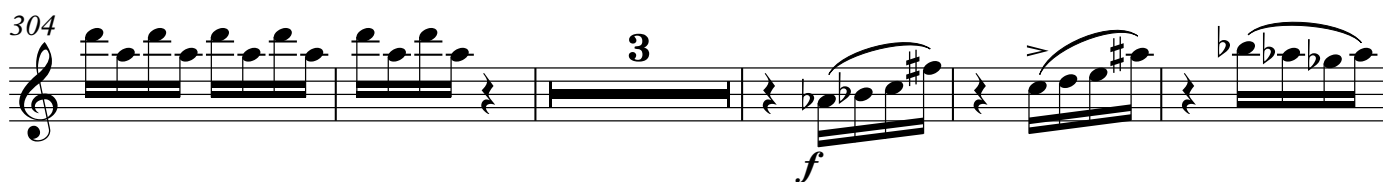
285



293



304



312



317



322



327

