

Duet for 2 Tenor Trombones in D minor, Op.2503

Tenor Trombone

Stephen W. Beatty (1938)

♩ = 95

5

9

13

17

21

26

30

34

f

ff

mf

f

mf

ff

f

mf

V.S.

38

f

41

f

46

mp *mf*

50

mp *mf* *p*

53

mp *mf*

57

f *mf*

61

mp *f*

65

mf *f* *mf*

69

f *mf* 3

74

mp *mf*

Tenor Trombone

3

78



83



88



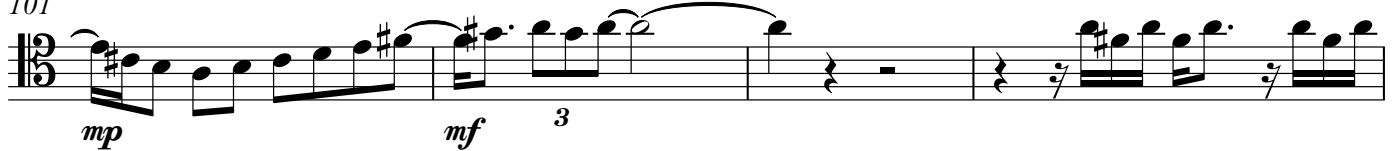
92



96



101



105



109



113



117



V.S.

121



124



128



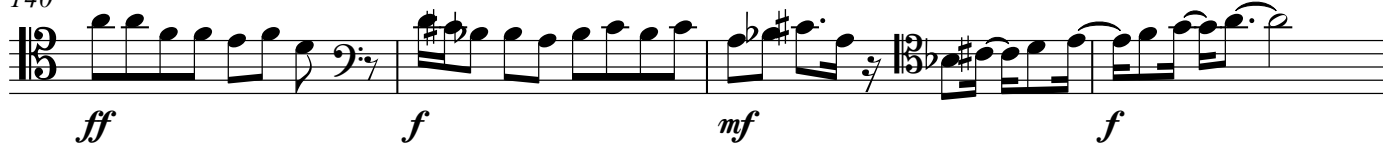
132



136



140



144



146

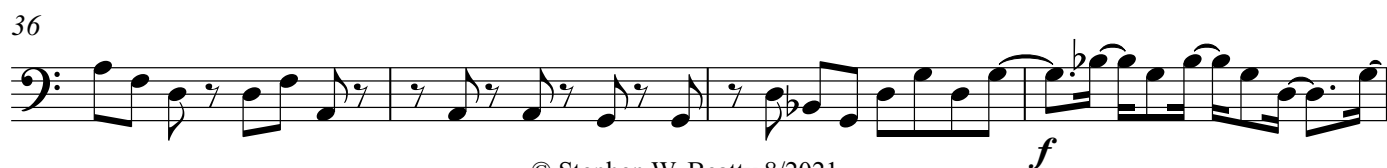
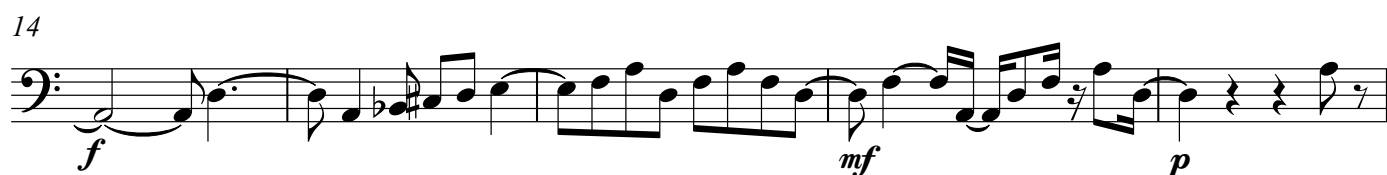


Duet for 2 Tenor Trombones in D minor, Op.2503

Tenor Trombone 2

Stephen W. Beatty (1938)

♩ = 95



[illegible]

Musical notation for the bass line of 'The Rose Tree'. The key signature has one flat (B-flat). The melody consists of eighth and sixteenth notes, with a dynamic marking of *mf* (mezzo-forte) appearing below the staff.

The bass line of 'The Rose Tree' is written on a single staff in bass clef. It consists of four measures. The first measure contains a quarter note G2, an eighth note A2, a quarter note B2, and a quarter note C3. The second measure contains a quarter note D3, an eighth note E3, a quarter note F3, and a quarter note G3. The third measure contains a quarter note A3, an eighth note B3, a quarter note C4, and a quarter note D4. The fourth measure contains a quarter note E4, an eighth note F4, a quarter note G4, and a quarter note A4.

Musical notation for the bass line of 'The Rose Tree'. The key signature has one flat (B-flat). The melody starts with a mezzo-forte (*mf*) dynamic, followed by a forte (*f*) section, and then returns to mezzo-forte (*mf*). The notation includes various note values, rests, and phrasing slurs.

A musical score for the bass line of 'The Rose Tree'. The notation is on a single staff with a bass clef. It begins with a key signature of one flat (B-flat) and a common time signature (C). The melody consists of eighth and sixteenth notes, with some rests. The piece concludes with a double bar line and a key signature change to one sharp (F#), indicated by a sharp sign on the F line. Dynamics markings 'p' (piano) and 'mp' (mezzo-piano) are present below the staff.

83



88



92



96



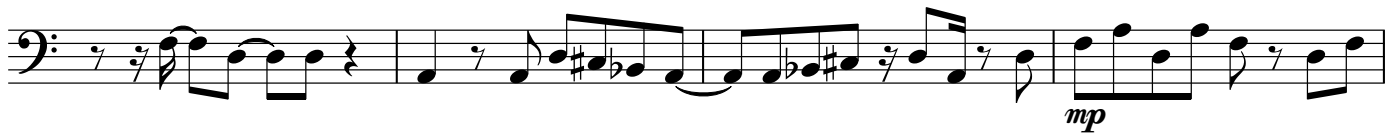
100



105



109



113



117



122



126



130



134



138



142



146

