

Concerto stilizzato

paraphrase on a motif by Brahms

PARTE PRIMA: "CADENZA"

Tamás Beischer-Matyó

Adagio $\text{♩} = 60$ Cadenza

22

25

trb

ppp ff ff

30

poco rall. . . . Poco sostenuto

ff ff

PARTE SECONDA: "FORMA-SONATA"

Allegro con brio $\text{♩} = 180$ ($\text{♩} = 60$)

35

40

trb

ff ff ff ff pp

3

C. a., Bsn. 1

45

D. bsn., S. pno., D. b.

p

50

mf f

55

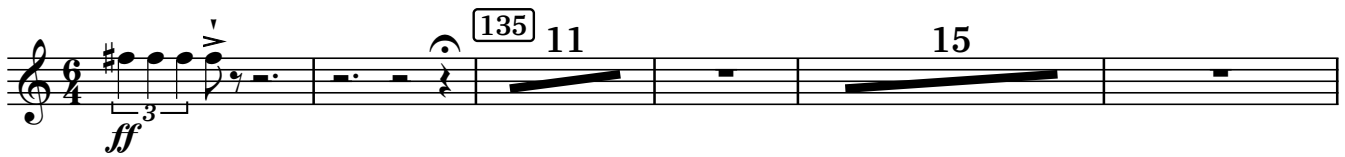
2

Musical score for Oboe 2, measures 1-115. The score includes various musical notations such as treble clef, key signature of one flat, time signatures (2/4, 3/4, 4/4, 6/4, 7/4, 5/4), and dynamic markings (*f*, *ff*, *f espressivo*, *poco ritard.*, *a tempo*). It also features performance instructions like *poco ritard.*, *Sostenuto*, *allarg.*, and *a tempo*. Rehearsal marks are numbered in boxes: 15, 80, 85, 90, 95, 100, 105, 110, 115. Instrument abbreviations include Ob. 1, Fl., Vln., S. pno., Hp., Fl., Cl., Bsn. Measure 115 ends with a common time signature 'C'.



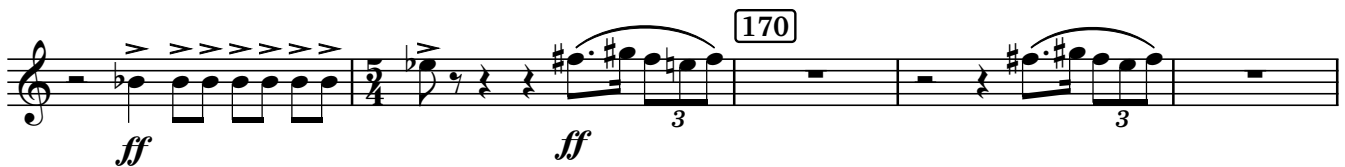
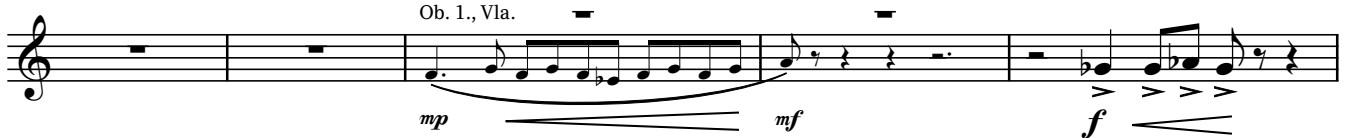
molto rall. a tempo

rall. Meno allegro ♩ = 120 (senza rall.)



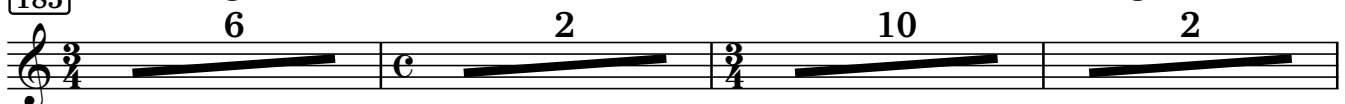
accel. al ♩ = 180 (a tempo)

Ob. 1., Vla.

**PARTE TERZA: "LIED"**

subito Adagio molto ♩ = 60 (♩ = ♩)

allargando



205 a tempo 3 210 2 4

molto rall. più adagio e molto flessibile $\text{♩} = 48$ poco a poco allarg. 220

PARTE QUARTA: "RONDÒ"

a tempo ($\text{♩} = 48$) rall. Allegro vivace $\text{♩} = 180$ ($\text{♩} = 90$) B. cl. 225

230 5 235

poco rall. a tempo rall. a tempo S. pno 245

Fl., Cl., Str. 250

255

260 265

8 Picc. Fl.

4 3 3 3

pp

270

p *f*

275

2 8 3

S. pno.

290

p marcato *f* *f*

2 2

295 poco ritard. a tempo

310

11 Tpt. 1 Cl. 1 Tpt. 1 + Cl. 1

p *f* *ff* *ff*

rall. ----- Meno vivace ♩ = 144

315 325

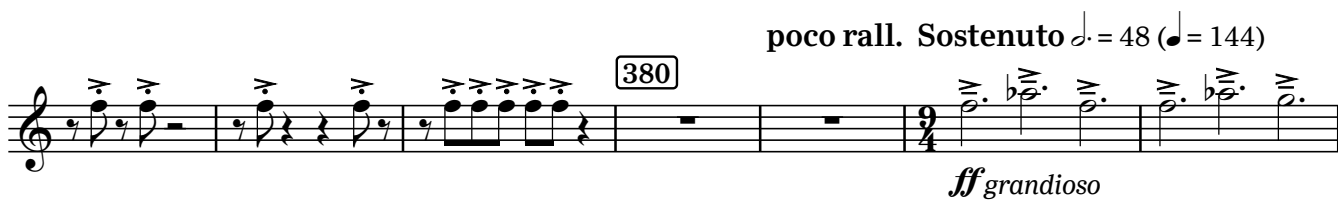
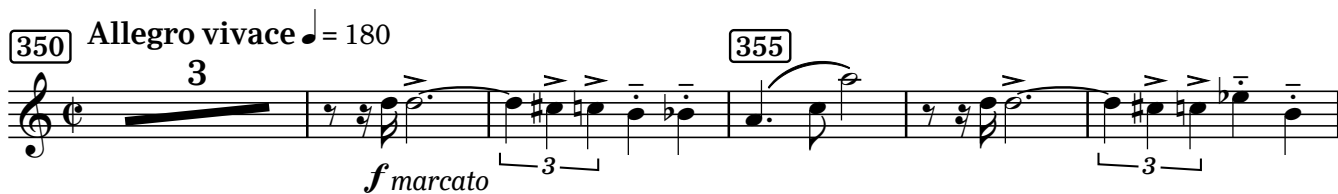
10 14

340 rall. a tempo

Tpt. 1 S. pno.

345

mp



PARTE QUINTA: "CONCLUSIONE"

