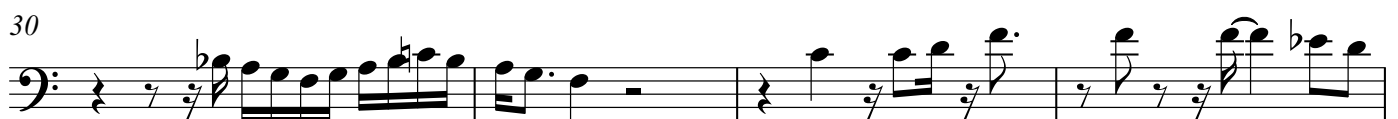
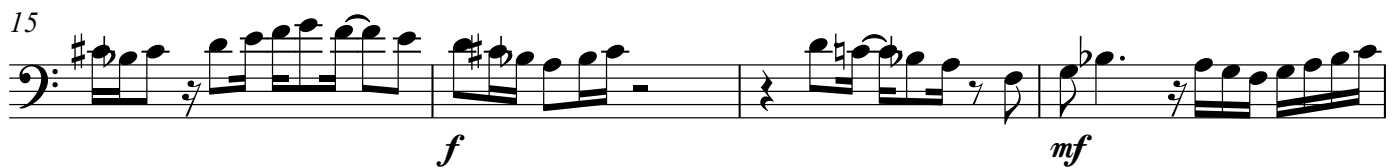


# Duet for Bassoon and Cello in F major, Op.2427

Violoncello

Stephen W. Beatty (1938)

♩ = 100



34



37



41



44



48



52



55



59



63



66



## Violoncello

3

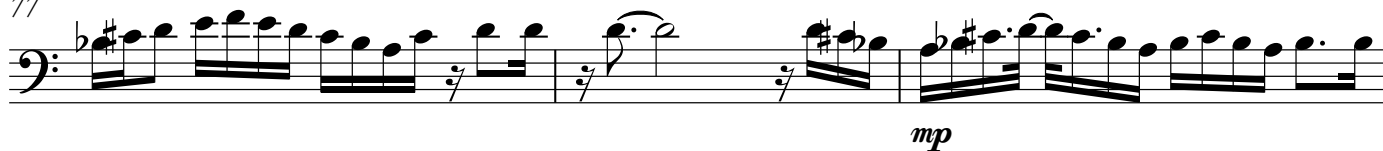
70



74



77



80



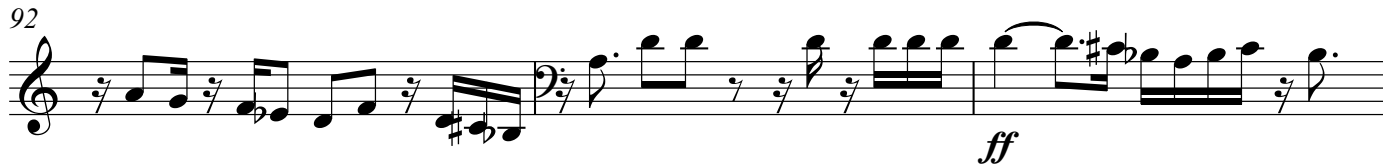
84



89



92



95



98

mp

Measures 98-101: Bass clef, 4/4 time. Measure 98 starts with a key signature change to one sharp (F#). The music consists of eighth and sixteenth notes with various rests.

102

Measures 102-105: Bass clef, 4/4 time. Measure 102 continues the eighth and sixteenth note patterns. Measure 104 features a half note chord.

106

f mf

Measures 106-109: Bass clef, 4/4 time. Measure 106 begins with a forte (f) dynamic and a sixteenth-note triplet. Measure 108 has a mezzo-forte (mf) dynamic.

110

f mf

Measures 110-113: Bass clef, 4/4 time. Measure 110 starts with a forte (f) dynamic. Measure 112 has a mezzo-forte (mf) dynamic.

114

f mf

Measures 114-117: Bass clef, 4/4 time. Measure 114 starts with a forte (f) dynamic. Measure 116 has a mezzo-forte (mf) dynamic.

118

f

Measures 118-121: Bass clef, 4/4 time. Measure 118 starts with a forte (f) dynamic. Measure 120 features a half note chord.

122

mf

Measures 122-125: Bass clef, 4/4 time. Measure 122 starts with a mezzo-forte (mf) dynamic. Measure 123 includes a key signature change to one flat (Bb). Measure 124 has a treble clef.

126

f

Measures 126-129: Bass clef, 4/4 time. Measure 126 starts with a forte (f) dynamic. Measure 128 features a half note chord.

130

mf

Measures 130-132: Bass clef, 4/4 time. Measure 130 starts with a mezzo-forte (mf) dynamic. Measure 131 includes a key signature change to two flats (Bb, Eb). Measure 132 has a treble clef.

133

Measures 133-136: Treble clef, 4/4 time. Measure 133 continues the melodic line. Measure 134 includes a key signature change to two sharps (F#, C#).

137



141



145



148



# Duet for Bassoon and Cello in F major, Op.2427

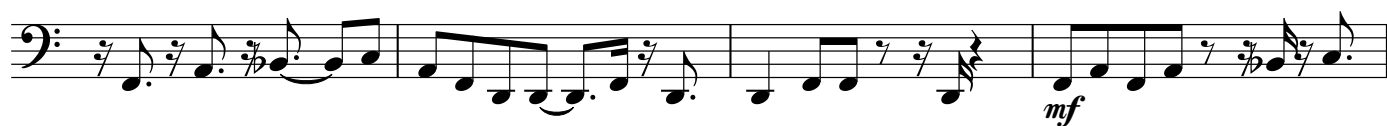
Bassoon

Stephen W. Beatty (1938)

♩ = 100



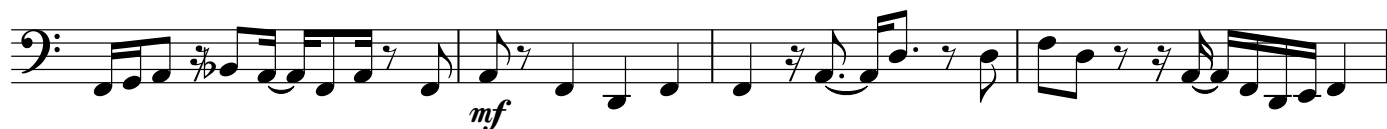
5



9



13



17



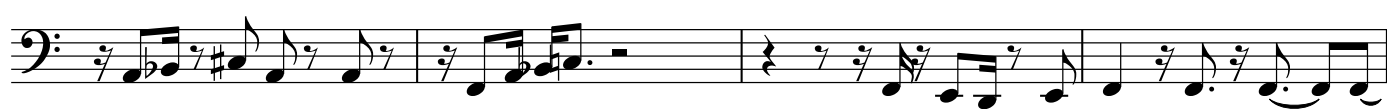
21



25



29



33



37



41



45



49



53



57



61



65



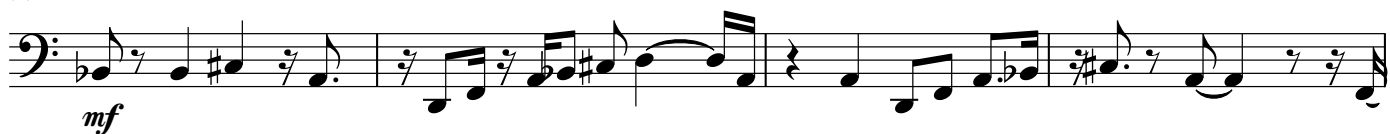
69



73



77



81



85



89



93



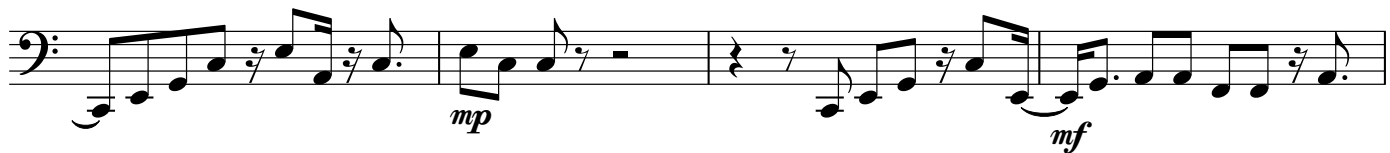
97



101



105



109



113





117



121



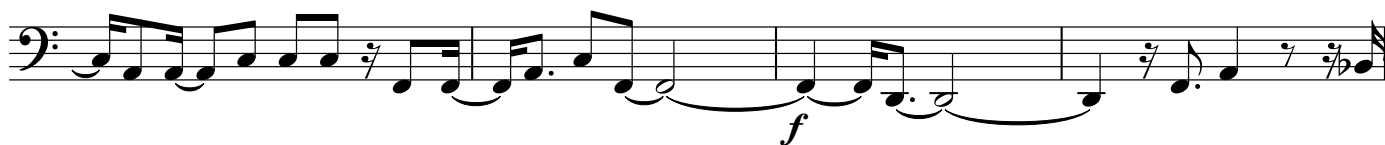
125



129



133



137



141



145



148

