

## Double Bass

## La Boheme Suite No. 2

Puccini/Johnson

**Allegro vivace** 11 *pizz. rit.* **Tempo rall.** 1 **Tempo** 4

19 **Vivo** 4 2

28 4 *pizz.* *pp*

38

42 *rit.* *dim.* **molto rall.** 3

48 2 **Andante lento** 4 *pp* 3

60 *rall.* 3 **Andante calmo** *rit.* **Tempo** *pizz.* *pp*

67 2 *rall.* **A tempo** 2 **Lentamente** 5

77 4 **Allegretto moderato** 5 *poco rall.* 2 **A tempo** 8 *poco rall.* 2

*f*

*mf*

*pp*

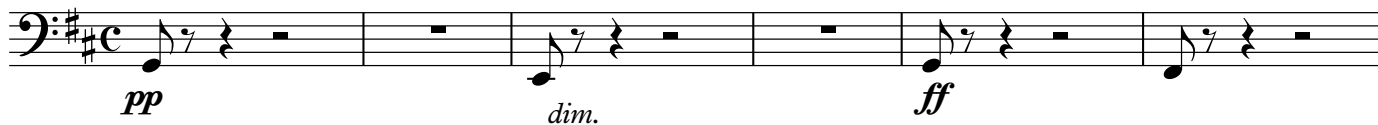
*pp*

*pp*

*pp*

*pp*

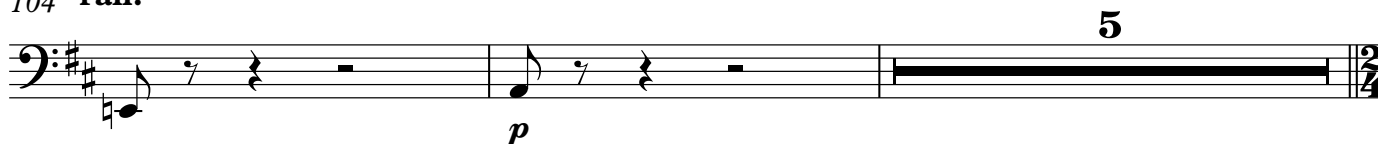
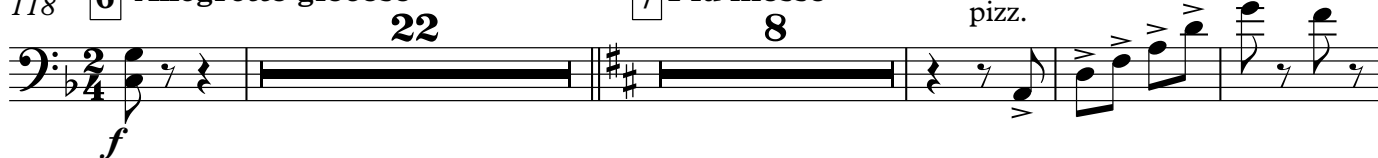
*pp*

95 **5** Andante sostenuto molto

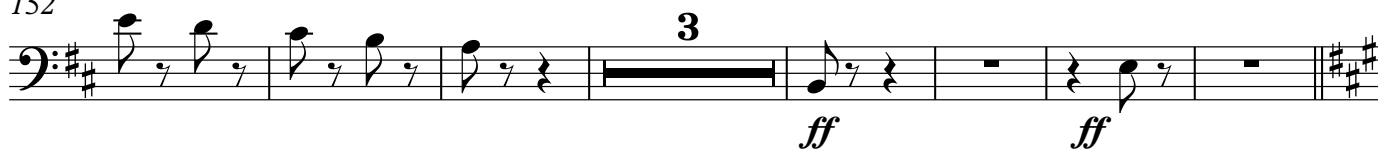
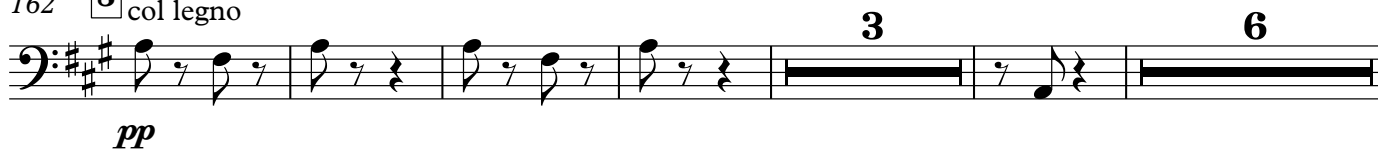
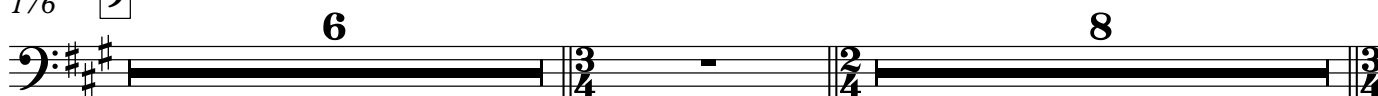
101 poco allarg.



104 rall.

111 pizz. **Tempo, ma calmo**118 **6** Allegretto giocoso**7** Più mosso

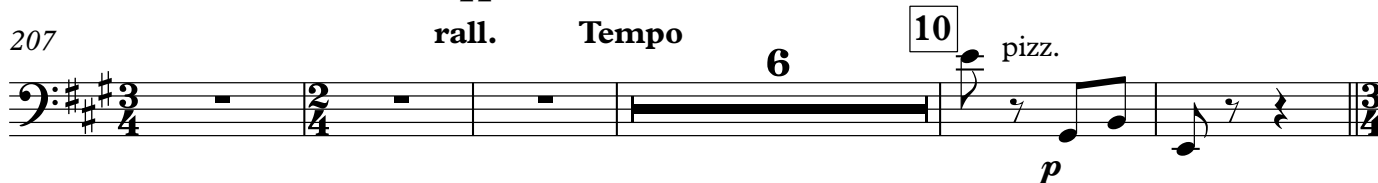
152

162 **8** col legno176 **9**

191



207





13

13

The bass line of 'The Rose Tree' is written in G major (one sharp) and 3/4 time. It consists of seven measures, each containing a quarter note followed by two eighth notes. The notes are: G2 (one ledger line below), A2 (below staff), B2 (below staff), C3 (below staff), D3 (below staff), E3 (below staff), and F#3 (below staff).

The bass line of 'The Rose Tree' is written in G major (one sharp) and 2/4 time. It consists of six measures. The notes are: G2 (quarter), A2 (quarter), G2 (quarter), F#2 (quarter), E2 (quarter), D2 (quarter), C2 (half). The melody is written in treble clef with a key signature of one sharp (F#) and a 2/4 time signature. It consists of six measures. The notes are: D4 (quarter), E4 (quarter), F#4 (quarter), G4 (quarter), A4 (quarter), B4 (quarter), C5 (half). The melody and bass line are played in unison.

512 *animato* **4** **2** *allarg.*



320 1 555 *animato*

The musical score for the bass line of 'The Little Boat' is written on a single staff in bass clef with a key signature of three sharps (F#, C#, G#). The tempo is marked 'animato'. The score begins with a piano (*pp*) dynamic. The first measure contains a quarter note G2, followed by two measures of rests. The third measure contains a quarter note G2, followed by two measures of rests. The fifth measure contains a half note G2, followed by a final measure with a double bar line and a repeat sign. The number '2' is written above the final measure, indicating a second ending or a repeat.

musical score for the bass line of the 'poco rall.' section. The key signature is three sharps (F#, C#, G#) and the time signature is 3/4. The notation includes a forte (*ff*) dynamic marking, a piano (*p*) dynamic marking, and a fortissimo (*f*) dynamic marking. The melody features a series of eighth and quarter notes, with a fermata over the final measure.

332 **A tempo ed incalz.**

pizz. arco pizz. arco pizz.

*p* *cresc.* *m* *m*

[illegible]

343 *div. arco* *pp* *pizz.* **poco rit.**

The musical score for measures 343-346 is written in bass clef with a key signature of two sharps (D major). Measure 343 begins with a forte (f) dynamic and a divisi arco instruction. The melody consists of a half note D4, a quarter note E4, and a quarter rest. The bass line has a half note D3, a quarter note E3, and a quarter rest. Measure 344 continues the melody with a half note F#4, a quarter note G4, and a quarter rest. The bass line has a half note E3, a quarter note F#3, and a quarter rest. Measure 345 features a pizzicato (pizz.) instruction. The melody has a half note A4, a quarter note B4, and a quarter rest. The bass line has a half note G3, a quarter note A3, and a quarter rest. Measure 346 is marked poco ritardando (poco rit.). The melody has a half note C5, a quarter note D5, and a quarter rest. The bass line has a half note B3, a quarter note C4, and a quarter rest.

Musical notation for the bass line of 'The Rose Tree'. The key signature is three sharps (F#, C#, G#) and the time signature is 7/8. The melody consists of eighth notes with rests, following the pattern: G2 (quarter), G2 (quarter), G2 (quarter), F#2 (quarter), E2 (quarter), D2 (quarter), C#2 (quarter).

354 **poco allarg.** arco **16** **A tempo** div. *f* *fff*

359 **allargando** **Meno mosso** pizz. *ppp* *rit.* ♩ = ♩

365

369 **17** **Allegro (alla marcia)** **18** **19** **26** arco *f* *ff*

419 **19** pizz. *p*

428 arco *pp*

436 pizz. arco pizz. arco **2** pizz. *f* *ff* *ff* *ff*

445 **20** **18** **21** arco *ff* **19**

487 **22** **2** *ff* **allarg. e sostenendo** *ff*

493

5