

Soprano

1345 Vocalise for Soprano and Violin

Stephen W. Beatty (1938)

A $\text{♩} = 90$

AA

5 *mf* *f* *mp* *mf* *f*

9 *mf* *f* *mf*

13 *pp* *mf* *mp* *mf*

17 *f* *mf* *f* *mp* *f*

21 *mf* *f* *mf* *p* *mf* *mp* *mf* *f*

25 *mf* *f* *mf* *f* *mp* *mf*

29 *ff* *mf* *f* *mf*

33 *f* *mf* *mp*

Soprano

37 *mf* *f* *mp* *f* *mf*

40

44 *mp* *mf* *mp* *mf*

47 *f* *mp* *mf* *f*

51 *mf* *f* *mf*

55 *ff* *f* *pp* *mf*

58 *f* *mp* *f* *p* *mf*

61 *mp*

65 *mf*

69

This image shows a page of a musical score for a Soprano voice part. The page is numbered '2' in the top left corner. The title 'Soprano' is centered at the top. The score consists of ten staves of music, each beginning with a measure number. The first staff starts at measure 37 and ends at 40. The second staff starts at 40 and ends at 44. The third staff starts at 44 and ends at 47. The fourth staff starts at 47 and ends at 51. The fifth staff starts at 51 and ends at 55. The sixth staff starts at 55 and ends at 58. The seventh staff starts at 58 and ends at 61. The eighth staff starts at 61 and ends at 65. The ninth staff starts at 65 and ends at 69. The tenth staff starts at 69 and ends at 72. The music is written in a single system on a grand staff (treble clef). The key signature has one sharp (F#). The time signature is not explicitly shown but appears to be 4/4. The dynamics are marked with various symbols: *mf* (mezzo-forte), *f* (forte), *mp* (mezzo-piano), *ff* (fortissimo), *pp* (pianissimo), and *p* (piano). The notation includes various note values, rests, and slurs.

73 *mp* *mf* *ff*

77 *f* *mp* *f* *mf*

81 *mp* *mf* *f* *mf*

84 *p*

88 *mf* *mp* *mf* *mp* *mf* *mp* *mf*

91 *mp* *f* *mf* *f* *mp* *mf*

95 *f*

99 *mp* *mf* *f* *mf*

103 *f* *mf* *mp* *p* *f* *mp*

107 *mf* *f* *mf* *f*

111 *mf* *mp*

114 *f*

117 *mp* *mf* *f* *pp* *mf*

121 *f* *mf*

124 *f* *mp* *mf*

127 *f* *mf* *pp* *f*

The musical score for the Soprano part consists of six staves of music, numbered 111 to 127. The key signature is one sharp (F#). The dynamics are marked as follows: *mf* (mezzo-forte) at measures 111 and 117; *mp* (mezzo-piano) at measures 111, 117, and 124; *f* (forte) at measures 114, 117, 121, 124, and 127; and *pp* (pianissimo) at measure 117. The notation includes various rhythmic values, including eighth and sixteenth notes, and rests. The piece ends with a double bar line at measure 127.

Violin

1345 Vocalise for Soprano and Violin

Stephen W. Beatty (1938)

A ♩ = 90

Musical score for "The Rose Tree" in 4/4 time. The score consists of 34 measures, organized into eight systems of four measures each. The key signature has one sharp (F#), and the time signature is 4/4. The melody is written on a single staff with a treble clef. Dynamics include *mp* (mezzo-piano), *mf* (mezzo-forte), *f* (forte), *p* (piano), and *pp* (pianissimo). Articulations include slurs, accents, and staccato marks. The piece concludes with a final double bar line at measure 34.

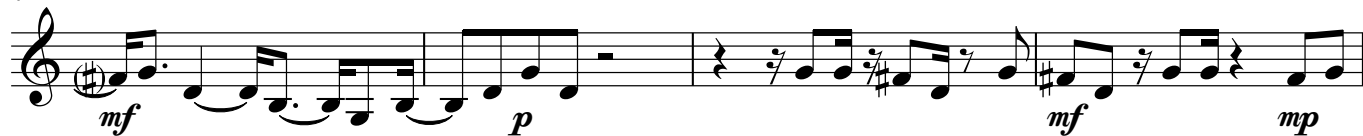
©Stephen W. Beatty 1/2019

V.S.

38



42



46



50



54



59



63



67



71



76



80

mf mp *mf*

86

mp *mf* *p* *mp* *mf* *mp*

90

mf *mp* *mf* *p*

94

mp *mf* *f* *mf* *mp*

98

mf *mp* *mf* *f* *mp*

103

mf *pp* *mf*

107

mp *mf* *pp* *mp*

111

mf *mp* *mf* *mp* *p*

115

mp *mf* *p* *f* *mf* *mp* *mf*

120

f *mp* *mf*

124



127

