

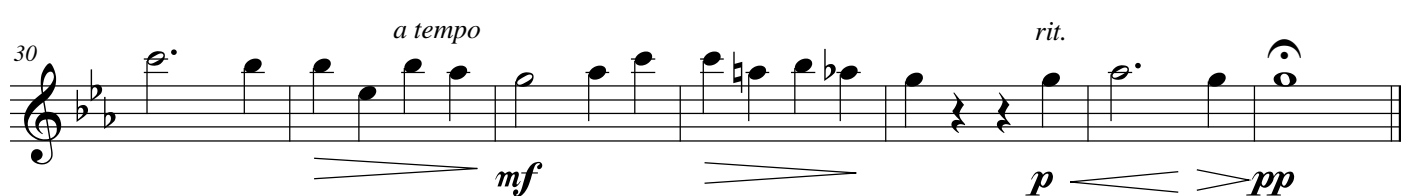
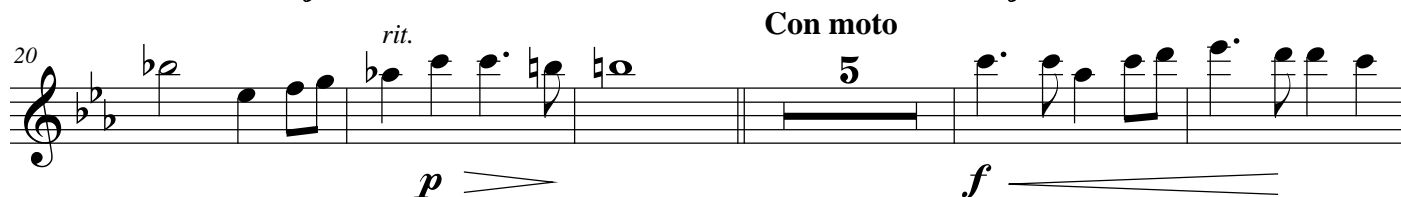
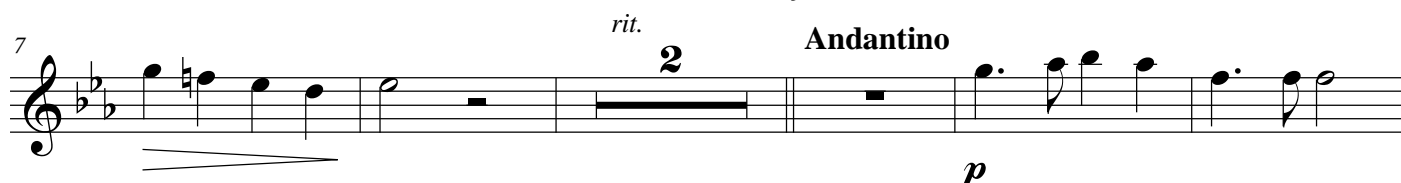
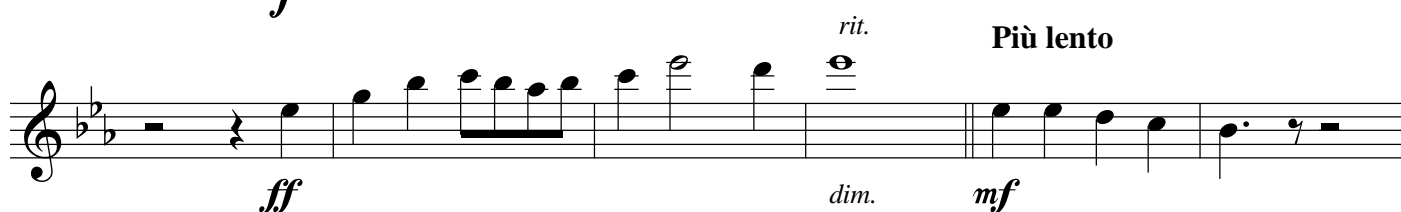
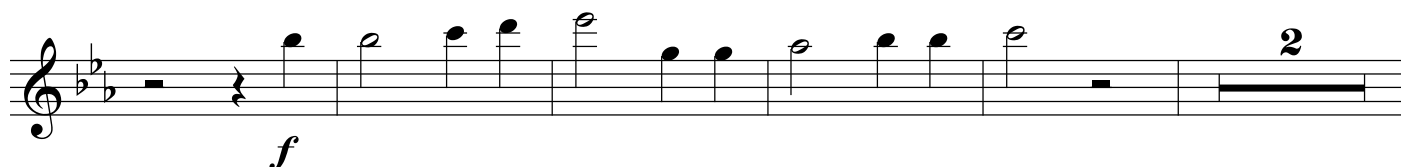
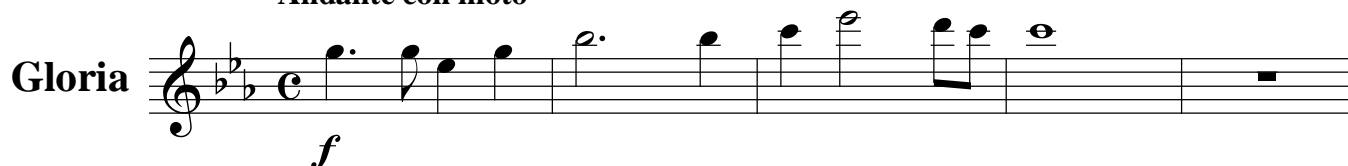
Flute

Missa Solemnis

in honorem

Sancti Michaelis Archangeli

Jorge Braun (- 1957)

Moderato**Andante con moto**

Missa Solemnis in honorem Sancti Michaelis Archangeli

2

Flute

Con moto

2 **3**

f *cresc.* *dim.*

f *cresc.*

rit. *Più lento* **5** *a tempo*

dim. *mf*

cresc. *rit.* **2** **Moderato** **15**

Poco più mosso *mf*

Sostenuto *p*

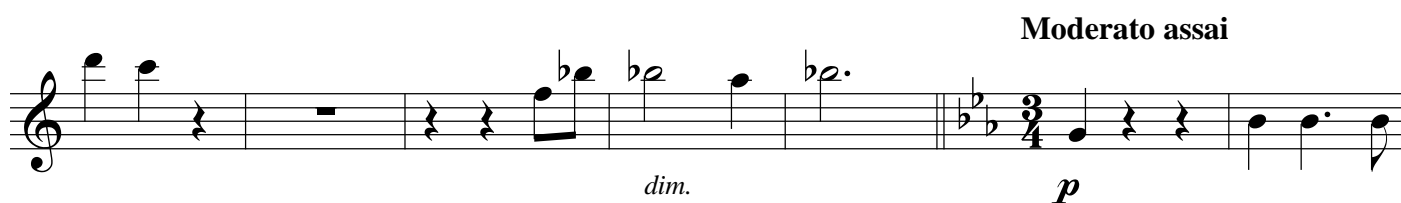
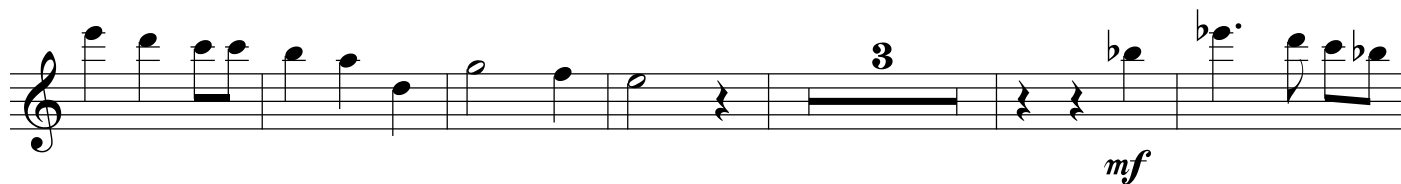
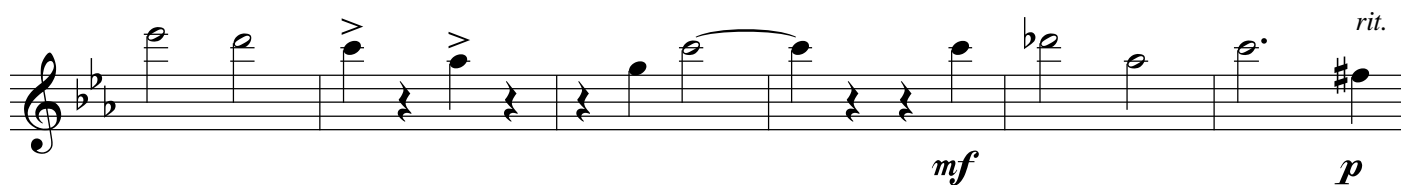
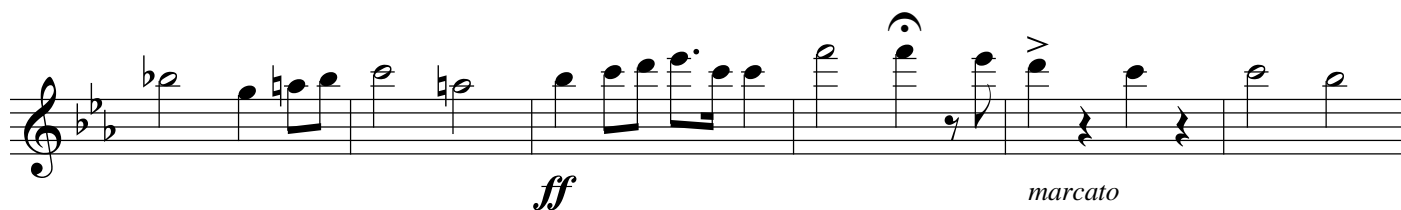
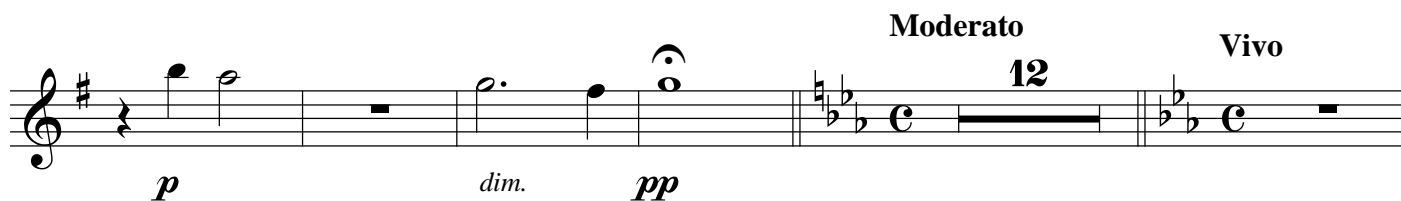
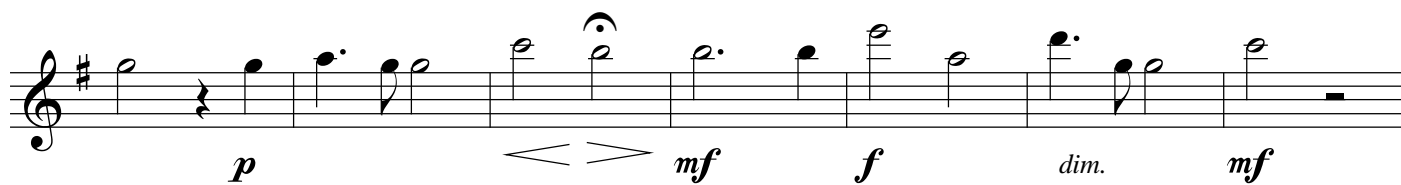
3 *Andante con moto* *mf* *f*

rit. **2** **2** *Andantino* *f* *cresc.*

Missa Solemnis in honorem Sancti Michaelis Archangeli

4

Flute



Measures 1-16 of the Flute part. The key signature is B-flat major (three flats). The time signature is common time (C). The music features various dynamics and articulations:

- Measure 1: *mf*
- Measure 2: *p*
- Measure 3: *lento*
- Measure 4: *a tempo*
- Measure 5: *mf*
- Measure 6: *f*
- Measure 7: *Con moto*
- Measure 8: *mf*
- Measure 9: *f*
- Measure 10: *cresc.*
- Measure 11: *rit.*
- Measure 12: *dim.*
- Measure 13: *mf*
- Measure 14: *f*
- Measure 15: *mf*
- Measure 16: *f*

Measures 17-24 of the Flute part. The key signature is B-flat major (three flats). The time signature is common time (C). The music features various dynamics and articulations:

- Measure 17: *Maestoso*
- Measure 18: *Sanctus*
- Measure 19: *p*
- Measure 20: *pp*
- Measure 21: *mf*
- Measure 22: *f*
- Measure 23: *Con moto, marcato*
- Measure 24: *ff*
- Measure 25: *animato*
- Measure 26: *dim.*
- Measure 27: *mf*

Flute

