

Organ

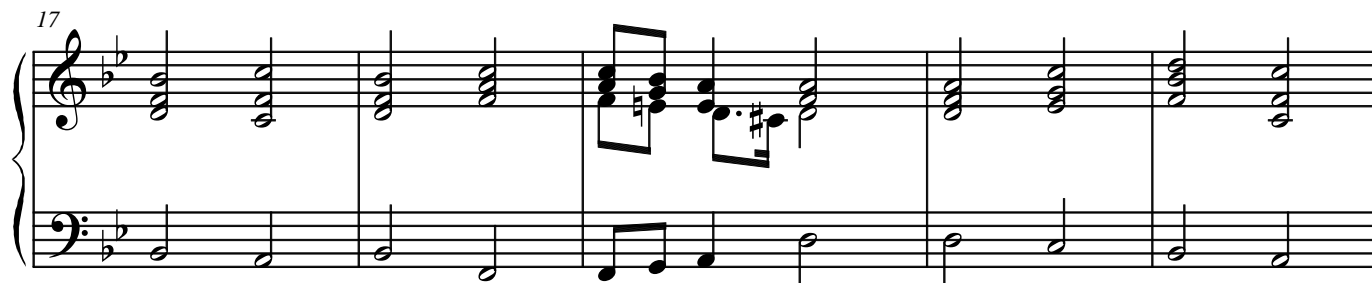
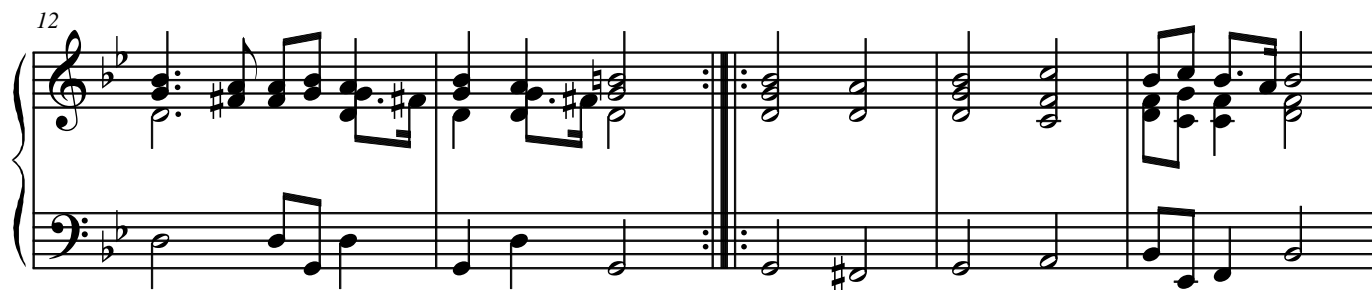
# Sonatina No. 63

for Brass Quartet & Organ

Johann Christoph Pezel (1639-1694)

Arr. Michel Rondeau

Moderato (♩ = circa 95)



## Sonatina No. 63 Organ

22

Measures 22-26 of the organ sonatina. The piece is in 2/4 time and B-flat major. Measure 22 features a rapid sixteenth-note melody in the right hand and a single eighth note in the left. Measures 23-24 show a more active left hand with eighth-note patterns. Measure 25 has a whole note in the left hand. Measure 26 concludes with a half note in the left hand and a final chord in the right.

27

Measures 27-30 of the organ sonatina. Measures 27-28 consist of sustained chords in the right hand. Measure 29 features a descending eighth-note scale in the right hand. Measure 30 is the final measure, ending with a whole note in the left hand and a final chord in the right.