

Sonata in C Minor for Violin/Oboe

Georg Philipp Telemann

C Trumpet

Affettuoso

First system: Treble clef, C minor key signature (three flats), common time (C). The music begins with a whole rest followed by a quarter note G4, then a quarter note A4, and a quarter note Bb4. The first measure is marked with a forte *f* dynamic. The second system (measures 4-6) continues with eighth and sixteenth notes, featuring a trill *tr.* on G5 in measure 5. The third system (measures 7-9) starts with a repeat sign and continues with eighth notes. The fourth system (measures 10-12) features sixteenth-note runs and a trill *tr.* on G5 in measure 11, ending with a piano *p* dynamic. The fifth system (measures 13-15) continues with sixteenth-note runs and a trill *tr.* on G5 in measure 14, ending with a forte *f* dynamic.

Andante (non troppo) e taccato

First system: Treble clef, C minor key signature (three flats), 12/8 time signature. The music begins with a whole rest followed by a quarter note G4, then a quarter note A4, and a quarter note Bb4. The first measure is marked with a forte *f* dynamic. The second system (measures 5-7) continues with eighth notes. The third system (measures 8-10) features sixteenth-note runs and a piano *piano* dynamic. The fourth system (measures 11-13) starts with a repeat sign and continues with eighth notes, marked with a forte *f* dynamic. The fifth system (measures 14-16) continues with eighth notes, marked with a piano *p* dynamic, and ends with a forte *f* dynamic.

Largo

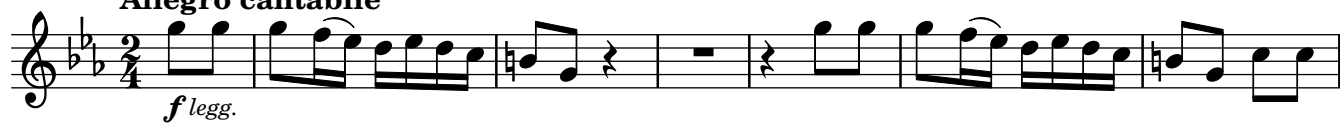
Measures 1-6 of the Largo section. The music is in C major, 4/4 time. Measure 1 starts with a piano (*p*) dynamic. Measures 2-3 contain trills. Measure 4 has a mezzo-forte (*mf*) dynamic. Measure 5 has a piano (*p*) dynamic. Measure 6 ends with a double bar line.

Allegro

Measures 7-13 of the Allegro section. The music is in C major, 4/4 time. Measure 7 starts with a forte (*f*) dynamic. Measures 8-9 contain trills. Measure 10 has a piano (*p*) dynamic. Measure 11 has a forte (*f*) dynamic. Measure 12 has a trill. Measure 13 ends with a double bar line.

Grave

Measures 14-17 of the Grave section. The music is in C major, 4/4 time. Measure 14 starts with a forte (*f*) dynamic. Measures 15-16 contain trills. Measure 17 ends with a double bar line.

Allegro cantabile

Sonata in C Minor for Violin/Oboe

Georg Philipp Telemann

B \flat Trumpet

Affettuoso

First system: Treble clef, C minor key signature (one flat), common time (C). The music begins with a rest followed by a quarter note G \flat , then a half note F, and continues with eighth and sixteenth notes. A forte (*f*) dynamic is marked under the first measure.

Second system: Continues the melodic line with eighth and sixteenth notes, featuring trills (*tr*) on the final notes of the system.

Third system: Continues the melodic line with eighth and sixteenth notes.

Fourth system: Continues the melodic line with eighth and sixteenth notes, featuring a piano (*p*) dynamic marking.

Fifth system: Continues the melodic line with eighth and sixteenth notes, featuring a forte (*f*) dynamic marking and trills (*tr*) on the final notes.

Andante (non troppo) e taccato

First system: Treble clef, C minor key signature (one flat), 12/8 time signature. The music begins with a rest followed by a quarter note G \flat , then a half note F, and continues with eighth and sixteenth notes. A forte (*f*) dynamic is marked under the final measure.

Second system: Continues the melodic line with eighth and sixteenth notes.

Third system: Continues the melodic line with eighth and sixteenth notes, featuring a piano (*piano*) dynamic marking.

Fourth system: Continues the melodic line with eighth and sixteenth notes, featuring a forte (*f*) dynamic marking.

Fifth system: Continues the melodic line with eighth and sixteenth notes, featuring a piano (*p*) dynamic marking and a forte (*f*) dynamic marking.

Largo

Measures 1-6 of the Largo section. The music is in B-flat major, 4/4 time. Measure 1 starts with a piano (*p*) dynamic. Measures 4 and 6 contain trills (*tr*). Measure 5 has a mezzo-forte (*mf*) dynamic. The section ends with a double bar line at measure 6.

Allegro

Measures 7-13 of the Allegro section. The music is in B-flat major, 4/4 time. Measure 7 starts with a forte (*f*) dynamic. Measures 8, 9, 11, and 12 contain trills (*tr*). Measure 13 has a piano (*p*) dynamic. The section ends with a double bar line at measure 13.

Grave

Measures 14-17 of the Grave section. The music is in B-flat major, 4/4 time. Measure 14 starts with a forte (*f*) dynamic. The section ends with a double bar line at measure 17.

Allegro cantabile