

# Duet for 2 Tenor Trombones in F major, Op.2501

Tenor Trombone

Stephen W. Beatty (1938)

♩ = 100

1 *f* *mf* *f*

5 *mf* *f*

10 *mf* *f*

14 *mf* *f*

18 *mf*

22 *f*

26 *mf* *f*

30 *mf*

34 *f*

38   
43   
48   
53   
57   
61   
66   
70   
74   
78 

Tenor Trombone

3

82

3 *f*<sup>3</sup>

86

*mf*

91

*f* *mf*

95

*f*

99

*mp* 3

103

*f* *mp* *f*

107

3 *mf*

111

*f* 3 *mf* *f*<sup>3</sup>

115

*mf* *f* *mf* 3

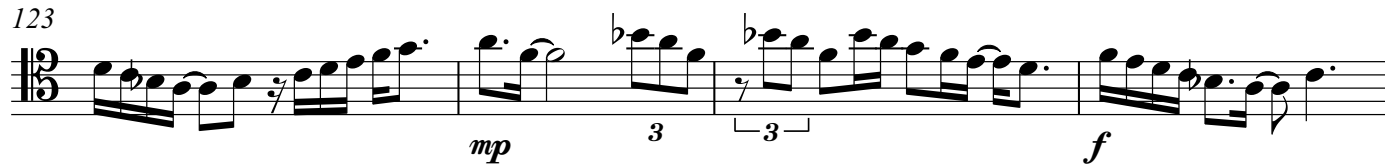
119

*f* *mf* 3

V.S.

## Tenor Trombone

123



127



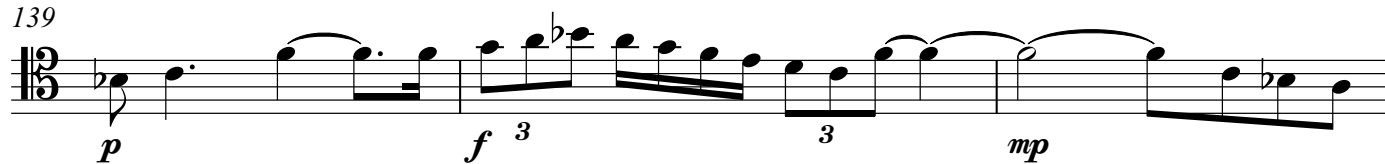
131



135



139



142

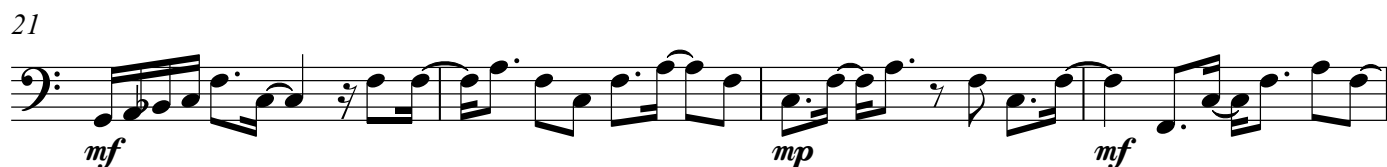


# Duet for 2 Tenor Trombones in F major, Op.2501

Tenor Trombone 2

Stephen W. Beatty (1938)

♩ = 100



37



41



45



49



54



59



64



68



72



76



81



85



89



93



97



102



106



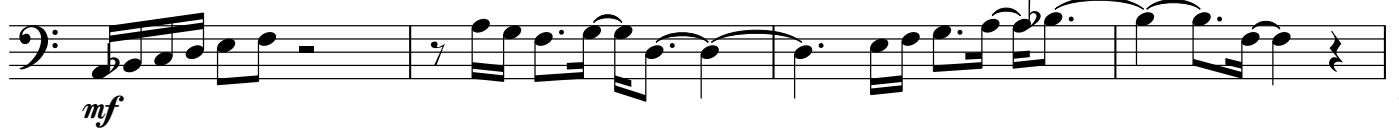
110



114



118



122



126



130



134



138



142

